

THE STORE THAT CLOSSES
SATURDAYS AT SIX

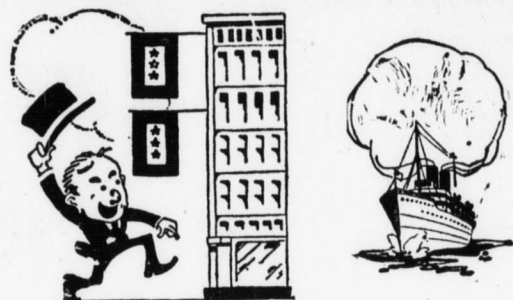
Bowman's

THE STORE THAT CLOSSES
SATURDAYS AT SIX

BELL 1961-2356 UNITED

HARRISBURG, WEDNESDAY, APRIL 30, 1919.

FOUNDED 1871



On Home Shores

"Thank you, very much; I wanted to see about my husband arriving in Philadelphia from 'Over There.'" This from a comely little wife who had borrowed the daily paper to scan the news about her husband arriving with the "Iron Division" at the home shores. No news since the signing of the Armistice is of greater interest to the wives, mothers, sisters and sweethearts than the home-coming of their soldier boys. Sparkling eyes, happy smiles and silent tears of joy tell a story too great for mere words. Even the men folks feel like tossing their hats in the air and giving a rousing hooray.

Just at this time, however, before the boys reach Harrisburg, why not let them read in the daily papers how Harrisburg is showing its appreciation of their heroic work—and of those whose supreme sacrifice is reflected in the Gold Stars—by making their home city go over the top with the Victory Liberty Loan?

Domestics

Dress Gingham in plaid, stripes and plain colors. All new patterns, 35c yd.
Percales of best quality in blue, gray and light patterns. All 36 inches wide in stripes and figures, 29c yd.
Madras for waists or shirts. A soft finished material in good styles. 32 inches wide, 35c yd.

BOWMAN'S—Second Floor.

Women's Smart Suits



At Most Attractive Prices in our Clearance Sale of Suits

\$23.60, \$31.60, \$39.60 and \$47.60

A splendid collection consisting of Box, Sports and Dressy, semi-tailored and tailored suits—tailoring of the very best materials are gabardine, poret twill, tricotine pencil stripe, velour check and men's wear serge. Some with vests of embroidered tricolette or fancy silk; handsomely lined with plain color or novelty silks. Sizes 16 to 51.

BOWMAN'S—Third Floor.

Children's Stamped Dresses

In all sizes from infants' to 12 years, made up in lawn, rep, pique, batiste and gingham. 39c to \$3.50.
Lace trimmed scarfs to be embroidered in French knots; 18x36 and 18x45. Stamped in two patterns. \$1.39 to \$1.79.

BOWMAN'S—Second Floor.

We ask you to compare MODART CORSETS Front Laced with any other corsets



We ask you to compare for—

Quality

We ask you to compare for—

Lines

We ask you to compare for—

Workmanship

And when you have given it a thorough, impartial test by wearing it—we will leave it to your judgment whether or not there is any other front laced corset in the Modart class.

We chose to specialize on the Modart Front Laced Corset—to feature it in our advertising, to recommend it to our customers—only after a thorough study and search of the corset field. And only after we were convinced that no other front laced corsets compared with the Modart in quality and finishing features, did we choose them.

Our expert, scientific corset fitting service always at your free disposal.

BOWMAN'S—Second Floor.

A Special Sale of 8161½ Yards Of Laces Tomorrow And Friday Choice 12½c and 15c Yard

Mostly Imported

And such an assortment of elegance in beautiful laces in various widths at these astonishingly low prices is an event so unusual in any store that we ought to have a clearance of the 8161½ yards before the two days are up.

Venise edgings, shadow laces and insertions, all-over laces, torchion laces, cluny laces, filet laces, chantilly laces—in fact laces for almost every conceivable purpose. Widths from the narrow venise edges, up to 18 inches.

The shipment represents an entire lot of full piece lengths, but only one or two patterns of a kind. He wanted to clean out the whole stock and offered a price that we could not resist. In fact, the prices we offer them to you are so low that it seems unbelievable. When you see the scores of pretty and effective designs in this lot of laces you will understand this.



BOWMAN'S—Main Floor.

140 Yards Oriental Lace Dress Flouncings \$1.39 to \$1.95 Yard

27 inches to 54 inches wide. Extra fine quality net. Excellent for beautiful evening gowns.

BOWMAN'S—Main Floor.

240 Madeira Handkerchiefs

at 75c each



A very fortunate buy of Madeira Handkerchiefs enable us to sell these at half the price they usually sell for. These handkerchiefs have traveled from the Azore Islands to us and are of the finest linen. All hand-embroidered with fine fancy scalloped edges, embroidered corners of different designs. Regular size.

Indeed, we consider ourselves very fortunate in obtaining these as there is a scarcity of Madeira handkerchiefs.

BOWMAN'S—Main Floor.

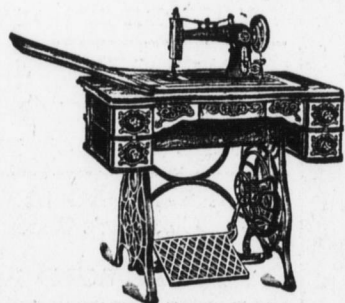
SPECIAL SALE

Dents' White Cape Gloves \$1.15 Pair

A white glove, excellent in make and quality. White, self and white with black. The price is so far below what you would have to pay if it had not been for this special purchase, that you cannot afford to ignore this unusual opportunity.

BOWMAN'S—Main Floor.

Sewing Machines



These machines carry our guarantee for ten years and can be bought on our easy club plan.

Bowman Special; a very good easy running family Sewing Machine, drop head; highly polished oak stand with all attachments; \$30.75.

Vindex B, a good machine for heavier work, noiseless, easy running, beautiful oak stand, drop head, all attachments; \$37.50.

Stop Winding Bobbins

Our two spool machine does away with winding bobbins. Put two spools of thread on and go ahead and sew until the thread is used up. Noiseless, very easy running, drop head, very handsome oak case with all attachments; \$55.00.

BOWMAN'S—Fourth Floor.

Our Wash Goods Section

is replete with most exquisite fabrics for late Spring and Summer frock materials. They embrace all the newest and latest fabrics, both made in America and abroad. Such as:

- 42-inch Embroidered French Voile; \$1.25 yd.
- 40-inch Roubaix Voiles; \$1.25 and \$1.39 yd.
- 40-inch Swiss Embroidered Lawn; \$1.85 yd.
- 40-inch English Tissue; \$1.00 yd.
- 36-inch Gingham Tissue; 85c yd.
- 40-inch Trousonian Cloth; 75c yd.
- 40-inch Plain Habutine; 79c yd.
- 36-inch Handkerchief Linen; \$1.50 yd.
- 40-inch Fancy Voiles, 300 styles; 59c yd.
- 32-inch Domestic Gingham, finest quality; 50c, 75c and 85c yd.
- 32-inch D. and J. Anderson Gingham; 85c yd.
- 36-inch Figured Foulards; beautiful quality; \$1.25 yd.
- 36-inch Figured Georgette; \$1.25 yd.

BOWMAN'S—Main Floor.

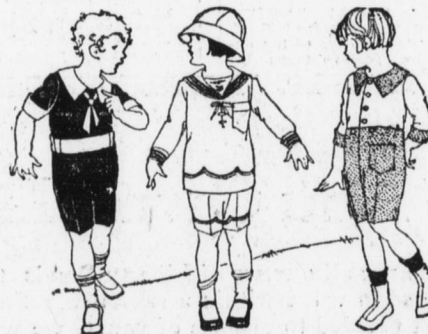
Children's Union Suits and Stockings

Nainsook waist suit and ideal garments for children, giving both comfort and good wear. All sizes to 12 years; 59c

Children's stockings are a feature in our hosiery department. Showing today a fine ribbed stocking, strongly made for good service in black, white and brown; 55c and 65c

BOWMAN'S—Main Floor.

Boys' Washable Suits



Every suit fresh and of the new Spring and Summer styles. And every style delightfully boyish and attractive.

Boys' white washable suits in poplin, rep, linen and pique; in middy, Russian, Norfolk styles. All white and trimmed in colors; 2 to 8 years. \$2.25, \$2.95, \$3.50 to \$6.50.

Boys' colored wash suits; plain chambray, striped Galatea, dark blue and gray Palmer, linen and rep; 2 to 8 years. \$2.25, \$2.50, \$2.95, \$3.50 to \$6.50.

Boys' Oliver Twist suits, white and colored. Pants buttoned on waist trimmed with touches of hand embroidery. Sizes 2 to 6 years. \$1.95, \$2.50, \$2.95 to \$5.50.

Boys' suits; blouse of white Galatea with sailor collar of blue serge and black tie. Trousers of blue serge buttoned on to blouse. Emblem on sleeve of blouse. \$5.50, \$5.95 and \$6.50.

BOWMAN'S—Second Floor.

Women's Fine Turn Footwear

Pumps and Oxfords

- Black Kid Opera Pumps; \$6.90 and \$9.00.
- Brown Calf Opera Pumps; \$7.95
- Black Satin Opera Pumps; \$8.50
- Patent Leather Opera Pumps; \$9.50
- Black Kid Oxfords; \$8.95
- Brown Calf Oxfords; \$8.95
- Patent Leather Oxfords; \$10.00
- Black Suede, \$11.50
- Patent Leather Colonial Pump; \$10.00



All with turned soles and Louis XV. heels.

BOWMAN'S—Main Floor.

Vassar Lisle Elastic

A good snappy elastic in all widths. It's made of long fiber, high luster lisle and live rubber with a "Kick" that outlasts any other elastic.

Used for blouses, bloomers, rompers, etc. You should insist on Vassar Elastic. Ask for it in our store. Buy it by yard or bolt. The price varies with the widths.

The Kinlet Waterproof Aprons

A rubberized material in assorted colors, suitable for kitchen or laundry use; 89c

BOWMAN'S—Main Floor.

Keep Up Your Garden

And Your Garden Will Keep You

The thoughts of the wise now turn to the garden for recreation or profit. Many a man furnishes his table by cultivating a garden plot at odd moments. Others spend many a delightful hour there among the flower beds.

Whether it be a flower bed or vegetable garden, we are prepared to furnish your wants.

LAWN MOWERS— with 8-inch driving wheel, 3 knives of hardened steel; \$6.75 to \$7.75.

BALL BEARING MOWER—with 9-inch driving wheel with 4 knives. Ball bearing cones are made of best quality tool steel; \$10.00 to \$11.50.

BALL BEARING MOWER with 10½-inch driving wheel, 4 blades of best tempered steel; \$12.50 to \$13.50.

GRASS CATCHERS made of canvas. Can be adjusted to mowers up to 16 inches; 98c and \$1.25.

Every Day Garden Necessities

- Wheelbarrows; \$4.50.
- 14-tooth steel rakes; \$1.00.
- 6-tooth rakes; 30c.
- Spades with D handles; \$1.25
- Shovels pointed with long handles; \$1.65.
- Trowels; 10c.

- Hand weeders; 25c.
- Hedge shears; \$1.25 to \$2.00.
- Grass shears; 25c and 50c.
- Weeder; 5c.
- Cultivators with long handles; \$1.25.



Adjusto

Plant

Supports

Adjusted in a jiffy to any height to conform to the plant's growth. Indispensable for tomatoes, roses, hydrangeas and dahlias. In fact, all plants that need a support.

18-inch, 85c dozen; 24-inch, \$1.00 dozen; 3-ft., \$1.75 dozen; 4-ft., \$2.00 dozen; 5-ft., \$2.25 dozen.

Lawn Rollers

Start now to get your lawn in shape by using a good Lawn Roller to firm the soil and make it hold moisture. We sell the water weight roller which can be adjusted in weight by putting water inside.

Water weight rollers, 60-lb. empty, 160-lb. filled; \$13.50.

Water weight rollers, 110-lb. empty, 500-lb. filled; \$21.00.

Garden Seeds

The kind that grow; the kind we have bought and sold for a good many years, and always bring good reports.

Flower seeds, pkg., 10c. Corn, Beans and Peas

Vegetable seeds, 2 for 15c. box, 20c.

Grass seeds, box, 20c.

Window Screens and Doors

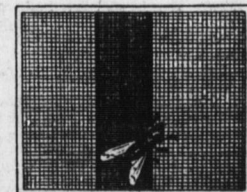
Complete variety of styles and all sizes obtainable in ready made Screens and Doors.

Doors according to style and thickness, \$1.89 to \$5.25.

Adjustable screens, 45c to \$1.20.

All Metal screens, 75c to \$1.45.

Bring exact measurements as we do not exchange screens or screen doors.



BOWMAN'S—Basement