

THE STORE THAT CLOSES SATURDAYS AT SIX

# Bowman's

THE STORE THAT CLOSES SATURDAYS AT SIX

BELL 1901-2336 UNITED

HARRISBURG, MONDAY, APRIL 14, 1919.

FOUNDED 1871

### Youth and Simplicity

#### Stitched Into

#### Frocks

#### For Confirmation

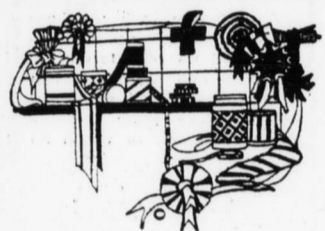
Girls' White Georgette Frocks. If graduation or confirmation is the event of the near future, we have a plain or frilly frock that should prove a realization of the "dream frock" that every girl cherishes for the occasion.



Pretty Confirmation frocks here in Georgette, voile and organdy. With pleatings, lace or ruffled effects—\$17.50, \$19.50, \$22.50, \$29.50, \$35.00.

BOWMAN'S—Third Floor

### Ribbons For Bows and Bags



Easter Hair Bows in novelty stripes and plaids, combining all the newest colorings. 5 to 7 inches wide. 39c to 75c yard. Dark fancies for bags and vestees. Black satin embroidered in gold, silver, roses, Copen and Oriental designs from 7 to 9 inches wide. \$2.50 to \$5.00 yard.

A big showing of bag frames in celluloid and metal. Also colored frames to match ribbon. 59c to \$3.50 each.

BOWMAN'S—Main Floor.

### Women's Union Suits

Athena Union Suits for the Spring and Summer seasons are now on display in our women's underwear department. This perfect fitting underwear is the practical garment for ease and comfort.

Sold exclusively at Bowman's. Moderately priced, \$1.75 and \$2.00.

BOWMAN'S—Main Floor.

### Vests and Vestees



Never have vests been more popular than this season, and we have a very big showing of vests in plain and fancy materials, collars and collarless. Materials are Dewkist, Matelasse, Tricolette, Pique, Brocades, Pongee and other fancy materials. Prices range from

50c to \$12.50

BOWMAN'S—Main Floor.

### Sweaters For Cool Mornings and Outdoor Sport Wear

Judging by the many dainty models in cleverly knitted sweaters which we are showing for spring wear there is every indication that smart sweaters will be worn extensively all spring and summer.

To appreciate the many novelties included in this showing of the spring style sweaters you must see for yourself the score or more of new models we now have on display.

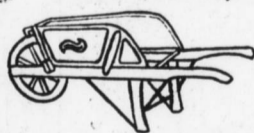
Tuxedo models in soft Shetland wool in bisque, rose, flesh and blue. \$7.95 and \$11.95.

Other sweaters in slipon and coat styles, \$3.95 to \$10.95. Silk sweaters from \$12.95 to \$39.50.

BOWMAN'S—Third Floor

### Garden Goods

#### Are Here Of Every Description



Wheelbarrows, Rakes, Hoes, Spades, Flower Seeds, Vegetable Seeds, Flower Bulbs, Hedge Shears, Pruning Shears, Grass Shears, Onion Hoes and Poultry Netting.

BOWMAN'S—Basement.

### Window Screens and Doors



Our doors and screens are the best that can be had in a ready-made article. They are well constructed and built to last. The doors are of different designs and construction. The prices start with one 7/8-inch thick and frames 3-inches wide covered with black netting, to one 1 1/2-in. thick with 4-inch frames, covered with galvanized wire netting, at \$5.25.

The screens are adjustable and easy sliding. The wire netting is securely fastened to the frame and is covered with moulding. The wire is close mesh and makes the entrance of the fly impossible. Prices range from one 15 inches high extending from 21 to 33 inches in width at 45c; to our 36-inch high extending from 29 to 45 inches width at \$1.20.

BOWMAN'S—Basement.

## Women's Tailored and Dressy Suits

### For Easter In The New Materials and All Of The Smartest Styles

An art exhibit of old masters could not hold more interest for the modern woman just now, than does this notable collection of suits for Easter, expressing in line and fabric, the new mode, displaying every style innovation, every nicety of tailoring. Youthful models and models for the more mature woman—a suit for every occasion, when a tailored costume is appropriate. In this collection are many Hickson and Michel models.

#### The New Fabrics

Wool Tricotine, Poret twill, gabardine, serge, tweeds, wool jersey and black and white or novelty checks; also faille silk, satin, charmeuse and knitted silk fabrics, in all the new shades, including navy and black.

#### The New Style Features

Straight line models, belted or sash tied, manish styles, cape, suits, blouse and three-piece costume suits, displaying new cuff treatment, new trimmings; tunic side-draped or slashed skirts.

## \$35.00 \$49.50 \$65.00 to \$135.00

Popular priced models as low as \$23.50. We fit stylish stouts as well as the more slender figures.

BOWMAN'S—Third Floor



## Stylish Stout Suits, Coats and Dolmans

### In Many Pretty Models



A great deal of the popularity of our coat and suit department may be attributed to the careful selection of suits and coats for women whose figures are stouter than the average woman's. We have given this matter special study and always endeavor to have a splendid variety of these stylish stout suits in stock. They embody the newest style ideas developed in the newest materials. Sizes range from 42 to 59 1/2 and include most all the variations of sizes in half numbers, thus assuring the best fit with the least possible alterations.

Suits, Coats, Capes or Dolmans

BOWMAN'S—Third Floor



### Ivory as an Easter Gift

A large assortment of powder boxes, hair receivers, combs, brushes, mirrors, clocks, frames, soap boxes, etc., 25c to \$7.00.

BOWMAN'S—Main Floor.

### Beads

add the finishing touches to your Easter costume. A fine and varied assortment of beads, in every new style and shade, 75c to \$15.00.

BOWMAN'S—Main Floor.

## NEW SPRING FABRICS

### Silks at High-Water Mark of Popularity

Beautiful Silks — The much heard remark this season and in greater demand than any other time for the past 5 years. Our stocks show a completeness and choice range of the newest weaves and colorings.

- Satin Striped Kumsi-Kumsa, \$7.50 yard.
- Plain Colored Dew Kist, \$4.95 yard.
- Mandarin Broche Crepe, \$5.00 yard.
- Printed and Plain Ruff-a-Nuff, \$3.95 yard.
- Armure, Sobel, \$4.95 yard.
- Pussy Willow, plain or fancy, \$3.75 and \$4.50 yard.
- Multi-color Vesting Silks, \$3.00 yard.

### Wool Dress Goods

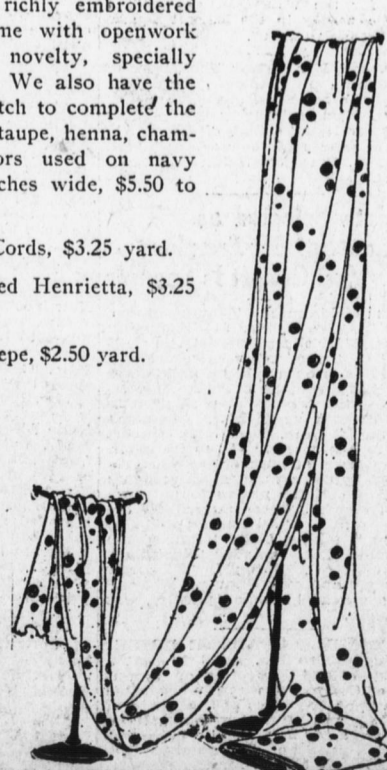
Among the latest arrivals — navy, serges and Santoys, richly embroidered with silk figures, some with openwork effects. A suitable novelty, specially designed for skirts. We also have the plain material to match to complete the suit — Black, navy, taupe, henna, champagne are the colors used on navy ground, 42 to 50 inches wide, \$5.50 to \$6.95 yard.

- 42-inch Ottoman Cords, \$3.25 yard.
- 40-inch Satin Faced Henrietta, \$3.25 yard.
- 40-inch Premier Crepe, \$2.50 yard.

### Cotton Goods

in the finest weaves and qualities, sometimes mixed with silk; of most unusual beauty in colors and designs.

- 36-inch fancy printed georgette, dainty and medium figures, \$1.25 yard.
- 34-inch Gros de Londre silk, mixed, \$1.00 yard.
- 32-inch fancy fiber silk shirtings, \$1.00 yard.
- 40-inch silk mixed fancy voiles, \$1.25 and \$1.39 yard.
- 32 and 36-inch silk mixed tissue, 85c yard.



### Women's Hosiery

Easter shopping days are drawing to a close; only a few days to supply ones wants for the great day of fashion's display.

The hosiery department in this store has bountiful assortments of fine full fashioned silk stockings in the newer season's shades. Black, navy and cordovan predominate, \$1.75 and more.

BOWMAN'S—Main Floor.

### Gloves are Necessary To the New Easter Apparel

There's a wonderful assemblage of gloves here eager to impart to you the style you desire.

The stock of Kid and Silk Gloves is generally so complete in sizes and colors that our department has earned for itself the distinction of being the most likely place to find the particular glove that is wanted most.

White, black, gray, navy, tan, brown, champagne, mode and pearl in self and contrast stitchings; crochet and Paris point backs, one-clasp, two-clasp, gauntlet and 8-button. Every size in every color, \$2.50 to \$4.95.

Silk gloves of every description, 65c to \$2.00.

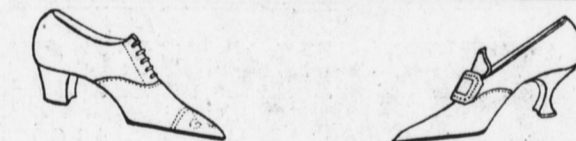
BOWMAN'S—Main Floor.

### Easter Selections of the Vocalion Records

- No. 22019—"The Palms"—(Colin O'Mou.)
- "Hosanna"—(Colin O'Mou.)
- No. 22020—"There is a Green Hill Far Away."
- "Agnus Dei"—(Maximilian Pilzer.)
- No. 12091—"Jesus Christ Is Risen Today."
- "Safe in the Arms of Jesus"—(Henry Burr.)
- No. 12095—"Every Day's a Holiday in Dixie."
- "When the Robert E. Lee"—(Collins and Harlan.)
- No. 1209—"Thoughts of Home Sweet Home"—Waltz.
- "I'll Say She Does"—Fox Trot — (Yerke's Jazarimba Band.)
- No. 12086—"Singapore"—(Arthur Fields.)
- "Oh! Helen!"—(Arthur Fields.)

AEOLIAN PARLORS  
BOWMAN'S—Fifth Floor.

### Yes, They Tell Us We Have The Most Complete Assortment of Women's Shoes For Spring



We do not say this boasting, but we are confident that no store in this vicinity can show a more complete assortment of "new" shoes for Spring and Summer. We made up our mind to get them and we have them. What more could you ask.

What can be more significant of greater value than the hundreds who depend upon us for their footwear. Women and children who have never bought shoes here before are attracted to us by our extraordinary assortments and value standards. You can buy shoes here moderately priced and depend upon their quality at all times.

Women's Turn Opera Pumps — Black kidskin, \$6.95; black satin, \$8.50; patent leather, \$9.50; all with turned soles and Louis XV heels.

Women's Turned Oxfords — Black kidskin, \$8.95; brown calfskin, \$8.95; black satin, \$9.50; patent leather, \$10.00; black suede, \$11.50. All with turned soles and Louis XV heels.

#### Our Children's Department

is complete with a full line of Pumps, Oxfords and Shoes, from Massachusetts' best Children's Shoe Manufacturers.

All children's shoes priced according to size, from \$2.00 to \$6.25. In all leathers.



BOWMAN'S—Main Floor.