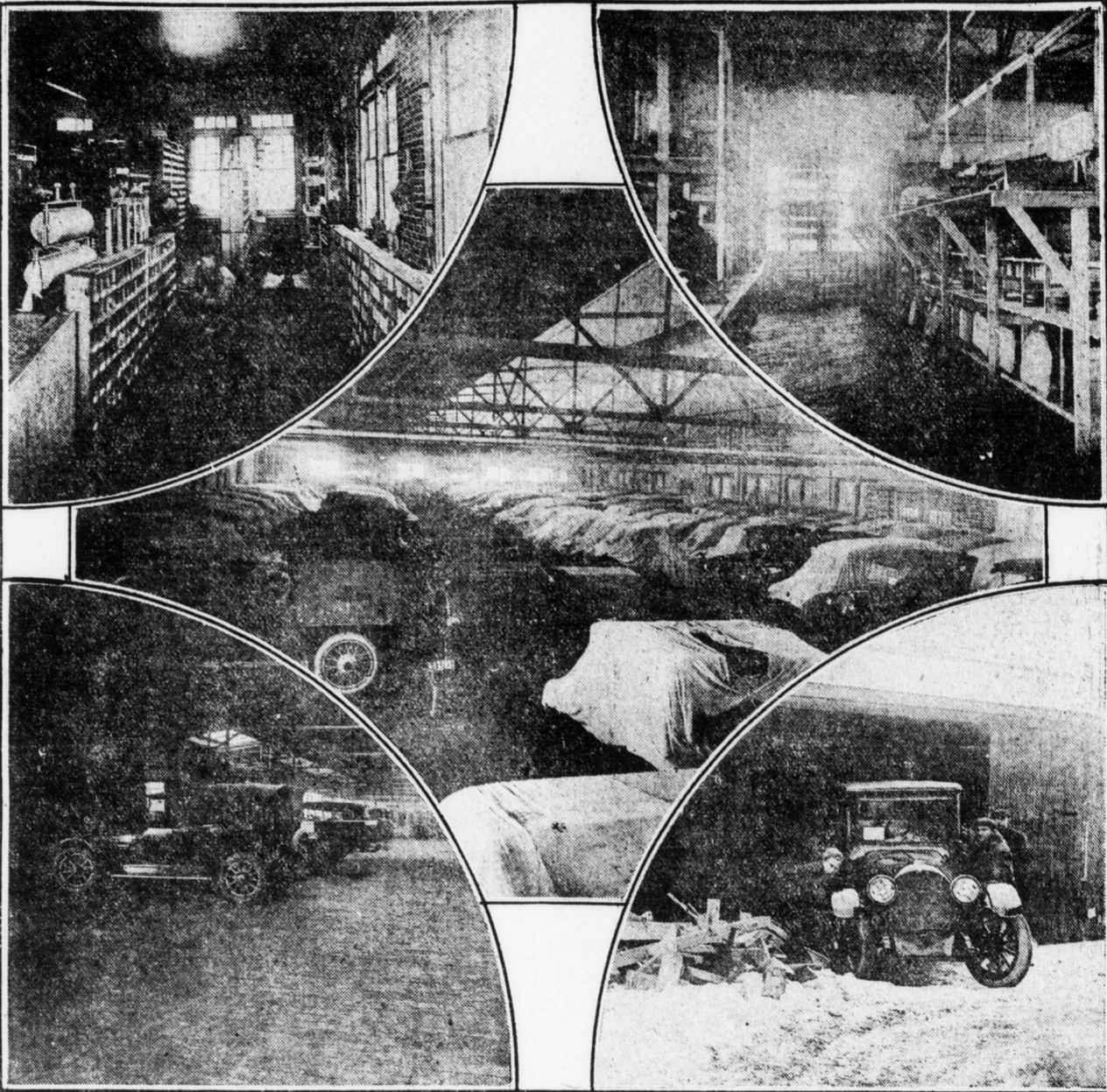
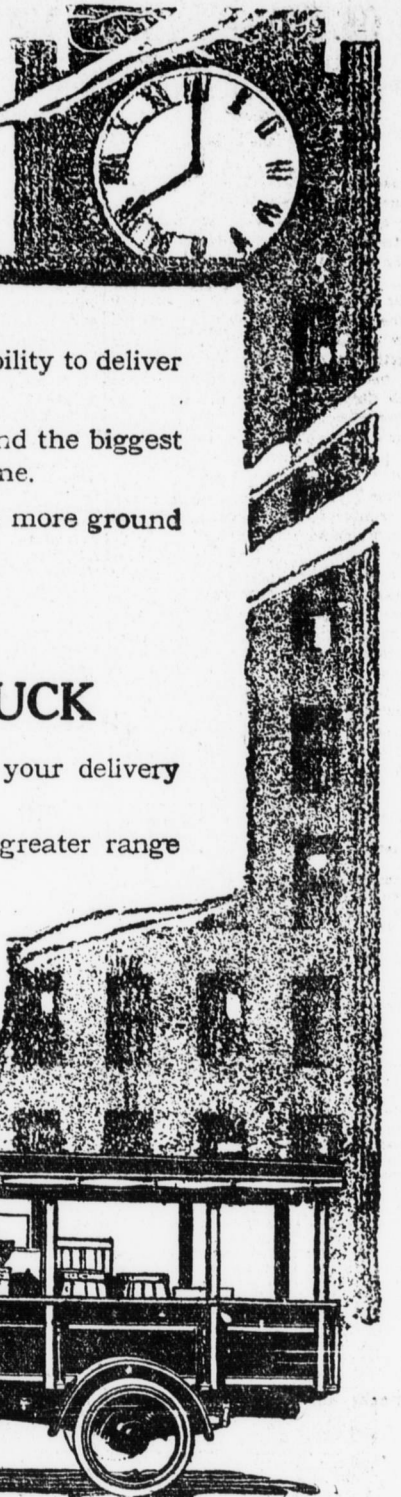


Typical Scenes of the Big Overland-Harrisburg Company's Warerooms at 26th And Derry Sts. Where the Truck Show Will be Held



When the big warerooms and service station of the Overland-Harrisburg Company are not being used as a show room for the Harrisburg Motor Dealers Association as it has been for the past week and will continue to be for three days next week, it presents one of the most up-to-date and busiest automobile centers in Central Pennsylvania. It is here that all repair work on Overland and Willys-Knight touring cars and Bethlem and Hartford trucks, is done. Here also every conceivable part for any of these cars is carried in what is the most complete stock room in this section of the country. A glimpse at the above illustration shows in the upper corners, two sections of this enormous stock room. You will notice radiators in the bins for larger parts and the row upon row of small bins for the smaller parts. In the center of the picture, the big wareroom where the auto show is now being held, shows somewhat the number of cars that are carried in stock for immediate delivery. This room holds more than two hundred cars. It measures 100 by 300 feet. In the lower corners a scene of unloading Overlands is depicted. The cars are unloaded right at the door from the P. & R. siding that runs into the big plant. In the opposite corner is a section of the big repair shop. The Overland-Harrisburg Company was formed in 1915 with salesrooms at 212 N. Second street. A service station was maintained for a while in the rear of the salesrooms but the business increased to such large proportions—it is now the largest in this section—that larger quarters were necessary. The large building at 19th Street and the Reading Railroad was obtained but it too proved inadequate so that finally the building now being used was secured.

More Work In A Day



Your business will not be any bigger than your ability to deliver the article you sell.

Business is built on service—prompt service. And the biggest item of service is the delivery of merchandise on time.

You can't stretch the hours, but you can cover more ground in those hours with a



ONE-TON Worm-Drive TRUCK

With a Chevrolet you'll get more service out of your delivery system—you'll get more work out of a day.

The use of a Chevrolet Truck will allow you a greater range in which to do business.

You can reach out to new territory for sales and deliver this additional business promptly.

You can handle your deliveries efficiently and economically with the Chevrolet. It's a hard-working, long-wearing, mechanically-perfect truck that's extremely easy on fuel.

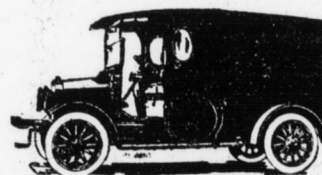
Come in and talk over your delivery problem with us and let us show you how to solve it with a Chevrolet.

Prices Delivered in Harrisburg

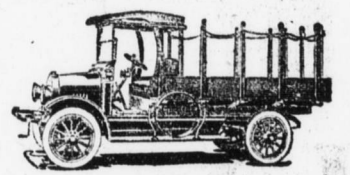
Chassis	\$1425.00
With Body	1560.00
With Body and Top	1645.00

Driscoll Auto Co.
147-155 S. Cameron St.

VIM TRUCK



The Most Serviceable--
The Most Economical--
The Most Dependable



LIGHT DELIVERY TRUCK AT THE TRUCK SHOW

And that isn't what WE say about it but what the more than TWO HUNDRED SATISFIED OWNERS IN THIS TERRITORY HAVE TO SAY ABOUT THEIR VIM TRUCK.

Vim trucks are the product of a TRUCK factory, not a converted passenger car. They are built along truck lines for truck duty. They are equipped with pneumatic tires, electric lights, and the style of body—there are fourteen different types—you can choose that which will best be suited for your particular business.

It isn't necessary for us to tell you what a VIM looks like—you see them a thousand times a day. But, if you are a merchant or business man who has experimented with a converted passenger car or a truck that is too heavy for your business, or if you still cling to the old-fashioned horse and wagon and find your expenses eating up your profit, let us tell YOU that the VIM truck will increase your business, decrease your expenses and eliminate all the worry of your delivery problem. And this all through its economic cost of upkeep and operating.

One user of VIM Trucks in Harrisburg, who uses two in running to surrounding territory every day, six days in the week, reports that he gets on an average of twenty miles to the gallon of gasoline and that in the whole the operating expense for the TWO TRUCKS doesn't run over twenty-two dollars a month. That is what we call cheap delivery.

We can't go into detail about all the salient features of the VIM in this advertisement. All we ask is that you look the VIM over at the Truck and Tractor Show, or, if you are unable to get there, call us up and ask us to send a VIM to your place of business for your inspection. We know that your eyes will be opened after a demonstration.

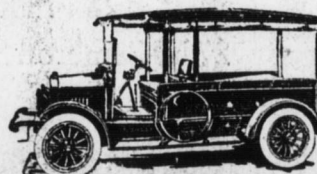
Bell
2133

Andrew Redmond

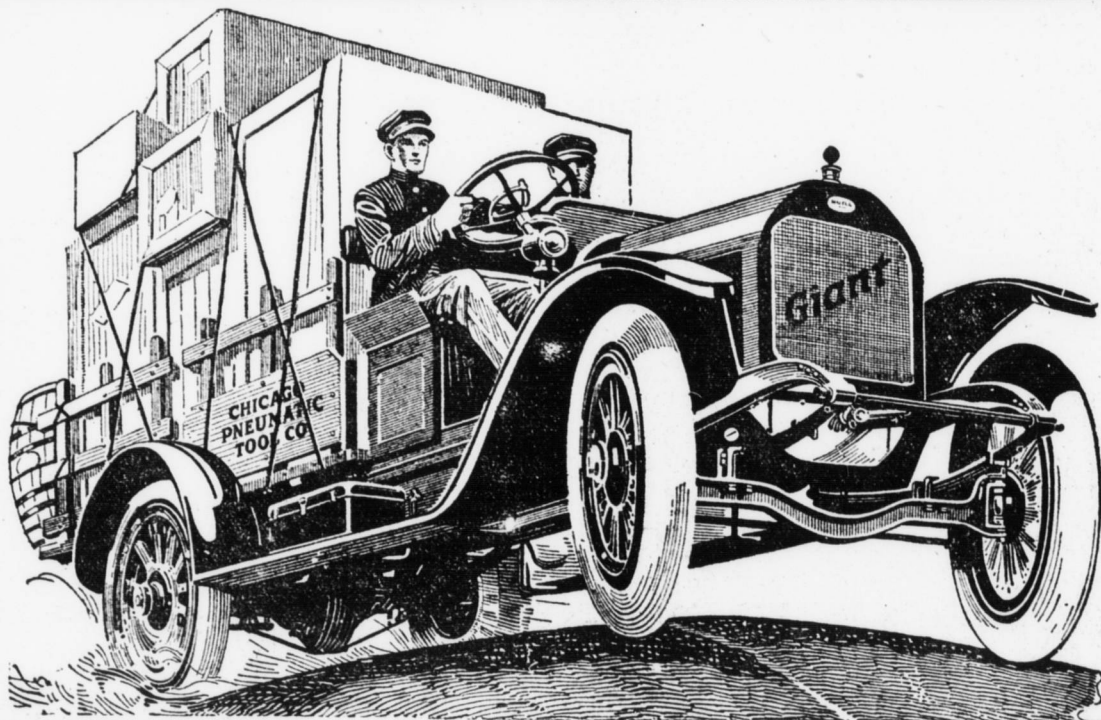
Dial
4616

DISTRIBUTOR

Third and Reily Streets, Harrisburg, Penna.



Live dealers are wanted in open territory who are willing to devote their time to selling one of the best little trucks on the market—one that will gain them a host of friends.



Giant

Motor Trucks

They Burn
Low Grade
Fuel.

The Giant Truck embodies all the latest improved and successful ideas that have brought motor trucks up to their present day efficiency. With a fixed ideal before it, the Chicago Pneumatic Tool Company, utilizing all the power and resources at its command, has striven to bring out a line of commercial vehicles which would reflect credit upon its builders and make friends for the company. Realizing that the value of a motor truck is in direct proportion to the service it renders, neither expense nor pains have been spared to make the Giant a Quality Truck throughout. Only such units whose high quality has been sustained and which have been tried in the crucible of long and successful experience, are used in Giant construction, and prospective pur-

chasers are invited to compare the Giant—unit for unit—with any other truck on the market today. But there is one feature in which the Giant Truck is unique—it operates on low grade fuels. Not only does the Giant get maximum efficiency out of the low gravity gasoline that is offered today but it operates successfully on mixtures of kerosene or distillate with gasoline, making it possible to reduce the fuel cost as much as 50%. The growing inferiority of gasoline, its rising cost and the possibility of governmental restrictions upon its use, emphasize the importance of this exclusive feature of the Giant Line of Motor Trucks. Originally one ton trucks and known as Little Giant Trucks, these trucks are now built in 1, 2 and 3½ ton capacities and constitute the Giant Line.

See them at the Truck and Tractor Show

Chestnut St. Hardware and Motor Truck Co.

DISTRIBUTORS

209-211 Chestnut Street and Seventeenth and Chestnut Streets

J. E. DARE, Prop.

DIAL 4653