

THE STORE THAT CLOSSES SATURDAYS AT SIX

Bowman's

THE STORE THAT CLOSSES SATURDAYS AT SIX

BELL 1001-2356 UNITED

HARRISBURG, FRIDAY, MARCH 21, 1919.

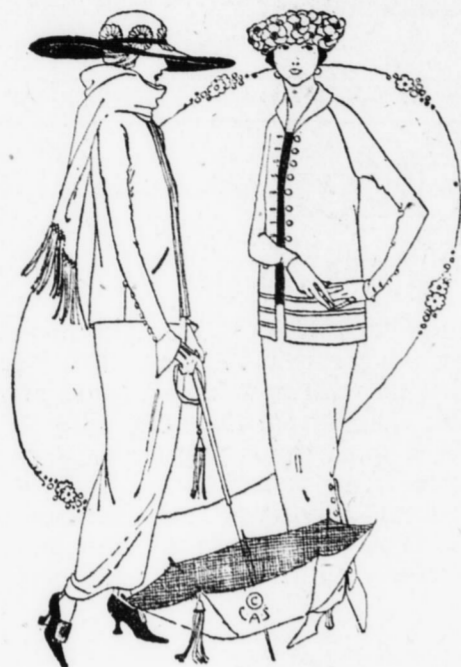
FOUNDED 1871

Advantage of The Eight Hour Bill

There can be no serious objections to Bill One Hundred Forty-five limiting the working hours for women in the various establishments of the state to forty-eight hours a week or eight and three-quarter hours in any one day. There are emergencies when overtime is necessary but they are the exceptions and not the rule, and laws cannot be made to cover the exceptional instances but general conditions.

The tendency of present times is to reduce working hours. It gives greater opportunity for the rest, recreation and educational pursuits that promote greater efficiency. Less number of hours also equalizes the labor market by reducing the number of unemployed. Women, especially, were never constituted by Nature to compete with man in physical endurance, consequently it is for the welfare of future generations as well that woman's reserve powers be conserved whenever possible.

This store has found no inconvenience in adopting seven and one-half hours each day or forty-five and one-half hours each week. Store opens at nine and closes at five-thirty and Saturdays at six.



Tomorrow Only---Choice \$25 and \$35
Scores Of Beautiful Spring Suits Have Been Arranged In Two Special Groups For Saturday Selling

These are of the very newest and prettiest of this seasons models—just received. Tailored models, in serge, gabardine, velour, poplin, shepherd check—semititted and box. Many with tailored notch collar with vestee effect and vests of white pique, colored or figured silks—which add a decided note of distinction to the garments of spring. Some elaborate with braid and button trimming, while tucks and stitching gives a touch of individuality to others. Colors are tan, French blue, rookie, navy and black and black and white check. Remember! In two groups—Saturday only—Choice \$25 and \$35.

For Your Protection

A new device which you will find installed in the Yard Goods Department.

On the various counters, you'll find a little black enameled iron stand, with two spaces on top. One of these spaces looks like a clock face and the other like a multiplication table.

"Measuregraph"

and its purpose is to assist us in giving purchasers of yard goods the exact measurement and charging them the correct price ON EVERY PURCHASE.

With the aid of the "Measuregraph," our people can measure any number of yards of any fraction, exactly to the eighth of an inch. They can tell you the exact cost of, say, 11 3/8 yards of silk at \$2.65 a yard in an instant, and with absolute accuracy.

This means that you can be waited on more quickly than heretofore—a vital consideration in these busy times.

First in the installation of many conveniences for the shopping public, this store is also first to install the "Measuregraph."

To paraphrase a famous advertisement: "We couldn't improve the fabrics, so we improved the selling methods."

New Blouses



The new plaid and polka dot voile blouses in an assortment of colors with pique cuffs and collars. Some with plain buttoned front, others with one large button—\$2.25.

A new collarless Georgette blouse in white and flesh. Dainty colored embroidered front and back and fine tucking. Three small metal buttons complete the front—\$8.95.

Plain, all white middie slip-on effect. Lace front, full sleeve and snug fitting cuffs—\$1.98.

BOWMAN'S—Third Floor

New Spring Draperies

Plain and fancy Marquissette in white, ivory and ecru, 39c to 59c yard.

Sunfast madras; 36 and 46 inches wide in plain and two-toned effects, 85c to \$2.98 yard.

Figured curtain nets in beautiful designs of white and ecru; 36 to 46 inches wide, 39c to \$1.45 yard.

New cretonne in beautiful patterns for cushions, slipcovers and draperies in light, medium and dark colors, 35c to \$1.45 yard.

Plain and bordered marquissettes for overdraperies in rose, blue, green and brown, 49c and 59c yard.

Cedar chests, 36 to 48 inches long. Made of the best Tennessee Cedar, plain and brass bound. Some have trays, \$13.00 to \$32.50.

BOWMAN'S—Main Floor.

The Delineator

Is a Friend of the Home

A magazine filled with information that a woman seeks. On fashions the Delineator is an authority to be consulted. If it is Home Efficiency it tells how to do the old things in new and better ways—if it is General Reading there are articles and stories by the best writers.

The Delineator publishers or representative from Butterick's will be here for ten days longer. She has an interesting proposition to offer you including her season's offers.

Stop at the Butterick Pattern counter and Learn All About It.

BOWMAN'S—Main Floor.

Buy Your Refrigerator Now On the Bowman Club Plan

\$1.00 elivers a Refrigerator to Your Home.

Balance Convenient Payments. Three high grade lines to select from.

Belding Stone Line—Century—Seeger Siphon.

A large assortment of patterns and sizes now on display.

Select the size and style best suited to meet your requirements. Have it paid for when the hot weather arrives.

BOWMAN'S—Fifth Floor.



Women's Lisle Stockings 69c Pair

Another new one in our women's hosiery. A fashioned hose without a seam.

This is a mercerized lisle stocking made to fit from toe to top. It will not lose shape in washing. It is a new fashioned stocking fitted in the knitting with reinforced toe, double sole, four inch grip top and high spiced heel.

A stocking that is slightly and durable. Colors are black, white, brown, navy and gray. An exceptionally good stocking, moderately priced.

BOWMAN'S—Main Floor.

Bulb Planting Time Now

The attractiveness of home is greatly enhanced by the beautiful flowers surrounding the house. Your neighborhood is improved by flowers and your city. So help to make Harrisburg a "City Beautiful" by doing your part to make your garden bloom with pretty flowers. Choice bulbs at the following prices:

- Choice gladiolus bulbs, 20c doz.
- Peonies, large flowering, 2 for 25c
- Extra large gladiolus bulbs, 35c doz.
- Cannas, choice stock, 6 for 25c.
- Dahlias, selected, 4 for 25c.

BOWMAN'S—Basement.

The Corset--the foundation of the Spring Frock

Correct corseting consists of getting the proper corset for your individual figure plus the right corset for the prevailing silhouette. This service can only be attained where corset service is a specialized feature.



We are showing the newest modes in corsets and our corsetiers will be glad to show you the ideal corset for your individual requirements.

We invite you to take advantage of our fitting service here on the privilege of private consultation on all matters pertaining to the corset.

- Redfern, \$3.50 to \$15.00.
- Stylish Stout, \$8.50 to \$10.00.
- W. B. Reduso, \$6.50.
- Henderson, \$1.50 to \$5.00.
- La Boma, \$1.50 to \$3.50.

BOWMAN'S—Second Floor.

Saturday Specials

Dress Making Materials

Selected values and fabrics for Saturday selling only. No samples cut—no mail orders or C. O. D. filled on these specials.

Silk Specials

40-inch Crepe de Chine. A triple thread weave with meteor finish. 35 shades to pick from, \$1.69 yard.

32 and 36-inch Sport Silks. White grounds with colored figures and stripes. The materials are Silk Canvas, Shantung, Pongee and Tussah, \$1.39 yard.

36 and 40-inch foulards. Newest designs and colorings. French twills, radium and punjab silks, \$1.89 yard.

Last Day of Black Silk Sale.

Wash Goods Specials

32-inch Foreign and Domestic Zephyrs. The finest finish and colorings. Plaids, stripes, and checks, 59c yard.

40-inch Fancy Voiles. An endless variety of patterns and colorings to select from, 55c yard.

44-inch plain colored voiles. Full line of light and dark colors, 48c yard.

Dress Goods Specials

54-inch Velour de Laine. Good line of coloring, \$3.95 yard.

46-inch Navy Poiret Twill. A superior grade and finish for the new Dolman Capes, \$3.00 yard.

54-inch Jersey suitings. All the newest Spring shades, \$3.75 yard.

BOWMAN'S—Main Floor.

Men's Nightshirts Special at \$1.19

Here is a value for men that is worthy of consideration.

We have a special lot of men's nightshirts made from exceptional quality fabrics. Not heavy cloths but heavy enough to give good service.

These nightshirts are clean cut, well made and roomy.

Some are plain white, others white with neat fancy trimming. This is a Bowman standard value.

BOWMAN'S—Main Floor.

Transformations

To Devastations Of The "Flu"

One of the bad effects of the recent epidemic has been the ill effects upon women's hair. In many instances this has had to be cut, or even shaved, and seldom has a woman passed through an attack without serious loss of her tresses.

A New Transformation has been devised to tide over the time until the hair may be dressed again without the concealing aid of additional hair and this takes the place even of a full wig, at a very small fraction of the cost, \$1.89.

BOWMAN'S—Third Floor.

Women's Silk Lingerie

These beautiful, soft silken garments will appeal to women who are particular about their dress and know the satisfaction there is in under-appeal.

Our showing is a comprehensive one and covers silk Jersey vest, union suits, Marvelfit bloomers, crepe de chine and satin gowns, petticoats, chemise and carisoles.

Jersey silk and crepe de chine combination suits with lace yokes and new unusual trimming. Just something a little different from the ordinary, \$3.98 up.

Crepe de chine pajamas in new one-piece models. Plain and trimmed styles, \$9.98 up.

Crepe de chine washable satin petticoats, lace and ribbon trimmed with deep flounce and net under lay pink and white. Also tub silk petticoat in flesh and white—\$3.50 up.

Bloomers in crepe de chine and washable satin, full cut. Excellent quality, \$3.25 up.

BOWMAN'S—Second Floor.

