

WHAT YOU SHOULD KNOW ABOUT CARS

(Continued From Page 11)

Recently been added to the above listed models. The average weight is 2,800 pounds. It has a wheel-base of 120 inches.

Premier
Hagerling Motor Car Co., distributors, 1137 Mulberry Street, Booth No. 8.

The aluminum engine that has been a feature of the Premier car will as a matter of course, continue to be a feature of the 1919 product, and this, together with the magnetic gear-shifting system will be kept prominently before the automobile public. The Premier line consists of a single chassis carrying three bodies. The engine is a six, 3 1/2 x 5 1/2, and the wheelbase is 125 1/2 inches. No changes of importance have been made. Its magnetic gear shift has been so successful in winning friends for Premier that its continuance was a matter of course. The factory given over to truck production during the war period is now back on a passenger car basis.

Reo
Harrisburg Auto Co., distributors,

Fourth and Kelker Streets, Booth No. 14.
The new Reo body designs are a very great departure from anything produced by the Reo in the past, and the material and workmanship in each job is a very noticeable improvement in every way. The chassis of the Reo remains virtually the same as in the last six or seven years. The Reo is built in a four-cylinder chassis, with the following body types: Five-passenger touring, three-passenger roadster, five-passenger sedan, five-passenger coupe. All of these bodies are equipped with latest improvements for convenience and comfort, and have received high endorsement where so far displayed. The sedan is finished with the greatest care for detail, and the French velour upholstery in the rear compartment and the high quality moxoco leather in the front seat give the interior a rich appearance, while the finish of the exterior of the car leaves nothing to be desired.

Saxon
Hagerling Motor Car Co., distributors, 1137 Mulberry Street, Booth No. 8.

The model Y 18 Saxon is continued with several changes in the way of refinements. The gas tank has been changed from the cowl to the rear of the car and a Stewart vacuum tank

is used. In addition to the standard blue color, the touring cars are offered in maroon and English gray as standard. The four-passenger roadster comes in a standard dark blue or beaver brown with white wire wheels. The upholstery is genuine leather. The side curtains are of the quick-acting type, carried in envelopes in the top. It is built as a four and a six cylinder car, the former having a 96-inch wheelbase and the six having a 112-inch wheelbase and having larger cylinders than the four. They come in roadster, touring and sedan types of attractive design and finish. The roadster and touring are exhibited.

Stephens
J. Sindy Sible, Jr., distributor, Third and Cumberland Streets, Booth No. 10.

The Stephens remains practically the same as last season. There are six body designs built on one standard chassis covering the three-passenger roadster to the five-passenger sedan. One feature is the five-passenger Victoria. Has perfected six-cylinder overhead valve engine with 118-inch wheelbase.

Studebaker
M. L. Mumma, distributor, Third and Kelly Streets, Booth No. 2.
Studebaker activities are now confined to the production of three chassis models with six body styles. The line, first disclosed at the shows last year, has been termed the most attractive and promising the big corporation has had since its inception as an automobile manufacturer. The car this year includes the light four and light six touring, the seven-passenger six, the light four sedan. Refinements in design are to be seen in all models. A new sedan has been added, on the light four chassis and the light six chassis. The latest model sedan has long, sweepingly graceful lines and the high and narrow design of the radiator and hood, and the width and shape of the doors and curve of the fenders all blend for harmony.

A feature of this body is the method of construction to make this car essentially rattle-proof.

Vellie
Rex Garage and Supply Co., distributors, Third and Delaware Streets, Booth No. 15.

The Vellie line includes a total of nine body models, which are carried on two six-cylinder chassis. The chassis are virtually alike, however; the main difference is found in the wheelbase, there being a 65-inch and 84-inch chassis. The line includes a touring car, roadster, sport model, sedan, a chassis and a specially finished exhibition engine.

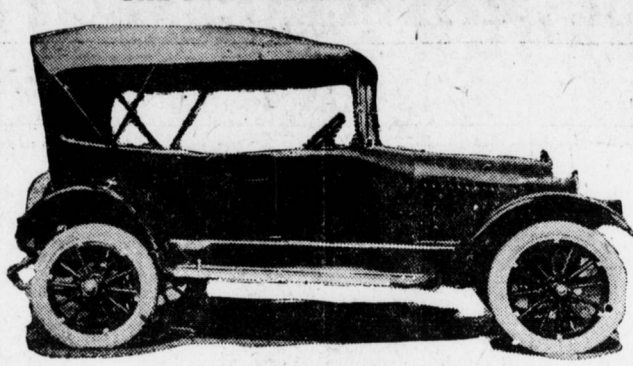
Willys-Knight
Overland-Harrisburg Co., distributors, 212 N. Second Street, Booth No. 1.

The Willys-Knight line includes eight models, all representing the latest achievements in the art of coach builders. Among the most popular of these models is the Willys-Knight Four touring car. It is of the stream-line design, with a sloping windshield and crowned fenders. The upholstery is hand-buffed, long-grained leather and is laid over resilient spring cushions. The seats are form fitting. The tonneau floor is covered with heavy carpet and the front compartment with linoleum. The Willys-Knight Four coupe, a four-passenger type, combines year-around utility with style and comfort. The Willys-Knight Eight models, the seven-passenger touring car, the four-passenger coupe, the seven-passenger sedan and the seven-passenger limousine are ideal.

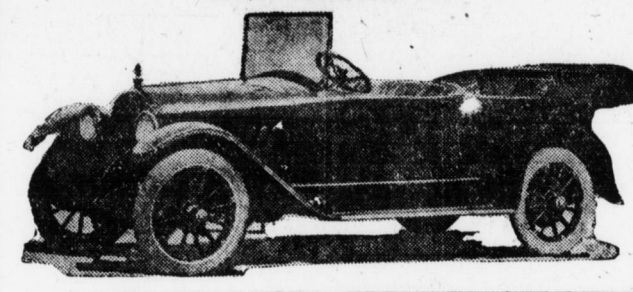
Interesting Scientific Topics Discussed

"What are the different sciences? What are the exact sciences?" asks F. J. Brooklyn.
The word science, in its general sense, means organized knowledge, but in its general use it is applied to one kind of knowledge only, viz., that of natural phenomena, or the knowledge of things recognizable by the senses.
This restriction is not intended to assert that there is no other kind of knowledge than that of physical phenomena, although it does imply that no other kind has been put to the test of experiment and established by evidence verifiable to the senses.
In other words, science, as generally defined to-day, is restricted to what we can see, touch, hear, smell, taste, and, by extension of these fundamental senses, measure, weigh, combine, decompose, etc. As to anything beyond this is simply

THE DIXIE FLYER TOURING CAR



THE AMERICAN SIX



says: "I know nothing of it, and since I can get no hold upon it, it does not come within my province." It would be well for the peace of mind of many thousands if they would talk science at its word and not persist in suspecting it of an intention or attempt to oppose or upset any belief lying outside its clearly defined domain.

If such beliefs find themselves in opposition to facts that science, by its own tests, regards as established, it is simply an unavoidable result of the situation, as if, for instance, a man should say: "I have been divinely told that I can step over the edge of this precipice without falling" and, stepping over, is dashed to pieces.

The "different sciences" are only the various branches of this one science whose aim is to ascertain and systematically arrange for their better comprehension the facts and laws of existence in this world and this universe, which we consciously inhabit as long as we live, and concerning which we know nothing verifiable except what our senses and what logical reasoning based upon the revelations of our senses tell us. It may be that when our bodies die our personal selves escape in an intangible form and continue to exist forever; it may be that in another form or body we shall re-inhabit this earth or go dwell in some other world under the light of some other sun. Science does not know, but it can get no grip on the elements of the problem; but if it saw any way to get such a grip you may be sure that it would seize it with the utmost eagerness. But anybody who asserts that science denies the existence of something imperishable in man or of an intelligence greater than man's goes a great deal farther than science accompanies him.

To decline to discuss what you do not know and to deny the existence of what you do not know are two very different things. The true scientist to-day is as modest as was his great progenitor, Isaac Newton, who declared that he seemed, in his studies, like a child gathering a few pebbles on the seashore while the illimitable ocean lay beyond.

Every branch of science is "exact science" if it is worthy of its name, but the term has sometimes been restricted to those branches which rest largely or entirely upon a mathematical basis as distinguished from the so-called "natural history sciences," which depend upon observation only. However, it seems to me there is no good reason for attempting any general distinction of this kind. It is apt to be invidious, and it serves no useful purpose.

Here is a grouping of the sciences taken from the Standard Dictionary, which embraces, as you will see, more than has been admitted under the name of science as I have used it above:

"The sciences are divisible into: (1) the mathematical, treating of quality; (2) the physical, treating of matter and its properties; (3) the biological, treating of the phenomena of life; (4) the anthropological, treating of man, and (5) the theological, treating of the Deity."

The last item in the above should have no place in the list if we confine the term science to the field of the senses. That it ought to be so confined is, I think, evident from the fact that the methods now universally recognized as characteristic of what everybody has learned to regard as science are inapplicable to theology.

Physical science rests upon physical observation and physical experimentation; theological "science" is based upon faith, rejecting absolute by the kind of verification that the other as absolutely demands. To put them both under the same category, as if they were different branches, or aspects, if the same thing, is not only misleading but mischievous.

It belittles theology, which has to do with God, to link it with a term that has come universally to stand for man's imperfect knowledge of the visible and tangible world in which he lives, and it misrepresents science to couple it, in spite of its protests, with something outside its chosen sphere. It is a pity that some less comprehensive and more definitive term, something that had never been used with a wider meaning, was not selected to describe what "science" now means to the vast majority of men.

Miners Agree Profits in Coal Go to Owners, Middle Men and Rulers

By Associated Press.

London, March 15.—The revelations since the opening of the inquiry into the coal mining industry has confirmed the miners in their suspicion of profiteering by the owners, the distributors and the government, William Straker, secretary of the Northumberland Miners' Association, declared before the commission of inquiry to-day. Straker added that it was, therefore, useless to ask the miners to withdraw their notices to strike until the government had accepted the principle of nationalization.

Straker was the first witness on behalf of the workers, whose turn it is to be heard.

Spartacans Continue to Resist Government Forces

By Associated Press.

London, March 15.—Spartacan forces still retain part of the Berlin suburb of Lichtenberg, and are stubbornly resisting the government forces, an Exchange Telegraph dis-

patch from Copenhagen says. Fighting is continuing in Lichtenberg and also in the Karlshorst.

SCORE HURT IN CRASH

By Associated Press.

Wilkes-Barre, Pa., March 15.—Twenty persons were injured, eight of them seriously, when a trolley car ran wild down a grade here today

and crashed into a standing freight train. Slippery rails caused the car to get beyond control.

STRIKE SITUATION SERIOUS

Washington, March 15.—Although the Cuban general strike has been called off formally, a dispatch to the State Department today from Havana, says the situation still is serious and uncertain.

Premier

ROAD-RACK has no effect on Premier. Pound over the rough going as hard as you will, but that eight-inch, steel-girder frame under you will stand the strain.

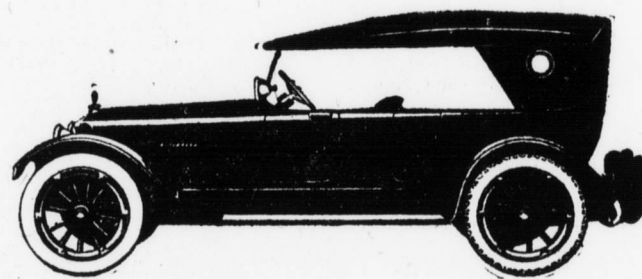
This is just one of the many Premier Super-Qualities that keeps this car "young" and noiseless.

Let us show you what this construction will save in up-keep expense, alone.

Hagerling Motor Car Company

Distributors
East End Mulberry St. Bridge, Harrisburg, Pa.
Bell 1396

AGENTS WANTED IN
Sullivan, Lycoming, Columbia, Northumberland, Union, Snyder, Mills, Juniata, Franklin, Cumberland, Adams, York, Lebanon, Moutour, Lancaster, Fulton Perry and Dauphin Counties.



WHEN YOU BUY A MOTOR TRUCK



Be Sure You Know Its Dependability

Buy a motor truck, to get the one that is just what you need for your particular business, should require considerable thought.

It's dependability in the work you require of it, it's economy, it's performance under any strain, are all points for consideration.

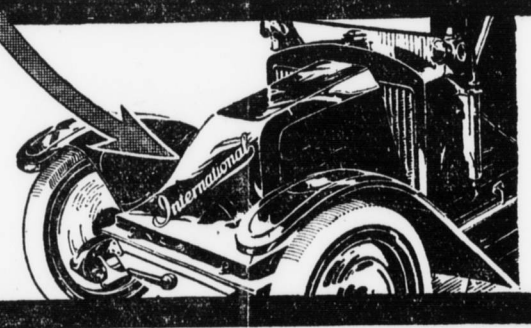
The number of Internationals on the street attest to their DEPENDABILITY, their economy, their all-around ability of performance.

For farm work, for long or short hauls, for light delivery, for any and every business, Internationals have proven their worth by years of service.

SEE AN INTERNATIONAL BEFORE YOU BUY

Crispen Motor Car Co.

Distributors
Salesrooms 103 Market St. Service Station 29 N. Cameron St.



Vim Trucks

One of the greatest satisfactions of the merchant and business man today is a dependable delivery car. Dependable does not mean spasmodic but every day — 365 days a year — service. That is the kind of service more than TWO HUNDRED VIM OWNERS IN CENTRAL PENNSYLVANIA are getting from their Vim Light delivery trucks.

It is a great load lifted from your mind when you know that your delivery costs are at a minimum; when you are delivering your goods on a profitable basis. That is what a Vim truck means to the business man.

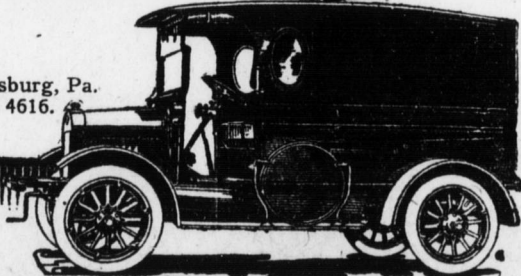
Let us show you a Vim Truck today. There are 14 different body designs — sure to be just what you need for YOUR business. We have practically every model on hand for immediate delivery.

Call, Phone or Write

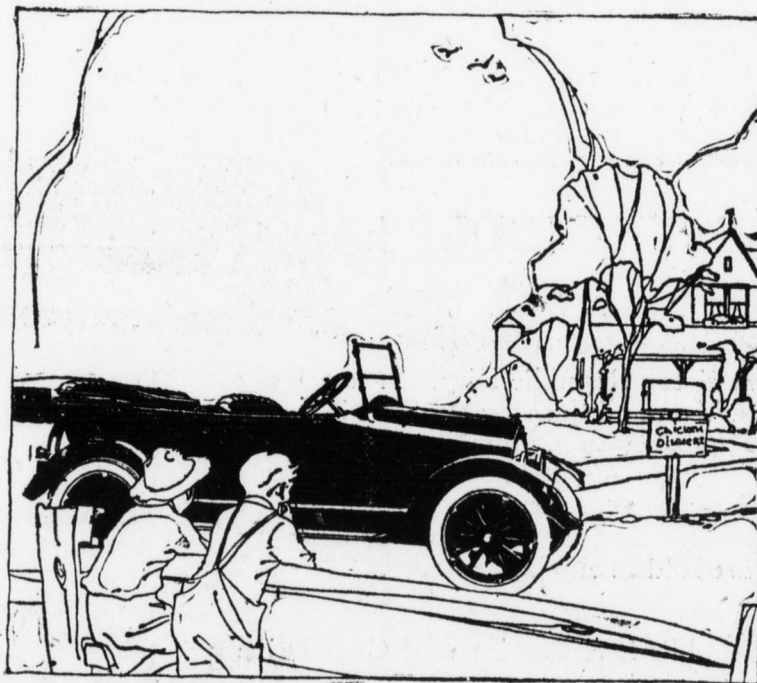
ANDREW REDMOND

Distributor.

Third and Reily Sts. Harrisburg, Pa.
Bell 2133 Dial 4616.



Overland



"Approved"

The circle of friends the Overland car makes is continually widening. These friends have spread the good news of the comfort, performance and economy of the Model 90 car, until owners now number more than 115,000. These owners are safer guides for you to follow than mere specifications.

The Overland-Harrisburg Co.

212-214 North Second Street
Open Evenings
YORK BRANCH: 128-130 West Market St. BELL, 4370
NEWPORT BRANCH: Opposite P. R. R. Station

Overland Model Ninety Five Passenger Touring Car \$985; Sedan \$1495; f. o. b. Toledo