

WHAT YOU SHOULD KNOW ABOUT CARS

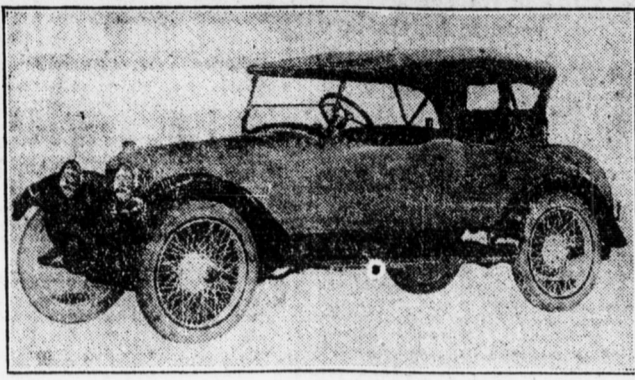
[Continued from First Page.]

parts, mounting on this chassis the exclusive anniversary bodies, both in seven and four passenger types. On this same chassis they are building a new car, which will be known as the Apperson for 1920. It will differ from the anniversary models in body and design only. This model will come thru a seven-passenger touring car and four-passenger sportster.

Briscoe
M. Brenner and Sons Motor Car Co., distributors, 1702 N. Third Street, Booth No. 19.

Briscoe cars are continued for 1919 without change. It has the same high, narrow radiator that characterized it last season, and slanting windshield, giving it an added touch of speed and power. The engine has a comparatively long stroke. There is also an unusual drive of the generator from off the cam shaft. The cone clutch is somewhat different from most types, being of the inverted kind. In the body is a door between the front

PREMIER FOUR-PASSENGER MODEL



seats; also an unusual combination.

Buick
George B. Zeck, distributor, 25 S. River Avenue, Booth No. 18.

The Buick, in addition to a number of minor improvements, has introduced a system of self-lubrication of rocker arms and a dustproof cover

over the top of the motor. Otherwise the long-used standardized mechanical features have been continued. Convenience has been considered, along with efficiency, in the new and better bodies that have been designed and lighter, stronger materials are used. In line with 1919 models they have reached their highest state of development. They include the three-passenger touring car, five-passenger touring car, coupe for four, sedan for four, seven-passenger touring car, and sedan for seven. The Buick is built in two chassis sizes, 118 inches and 124 inches. The six-cylinder valve-in-head type of motor is used.

Cadillac
The Cadillac is not on display at the Auto Show but is sold in Harrisburg by the Cadillac-Hinton Company, 3115 S. Cameron Street.

Case
Conover Motor Company, distributors, 1244 Howard Street, Booth No. 7.

The Case Company is building the Case six, model N, in the same chassis and body design as offered in 1918. The closed car has been dropped. Those continued are the seven-passenger touring car and four-passenger roadster on the same chassis. A Continental engine is used. The wheel base is 125 inches. Columbia rear axle, Rayfield carburetor, Borg & Beck clutch, Grant Lees gearset and other standard units are employed. The top of the body line from cowl to rear seat is horizontal, and the whole design gives a conception of speed and comfort further enhanced by the decidedly sloping, folding windshield. Mahogany paneling is used in the cowl board and rear of front seat.

Chalmers
Keystone Motor Car Co., distributors, 57 S. Cameron Street, Booth No. 16.

The Chalmers has two models this year, very similar in mechanical construction, except for the fact that one has a wheelbase of 117 inches, while the other is 122 inches. The engine in both cases is a six with cylinders 3 1/2 x 5 1/2. With the two wheelbase lengths it is possible to mount a wide range of body styles, and no less than nine are offered, including both open and enclosed cars.

Chandler
Andrew Redmond, distributor, 1507 N. Third Street, Booth No. 11.

The Chandler Company is another one of those manufacturers who have seen fit to concentrate on one chassis model only, building it to such a high standard of perfection that only minor mechanical changes have been found to be advisable. But, as evidenced at the New York and Chicago shows, they are following the trend of the day toward individuality in body designs, both of the closed and open types. But the Chandler coupe and sedan are, perhaps, the most distinctively new types in their line this year. Both are beautiful, dignified designs, free from any suggestion of the faddish or freakish. The Chandler sedan, with four wide doors, seats in comfort when the auxiliary chairs are in use. In the driver's seat is staggered slightly forward of the wide seat, which accommodates two persons. A folding chair of ample size and perfect comfort opens to a position alongside the driver.

Chevrolet
Driscoll Auto Co., distributors, 149 S. Cameron Street, Booth No. 17.

Chevrolet this year has two four-cylinder models, the 490 and F. B. The former comes in a five-passenger touring car, two-passenger roadster, five-passenger open sedan and two-passenger coupe. The F. B. comes in three body types, a five-passenger touring car, two-passenger roadster and five-passenger sedan. The engine of both has a bore and stroke of 3 1/2 x 5 1/2 inches. Model 490 has a wheelbase of 102 inches and gravity feed, while model F. B. has a 110-inch wheelbase and vacuum feed. Otherwise the chassis is the same as to units.

Cole
Harrisburg Auto and Tire Co., distributors, 131 S. Third Street, Booth No. 6.

Six body models carried by a single eight-cylinder chassis comprise the line of cars manufactured by the Cole Motor Car Company, of Indianapolis, Ind. It is explained that the

One Auto to Each 18 Persons in U. S.

The latest automobile census shows that there is one motor vehicle for every 18 persons in the United States, the registration figures for the various states totaling some 5,945,000 cars and trucks. Briefly, there are almost six times as many cars and trucks now than there were seven years ago. And making the comparison finer, the figures for the close of 1918 represent an increase of 20 per cent over those for 1917, the net gain during the last year being slightly over 1,000,000—and this in a wartime period.

Cole aero-eight was developed during the early days of the war, that a number of detail improvements have been developed in the meantime, so that there is much interest at the Cole booth. As gratifying to their poise as a monoplane, with low beveled side panels, massive fenders, high cowls and sharp, keen lines, they have about them a material individuality that is instantly appealing. The Cole line consists of toursters, roadster, sportster, touring coupe, touring sedan and town car.

Crow-Elkhart
Monn Bees, distributors, 13th and Thompson Streets, Booth No. 20.

The Crow-Elkhart for 1919 is practically the same as last year. It is built on one standard chassis with five different body designs. There is a two-passenger, four-passenger and five-passenger models. It has the multi-powered overhead-valve motor and is 115-inch wheelbase.

Dixie
Dixie Sales Co., distributors, Sixth and Bridge Sts., New Cumberland, Booth No. 9.

The Dixie Flyer is a new car to Harrisburgers. It is built by the Dixie Motor Car Co., of Louisville, Ky. There are three models, the five-passenger touring car, four-passenger roadster and the five-passenger convertible Sedan. It has a 30 h. p. motor, 112-inch wheelbase and standard equipment. It sells for a trifle over a thousand dollars.

Dodge
Keystone Motor Car Co., distributors, 57 S. Cameron St., Booth No. 16.

As far as general design and construction are concerned there are no changes in Dodge Brothers cars, in fact, changes are hardly to be looked for in a line that stands so firmly on the basis of complete standardization, a policy adopted and followed since the manufacture of Dodge cars was begun.

Essex
Gomery-Schwartz Motor Car Co., distributors, 116 Market Street, Booth No. 5.

Essex is displayed at the automobile show this year for the first time. It was designed by some of the leading engineers in America to meet the demand for a high-grade car, light in weight, economical in upkeep and moderate in price. The car is built at the Hudson factory in Detroit. The Essex is so sturdily constructed that it rides over the roughest roads with the smoothness of a car of much greater weight. The springs of the Essex are unusually long for a car of its size.

Ford
Williams Motor Co., distributors, 221 N. Second Street, Booth No. 2.

No mechanical changes have been made in the Ford, save for the equipment of the closed models with Liberty starters, for the coming season. It is expected that the starter will be applied to as many cars as is possible with the output of the starters, and ultimately it may be expected as standard equipment with all Ford body types. Four types are offered, including five-passenger touring, two-passenger runabout, two-passenger coupe and five-passenger sedan.

Haynes
Miller Auto Co., distributors, 58 S. Cameron Street, Booth No. 4.

The Haynes 1919 chassis has but few changes, using the same motor and transmission as heretofore. The frames are deeper and heavier gage material; the spring construction is much longer and is made flat, insuring riding qualities. A Bendix drive starts the simpler the construction and lessens the number of parts. There is but one chassis for all models, having 127-inch wheelbase. Refinements which make for comfort, pride and satisfaction are exemplified in the many new features. An inclined two-piece windshield affords better vision and lends charm to the appearance. Rich simplicity marks the style of this season's Haynes coupe, sedan and limousine, the three closed cars offered. Four passengers are accommodated in the coupe by using the auxiliary seat.

Hudson
Gomery-Schwartz Motor Car Co., distributors, 116 Market Street, Booth No. 5.

The Hudson super-six is built in a single chassis model, which has been standardized and brought to a high state of development. Nine different body designs are offered this year, including seven-passenger phaeton, four-passenger phaeton, four-passenger coupe, sedan, limousine, touring limousine, town car and three-passenger cabriolet. Perhaps its outstanding mechanical feature is the cone-beam crankshaft, which caused something of a sensation when it made its first appearance because of the high speed, high power and smooth running made possible by its features. With others, has given the car a reputation for road ability. Mechanically the cars remain this year fundamentally the same with certain refinements.

Kissel
M. Brenner and Sons Motor Co., distributors, 1702 N. Third Street, Booth No. 19.

The Kissel Motor Car Company has concentrated for 1919 on a single six-cylinder chassis model, having eliminated the twelve-cylinder mode I For years Kissel cars have been noted for their fine body work, particularly for enclosed cars and types suitable for use during the four seasons. It calls its line the "Hundred Point Six" and it includes sedan, four-passenger Gibraltar body, equipped also with semi-Victoria style summer top; also sedan top at

KISSEL URGES CO-OPERATION

Says Industry Now Needs One Hundred Per Cent Enthusiasm

G. A. Kissel, president of the Kissel Motor Car Company, says:

Now that the war is over and victory won, our faces are turned toward a new era of unwonted promise. We have a large debt, due to war expenditure, but happily we have plenty of money to pay it with. Our country is physically uninjured, our factories, buildings, fields and machinery are intact.

The automobile show this year finds America with more wealth, mineral and agricultural, than in the whole of Europe, and we will start more prosperously and with much greater possibilities than any other nation on the globe.

With all these facts before us, it puts the question of cheerfulness and satisfaction to the close of 1919 entirely up to ourselves. The average American business man, as well as the financial powers, have every confidence in this country and its recuperative powers and are more than willing to go ahead and take those average risks needed to proceed without delay.

It is up to us of the motor car industry—manufacturers, wholesale or retail—to make our plans for getting our just share of business. Just so would our country lose its present power position if the financial and business interests of our government did not plan ahead and proceed with such plans.

We can all obtain the greatest results by concentrating to a definite purpose or ideal, then with it the fullest co-operation of all interested. Just so did Woodrow Wilson do when he set out that "Right and justice was the purpose and ideal which mean Americanism" regardless of life or financial loss, and concentrated on that at all times, as well as co-operated with and had other countries co-operate with us to that end even for the future by the establishment of the League of Nations.

It is our purpose to make good automobiles. To that end we will concentrate on one passenger car chassis, namely, the custom-built chassis, with several body styles, making such betterments as have been necessary to have it as nearly 100 per cent perfect a sportster.

When our government called for assistance, we gladly offered our plant, organization and facilities, even to sending to the front about 250 men. When we were asked to produce a large daily output of trucks on a very short notice, we first thought it impossible, but with the American spirit of concentration, co-operation and hard work, we were able, in a few months, to do what previously seemed impossible.

It is with the same spirit of enthusiasm and co-operation that we are now proceeding with a definite ideal ahead of us.

Geared-to-the-Road
Located in Wormleysburg

The West Shore Repair Shop and Battery Service Station, Wormleysburg, is featuring Gould Storage

Battery Service. Gould Storage Batteries have been used in this vicinity for years by a large number of our car owners and are said to be much in favor on account of their substantial and dependable qualities. Their claim of superiority is based on 'Dreadnaught plates' super-hard and offering tenacious resistance to disintegration.

The West Shore Auto Repair Shop and Battery Service Station specializes on Batteries and Auto Electrical Work of all kinds. It is equipped to test, recharge and repair starting and lighting batteries and generators of all makes as well as doing all kinds of automobile repairing.

THE NEW APPERSON TOURSTER



STOP THAT DESTRUCTIVE POUNDING FROM BELOW THE SPRINGS

Cradle That Unsprung Weight On Miller Uniform Cords

Those dead-weight blows of the load that springs can't reach are what shatter cars to pieces long before their time. Double your speed and the blows are many times harder. It's a problem that motor car engineers can't solve.

Now comes a way that practically ends this evil—The Miller Cord Tire—buoyant, over-size, elastic. Thousands of cable cords as strong as bow-strings, floated in new live rubber, layer on layer. It gives and takes as it rolls on the rough of the road—it neutralizes shocks—you ride with bird-like ease.

No. "Second Bests"
Miller Cord like Miller Fabric Tires are Uniform in Mileage—tire after tire. That is because of our system of Uniform workmanship—because all Miller builders are trained to a championship standard.

Each builder is rated on every tire he makes. If ever one comes back, his standing is penalized. Thus have we rid our tires of variable workmanship. And thus have we ended variables in mileage. The result is that every Miller is a long-distance runner—not only a few, such as some call

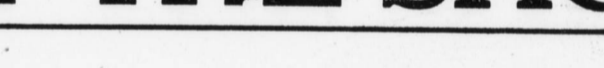
their "lucky" ones. Our Uniform System admits no "second bests."

Geared-to-the-Road
Uniform Millers are the only tires Geared-to-the-Road. This tread of many caterpillar feet engages the ground like cogs—the scientific way. That means positive traction, full power ahead and safety.

Put a pair of these tires on opposite wheels of your car. That test has proved their Uniform Mileage to thousands. Go to the authorized Miller dealer, or write us for his name.

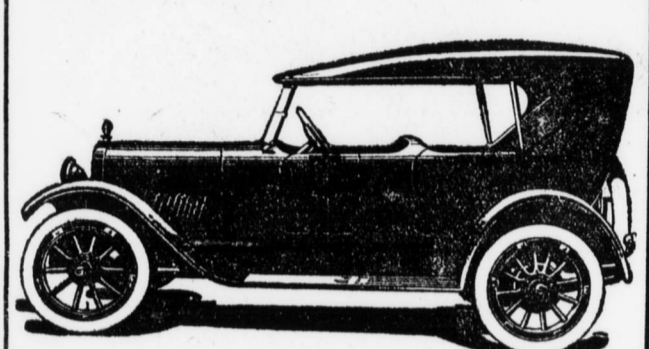
STERLING AUTO TIRE CO.
DISTRIBUTORS
109 S. SECOND ST., HARRISBURG, PA.

Dealers—Write for attractive agency proposition in open territories



Miller tires

Don't Penalize If Ever One Comes Back



See the New ELCAR At the Show

There are numerous reasons why you will approve the new ELCAR models. Every car that leaves the Elkhart factory bears the unmistakable stamp of masterworkmanship and "built-in" quality that has characterized ELCAR vehicles for over forty-six years.

The newer ELCAR models comprise both four and six cylinders.

The four-cylinder models are fully equal to the sixes in "dollar for dollar" value—their choice a matter of individual preference. They are alike in wheel-base, general chassis construction and in body design, construction and finish, their only difference being in motor, clutch and transmission.

The ELCAR recognizes no peer in abundance of power, efficiency of spring suspension, easy steering and economy in cost of operation and upkeep.

WE WILL ALSO HAVE ON DISPLAY

CASE TOURING CARS

The new Case cars for 1919 will appeal to the great majority of buyers, as it is a car coming within the medium price range and still possessing unusual features of comfort and utility without extravagance.

It is of six-cylinder type, of greatest all-around flexibility, with a fine motor ably supported by selected units that have proven best under the hardest test we could devise.

In this car utility is supplemented by a body design and refinement of finish that mean roomy tonneau and distinctive good looks. No detail of complete comfort is lacking. It is a car of which you can be justly proud.

CONOVER MOTOR CO.

1334 HOWARD ST.

DISTRIBUTORS OF CASE ELCAR WHITE TRUCKS

Advertisement for Excelsior Auto & Battery Co. featuring 'Exide' starting batteries. Includes text: 'Superior Qualities of "Exide" Starting Battery Proven by Thirty-one Years Experience', 'When you equip your car with an "Exide" you are backing up your starting and lighting with a battery developed by thirty-one years of experience in battery building.', 'We are battery specialists and repair all makes of batteries but when your battery is worn out we advise an "Exide" because we know its superior qualities.', 'Excelsior Auto & Battery Co. Eleventh and Mulberry Sts.', 'Authorized "Exide" Distributor and Battery Service Station'.

Large advertisement for Studebaker Cars. Includes text: 'AT THE SHOW', 'New Studebaker CARS', 'NOW, at the Automobile Show, you have an unusual opportunity of making a comparative analysis of America's leading automobiles.', 'There the New Studebaker Cars are conspicuous for their beauty of line and mechanical excellence.', 'Check them up, point by point, and judge them by comparison with other cars of recognized high quality.', 'Note carefully each outstanding feature. Study their construction from every angle. Ask questions—know why every owner of a New Studebaker Car is so thoroughly enthusiastic.', 'The New LIGHT-FOUR is obviously a quality car—probably the lowest priced quality car on the market. Economical to buy and maintain and big enough for the whole family.', 'The New LIGHT-SIX is unusually attractive in design and remarkable for its completeness of appointments and refinement of finish.', 'The SEVEN-PASSENGER SIX gives luxury and style at a price well within the means of the conservative investor. Its individuality goes hand-in-hand with excellence of construction and maximum service.', 'Studebaker quality, dominant for 67 years, is reflected in these new cars. They are the most highly perfected product of Studebaker experience.', 'You will find the New Studebaker Cars the center of attraction at the Automobile Show.', 'M. L. MUMMA, Distributor, Evangelical Pub. Bldg., Third and Reily Sts.'