

AUTOMOBILE NEWS

TIMELY LOCAL FEATURES OF INTEREST TO AUTOISTS

BY ALFRED P. DAVIES, AUTO EDITOR.

FREE LECTURE AT TECH ON TRUCK EFFICIENCY

Thursday evening, March 12, at 7:45 o'clock in the Technical High school building in Walnut street, everybody interested in trucks or truck operation in any way are invited to a free lecture on "How to Increase Truck Efficiency." This lecture will be delivered by E. G. Schich, manager of the Philadelphia Branch of the Goodyear Tire and Rubber Company. He will be assisted by A. B. Shore who is manager of the Truck Tire Department at Philadelphia.

One of the features of the lecture will be motion pictures of the big "Pioneer" Pneumatic Truck Tire that was originated by the Goodyear Company, showing in actual operation in the big Boston to San Francisco trans-continental journey. The lecture clearly explains all the

points of interest and is highly instructive in every way. A demonstration of applying and removing these tires will also be given.

The "Pioneer" big pneumatic truck tires, made in sizes ranging from 36x8, 38x7, 40x8 and 42x9, have proven highly efficient. These tires have been made by the Goodyear Company for four years and on the average make about 15,000 miles. Any number of them have exceeded the 20,000 mile mark. The company is now making sizes 44x8 and 44x12 that are in use on their big trucks that operate fast express between Akron, Ohio, and Boston. There are seven of these big 5-ton trucks that are always on the go, day and night, in this service making the round trip in six days. If ever there was a gruelling test for a tire this is one and the big pneumatics are not only standing the strain but

are proving much more efficient in every way than the solid tire. A speed of forty or fifty miles an hour is obtainable with pneumatic tires and the cost of upkeep to the truck is brought down to a minimum. They are practically puncture-proof.

Next week a number of the leading merchants will display these tires in their windows and during the show there will be at least eight trucks equipped with the Pioneer pneumatic truck tires.

This lecture is sure to prove educational to a large degree and a big crowd is expected to take advantage of it.

AUTOMOBILE SHOW TO START NEXT SATURDAY

Next Saturday, March 15, is the big day in automobile circles in Harrisburg for then the passenger car and accessory exhibit for 1919 starts. The following week the truck and tractor show will be held for three days beginning Monday. Both these shows will be held in the warehouse of the Overland-Harrisburg Company at 26th and Derry streets.

Little change will be noted this year in the various models that will be on exhibition. There will be one new car this year that has not been seen here in a show, the Essex. This car created considerable favorable comment at the New York Show and is sure to do the same here.

The many accessories that have been created because of war; the many improvements along this line will cause considerable wonderment. There is little left to the imagination after passing along the accessory booths this year.

Complete details of the show with all the important happenings; points about the cars, stories of the army truck, the aeroplane and the Liberty motor that will be on exhibition will be carried next Saturday in a special automobile supplement that will be a part of the regular paper. Many interesting and instructive stories, pictures, etc., that will come in handy later in the summer when on touring trips will be found in this special supplement.

NEW CUMBERLAND FIRM SELLING DIXIE FLYER

The Dixie Sales Company under the management of F. R. Shetter and with

headquarters in the New Cumberland Garage at the corner of Sixth and Bridge streets, New Cumberland, are the Central Pennsylvania distributors for the Dixie Flyer, one of the cars that will be on exhibition at the coming Automobile Show.

This car while not so well known in this territory has gained an enviable reputation in sections where it has been handled by a live dealer. It is a medium-priced car built in three different models, the five-passenger touring and the four-passenger roadster, selling at a little over a thousand dollars and the five-passenger Sedan, selling at close to fifteen hundred.

The Dixie Sales Company have just taken on the agency for this car and are looking forward to a promising season. They unloaded a couple of carsloads this week and have another carload in transit.

PHILADELPHIA AUTO SHOWS OPENED, LASTS TWO WEEKS

Today is opening day of the passenger car show in Philadelphia. Like Harrisburg, the Philadelphia show will cover two weeks with passenger cars and accessories holding the center of attraction the first week and trucks and tractors the second week.

HAGERLING GETS SHIPMENT OF PREMIER'S THURS.

A shipment of Premier cars, the first to arrive here since the Hagerling Motor Car Company was appointed the distributors for Central Pennsylvania, arrived in Harrisburg Thursday and were unloaded immediately. These cars will be on exhibition at the auto show and before taken out to the Overland-Harrisburg ware rooms will be on exhibition at the salesrooms of the Hagerling Motor Car Company at 1137 Mulberry street.

While the Premier is no stranger to Harrisburg it is not so well known as many of the popular priced cars. The Hagerling expects to put them across here to such an extent that they will be well known as the "Lil ole Ford."

One of the big features of the Premier is the electric gear shift which is placed on the steering wheel post and does away with the gear shifting lever. The gears are all shifted by simply pressing a button. This feature has been proven to be highly successful the same as electric lights and electric starting and is becoming more popular as it becomes better known.

The lines of this car as well as the motor and many of the other important points of the car are of the latest designs and improvements.

ARMLEDER TRUCK SOLD BY HARRISBURG WELDING AND MACHINE CO.

Armleder motor trucks, made by the O. Armleder Company, of Cincinnati, are sold in the Harrisburg territory by the Harrisburg Welding and Machine Company. These trucks are made in different models to meet the requirement of practically any kind of hauling business.

Since this company was appointed local distributors they have sold a large number in this vicinity and with the coming of spring expect to place a large majority of the business that will be done in trucks here.

SELDEN TRUCKS PLAYED BIG PART IN WORLD WAR

In a recent circular sent out to users of Selden trucks from the Selden factory at Rochester, army photographs of the Selden in operation at the front, large fleets of trucks on their way across the pond and many other interesting articles of the big part the Selden played in the world war was depicted.

Along with these photos of the Selden in the war were a large number of photos of Seldens doing practically every kind of work under the sun. One of the photos was a large Selden truck used as a stage coach for carrying passengers between two cities and another was a large undertaker's machine with trucks for hauling coal, express machines, lumber machines, ice cream machines and others too numerous to mention sandwiched in between.

There are quite a number of Seldens in operation in Central Pennsylvania. The Selden Truck Distributors at 1913-25 Market street report a number of sales so far this Spring and a large number of prospects that will be closed in the near future.

DATES FOR TRUCK AND TRACTOR SHOW MARCH 24, 25, 26

Some of the dealers as well as the public were informed that the Truck and Tractor Show that is to be held here this year immediately following the passenger car show was to start Tuesday, March 25, and continue until Thursday, March 27. This is an error. George MacFarland, president of the Motor Dealers' Association said this morning that the date for this part of the show were Monday, Tuesday and Wednesday, March 24, 25, and 26.

RAYFIELD CARBURETOR INCREASES MILEAGE FROM NINE TO TWENTY MILES A GALLON

Norman Hoffman, proprietor of the Hoffman Garage, who drives a Chalmers Six, 1917 model, recently purchased a Rayfield carburetor from Frederick's Garage, the local agents for the Rayfield and applied it to his car. Mr. Hoffman had previously been getting on an average of nine miles per gallon out of his car with the old make of carburetor and on the trial trip with the Rayfield he made twenty-three miles per gallon, according to Mr. Frederick in a conversation this morning.

SPACE ALLOTTED FOR TRUCK SHOW THURSDAY

Thursday evening at a meeting of the Motor Dealers' Association in the offices of the Front Market Motor Supply Company at 199 Market street, the space for the truck and tractor show was allotted. On another page of today's paper appears the names of the accessory and tractor car exhibitors and a drawing of the positions they will be found in at the Automobile Show. A list of the truck and tractor exhibitors and the number in which they drew their spots is also carried. At the time of going to press no drawing had been made to show the locations that the various exhibits will be found.

AEROPLANE, ARMY TANK AND LIBERTY MOTOR TO BE SHOWN AT THE AUTO SHOW

One of the interesting exhibits at the coming show will be a regular army aeroplane, an army tank and the famous Liberty motor. These exhibits will prove of unusual interest due to the fact that Harrisburgers have been thrilled day after day lately by the army aeroplanes from the Middletown Aviation Camp soaring around overhead. They will be suspended from the ceiling of the big room in which the show will be held. It will be about eight feet from the floor so that it is out of reach of any one who might be

hunting relics and want to take part of it home.

The army tank is the same model as those that were in actual operation on the western front against the Hun. This tank will hold the center of attraction in a space opposite the orchestra and is sure to draw large crowds. A regular army officer will be in charge and will explain its many working points and it is possible that there will be exhibitions on the outside as to just how these demons of war go over trenches through trees and other obstacles as though they were not in evidence.

NASH QUAD



Although the Nash Quad is identified with difficult transportation problems, its economy and efficiency are just as pronounced in ordinary hauling service. Its fame is world wide. In the United States and in twenty-three different foreign countries it is giving excellent satisfaction.

See the Nash line at the show or at our salesrooms.

Myers Motor Sales Company
1210 PENN ST.

STEPHENS Salient Six

DISTINGUISHED by an individuality of style that immediately stamps it the product of expert motor car designers. Lines are lithe and graceful, yet indicative of roominess and comfort.

The Six-Passenger is particularly attractive, seating four, five or six passengers in comfort. While it has ample passenger capacity, it is lightweight which makes for economy in maintenance. Body sides are fashionably low, with deep, soft cushions that incline the body at the proper angle for maximum comfort.

The finish of the car is characterized by the utmost refinement, and the equipment is replete with fittings that satisfy the fastidious. The top is artistic and distinctive in design with beveled plate glass window at the rear. Underneath the double cowl the auxiliary seats fold neatly away. In the right front door compartment is installed a touring kit, complete with brushes, trench mirror, etc., and a complete tool kit is carried in the left front door.

The latest and best in motor car design is yours in the Stephens Salient Six. Let us demonstrate.

J. S. SIBLE, Jr.
DISTRIBUTOR
Third and Cumberland Sts.
Bell 1093

The Right Firestone Tire For Every Truck

No Road Too Rough, No Test Too Tough For Firestone Truck Tire Equipment

YOU will find the right type in the Firestone line for every hauling condition, from heavy duty trucking to fast delivery work, and we have a complete stock.

Let us recommend the truck tire that will give you greatest service at the least cost. Whether you do country or city work, or both; long or short hauls; light or heavy loads; few or frequent stops, will be taken into consideration.

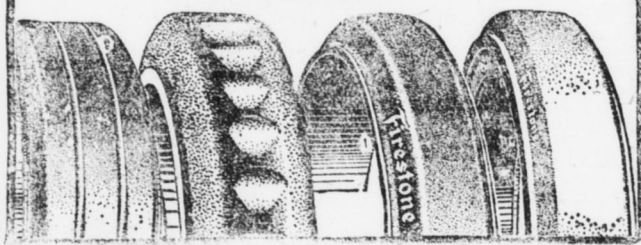
Having no one type of tire to push, our recommendations are unbiased.

Call us. Let us show you how to lengthen the life of your truck, reduce truck and tire repairs, get tire mileage and traction, reduce skidding and spinning, lower gasoline bills.

Our service is unequalled in this city for truck tires and all lines of motoring aids. It pays to consult us.

HARRISBURG AUTOMOBILE CO.

Fourth and Keller Sts.
HARRISBURG, PA.
Both Telephones

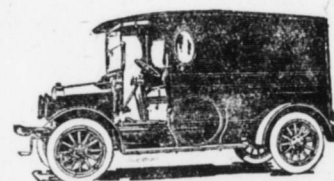
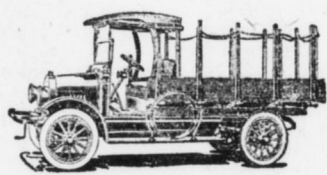
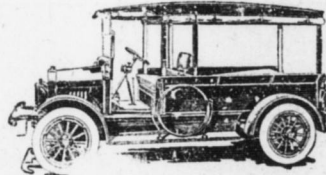


Overland Trucks

Continuous Service and Long Run Economy
Let Us Give You Full Details
The Overland-Harrisburg Co.
212-214 North Second Street

A Vim Truck

means nothing whatever to you in your business life unless that business requires an efficient light delivery truck. Then it means everything to you for it has proven its worth to more than two hundred owners in this territory. It is THE truck for your work.



VIM Trucks do even more than is expected of them. They are economical and efficient — giving perfect satisfaction. They are adaptable to any kind of business. They are fourteen types of bodies. Better see the VIM before deciding on a truck. See a VIM at our office or at the show.

Bell 2133 Dial 4616
THIRD AND REILY STS.
ANDREW REDMOND
DISTRIBUTOR

Superior Qualities Of "Exide" Starting Battery Proven by Thirty-one Years Experience



When you equip your car with an "Exide" you are backing up your starting and lighting with a battery developed by thirty-one years of experience in battery building.

We are battery specialists and repair all makes of batteries but when your battery is worn out we advise an "Exide" because we know its superior qualities.

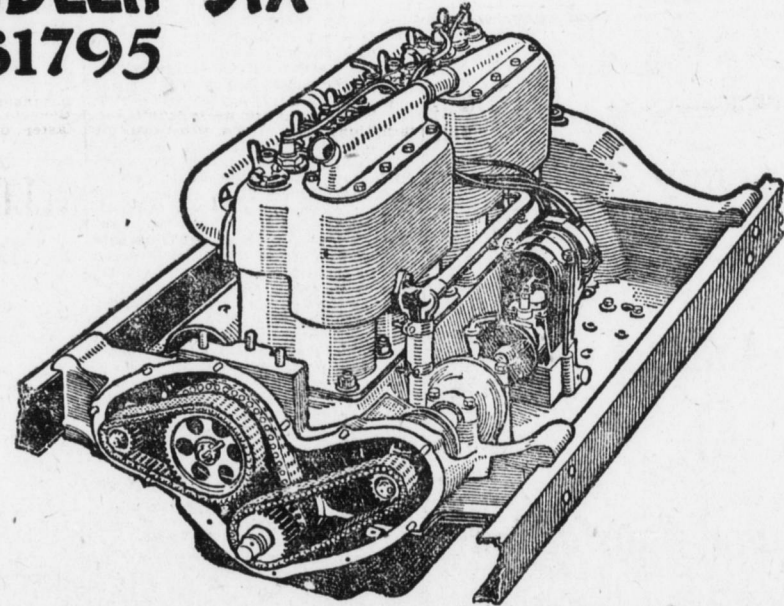
Excelsior Auto & Battery Co.

Eleventh and Mulberry Sts.

Authorized "Exide" Distributor and Battery Service Station



CHANDLER SIX \$1795



This is the Chandler Motor Famous for Its Excellence

CHANDLER owners, and men generally who know automobiles, talk about the Chandler motor for its marvelous performance and endurance.

It is exclusively the Chandler motor, of Chandler design and Chandler manufacture in Chandler shops. The only automobile hood you can find it under is the Chandler hood. It is not a stock motor. No other car has it.

And this is the greatest of six-cylinder motors. The Chandler motor, with refinements and improvements from time to time but without radical change at any time, is now in its sixth year.

Lift the hood of a Chandler car and see that motor. Even from the outside you know it is good. Manufacturers wouldn't build and mount a motor with such care if it weren't an extraordinary motor inside.

Cylinders cast in three, valves in the side, all working parts easily accessible.

Heavy, perfectly-balanced crank shaft, running in unusually large bearings.

Silent chain drive for generator, magneto and cam shafts, three chains running in constant oil spray.

Bosch Magneto for sure ignition.

Mounted on solid cast aluminum base

extending solidly from frame to frame, giving perfect rigidity and saving the motor from the rack and stress of the roadway.

The power so economically produced by the Chandler motor is carried back to the rear wheels with loss by friction brought to its minimum through accuracy of workmanship and the use of annular ball bearings.

Chandler motor and chassis design are typical of the highest priced construction, yet Chandler is moderately priced. It offers greater value than other cars give you for hundreds more. You can absolutely prove this to your own satisfaction if you will come and study the Chandler car.

Seven-Passenger Touring Car, \$1795 Four-Passenger Roadster, \$1795
Four-Passenger Dispatch Car, \$1875
Convertible Sedan, \$2495 Convertible Coupe, \$2395 Limousine, \$3095
All prices f. o. b. Cleveland

ANDREW REDMOND

DISTRIBUTOR
Third and Reily Sts.
Harrisburg

DIAL
4616

CHANDLER MOTOR CAR COMPANY, CLEVELAND, OHIO