

Butterick Patterns
First Floor Rear

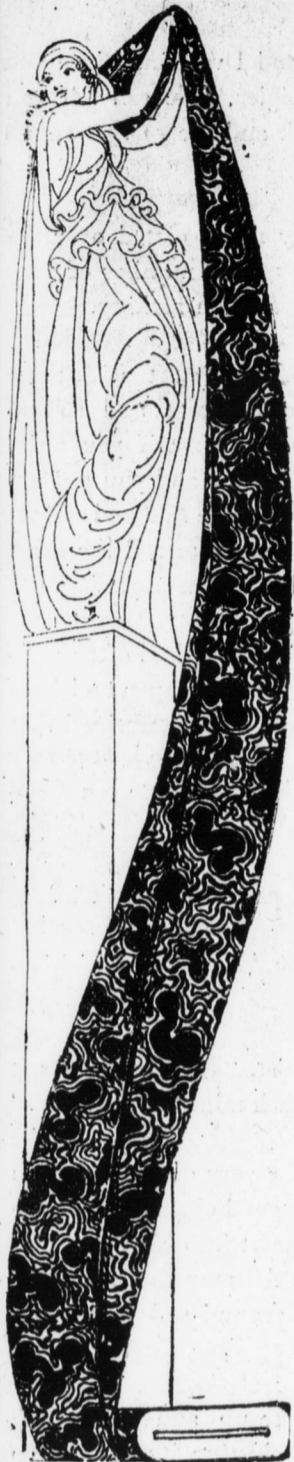
Bowman's

Butterick Patterns
First Floor Rear

U.S. 1901-2356 UNITED

HARRISBURG, WEDNESDAY, FEBRUARY 26, 1919.

FOUNDED 1855



Georgette Crepe
40-inches wide

Every desirable shade—from the very lightest shades to the darkest navy and gray. All pure dyes. A standard quality which we have been selling for years. This georgette launders beautiful.

If we were obliged to duplicate any of these shades we could not possibly sell them for the price at which we are now quoting you. Every one who has bought the material knows it is strong and durable.

\$1.69 yd.



Sale Conditions

On all charge accounts, Silk purchases made on February 27 and 28, will be placed on March bill if so desired.

No mail orders filled at these prices. None sent on approval. None C. O. D. No telephone orders accepted. Purchases limited only when deemed necessary for protection against quantity purchases by dealers.

These conditions are necessary because the silks are sold at the lowest possible margin and the great volume of business that will be done during these three days requires the undivided attention of every competent salesperson at the silk counter.

Announcing our Annual
Bowman Silk Sale

THE biggest event and the greatest offerings of fine silks this progressive house has ever attempted. This annual sale differs from all others, due to Bowman's custom for many years back, of holding a Silk Sale at a time when every woman of Harrisburg and its surroundings for many miles around, appreciates the sale most. Just when it's time to make the garments and frocks for Easter. Think of the grand selections to be had, plus a saving that reminds the purchaser of after-season prices, instead of the very beginning, which ordinarily commands from a quarter to a third more. Past experiences has taught us of the keen appreciation of the women of this city and surroundings.

THIS year above all others our stocks have been made most complete—quantities sufficient that all may avail themselves of these exceptional offerings in Quality Silks.

The choice silks of this sale are selected with the utmost care that experience and good taste can possibly combine. And none but such as are carried in our regular stock at all times. No part lines or discards enter this event of events—nothing undesirable—the cleanest, neatest and daintiest fabrics obtainable. We look to the success of this sale many months ahead and also the satisfaction we are able to create through efficient service. Additional salespeople are here to assure you pleasing service and attention.

Sale Days -- Thursday, Friday, Saturday
February 27th, 28th and March First

Black Silks

- 40-inch satin Pershing; \$2.75 yd.
- 40-inch silk Henrietta; \$3.25 yd.
- 40-inch crepe meteor; \$2.50 yd.
- 40-inch French stripe Grenadine; \$2.95 yd.
- 40-inch crepe de chine; \$1.59 yd.
- 40-inch French Faille Supreme; \$4.15 yd.
- 40-inch satin Radiant; \$2.50 yd.
- 40-inch Pussy Willow; \$3.25 yd.
- 40-inch P. W. Radium; \$2.25 yd.
- 40-inch Pebble back Charmeuse; \$2.95 yd.
- 40-inch satin Sublime; \$3.25 yd.
- 40-inch satin Supreme; \$2.95 yd.
- 36-inch C. J. Bonnet & Cie Satin; \$2.50 and \$2.95 yd.
- 36-inch C. J. Bonnet & Cie Taffeta; \$2.25 and \$2.50 yd.
- 36-inch chiffon taffeta; \$1.69 yd.
- 36-inch satin Messaline; \$1.69 yd.
- 36-inch Satin de Lux; \$1.69 yd.
- 36-inch satin Duchess; \$1.69 yd.
- 36-inch Peau de Soie; \$1.69 yd.
- 36-inch Louisine; \$1.69 yd.
- 36-inch Moire; \$1.69 yd.

BOWMAN'S—Main Floor.

Fancy Silks

- 36-inch—Foundation of chiffon taffeta and Satin de Lux with satin bars, squares and stripes. An endless variety, yd. \$1.69

Twill Foulards

- 36-inch figured—Good variety of designs and colorings. Plenty navy and black grounds, yd. \$1.69

Wash Satin

- 36-inch—Fine, firm, supple and strong quality, specially adapted for fine underwear and waists, yd. \$1.59

Armure Soleil

- 36-inch—A basket weave with highest lustre. One of the season's novelties for skirts. Comes in 6 colors; also white; yd. \$4.39

Pussy Willow

- 40-inch Satin—The satin of excellence for all functions as well as the white for the bridal gown. Six colors in stock; yd. \$3.50

Twill Foulards

- 36 and 40-inch Figured—The finer grades with designs confined to us so they cannot become repeated too often, yd. \$1.89

Crepe de Chine

- 40-inch—A treble thread construction suitable for the finest of garments. 25 colorings, also white and black, yd. \$1.69

Kumsi-Kumsa

- 40-inch—A marvel of beauty and American ingenuity. Crepe ground with big satin stripes, yd. \$6.50

Messaline

- 36-inch—A wide range of the best street colors. Our standard grade in stock which always proved the biggest seller, yd. \$1.69

Shantung Tussah

- 40-inch—Four most desirable shades for suit or dress. Good body, will give lasting wear, yd. \$2.10

Tricolette

- 36-inch—In navy or Copenhagen. Much in demand this season for suit or skirt, yd. \$3.85

Rock-Away-Hunt Pongee

- 36-inch plain colored—Six good colors for suit or dress, yd. \$1.50

English Velveteen

- 27-inch—For the ever so popular jacket. Guaranteed fast pile and fast black, yd. \$2.59

Shanghai Pongee

- 32-inch—Six selected hand-picked shades for better weave and general appearance, yd. \$1.39

Dew Kist

- 40-inch—Plain and changeable weaves, another silk of the hour. Good line of colors; also white, yd. \$4.50

Satin de Lux

- 36-inch—A quality of satin that lends itself to drape rich in appearance. Plain and changeable, full assortment, yd. \$2.25

Chiffon Taffeta

- 36-inch—A quality we pride ourselves of for finish and durability. Big assortment of colors; also black, and white, yd. \$1.69

Cotton Back Satin

- 36-inch—A complete line of colors guaranteed for two seasons, yd. \$1.10

Ottoman and Bengaline Cords

- 42-inch—Big favorite for spring suits or skirts in the principle shade now used, yd. \$2.75

Silk Shirtings

- 32-inch—A superior make in medium dark tone for men's shirts or women's waists, yd. \$1.59

Chinese Shantung

- 32-inch—A desirable quality for dress or suit, even weave. Limited quantity, yd. 65c

Silk and Wool Poplins

- 40-inch—A goodly assortment of the best colorings and a big favorite due to its good wear, yd. \$1.59

Gros de Londre

- 36-inch—Ten best colors. Light or dark. Cotton yarn warp with the appearance of all silk, yd. 79c

Silk Poplins

- 36-inch—Cotton yarn warp, but as lustrous and beautiful as an all silk. Full line of best colors; also white and black, yd. 85c

Rep Cords

- 32-inch—Silk and cotton with colored stripes on white grounds. A truly fascinating fabric, yd. 95c

Mixed Habutine

- 36-inch—Silk of the finest grade. Big line of light and dark colors for dress or underwear, yd. 69c

Foundation Silks

- 36-inch—Silk mixed. Big line of matchable colors. Plenty of white and black, yd. 48c

Silk and Cotton Crepe de Chine

- 36-inch—Always a great favorite for spring and summer wear. All colors, yd. 55c

Brocade Tussah

- 36-inch—Silk and Cotton for suit, dress or lining in best colorings, yd. 79c

Mixed Shirtings

- 32 and 36-inch—Silk or tub silks. Big range of colored stripes on white grounds, yd. 55c

Charmeuse

- 42-inch—Satin face with a wool cashmere back. A silk or a woolen dress at the same time. Five best colors, yd. \$2.75

Crepe de Chine

- 40-inch—A limited quantity of dark shades. Plenty of blue to close, yd. \$1.25

White Silks

- 40-inch crepe de chine; \$1.59 yd.
- 40-inch meteor; \$2.50 yd.
- 40-inch Bridal Satin; \$3.95 yd.
- 40-inch crepe taffeta; \$2.65 yd.
- 40-inch Pershing satin; \$2.75 yd.
- 40-inch Wash Satin; \$1.95 yd.
- 40-inch Satin Sublime; \$3.25 yd.
- 40-inch French Faille Supreme; \$4.15 yd.
- 40-inch Charmeuse; \$1.95 yd.
- 40-inch Satin Radiant; \$2.50 yd.
- 40-inch chiffon tricotine; \$2.65 yd.
- 54-inch Italian silk Jersey; \$3.25 yd.
- 36-inch Wash satin; \$1.59 and \$1.95 yd.
- 32-inch silk broadcloth; \$1.95 and \$2.15 yd.
- 36-inch chiffon taffeta; \$1.69 and \$1.95 yd.
- 36-inch satin messaline; \$1.69 and \$1.95 yd.
- 36-inch Satin America; \$3.25 yd.
- 36-inch Satin de Lux; \$2.25 yd.
- 36-inch China silk; 79c yd.
- 36-inch Satin Georgette; \$3.50 yd.
- 40-inch Armur Sobel; \$4.39 yd.

BOWMAN'S—Main Floor.

Pretty Prints

Figured Ruffanuff

- 40-inch—Another novelty of high merit. White ground with navy or black printings, yd. \$3.50

Crepe de Chine

- 40-inch Printed—Newest and most harmonious colorings and printings for dress or waist; yd. \$2.50

Sport Silks

- 32-inch Printed—Some are heavy silk canvas, others are medium Tussahs; mostly white grounds with figures and stripes, yd. \$1.39

Pussy Willow

- 40-inch Printed—The latest designs shown such as "La Victoire" and other confined patterns, yd. \$3.75

Black Silks

- 36-inch—All plain grounds but selected from our big stock. Ten different weaves and textures, yd. \$1.69

Satin de Chine

- 32-inch—In navy blue only; but the serviceable color that never loses its charm. Quality unmatched, yd. \$1.59

Satin Pershing

- 40-inch—For dress or suit in the best colors of the season. Also in white or black, yd. \$2.85

Crepe Meteor

- 40-inch—A specially selected, grade, in all the good colors; also black and white always proves its worth, yd. \$2.50

Fancy Madarin

- 40-inch—A twill fabric with 3-inch satin square on surface. Four colors in lot; yd. \$4.50

Shantung Tussah

- 40-inch—Four most desirable shades for suit or dress. Good body, will give lasting wear, yd. \$2.10

Tricolette

- 36-inch—In navy or Copenhagen. Much in demand this season for suit or skirt, yd. \$3.85

Rock-Away-Hunt Pongee

- 36-inch plain colored—Six good colors for suit or dress, yd. \$1.50

English Velveteen

- 27-inch—For the ever so popular jacket. Guaranteed fast pile and fast black, yd. \$2.59

Shanghai Pongee

- 32-inch—Six selected hand-picked shades for better weave and general appearance, yd. \$1.39

Dew Kist

- 40-inch—Plain and changeable weaves, another silk of the hour. Good line of colors; also white, yd. \$4.50

Satin de Lux

- 36-inch—A quality of satin that lends itself to drape rich in appearance. Plain and changeable, full assortment, yd. \$2.25

Chiffon Taffeta

- 36-inch—A quality we pride ourselves of for finish and durability. Big assortment of colors; also black, and white, yd. \$1.69

Cotton Back Satin

- 36-inch—A complete line of colors guaranteed for two seasons, yd. \$1.10

Ottoman and Bengaline Cords

- 42-inch—Big favorite for spring suits or skirts in the principle shade now used, yd. \$2.75

Silk Shirtings

- 32-inch—A superior make in medium dark tone for men's shirts or women's waists, yd. \$1.59

Chinese Shantung

- 32-inch—A desirable quality for dress or suit, even weave. Limited quantity, yd. 65c

Silk and Wool Poplins

- 40-inch—A goodly assortment of the best colorings and a big favorite due to its good wear, yd. \$1.59

Gros de Londre

- 36-inch—Ten best colors. Light or dark. Cotton yarn warp with the appearance of all silk, yd. 79c

Silk Poplins

- 36-inch—Cotton yarn warp, but as lustrous and beautiful as an all silk. Full line of best colors; also white and black, yd. 85c

Rep Cords

- 32-inch—Silk and cotton with colored stripes on white grounds. A truly fascinating fabric, yd. 95c

Mixed Habutine

- 36-inch—Silk of the finest grade. Big line of light and dark colors for dress or underwear, yd. 69c

Foundation Silks

- 36-inch—Silk mixed. Big line of matchable colors. Plenty of white and black, yd. 48c

Silk and Cotton Crepe de Chine

- 36-inch—Always a great favorite for spring and summer wear. All colors, yd. 55c

Brocade Tussah

- 36-inch—Silk and Cotton for suit, dress or lining in best colorings, yd. 79c

Mixed Shirtings

- 32 and 36-inch—Silk or tub silks. Big range of colored stripes on white grounds, yd. 55c

Charmeuse

- 42-inch—Satin face with a wool cashmere back. A silk or a woolen dress at the same time. Five best colors, yd. \$2.75

Crepe de Chine

- 40-inch—A limited quantity of dark shades. Plenty of blue to close, yd. \$1.25

Acme Dress Forms

For those who do home sewing the Acme dress form makes it possible to fit your dresses quickly, accurately and pleasantly. The Acme has every possible adjustment that could be wanted in a dress form, so that it can be easily and accurately adjusted to any woman's size, style or figure.

Made in four to twenty-section models, at

\$9.50, \$12.50, \$15.00, \$16.50, \$18.00

BOWMAN'S—Main Floor.

Eldredge Two-Spool Sewing Machine

No bobbins to wind. High grade machine. Fully guaranteed. Sold on Bowman Club Plan.

BOWMAN'S—Fourth Floor.

Bowman's---Main Floor