

Store Closes Regularly
On Saturdays at Six

Bowman's

Store Closes Regularly
On Saturdays at Six

Blankets and Comforts At Clearance Prices

You did not need as many blankets this winter as you did last year. But that is why we can sell them to you now for less than you will most likely be able to buy them for next fall. We have more than we care to carry over. Our gain is your gain.

Cotton bed blankets, in white and gray. Size 55x72. Sale price, \$1.98 pair.
White or tan blankets, large size; 68x80 assorted colored colors; good weight and fleece, \$2.69 pair.
Plaid wool blankets, double bed size in blue and white, pink and white; woven of selected stock, soft and warm; \$7.50 pair.
Single blankets in light and dark gray, 68x84; wool mixed, extra heavy; will make good institution or camping blankets, \$5.00.
Single-bed comfort in light and dark patterns, filled with white cotton, \$2.19.
Double bed size comfort in medium and dark patterns; size 78; covered with silkline and cretonne. Good weight, \$5.00 each.

BOWMAN'S—Second Floor.

Bag Frames and Ribbons

Bag frames in metal and celluloid and Ivory. All shapes and sizes. A very big assortment, 59c to \$2.50 each.
Bag ribbons in a wonderful assortment. Both light and dark combinations. Widths from 5 to 10 inches. We also have the bag frames to match the ribbons; 59c to \$5.00 yard.

BOWMAN'S—Main Floor.

Georgette Crepe

Of every desirable shade. 40 inches wide; \$1.85 to \$2.25 yd.
Printed georgette in beautiful combinations and colorings. 40 inches wide; \$3.00 yd.

BOWMAN'S—Main Floor.

Wool Sweaters, \$3.95, \$5.95

Flannelette Waists, \$1.89

Wool sweaters in coat styles. Large sailor and Tuxedo collars in all shades. Very special, \$3.95 and \$5.95.
Flannelette waist in gray. High, low collars. Tailored styles; specials, \$1.89.

BOWMAN'S—Third Floor.

Special Display of Men's New Neckwear

We are now showing a new collection of cravats for Spring.

Made from rich silks of brocades, satins, faille and twill silks.

The designs are all new; stripes, figures and self effects, and plain colors; made into a shape that makes a neat, perfect knot. These cravats are on display in our side window; excellent value at 75c.

BOWMAN'S—Main Floor.

Take Advantage of Our Greatest

Clearance of Winter Apparel



Warm Flannelette Blankets, Comforts, Coats, Sweaters and Other Cold Weather Wearables.

It doesn't seem like winter unless there is snow on the ground. Although rather belated this season, the present snow storm helps to remind us of the things necessary to keep comfortably clad. At the close of a season you can buy at remarkable reductions, so come to-morrow and avail yourself of this extraordinary opportunity. We may have a solid month of cold weather, and, if not, the savings will be so pronounced that it will pay you to stock up for next winter. One garment here and there doesn't take up much room, but in a large store such as this we must make room for the Spring stocks.



Flannelette Garments That Appeal to Thrifty Women

A fine assortment of flannelette nightgowns, pajamas and skirts would be hard to find. Wise buyers buy this sort of merchandise at the close of a winter season. There are few style changes to worry about. Good serviceable garments of the Bowman quality reduced for quick clearance to avoid summer storage.



White flannelette gown with or without collar in pink and white, blue and white, trimmed with finishing braid; \$1.55.

White, pink and white, blue and white, flannelette gown with or without collar, nicely hemstitched collar and cuffs; \$1.75.

White and colored flannelette gowns with or without collar, finished with hemstitching and braid, \$1.95.

White pajamas of one-piece with nice embroidered frogs, double yoke, \$1.75.

Short flannelette skirt in pink and white, blue and white, gray and white stripes with plain ruffles, 59c.

Short skirt of blue and white; gray and white, pink and white stripes, also plain white with ruffle and plain hemstitched edge; 89c.

Long gray and white, pink and white, gray and black, with plain hemstitched edge and also scalloped edge; \$1.15.

BOWMAN'S—Second Floor.

Children's Flannelettes At Special Reductions

You know with what care mother tucks in her little ones before retiring. Even the larger boys and girls receive solicitous care at bedtime hour. Warm sleeping garments for children are among the first essentials and this is an exceptional opportunity to secure them at exceptional low prices.



Children's flannelette sleeping garments with feet; 2 to 12 years. Drop seat and pockets; pink and blue striped; 75c.

Children's flannelette gowns, in plain white, 2 to 14 years, in pink and white, white and blue striped, without collar, double yoke finished with braid; shelled edge at neck; \$1.00.

Boys' two-piece flannelette pajamas. The coat is trimmed in fancy frogs with band at neck, 4 to 14 years, \$1.10.

Children's flannelette petticoats with muslin bodies. Size 2 to 6 years only. Pink and white, blue and white striped; ruffles with scalloped edge; 39c.

BOWMAN'S—Second Floor.

All Remaining Winter Coats

Arranged in four groups for quick clearance at \$9.95, \$29.50, \$39.50 and the higher-priced ones at Half Price. The prices on many of the first three groups are astonishingly low.

BOWMAN'S—Third Floor.

Women's Union Suits

Cotton ribbed, fleece lined, medium weight, high neck, long sleeves, ankle length.
Perfect fitting union suits; \$2.00 and \$2.25.

BOWMAN'S—Main Floor.

Saturday Dress Fabrics

This department is the equal of those in the larger cities for carefully selected fabrics and for having the newest among the very first on the market. Inspect the new dress fabrics for spring and note carefully these items specially priced for Saturday selling.

Silks—36-inch fancy silks; chiffon taffeta grounds with heavy satin bars. Soft satin Souple with latest multi-colored stripes and checks; \$1.95 yard.

Double width satin Matelasse. Brilliant luster with a basket weave in seven choice colorings for skirts; \$4.95 yd.

40-inch printed crepe de chine. The very newest idea for waist or dress. 6 new combinations; Saturday only, \$2.50 yd.

Fine Cotton Fabrics—40-inch figured stripe or checked voiles in a mammoth selection of colorings. Light and dark; 45c and 55c yd.

32-inch Foreign and Domestic Zephyr ginghams. Over 200 styles to choose from, 59c yd.

32 and 36-inch shirting crepes and Tussah cloth with silk stripes; 59c yd.

Woolens—54-inch Jerseys of the finest make on the American market. 10 of the latest shades; \$4.95 yd.

50-inch French twill serge. Full line of colors and black; \$2.95 yd.

BOWMAN'S—Main Floor.

Basement Specials For Saturday

OIL STOVE—large oil tank, quick, good heat; \$5.25.
BERRY BOWLS—Colonial glass; 9 inches, 45c; 8 inches, 35c.

LEMONADE SET—pitcher and six tumblers, made of canary colored glass; \$1.50.

DINNER SET—100 pieces American porcelain. Rich border decoration; \$30.00.

TABLE LAMP—nickel plated Rayo lamp with center draft burner and 10-inch opal shade, \$3.98.

CUSPIDOR—made of brass, self righting; \$1.75.

SCRAP BASKET—made of fancy straw; 98c.

CARPET BEATER—made strongly of rattan; 40c.

MARKET BASKET—made of willow; 98c.

COPPER WASH BOILER—made of heavy gauge copper; No. 8, \$7.50; No. 7, \$6.50.

FOOT TUB—good size, white Japanned; 98c.

BOWMAN'S—Basement.

Snow Shovels

Metal Snow Shovels, 14 in. wide, with D-handle, 98c; with 18-inch blade, \$1.25.

LIGHTNING GUIDER SLEDS

32 inches long, \$1.35 34 inches long, \$1.60
36 inches long, \$1.80 47 inches long, \$2.75
52 inches long, \$3.25. All extra special.

BOWMAN'S—Basement.

Her Coiffure Merveilleuse!



"Such a becoming Headdress! The very latest Mode—So smart and distinctive too! She must have very luxuriant tresses and a French maid to arrange them."

No, my dear, her hair is extremely thin and scanty and she dresses it herself—\$5.00 for one of our BEAUTIFUL WAVY SWITCHES will enable you to do likewise. Our experts will gladly show you without extra charge.

BOWMAN'S—Third Floor.



NEW HATS FOR SPRING

That Will Win Your Admiration

The charming simplicity of these new spring hats is one of their best assets. They are simple but not plain, and some of course, are more elaborate than others, but all are very lovely and becoming styles from which any woman can find a satisfactory hat. They are

Specially Priced at

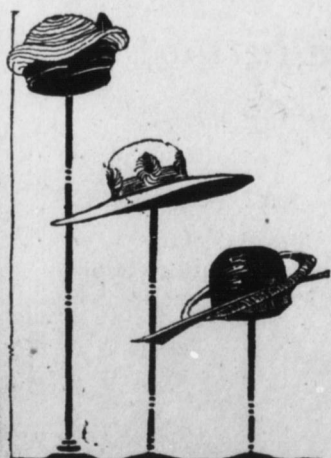
\$5 \$6.50

\$7.50 & \$10

Smart Braided Sailors

\$3.95, \$4.95, \$5.95

BOWMAN'S—Third Floor.



Six More Days of the

February Furniture Sale

The last days of the sale are frequently the best. Those who are undecided and have deferred buying furniture make their decision in the final week of sale. Those who have seen the splendid assortment on Fifth Floor usually come back and select. Those who have not seen our quality and special prices will be delightfully surprised.

Furniture for every room in the house is included—complete sets and separate pieces, in every wood and finish, and in the most elegant designs. The following items are typical of the savings you can now affect on fine furniture:

A solid Mahogany Cane Rocker, Fireside style, finished in antique mahogany. A very attractive, well-built rocker or chair. February Sale Price, \$11.75 each.

A large size Overstuffed Tapestry Davenport, with loose pillows seat and full spring back. An exceptional value. February Sale Price, \$69.00.

A nine-piece Jacobean Oak Dining Suite, consisting of Buffet, Square China Closet, Extension Table, five Dining Chairs and Large Arm Chair; Queen Ann period. February Sale Price, \$139.00.

A four-piece Satin Gum Bedroom Suite, including Dresser, Chiffonette, Dressing Table and full size bed. February Sale Price, \$89.00.

A deposit will hold any purchase for later delivery. All goods purchased in February Furniture Sale will be stored up to ninety days, free. All furniture delivered auto truck or freight charges prepaid to distant points.

The Bowman Club Plan gives you the privilege of buying furniture in the February Sale and extending payments over a period of months.

Fifth Floor For Fine Furniture

