

Store Closes Regularly
On Saturdays at Six

Bowman's

Store Closes Regularly
On Saturdays at Six

BELL 1901-2356 UNITED

HARRISBURG, TUESDAY, DECEMBER 17, 1918.

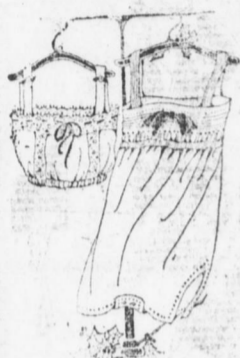
FOUNDED 1871

The "Eleventh Hour" Shopper Is Doomed to Disappointment

Therefore we advise you to finish up your Christmas shopping NOW while stocks are still complete and we are still able to give you prompt and satisfactory service. For your own sake as well as for those who are here to serve you, we urge you to complete your Christmas shopping just as soon as you possibly can.

ONLY SIX MORE SHOPPING DAYS
UNTIL CHRISTMAS

An Elaborate Display of Dainty Undermuslins



A vast assemblage of these dainty little creations now courts your attention. Nightgowns, petticoats, bloomers, drawers, corset covers, envelope chemise in nainsook and batiste and white aprons.

They are displayed in a wonderful variety of pretty styles, and a diversity of beautiful trimmings of novel designs. Seamed and stitched in a manner to win your admiration. We extend a cordial invitation to come and view them. These prices will show you how economically they can be secured:

Nightgowns in flesh and white batiste, \$1.50 to \$6.98.
Petticoats of fine muslin, 75c. to \$2.98.
Bloomers in crepe or batiste, 75c. to \$1.39.
Drawers in muslin, 59c. to \$2.98.
Corset covers in batiste, 29c. to \$2.98.
Envelope chemise in flesh and white batiste, \$1.00 to \$4.98.
Aprons, 29c. to \$2.98.

BOWMAN'S—Second Floor.

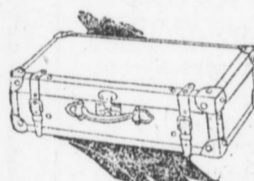
Bowman's Annex

Gilbert Building—Opposite Courthouse

Having acquired the excellent stock of holiday novelties from Henry Gilbert & Son, we are selling this stock at prices remarkably low, because the goods were purchased long before the war began. This is not only an assurance of the low prices, but it is an assurance of the finest materials and artistic workmanship possible when the world's finest artisans were following their respective vocations.

Toys of every conceivable kind are also here. Visit Bowman's Annex. Innumerable suggestions.

Dependable Luggage



You have probably wanted a good traveling bag, suit case, or trunk for a long time. All of our bags are of fine grade leather made of almost every conceivable kind. Why not avail yourself of the opportunity now when such a fine assortment is here to be chosen from, or better yet, why not give some one who is in need of it, one of the above mentioned for a gift. Always useful for each and every individual on different occasions.

Black traveling bag made of genuine cowhide, brass lock and catches, and rich fabric lined, \$6.00.

Leather suit case—24-inch size—good lock and catches inside straps and shirt pocket, \$8.00.

Fiber Steamer Trunks—brass trimmed made to stand hard knocks, \$17.00 to \$27.50.

BOWMAN'S—Basement.

Special Offering of

Satin Finished Bedspread

A useful and desirable Christmas gift. Hemmed satin finished; full double bed size; in attractive patterns. Wednesday only, each, \$3.98.

BOWMAN'S—Second Floor.

Gray Hair Goods



A gift that mother would appreciate. Bring samples we will match it perfectly. "Switches" and transformation. Fine wavy switches, \$2.95 to \$30.00.

Transformations, \$2.45 to \$15.

BOWMAN'S—Third Floor.

Notions

Frill elastic in blue and lavender, 1 1/4 inches wide, yard, 50c.
Silk diaper shields, 85c.
Assorted embroidering scissors, \$1.25.

BOWMAN'S—Main Floor.

Did You Ever Visit Bowman's Basement? You Will Find It a Very Interesting Place to Seek Gift Suggestions

An entire floor, the full length of the store, devoted to the display of thousands of articles that would be appropriate and pleasing as gifts. Useful gifts as well as ornamental.



As you stroll through the housefurnishing section you will note the moderate priced copper chafing dishes, mahogany nut bowls, casseroles and other items too numerous to mention.

To the south, the China Department with its vast array of dinner sets, ranging from \$8.50 to \$150.00. We might add, the way they are selling the values are big.

One entire side of the china department is devoted to rich, sparkling cut glass, among which are flower vases, punch bowls, finger bowls, water sets, vinegar and oil cruets, celery trays. Any piece which would look in its place in the crystal closet or on the festive table.

And one section adjoining is devoted to a showing of beautiful lamps in various sizes and designs. Metal lamps with Venetian glass panel shades. Boudoir lamps with mahogany stands and silk shades, and other pretty designs that give a touch of "homeiness" to the room.

To the north of the basement is Harrisburg's well known toy department filled to overflowing and continually being replenished from our warehouse with toys that Santa likes to give. And, of course, Santa Claus has his headquarters at this store. Children like to meet him on the second floor front.

Everything that a boy or girl might wish for are shown here at moderate prices. Express wagons, \$3.65 to \$10.00. Lightning guiders, \$1.25 to \$3.50. Games of every description amusing and instructive, too varied to quote.

Books for the young child, 10c. to Chatterbox, \$1.25, and Pollyanna at \$1.50. Dolls, one of the strongest sections of the toy department. Dolls we had given up hopes of receiving are here. Classy, jointed dolls, undressed, \$4.98. Dressed ones up to \$20.00.

War toys of every conceivable kind—rapid fire guns, machine guns, regiments of lead soldiers with tents and numerous others.

And in our luggage department here are traveling bags, suit cases and trunks of the dependable kind. Perhaps you have some one in mind who would appreciate good luggage.

VISIT BOWMAN'S BASEMENT



Winter Suits at Lowest Prices

Our entire stock of Fall and Winter Suits are reduced for clearance. We quote for your special consideration tomorrow, two lots at \$25 and \$19.50, that offers unusual values at these prices.



Just 60 Suits in This Lot

These are all the latest all wool materials, such as Wool Velours, Broad Cloth, Serges, Velvets and mixtures. Tailored and semi-tailored models. Braid, button and fur-trimmed in all the leading shades. 15 to 19 and 16 to 48.

Remarkable Reductions at \$25

Another Lot of 35 Suits

In all wool materials in green, brown, burgundy, mixtures, navy, taupe and black. 16 to 44.

Very Special at \$19.50

BOWMAN'S—Third Floor.



Special Values In Wash Fabrics

On the final stretch when everybody's mind is absorbed what to procure as an added or good measure present, the following materials will fill the anticipated joy of the giver to the recipient, and at a good saving:

The size of the lot offers an excellent variety.
32-inch American dress-ginghams, yd., 39c.
32-inch foreign and domestic gingham zephyrs, yd., 69c.
36-inch finest American percales, yd., 39c.
32 and 36-inch silk and cotton shirtings, yd., 69c.
36-inch eiderdown, fancy prints, yd., 32c.
36-inch silk and cotton crepe de chine, yd., 59c.
36-inch silk and cotton plaids, yd., 69c.
30 and 32-inch fancy kimono crepe—figured and striped, yd., 39c.
36-inch Irish made linen, yd., 95c.
44-inch plain voiles, all colors, yd., 39c.

BOWMAN'S—Main Floor.

Umbrellas In New Styles With Pretty Handles

Umbrellas are needed as much in the month of December as any other month of the year, and in recognition of their popularity as gifts, the stocks of our umbrellas are of the best, and the handles of the latest.

Children's umbrellas with ebony, silver tip, crooked and straight handles, \$1.95 to \$2.45.

The fashionable new tip umbrellas, cord, ring, straight and fancy handles in all shades of silk, \$1.95 to \$9.50.



BOWMAN'S—Main Floor.

Axminster Rugs

AXMINSTER RUGS are always desirable and acceptable for gifts because they enhance the beauty of the home.

22 1/2 x 36 inches, \$1.75.
27 x 54 inches, \$3.50, \$4 and \$4.50.
36 x 72 inches, at \$6.50, \$7.50 and \$9.

VELVET RUGS—in floral and all over patterns:
24 x 48 inches, \$3.00.
27 x 54 inches, \$3.50, \$4.50 and \$5.50.
18 x 36 inches, \$1.35.
36 x 72 inches, \$4.50 to \$9.00.

BOWMAN'S—Fourth Floor.

Waist Department Offers Many Special Values

Knitted spencers with or without sleeves. Will keep you warm and comfortable when worn with coat, suit or under heavy coat.

Special—with sleeves, \$2.15. Sleeveless, \$1.25. All wool serge and flannel regulation middies. Collars and cuffs trimmed with white braid. Sleeves have emblem and red band. This will be a useful and practical gift for the school girl. Serge, \$5.95. Flannel, \$8.95.

Georgette crepe waist in many attractive shades and styles of the season. Some with large collar, lace and embroidery trimmed. Others have shawl collars, fine tucks, round or square necks. Special, \$3.95.

Crepe de chine waists in white and flesh. Some with high necks, others have large collar and fine tucks. Special, \$3.95.

BOWMAN'S—Third Floor.

Unusually Pretty Gift Neckwear

A sample lot of neckwear—collar and cuff sets, vests, of georgette, organdie, satin. Original creations which make for personal expression and accentuated individuality. Christmas neckwear of the most desired styles. 50c and \$1.00.



BOWMAN'S—Main Floor.

Bandeau Brassiere

The bandeau brassiere still retains its popularity for wear. They keep their finish in the soft texture of satin, Jersey, crepe de chine, lace and satin combinations, all over cluny lace and brocade. These are light, well fitting and daintily made, in front and back closing.

Any woman would be pleased to accept a bandeau brassiere for a gift for Christmas. Boxed free of charge in nice box, \$1.00 to \$2.00.

BOWMAN'S—Second Floor.

Not Open Any Evenings Before Christmas