

Store Closes Regularly  
On Saturdays at Six

# Bowman's

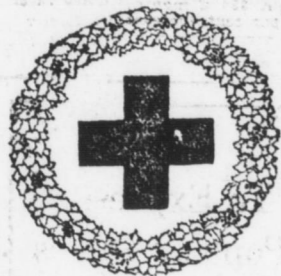
Store Closes Regularly  
On Saturdays at Six

BELL 1901-2550 UNITED

HARRISBURG, MONDAY, DECEMBER 16, 1918.

FOUNDED 1874

## December 16th to 23rd



Is Christmas Universal  
Rollcall of the American  
Red Cross.

Every American should  
be enrolled as a supporter  
of the great Army of  
Mercy.

The 1918 memberships  
expire December 31, so  
old members and new  
should enroll this week.

\$1 pays for a year's membership, and a button and flag  
are given to each new member.

## Carpet Sweepers Make an Ideal Gift



A Bissell Sweeper is sold  
with an absolute assurance  
that it will be satisfactory.  
Prices range from \$2.50 to  
\$7.50.

Hand Vacuum Cleaners

And sweepers, combined, at  
\$6.75 to \$10.25.

BOWMAN'S—Fourth Floor.

## For The Boudoir---A Set Of The Royal Dainter Duster

The set consists of large and one small duster. They are  
chemically treated to absorb dust, clean and polish. They  
come in assorted colors, with a cretonne bag.

We have many more dainty things for the boudoir—pretty  
enameled baskets and trays, scarfs, silk pillows, waste bas-  
kets, window wedges, and many other pretty and useful  
things.

For the dining room—beautiful covers in filet, cluny, em-  
broidered; also a good selection of blue prints. A very clever  
knife and bread board to match—for table use. Beautiful  
bon bon boxes, hand-painted fruit baskets and trays.

BOWMAN'S—Second Floor.

## Embroidered Pillow Cases And Sheets

Embroidered scalloped pillow cases, 45x36; made of  
best quality tubing; five different patterns to select from,  
all nicely put up in holly boxes, \$1.60 a set.

Bolster to match.

Embroidered, scalloped and hemstitch pillow cases,  
made of best quality muslin; neatly boxed; pair, \$2.25  
to \$2.89.

Bed sets; include one sheet and two pillow cases in  
embroidery and hemstitching; plain hemstitched and em-  
broidered scalloped; set \$3.75 to \$6.50.

BOWMAN'S—Second Floor.



Fine Velvet

## Hand Bags---Special \$5.95

Greater values by far than the price indicates. And they  
certainly are beauties. Rich fabrics with the high color  
notes, and high glittering beaded-effects so much admired  
today by women of fashion everywhere. Soft, fine velvets,  
beautiful silks and rich brocades. Carved wood frames, self-  
covered frames, metal frames, Aztec frames beaded in re-  
markably artistic designs, with a profusion of beads, rich in  
colors. A variety of different handles in shiny chains or soft  
ribbons of silk or velvet. And tassels of silk, chenille and  
beads.

Every desired shape from the little club styles to the large  
gaily-lined wonders that some may call service bags.

Any style in this lot, \$5.95 to \$9.50, which is some special  
price, made possible by a fortunate purchase, representing  
part of a manufacturer's clearance. A gift of unusual richness.

BOWMAN'S—Main Floor.

# Thousands of Beautiful Silk Shirts and Ties

## Will Be Bought By Women For Men's Christmas Gifts

The stage comedian loves to repeat the old joke about  
Husband being obliged to smoke Wifey's cigars after  
Christmas. Well, perhaps women are not the best judges  
of what men should smoke, but they are the best judges  
of silks, and that is why men should be glad to have the  
women select the silk shirts and silk ties. Ninety per cent.  
of our men's furnishings are sold to women, and as we  
have anticipated an exceptional demand this year for  
Christmas selling, our Men's Furnishings Department has  
a larger and finer assortment than any preceding Christ-  
mas season.

Silk Shirts in the season's best colors and patterns—Salis-  
bury, York and Manhattan brands. Beautiful patterns of silk,  
and wool; silk fiber, crepe de chine and broadcloth silk, at \$4.50  
to \$10.98.

Men's Silk Ties in thousands of beautiful patterns. New  
liberal sizes in fashionable shapes. Reinforced neckband, which  
is very desirable, because no matter how rich a scarf it is a nuis-  
ance-if it becomes severed or loose, 50c to \$2.00.

## Many Other Suggestions In Men's Wear For Christmas Giving

Men's four-in-hand Ties, wide open  
ends; colors are beautiful, 50c to \$2.00.

Men's Dress Gloves, in cape and  
mocha; lined and unlined; plain and  
black attaching, \$2.00 to \$3.75.

Men's and Boys' Woolen Gloves, 50c  
to \$1.50.

Men's Silk Gloves, in taupe, gray,  
white, brown and black, 60c and \$1.00.

Men's Auto Gloves, lined and un-  
lined, \$2.00 to \$3.50.

Men's Hosiery, in cotton, lisle, silk  
lisle and silk wool, 29c to \$3.00.

Men's Linen Collars, 35c and 50c.

Men's Initial Handkerchiefs, 12 1/2c  
and 25c.

Men's plain hemstitched Handker-  
chiefs, 15c to 25c.

Men's plain hemstitched Handker-  
chiefs, in linen, 35c to 50c.

Men's Silk Handkerchiefs, 35c

Men's plain Silk Handkerchiefs, \$1.00  
to \$1.50.

Gem Razors, set complete, \$1.00.

Gem Razor Blades, pack, 35c.

Sharpen M All Razor Stoppers, \$1.00

Men's Belts, boxed, 59c to \$2.00.

Men's Initial Belt Buckles, 50c

Men's plain and fancy Belt Buckles,  
50c to \$2.00.

Men's Scarfs, in wool, mercerized,  
silk and silk lisle, 59c to \$6.50.

BOWMAN'S—Main Floor.

Men's Suspenders, boxed, 59c to \$1.50.

Men's Brighton and Paris Garters, in  
lisle and silk webbing, 35c and 50c.

Men's Flannel Shirts, in khaki, gray  
and Navy blue, \$2.00 to \$7.00.

Men's Dress Shirts in Madras; soft  
and starched cuffs, \$1.50 and \$2.00.

Men's Dress Shirts, in silk, fiber silk,  
crepe and silk and wool, \$4.50 to \$9.50.

Manhattan Shirts, \$2.00 to \$4.00.

Men's Bath Robes, \$7.50 to \$15.

Men's Outing Flannel Pajamas, \$2.00  
to \$3.00.

Men's Sleeping Pajamas, with hood,  
\$2.00 and \$3.50.

Men's heavy cotton ribbed Union  
Suits, \$2.00 and \$2.50.

Men's Musling Union Suits, cotton  
ribbed, \$2.50.

Men's heavy cotton Shirts and Draw-  
ers, \$1.25 and \$1.50.

Men's Collins wool Shirts and Draw-  
ers, \$2.75 each.

Boys' Sweaters, \$1.98 to \$3.98.

Boys' heavy wool slip-on Sweaters,  
with shawl collar and V neck, \$7.50  
and \$9.50.

Men's Cardigan Jackets, in gray and  
black, \$5.00 and \$6.50.

Men's slip-on Sweaters, with shawl  
collar and V neck, \$4.98 to \$10.50.

BOWMAN'S—Main Floor.

# These Bargains In Dresses

## Won't Hold Out Much Longer!

Scores of women have availed themselves of the remarkable low prices for which we are now offering our stocks of Winter dresses. Every woman who has not already done so, should take advantage of this sale and the bargains it offers. We are reducing Winter stocks—hence these prices.

### 85 Dresses at \$24.75

One lot of 85 dresses for afternoon,  
street and semi-evening wear. These  
are in beaded georgettes with fancy and  
braided trimmings, satin, wool vel-  
ours, serges and jerseys, all the latest  
most desirable shades; sizes, 16 to 44.  
Choice of lot, \$24.75.

### 110 Dresses at \$19.50

Another lot of 110 dresses for after-  
noon and street wear. These are all the  
latest models. Materials are velveteens,  
satins, serges, and jerseys. Colors are  
taupe, reindeer, burgundy, brown, Copen  
terra cotta, Navy and black. Choice of  
lot, \$19.50.

BOWMAN'S—Third Floor.



## Will Be Sold For Benefit Of Red Cross

A Hudson Seal Coat with mole collar and cuffs which  
was donated to the Red Cross will be sold to highest  
bidder, all proceeds from sale will go to Red Cross. Coat  
may be seen in our window, and sealed bids will be re-  
ceived in Fur Department on Third Floor, where com-  
plete information may be had.

## Exquisite Is Permissible In Describing These Silks

Silks with trade marks that appeal to  
the imagination as a fabric of grandeur—  
and truly they are. They possess the  
fine texture and brilliance that place  
them as the leaders of fashions, at the  
same time giving the assurance of good  
wear and resistance.



- 36-inch Satin America in white, navy and black; yard, \$3.00.
- 40-inch Satin Pershing in white, navy and black; yard, \$3.50.
- 36-inch Jersey Satin, line of colors; yard, \$3.75.
- 40-inch Crepe Tricotine; yard, \$3.00.
- 40-inch Taffeta Crepe, yard, \$3.00.
- 40-inch Crepe Meteor, in colors and black; yard, \$3.00.
- 40-inch Crepe de Chine; yard, \$1.59, \$2.00 and \$3.00.
- 36-inch Satin Majestic in colors and black; yard, \$2.25.
- 36-inch Satin de Luxe, in colors and black; yard, \$2.50.
- 36-inch Chiffon Taffeta, yard, \$1.69 to \$2.50.
- 36-inch Satin Messaline, yard, \$1.59 to \$2.00.
- 36-inch Fancy Plaids and Stripes; yard, \$1.59 to \$3.00.
- 36 to 40-inch Wash Satins, in white and flesh color; yard,  
\$1.85 to \$3.00.

BOWMAN'S—Main Floor.

## Knit Underwear For Yourself and Others

Excellent Christmas gifts for the "home folks" to  
make each other. And for yourself, too, here are just  
the right weights and sizes. Every garment is correctly  
shaped and knitted so that perfect, comfortable fit is  
assured. Prices are quite reasonable.

Women's vests and pants, regular sizes, \$1.00; extra  
sizes, \$1.25.

Women's union suits, white fleece lined, \$2.00 and  
\$2.25.

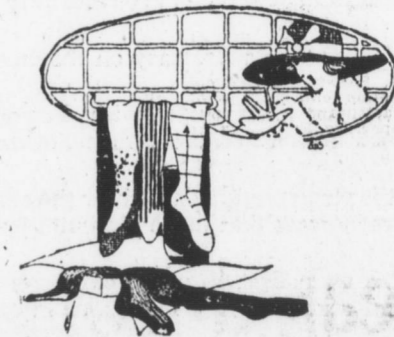
Women's union suits, part wool—H. N. L. S.—regular  
sizes only, \$2.50 each.

Children's cotton union suits, all sizes, \$1.25 and \$1.50.

Children's vests and drawers, 59c each.

Children's part wool union suits, \$1.75 to \$3.00.

BOWMAN'S—Main Floor.



## Hosiery of the Satisfying Kind Specially Priced

The care in selecting, the moderate price for dependable  
merchandise, and the magnificent assortment we offer our  
customers are features that are responsible for the growth  
of what is considered one of the finest Hosiery counters.

Two specials for tomorrow offer values that are unusual,  
coming as they do just at a time when Silk Hosiery is in such  
demand for immediate service and for gifts.

Women's thread silk stockings with wide garter tops, high  
spliced heels; in black, white, dark gray, light gray, cham-  
pagne, brown, some gold and light blue. Special, \$1.15.

Women's thread silk boot hose with double heels and toes;  
elastic tops. Come in white, black, brown, champagne, beige,  
pink, blue, light and dark gray. Special, 85c.

These prices are much cheaper than you will be able to  
buy them for in the near future.

BOWMAN'S—Main Floor.

Not Open Any Evenings Before Christmas