

GERMANS BEGIN NEW AVENUE OF EXIT FROM WAR

French Troops Pursue Rear Guards From Achery to Anguicourt
FIGHT NEAR GRAND PRE
Near Vouziers Foch Soldiers Cross Aisne River in the Argonne Region

Paris, Oct. 18.—The Germans have begun a new retirement movement in the area between the Oise and Serre rivers, between Laon and Cambrai, according to the official statement from the war office today.
French troops advancing from Achery and Choigny are in pursuit of the German rear guards, Anguicourt has been occupied by the French.
In the Argonne region the French have crossed the Aisne near Vouziers. Fighting continues in the area west of Grand Pre.



BELLANS FOR INDIGESTION
6 BELLANS Hot water Sure Relief



STERN'S CUT RATE SHOES
209 WALNUT ST.
You Shouldn't Ponder Long Over Shoe Values Like We Are Offering FOR THIS WEEK

The early buyer will profit as usual, by being sure of his size and a more complete assortment of styles. If you are interested in a pair of shoes now, HURRY.



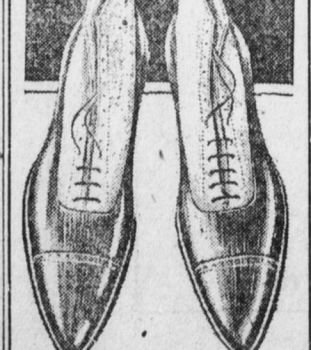
\$4.95
Growing Girls' High-Cut Tan Calf English Boots. As Illustrated



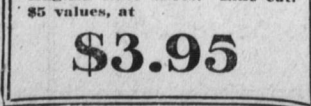
\$3.95
Ladies' Dull Cut Lace Shoes, Medium Short Vamps. As Illustrated. \$5 Values.



\$2.45
Boys' Black or Tan Elk-skin Scout Shoes. Solid Oak Soles. Up to size 6



\$1.98
Smaller Sizes.



\$3.95
Boys' Splendid Black Calf English Lace Shoes. Like cut. \$5 values, at

SEEK MOTIVE IN THE MURDER OF GETTYSBURG MAN

Left Home in Automobile With Unrecognized Man and Woman

Complete mystery continues to cloud the motives and identity of the murderer of George J. Bushman, well-to-do garage owner of Gettysburg, whose body was found along the river road at Lucknow with a bullet wound in the back of the head and in the left breast yesterday morning.
City police and County Detective Walters are conducting an investigation here, while Charles Wilson, county detective at Gettysburg, is investigating the affair from that place.

Charles Plank, brother-in-law of Bushman, was in the city last night. He told the authorities that Bushman rode away from Gettysburg Wednesday night in a large touring car with a man and woman, whose identity Plank did not know. That was the last seen of him until G. H. Eisenhower, and B. F. Neine, of Dauphin, found the body along the river bank, about a quarter of a mile north of the old County Club lane. The body was covered with an automobile robe.

Robbery Not Motive
Robbery is not considered the motive of the crime. Twenty-five dollars, papers, letters, receipts, and a promissory note which had not been negotiated, were among the personal effects found in his pockets.
A slight clue to the identity of the murderer or murderers came to light yesterday when Steven Gruber, who lives about a hundred yards from the place where the body was found, declared that he was awakened Wednesday night by the noise of automobiles. When he got up to investigate, he saw two machines standing along the road. He did not see anyone moving about, he said.
George J. Bushman, aged 57, was the son of Lewis Bushman, president of the Gettysburg bank. He is survived by his wife, a son, Clarence, now in the army, and a daughter, Mrs. C. R. Holder, of Texas. Bushman conducted an auto transfer business in Gettysburg, and was widely known there.

Gasless Sunday Ban Lifted; 1,000,000 Barrels Saved

Washington, Oct. 18.—Fuel Administrator Garfield yesterday lifted the ban on "gasolineless" Sundays, effective at once.

Should gasoline stocks again fall dangerously low, it was stated at the fuel administration, the request will be renewed. It is probable that priority orders will begin for shipment of gasoline overseas.

In announcing the withdrawal of the request, the fuel administrator said through the loyal response of the public, 1,000,000 barrels of gasoline was saved for the military forces.
The stocks of gasoline east of California, it was stated, have not materially increased or decreased. On October 14, the stocks were 3,134,731 barrels of motor gasoline and 166,369 barrels of aviation gasoline. This represents the entire reserve and is not available for export, as it is stored in territory as far west as Wyoming and includes storage in various interior oil-producing localities.

The peak load of domestic consumption is passing, in the belief of the oil division of the fuel administration, and it is hoped that overseas shipments will not be quite so heavy. Through a priority order giving preference at refineries to shipments for overseas, prompt supplies for Europe will be assured and if any shortage exists, it will be domestic.

The fuel administration, it is stated, now is considering the question of conservation, with a view of determining what further measures, if any, will be needed.

Standing of the Crews

- HARRISBURG SIDE**
Philadelphia Division—The 115 crew first to go after 2 o'clock: 131, 101, 139, 116, 123, 105, 18, 109.
Fireman for 115.
Brakemen for 115, 131 (2), 130, 123, 105, 118.
Fireman up: Sheesoff, McLaughlin.
Brakemen up: Funston, Hall, Holtenbaugh, Smith.
Middle Division—The 36 crew first to go after 2:45 o'clock: 20, 228, 305, 35, 30, 214, 224, 22, 23.
Engineers for 30, 35, 30.
Fireman for 36.
Conductor for 35.
Flagmen for 36, 123.
Brakemen for 228, 30, 123.
Engineers up: Sweigart, Rathfon, Sheeley, Baker.
Firemen up: Hoover, Haskins, Ush, Swartz, Book, Weaver, McLaughlin.
Conductor up: Lower.
Brakemen up: Bonsell, Kreps, Steininger.
Yard Board—Engineers for 1C, 3-7C, 4-7C, 5-7C, 11C, 1-14C, 2-14C, 4-15C, 5-15C, 6-15C, 32C.
Fireman for 12C, 12C, 1-14C, 5-15C, 6-15C, 15C, 17C, 23C.
Engineers up: Fry, Dougherty, Eyde, Nye, Ush, Bostdorf, Lackey.
Firemen up: Burns, Hoffman, Reber, Chubb, Fnesick, Hampton, Bolan.
- ENOLA SIDE**
Philadelphia Division—The 234 crew first to go after 3:45 o'clock: 233, 225, 251.
Engineer for 211.
Firemen for 234, 211.
Middle Division—The 234 crew first to go after 2:45 o'clock: 105, 118.
Engineer for 118.
Fireman for 118.
Flagman for 118.
Brakeman for 105.
Yard Board—Engineers for 2d 126, 1st 129, 2d 129, 4th 129, 2d 132, 135, 118.
Firemen for 145, 2d 126, 3d 126, 3d 118, at 129, 1st 30, 2d 102, 2d 104, 212.
Engineers up: Liddick, Barnhart, Beckhart, Brown, Huggins, Hanlen, Smith, E. P. Brown, Book, Quigley, Fenical.
Firemen up: Wendt, Sanders, Ready, Lightner, Kretzer, Stoll, McCon, Hopper, Koch, Frank.
- PASSENGER SERVICE**
Philadelphia Division—Engineers up: Gillums, Hall, Osmond, Gibbons, Pleam.
Firemen up: Copeland, Shaffner, Bleich, Floyd.
Middle Division—Engineers up: Keiser, Crum, Miller, Graham, Keane, Riley.
Firemen up: Ort, Keltner, Fletcher, Snyder, Kerber, Mellinger, Hoffman, Swab, Colyer.

PEACE STOCKS RISE IN N. Y.

500,000 Shares in First Hour in Wall Street; Prices Rise

By Associated Press
New York, Oct. 18.—Notwithstanding official warnings from Washington that the war is not yet over, the boom in peace stocks which began early in the week, to-day assumed broad proportions. In point of activity and scope the movement rivaled the many war sessions of the Stock Exchange in 1915 and 1916.
Sales during the first hour aggregated 500,000 shares or on the basis of over 2,500,000 shares for the day. Advances in those stocks which, it is considered would benefit by declaration of peace, ranged from two to ten points. The public as well as professional interests were buyers.
Oils were the chief beneficiaries, mounting to next maximums at advances of 2 to 10 points, with metals next in favor, recorded gains of 1 to 3 points. Rails moved upward one to three points.
United States Steel gained 1 1/2 points at the start, later forfeited most of it and again moved upward, ends in the war group, Bethlehem and Crucible Steels and Baldwin Locomotive yielded 1 to 2 points.

ity and scope the movement rivaled the many war sessions of the Stock Exchange in 1915 and 1916.
Sales during the first hour aggregated 500,000 shares or on the basis of over 2,500,000 shares for the day. Advances in those stocks which, it is considered would benefit by declaration of peace, ranged from two to ten points. The public as well as professional interests were buyers.
Oils were the chief beneficiaries, mounting to next maximums at advances of 2 to 10 points, with metals next in favor, recorded gains of 1 to 3 points. Rails moved upward one to three points.
United States Steel gained 1 1/2 points at the start, later forfeited most of it and again moved upward, ends in the war group, Bethlehem and Crucible Steels and Baldwin Locomotive yielded 1 to 2 points.

German Soldiers Ordered to Stop Ruthless Warfare

Amsterdam, Oct. 18.—The German armies in the field have been ordered to refrain from needless destruction of property and cities in occupied territory. According to advices from Germany, newspapers last evening were to publish the following communication:
"The German army command has brought military measures into accord with the step taken for the conclusion of peace. The German armies have received orders to cease all devastation of places, unless they are absolutely forced to follow this course by the military situation for defensive reasons.
"Nevertheless it is to be expected that in the gradual retreat property will be lost which is irreplace-

German Soldiers Told Wilson Wants Them Slain

New York, Oct. 18.—The distribution among German troops by their officers of a tract attacking President Wilson on the ground that it was his will to kill which was responsible for the continuation of the war, was reported October 4 by a representative of the Associated Press with the French Army. The tract attacking President Wilson purports to be a quotation from an article in the newspaper Mir of Moscow.

SPRINGTEX is the underwear with a million little springs in its fabric which "give and take" with every movement of the body, and preserve the shape of the garment despite long wear and hard washings. It is the year-around underwear, light, medium or heavy weight, as you like. "Remember to Buy It—You'll Forget You Have It On" Ask Your Dealer

UTICA KNITTING CO., Makers
Sales Room: 350 Broadway, New York



Store Closes Regularly On Saturdays at Six

BELL 1901-2356 UNITED

Bowman's

HARRISBURG, FRIDAY, OCTOBER 18, 1918.

FOUNDED 1871

In Memoriam

In its heavy toll of death exacted by the grim epidemic this store mourns the loss of one of its most valued associates—O. J. Kelly manager of the men's furnishings, hosiery and underwear division.

He was beloved and respected by all his associates in the store, as well as by those elsewhere who were so fortunate as to know him intimately, and thus realize the exceptional personality and kindness of nature that endeared him to all.

Employees and officials of Bowman & Company join in expressing deep sympathy for those bereft of his companionship and affection.

Georgette Crepe de Chine and Satin Waists

Georgette Crepe Waist, in white, flesh and bisque. Some are hand embroidered while others are handsomely beaded with round or square necks; sizes 36 to 46 **\$4.95 and \$5.95**

White check Satin Waists with roll collar with fine pleating on collar and cuffs **\$7.95**

Crepe de Chine Waist, in white and flesh, trimmed with lace; some have fine tucks while others are hand embroidered round or square neck. Also several tailored models which can be worn either high or low, **\$2.98 to \$6.95**

BOWMAN'S—Third Floor.



Carryall Bag, 25c

A convenient shopping bag made of paper, guaranteed to carry thirty-five pounds. Handle grip and very neat in appearance. This special price of 25c for Saturday.

Silk and Lisle Stockings

Women's silk stockings with high spliced heels, wide garter tops, in black and colors **\$1.75**

Women's silk stockings in plain black and white, **\$2.50**

Women's silk stockings in black, cordovan, gray, Beige and silver, pair **\$3.00**

Women's silk lisle stockings in black, white, brown, and gray, pair **\$1.00**

BOWMAN'S—Main Floor.

Hatters' Plush Sailors

Newest Smart Shapes
Black, Navy, Brown, Purple. Finest quality Hatters' Plush Banded with heavy grosgrain ribbon. Special, **\$4.95**



Unbleached Muslin 22c yd

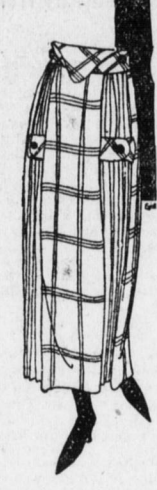
36 inches wide; smooth even thread, will bleach and wash easily; well-known brand, suitable for sheets, pillow cases or general use—no phone or C. O. D. orders accepted—none sold to dealers.

Women's and Misses' Smart Separate Skirts

These are the most recently-created garments to appear for Fall and Winter wear. "The last word" in style is incorporated in their fashioning. Women who are thinking of supplying their wardrobes with one or more of them will be pleased with the assortments which we present for their choosing. These assortments are intermingled with models for street, sport and dress wear in all materials, colors and sizes.

Skirts in navy, black, plaids—some two-piece with fancy pockets and others full pleated .. **\$6.50, \$8.50, \$10.00, \$12.50**

BOWMAN'S—Third Floor



Women's and Children's Underwear

Women's Athena union suits in medium weight and fleece lined, with high neck and long sleeves; Dutch neck and elbow sleeves, low neck, no sleeves; ankle lengths—all sizes, regular sizes, \$2.00; extra sizes, \$2.25.
Children's part-wool union suits in silver gray and white, \$1.75 and \$2.00.

BOWMAN'S—Main Floor.

Silks, Dress and Wash Goods Specially Priced

No Phone Orders, C. O. D. Orders or Samples
Silk Crepe de Chine, \$1.45 yd.

40-inch Crepe de Chine of the finest quality—the product of one of the best American mills. A complete line of light, medium and dark shades, including plenty of white, navy and black—remember

SATURDAY ONLY Premier Crepe, \$1.95 yd.

42-inch Premier Crepe—one of the daintiest fabrics procurable—produced by the country's leading manufacturers. This fabric is adaptable for all seasons wear, and for service and durability is unsurpassed. It does not crease and all fast colors. The color line consists of all the leading 1918 shades. This is a wonderful special and should not be passed up—remember

SATURDAY ONLY Fleece Eiderdown, 32c yd.

36-inch fleeced Eiderdown for house dresses, dressing sacks and gowns—also suitable for warm, comfortable coverings. A most extensive line of pretty designs on medium and dark grounds. Not a bad style or pattern among them. Do not overlook this bargain—remember

SATURDAY ONLY Bed Spreads, \$1.50

Hemmed and crocheted, 68x84, these bed spreads are unusual values, as this price cannot be had at wholesale to-day.

La Bona Corsets, \$1.19

Pink and white with elastic top, strong hose supporters, free hip—extraordinary values at this special Saturday price.

Shoe Special For Women

An excellent shoe with gray kid vamp, cloth tops, welt soles, and with tips, very special at **\$7.95**

Store Closes Regularly On Saturdays at Six

Warm Coats at Modest Prices

The first thing about these coats that will attract you is their becoming charm and attractive appearance. Next you will be impressed with their fine fabrics, which provide warmth without being burdensome. Then you will like their perfect tailoring, effective trimmings and general air of beauty.

Finally, you will be delighted with the very moderate prices which a fortunate purchase enable us to quote—

Coats of velour cloth with Coney fur trimming, in different shades .. **\$25.00**

Coats of melton cloth with pile fabric trimmings and buttons, pleats and belts—in navy, brown and a few blacks, **\$25.00**

Coats of Burella cloth, in dark green, navy, or taupe—plain but attractive with pleats, belts, buttons, and large collar that may be worn high or low; sizes 38 to 44, **\$25.00**

Other coats of Burella cloth, plain tailored, with velvet collar and cuffs, in taupe, green, brown, blue and a few purple; sizes 38 to 44 **\$25.00**

BOWMAN'S—Third Floor.



Saturday Specials From the China & Lamp Departments

Dinner Set—100-piece composition with three meat platters and bread and butter plates; made of American porcelain with neat border decoration in dark yellow and green **\$18.50**

15-piece Tea Set made of Japanese china, richly decorated, consisting of teapot, sugar and cream and six tea cups and saucers **\$1.75**

Electric Boudoir lamp—mahogany finish with silk shade; complete with cord and plug, ready for use **\$1.98**

Thin, white China Tea Cups and Saucer **29c**

Brown Pottery Water Jug, about 2-qt. **12c**

Water Tumblers, heavy bottom—the kind used by restaurants, hotels and boarding houses, dozen **75c**

Saturday Specials From the Housefurnishing Section

Curtain stretcher, 6x12 ft. — made of selected Basswood, pins 1 1/2-inch apart, **\$1.39**

Oil heating stove with oil receptacle holding about 5 quart—will burn fourteen hours **\$4.75**

Aluminum percolator; well made, holding about two quarts **\$1.10**

Aluminum preserving kettle—made of heavy gauge aluminum holding about eight quarts **\$1.25**

Aluminum cooking kettle, Paris shape with bail handle, **\$1.25**

Step ladder, 5-ft.—just the size for curtain hanging and house cleaning **79c**

Closet brushes with bent handles **45c**

Gas heaters that can be put on your gas burner, giving light and heat at same time **69c**

Gas stove tubing with rubber ends in almost all desired length, ft. **9c**

Saturday Specials From the Toy Section

Knitting sets for little girls with yarn, instructions and needles **39c**

Teddy express wagons—one of the best constructed wagons made **\$1.75**

Tillie Tinker, the wonderful dancing girl **59c**

Doll porch swing with cushion and metal stand **98c**

Thrift banks, trick opening **19c**

Saturday Specials From the Trunk and Bag Dept.

Black traveling bag made of genuine cowhide, brass lock and catches, and rich fabric lined **\$6.50**

Leather suit case—24-inch size—good lock and catches, inside straps and shirt pocket **\$6.00**

34-inch canvas-covered trunk with two trays—brass bumpers and corners; with outside straps **\$15.00**

BOWMAN'S—Basement.