

Steelton News Items

Elect William Stonesifer Supervisor of Music Here

William R. Stonesifer, widely-known musician of Steelton last evening was elected supervisor of music of the borough schools by the board in monthly session.

JOHN PORR IN ACTIVE SERVICE

Local Boy Says He Is Up Where the Shells Fall Big and Fast

John W. Porr, son of John L. Porr, a druggist, 147 North Front street, writes an interesting letter of his experience in active service on the front in France.

Reserves Drilling Drafted Men Before Going to Camp

A large number of men subject to draft from Steelton and other sections of this district are taking advantage of the opportunity of getting advance military training given by the Steelton reserves.

MEMORIAL SERVICES

Services in memory of Sergeant Earl Finley who died from wounds received in active service in France, will be held from the home of his parents, 22 South Harrisburg street, at 7 o'clock tomorrow evening.

ASSOCIATION MEETING

A meeting of the Sunday School Association of the Grace United Evangelical Sunday school will be held this evening after the weekly prayer meeting.

VISITING IN BOSTON

Mrs. Lewis Keim, Dr. Karl Keim and Cameron Keim, of Front street and Harry Dayhoff left this morning on a motor trip to Boston.

RESORTS

ATLANTIC CITY, N. J. AMERICAN PLAN TABLES \$2.50 to \$4 daily; \$12.50, \$15, \$17.50, \$20 weekly.

OSBORNE

Pacific and Arkansas ayes. Safely constructed. Edges Wide Halls & Stairways. Elevator. Private Baths. Running Water in Rooms. Bathing from House.

ELBERON

Fireproof Annex. Tennessee Ave. H. Beach. Cap. 400. Central open surroundings; opp. Catholic and Protestant churches. Private bath. RUNNING WATER IN ALL ROOMS

CONTINENTAL

Tennessee Ave. near Beach; always open; private bath; running water in rooms; elevator; excellent table; white service; ocean view. Am. plan; \$3.00 up daily; \$17.50 up weekly.

HOTEL BOSCOBEL

Kentucky Ave. nr. beach; bath; elevator; fine table; bathing privileges; special rates; booklet. Always open. Capacity, 350. A. E. MARION.

GRAND ATLANTIC

Virginia Ave. near beach. Capacity 600. A strictly modern hotel after extensive alterations. Private bath, running water in rooms, elevator, etc. Notable table, white service. \$3.00 up daily, special weekly. W. F. SHAW.

THE WILTSHIRE

Virginia Ave. and Beach. Ocean view. Capacity, 250. Private bath, running water in rooms, elevator, etc. and special rates upon request. American plan. Open all year. Booklet. SAMUEL ELLIS.

ALBEMARLE

CLOSE TO BEACH. Finest bathing etc. Coolest location; 4000 feet porches; fine table, cool rooms, elevator, fine table, fresh vegetables and sea food; catering to those seeking high grade accommodations without the excessive cost. \$12.50 Up Weekly; \$25.00 Up Daily. Booklet. Ownership by J. P. COPE.

"BABY" EXPLODES; SINKS SUBMARINE; CROSS FOR WOMAN

British Seamen Meet German Craft and Cunning and Take U-Boat Toll

London, Aug. 7.—Interesting revelations regarding the work of British mystery ships which have played an important part in the anti-submarine warfare are made by the naval correspondent of The Times. They show how British seamen have met German craft and cunning with craft and cunning.

How "a woman and a baby" accounted for a U-boat is told by the correspondent. The submarine ordered a vessel to surrender and fired a few shells into her. The boats then left the ship, leaving on board a woman, who ran up and down the deck with a baby in her arms as if mad.

The U-boat came alongside the vessel and the woman hurled the "baby" into the open hatch. The "baby" exploded and blew out the bottom of the submarine. The "woman" was decorated with the Victoria Cross.

The correspondent says that the first mention of a mystery ship was in the case of the Baralong, which on August 19, 1915, sank a U-boat after the torpedoing of the British liner Arabic. It will be remembered, he says, that the German government protested that there was nothing to indicate the Baralong's warlike character. The Baralong case was probably not the first in which a ruse was used, and since that time the disguising of armed vessels as merchantmen for dealing with submarines has attained considerable dimensions.

"Howls and moans" adds the naval correspondent "went up in Germany about the treachery of British seamen, but the German allegations curiously ceased at the beginning of 1916. These allegations afforded a typical example of German mentality, for they ignored the fact that in every case the U-boat was an actual or potential assailant, and any ruse of war is considered legitimate by them except when employed against Germany."

Standing of the Crews

HARRISBURG SIDE Philadelphia Division—The 243 crew first to go after 3:45 o'clock: 210, 212, 245, 244, 225, 239, 231, 213.

ENOLA SIDE Philadelphia Division—The 127 crew first to go after 4 o'clock: 123, 122, 130, 115, 121, 129, 112, 111.

PASSENGER SERVICE Philadelphia Division—Engineers up: Welch, Gillums, Lindley, Lippl, Fleam, Gibbons, Osmond, Kennedy.

THE READING The 57 crew first to go after 1 o'clock: 58, 8, 20, 53, 10, 18, 6, 24, 62, 12, 47, 56.

THE READING The 57 crew first to go after 1 o'clock: 58, 8, 20, 53, 10, 18, 6, 24, 62, 12, 47, 56.

THE READING The 57 crew first to go after 1 o'clock: 58, 8, 20, 53, 10, 18, 6, 24, 62, 12, 47, 56.

THE READING The 57 crew first to go after 1 o'clock: 58, 8, 20, 53, 10, 18, 6, 24, 62, 12, 47, 56.

THE READING The 57 crew first to go after 1 o'clock: 58, 8, 20, 53, 10, 18, 6, 24, 62, 12, 47, 56.

THE READING The 57 crew first to go after 1 o'clock: 58, 8, 20, 53, 10, 18, 6, 24, 62, 12, 47, 56.

NEWS OF THE RAILROADS

READING FACTOR IN NEW RECORDS

The volume of business done by the Reading railway continues heavy. On Saturday and Sunday the company handled 37,541 cars on the Reading and Harrisburg divisions.

Five Months' Record In the five months' period the number of tons of freight hauled one mile was 154,000,000,000 as compared with 155,000,000,000 last year.

How "a woman and a baby" accounted for a U-boat is told by the correspondent. The submarine ordered a vessel to surrender and fired a few shells into her.

Penny Shopmen Hear of New Classification

In a supplementary order issued by the United States railroad administration a new classification is made of all railroad shopmen in the matter of wages, hours and conditions of employment.

Underwear and Hosiery For Children

Boys' 50c White Mesh Union Suits, with short sleeves and knee length. Special, Thursday morning only . . . 39c

Men May Save in Socks and Underwear

Men's 19c Black Cotton and Lisle Socks, with slight imperfections. Special, Thursday morning only . . . 12 1/2c

Shoes For Women, Misses and Boys Reduced

Women's \$3.50 Black Suede Calf Pumps, with welted soles and leather military heels; not all sizes. Special, Thursday morning only . . . \$1.98

Suit and Coat Linings

\$1.25 White Cotton Wash Satin, 36 inches wide. Special, Thursday morning only, yard . . . 95c

Colored Dress Goods Specials For Thursday

95c Checked Mohair, 32 inches wide. Special, Thursday morning only, yard . . . 45c

Women's \$3.75 White Wash Skirts \$1.98

Fresh, clean, new styles that have been on sale regularly since their arrival at \$3.75, are offered in a Thursday morning clearance at . . . \$1.98

Women's \$2.98 to \$4.98 Tub Skirts \$1.25

One hundred fine quality white tub skirts, muslin from handling have been taken from our \$2.98 to \$4.95 groups for immediate clearance, the materials are cords, gabardines, linen and novelty weaves, sizes 24 to 33 waist bands. Extra special Thursday morning only . . . \$1.25

PUT BELGIANS' LEVIES INTO PEACE TERMS

London, Aug. 7.—Speaking in the House of Commons yesterday, Lord Robert Cecil, assistant secretary of state for foreign affairs, said that the Germans had levied war contributions to a total of 2,330,000,000 francs upon Belgium, besides enormous fines upon localities, firms and individuals.

Women's Summer Union Suits, 35c

Women's 50c White Lisle Union Suits, with cuffs and lace trimming; knee length. Special, Thursday morning only . . . 35c

Women's Sport Coats in a Sale

\$5.00 Mercerized Sport Coats, in rose, Copen, gold and combination colors. Special, Thursday morning only, \$3.65

Silk Neckwear For Men Half Day Specials

25c and 35c Polka Dot and Silk Poplin Panel Stripe Ties. Special, Thursday morning only, . . . 2 for 25c

Men's \$1.25 Negligee Shirts Thursday Morning 75c

Counter-soiled Negligee Band Style Shirts, in a good assortment of styles; sizes 14 to 17 1/2. Special, Thursday morning only.

Shirt Bargains For Large and Small Men

\$1.00 Blue Chambray Shirts, with separate collars; size 17 only. Special, Thursday morning only . . . 69c

Colored Voiles, Organdies and Tissues Reduced

33c Stripe Voiles, in white and colored grounds. Special, Thursday-morning only, yard . . . 22c

Save a Snug Little Sum on Summer Silks

\$2.00 Gingham Fancy Silks, in stripe designs. Special, Thursday morning only, yard . . . 98c

Black Dress Goods Reductions

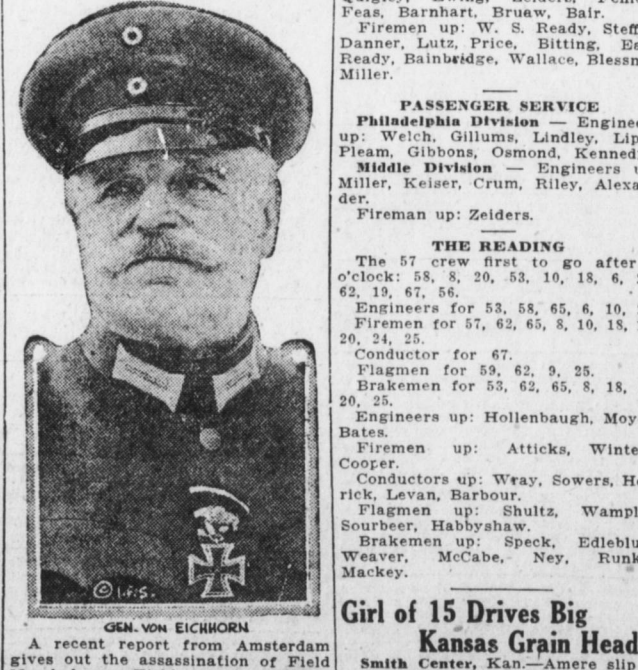
\$4.00 French Serge, 54 inches wide. Special, Thursday morning only, yard . . . \$2.95

Women's \$3.75 White Wash Skirts \$1.98

Fresh, clean, new styles that have been on sale regularly since their arrival at \$3.75, are offered in a Thursday morning clearance at . . . \$1.98

Women's \$2.98 to \$4.98 Tub Skirts \$1.25

One hundred fine quality white tub skirts, muslin from handling have been taken from our \$2.98 to \$4.95 groups for immediate clearance, the materials are cords, gabardines, linen and novelty weaves, sizes 24 to 33 waist bands. Extra special Thursday morning only . . . \$1.25



GEN. VON EICHORN. A recent report from Amsterdam gives out the assassination of Field Marshal von Eichhorn, the German dictator in Ukraine. The report states that von Eichhorn was shot by a Ukrainian partisan, Captain von Dresser, who was mortally wounded by a bomb thrown by a Social-Revolutionist, Von Elchorn, and died a few hours after he was wounded.

Use McNeil's Pain Exterminator—Ad.