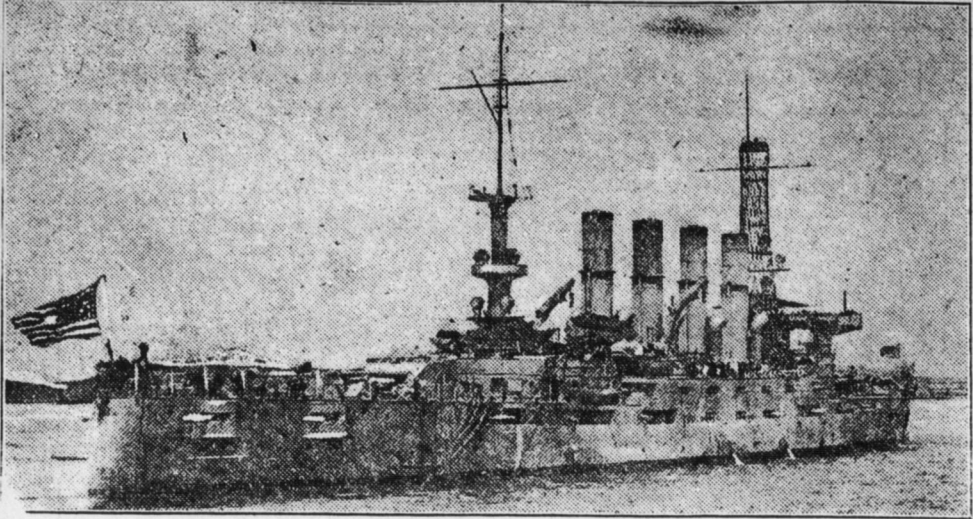


FIRST BIG U. S. WARSHIP TO GO DOWN



Promptness in answering relief calls is believed to have resulted in the saving of a majority of those aboard the San Diego, sunk yesterday afternoon. The sinking occurred ten miles off Fire Island, located fifty miles from New York City.

BELIEVE CRUISER WAS SUNK BY A MINE

(Continued from First Page.) The statement disclosed that five or six mines were destroyed last night in the vicinity of the sinking and that no reports have been received of a submarine near there.

Thirty-one sailors who were landed at Point O'Woods on Long Island yesterday said a torpedo had struck the warship amidships, following which other explosions occurred. Other survivors, among 300 who arrived at this port on a tanker last night were reported to have said that either a coast defense mine or an internal explosion caused the explosion.

While Mr. Nash was having a big dinner prepared for the survivors, the cotagers were getting clothing for them. By the time they had eaten, which was about 5 p. m., outfits were ready for every one.

LEGAL NOTICES

NOTICE.—Letters of Administration on the Estate of Conrad Q. Zimmelman, late of Swatara township, Dauphin County, Pennsylvania, deceased, having been granted to the undersigned, all persons indebted to the said Estate are requested to make immediate payment, and those having claims or demands against the Estate are requested to file the same with the said administrator.

LEGAL NOTICES

NOTICE.—Letters of Administration on the Estate of Conrad Q. Zimmelman, late of Swatara township, Dauphin County, Pennsylvania, deceased, having been granted to the undersigned, all persons indebted to the said Estate are requested to make immediate payment, and those having claims or demands against the Estate are requested to file the same with the said administrator.

LEGAL NOTICES

NOTICE.—Letters of Administration on the Estate of Conrad Q. Zimmelman, late of Swatara township, Dauphin County, Pennsylvania, deceased, having been granted to the undersigned, all persons indebted to the said Estate are requested to make immediate payment, and those having claims or demands against the Estate are requested to file the same with the said administrator.

LEGAL NOTICES

NOTICE.—Letters of Administration on the Estate of Conrad Q. Zimmelman, late of Swatara township, Dauphin County, Pennsylvania, deceased, having been granted to the undersigned, all persons indebted to the said Estate are requested to make immediate payment, and those having claims or demands against the Estate are requested to file the same with the said administrator.

LEGAL NOTICES

NOTICE.—Letters of Administration on the Estate of Conrad Q. Zimmelman, late of Swatara township, Dauphin County, Pennsylvania, deceased, having been granted to the undersigned, all persons indebted to the said Estate are requested to make immediate payment, and those having claims or demands against the Estate are requested to file the same with the said administrator.

LEGAL NOTICES

NOTICE.—Letters of Administration on the Estate of Conrad Q. Zimmelman, late of Swatara township, Dauphin County, Pennsylvania, deceased, having been granted to the undersigned, all persons indebted to the said Estate are requested to make immediate payment, and those having claims or demands against the Estate are requested to file the same with the said administrator.

MARKET CLOSES FIRM FOR WEEK

U. S. Steel Advances; Pacific Mail Shows Slight Final Gain

New York, July 20.—Specialties controlled by pools were the only diverting features of today's standard stock market. Industrial Alcohols and Sumatra Tobacco gained from 3 to 4 points, with a point each for distillers and tobacco products.

Table of stock market prices including U.S. Steel, Pacific Mail, and various other stocks.

CHICAGO BOARD OF TRADE

Table of Chicago Board of Trade prices for various commodities like wheat, corn, and soybeans.

PHILADELPHIA STOCKS

Table of Philadelphia stock market prices for various local stocks.

PHILADELPHIA PRODUCE

Table of Philadelphia produce prices for items like wheat, corn, and various meats.

PHILADELPHIA PRODUCE

Table of Philadelphia produce prices for items like wheat, corn, and various meats.

At the City Markets



While there was not very much variety of products offered for sale today, the prices were above the average and the buyers were many. Home grown products are appearing every week.

ACTIVE WEEK OF PROPERTY SALES

Transfer Facts Show Substantial Condition of Real Estate Market

Few large real estate transfers have been reported during the week, although there is no decrease in the number of properties sold the total sales of the week about equalling the previous records.

CHICAGO CATTLE

Chicago, July 20.—U. S. Bureau of Markets.—Hogs—Receipts, 7,000; market 15c to 25c higher than yesterday's best time, closing slow and weak.

CHICAGO CATTLE

Chicago, July 20.—U. S. Bureau of Markets.—Hogs—Receipts, 7,000; market 15c to 25c higher than yesterday's best time, closing slow and weak.

CHICAGO CATTLE

Chicago, July 20.—U. S. Bureau of Markets.—Hogs—Receipts, 7,000; market 15c to 25c higher than yesterday's best time, closing slow and weak.

CHICAGO CATTLE

Chicago, July 20.—U. S. Bureau of Markets.—Hogs—Receipts, 7,000; market 15c to 25c higher than yesterday's best time, closing slow and weak.

CHICAGO CATTLE

Chicago, July 20.—U. S. Bureau of Markets.—Hogs—Receipts, 7,000; market 15c to 25c higher than yesterday's best time, closing slow and weak.

FOR SALE Cozy Brick Bungalow. Steam heated, electric lights, elegant interior finish and brick garage in rear.

Many Garages Building For Big, Growing Firms at Cost of Nearly \$10,000.

Special Offerings of Municipal Bonds. We are prepared to supply on request data regarding bonds issued by prosperous cities.

Central Iron and Steel Company. Harrisburg, Pennsylvania. Are You Affected By the "Work or Fight" Order?

Additional Classified Ads on Opposite Page.

HELP WANTED—MALE. GENERAL MANAGER for branch store wanted. One who can invest some money and become financially interested.

ROOMS FOR RENT. ONE large baywindow room, pleasant for two men, near bath; one smaller room, for one person, also convenient to bath; use of phone. Apply 111 Pine street.

REAL ESTATE WANTED. WANTED TO RENT—Family of six would like to rent furnished cottage for two or three weeks in August at some point within a 25-mile radius of Harrisburg.

FOR SALE—MISCELLANEOUS. FOR SALE—Baby carriage, round seat, top, lamb, in excellent condition. Call Bell phone 3827R, or 47 North Nineteenth street.

AUTOMOBILES. PIERCE-ARROW, 1911. 6-cylinder, 48-H.P., 7-passenger touring car. Electric starter and lights, seat cover and bumper. Mechanical condition extra good. Paint and tires new.

FOR SALE Cozy Brick Bungalow. Steam heated, electric lights, elegant interior finish and brick garage in rear.

Many Garages Building For Big, Growing Firms at Cost of Nearly \$10,000.

Special Offerings of Municipal Bonds. We are prepared to supply on request data regarding bonds issued by prosperous cities.

Central Iron and Steel Company. Harrisburg, Pennsylvania. Are You Affected By the "Work or Fight" Order?

Additional Classified Ads on Opposite Page.

HELP WANTED—MALE. GENERAL MANAGER for branch store wanted. One who can invest some money and become financially interested.

ROOMS FOR RENT. ONE large baywindow room, pleasant for two men, near bath; one smaller room, for one person, also convenient to bath; use of phone. Apply 111 Pine street.

REAL ESTATE WANTED. WANTED TO RENT—Family of six would like to rent furnished cottage for two or three weeks in August at some point within a 25-mile radius of Harrisburg.

FOR SALE—MISCELLANEOUS. FOR SALE—Baby carriage, round seat, top, lamb, in excellent condition. Call Bell phone 3827R, or 47 North Nineteenth street.

AUTOMOBILES. PIERCE-ARROW, 1911. 6-cylinder, 48-H.P., 7-passenger touring car. Electric starter and lights, seat cover and bumper. Mechanical condition extra good. Paint and tires new.

SALE PARKWAY SALE. 43 Large Plots 60 x 100 AND OVER. FRIDAY AND SATURDAY JULY 19 and 20th. E. M. HERSHEY Owner. WM. J. SOHLAND The Lot Man.

SOHLAND THE LOT MAN. LOTS HOMES IN EVERY SECTION. It Will Pay You to Consult Us. We Specialize. Call Write Phone. SOHLAND 36 N. Third St. SECURITY TRUST Bell 1390 Dial 3573.

Central Iron and Steel Company. Harrisburg, Pennsylvania. The next Liberty Loan will come in October and will be the largest so far. For that reason it will require an extra effort from each of us and we can prepare now by purchasing U. S. Certificates of Indebtedness.