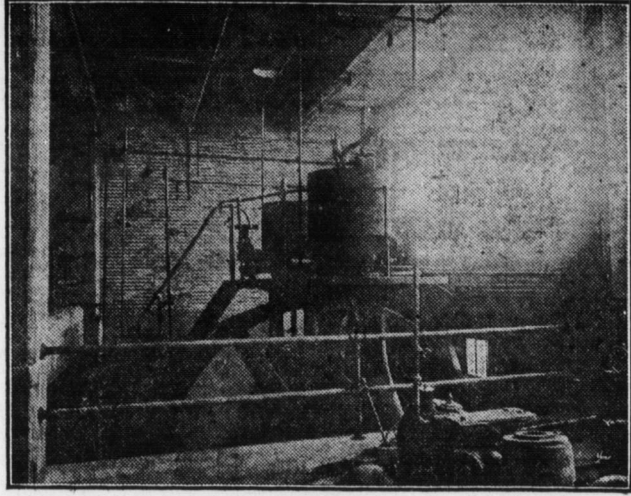


Formal Opening Hershey Creamery Co.'s New Home, Thursday Evening, July 18th



Refrigerating Room of Hershey Creamery Company, Where All Ice Is Manufactured in the Plant

**NEW HERSHEY CREAMERY CO. HOME
DESIGNED BY SPECIAL DAIRY EXPERT**

**Every Modern Facility Which Makes For Best Products
Under Most Sanitary Conditions Has Been
Incorporated in New Plant**

The new home of the Hershey Creamery Company fulfills the last word in design and construction for the manufacture of products from the dairy. The building was designed by a special dairy expert and in all its details is modern in every way. It is of the most modern fireproof construction. The building reveals in beauty and color scheme the taste for the really artistic in commercial structures. The building construction was under the supervision of Joseph W. Pomraning, of Harrisburg.

The building is composed of two stories and measures 180 by 82 feet, making it one of the largest and most commodious of its kind in this section. It is reinforced concrete and steel with brick facing trimmed beautifully with white terra cotta. The new home of the Hershey Creamery Company adds one more link to the long chain of modern business

structures of our city and speaks well for the civic pride of which Harrisburg has plenty.

**Fifty Employees Are Engaged in Harrisburg Alone
Work Interesting in All Details**

In Harrisburg alone there are engaged in the local plant 50 people, all of whom are well paid and enjoy the pleasant surroundings of the plant. Besides these there are many people outside the city who are employed by the company. The company operates a number of plants in the country districts where are manufactured the products of over 600 farms.

I. N. Hershey, of Elizabethtown, Pa., is president of the Hershey Creamery Company; Eli N. Hershey, treasurer and general manager, and Jacob N. Hershey, of Florin, Pa., is a member of the company. The firm is a Pennsylvania corporation.

The Equipment For Condensing Milk
in the plant of
The Hershey Creamery Co.

Furnished by

Joseph Oat & Sons

Established 1788

*Manufacturers of Condensed Milk
Machinery, Copper Kettles, Coils,
Vacuum Apparatus, etc.*

228-234 Quarry Street, Philadelphia, Pa.

**Lumber Material
and Mill Work**

Installed in

The Hershey Creamery

Supplied by

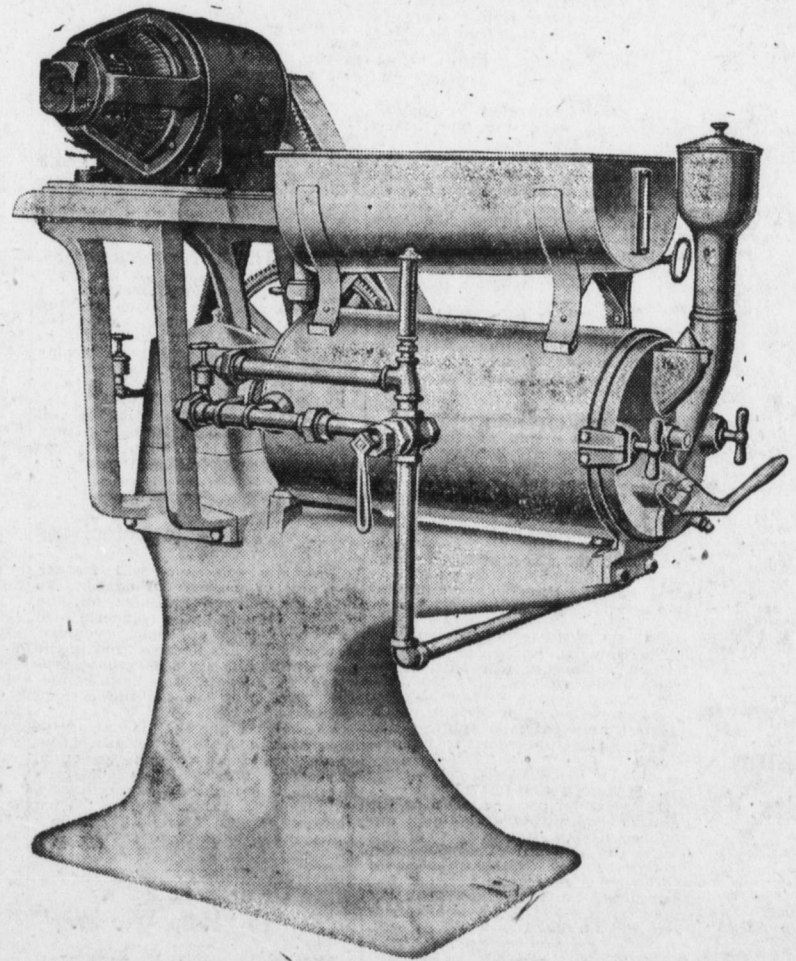
E. C. Snyder

Lumber and Mill Work

Office, Yards and Planing Mill

18th and Holly Sts.

Harrisburg



THE MILLER FREEZERS

Are Used in The Hershey Creamery Company Factory

Furnished by

The Miller Pasteurizing Machine Co.

CANTON, OHIO