

RAILROAD RUMBLES

MORE CHANGES FOR P. R. R. HEADS

Vice-Presidents, With Traffic Managers, to Go Next; Then, Comes Terminals

According to a general belief in local railroad circles, General McAdoo's elimination of officials higher up will be followed by changes in departments at terminals. While the men lower down may not be affected for some time, it is said that vice-presidents and traffic managers will be hit hard within a few days. It is said that all executive officers will be removed.

This sweeping change, foreshadowed from authoritative quarters yesterday, will include vice-presidents, traffic managers, executives in charge of railroad finances and similar positions. In making these changes Mr. McAdoo is not considering abolishing the particular offices customarily regarded as necessary in the operation of the roads.

The purpose of the move is further to separate the operating department from the corporate end of the business, as was done in the appointment of federal managers. Cannot Serve Two Masters The government has taken the position that officials connected with the operation of the roads cannot serve the government and the railroad corporations at the same time.

Railroad Men Enjoying Ten-Day Vacation Trips

Salaried employees who feared they would not get any vacation are now wearing smiles. For the past two weeks attaches about the Pennsylvania Railroad station, and on various offices have been getting time off. Ten days is said to be the limit. Some of the men are taking five days at a time and hope to get an opportunity later in the summer. Heads of the department, however, do not look for any vacation.

Co-operative Men Boost Dance at Summerdale

Chairman Graffius Drake and his committeemen to-day visited York and Lancaster to boost the big dance at Summerdale on June 26. The event will be under the auspices of the Friendship and Co-operative Club, and will be the second annual outdoor meeting of this organization.

Standing of the Crews

HARRISBURG SIDE Philadelphia Division - The 119 crew first to go after 3:30 o'clock: 108, 111, 102, 115. Engineer for 111. Fireman for 108. Flagmen for 119, 102. Brakemen for 108, 111 (2), 107, 115. Engineers up: Greenwalt, Gordon, Bickle, Bair, Smith, Wilker, Housell. Firemen up: Middleton, Greenwood, Masterson, Voglesong. Conductor up: Sellers. Plagmen up: Wenrick. Brakemen up: Brown, Crocker, Keefe, Bair, Clark, Alburger, Buckingham, Kitzmiller, Kaufman, Maurer, Mechan, Stetler. Middle Division - The 27 crew first to go after 3:30 o'clock: 27, 25, 23, 28, 17, 30, 15, 34, 17. Engineer for 27. Fireman for 34. Conductors for 25, 39, 34. Flagmen for 27, 35, 26. Brakemen for 25, 15, 34. Engineers up: Leiter, Leib, Krepps, Smith, Niseley, Swigart, Howard, Leonard, Asper, Rathbone, Corder, R. Snyder, Kaufman, Rowe Hawk, Mortz. Firemen up: Simino, Johnson, Haskins, Nearhood, Humphreys. Conductors up: Lour, Ross, Dotzorn. Brakemen up: Leonard, Stum, Ewing, Ritner, Basom, Barton, Wadell, Wadsworth, Keister, Furlow, Gross, Bell, McKee, Roush, Zimmerman, King. Yard Board - Engineers for 11-C, 14-C, 2-15C, 23C, 35C. Firemen for 1-7C, 5-7C, 12C, 2-14C, 4-15C, 23C, 32C. Engineers up: Sholter, Snell, Barlett, Gettys, Barkey, Sheets, Bair, Eyde, Keever, Ford, Klerner, Crawford, Auman. Firemen up: Sherman, Staff, Withey, Myers, Kistler, Shawfield, Moses, Cain, Mumaw, Rhine.

ENOLA SIDE Philadelphia Division - The 220 crew first to go after 2:45 o'clock: 207, 218, 209, 230, 256, 234. Engineers for 220, 250, 256. Fireman for 220, 218, 256. Conductor for 256. Flagmen for 220, 207, 218, 233, 256 (2). Conductor up: Cullen. Brakemen up: McKee, Trostle, Gutshall, Flora. Middle Division - The 117 crew first to go after 3:40 o'clock: 254, 116, 114. Brakemen for 116, 114. Yard Board - Engineers for 145, 1st 126, 1st 129, 3rd 129, 2nd 132, 1st 106. Firemen for 1st 126, 2nd 126, 1st 132, 2nd 102, 2nd 106. Engineers up: Fenical, Feass, Gingrich, Fortenbaugh, Hinkle, Heron, Bruaw, Ewing, McNally, Hanlon. Firemen up: Nolte, Bainbridge, Hall, Wallace, Hauback, Huber, Price, Baker, Yeager, Fish, Garlin, Danner, Copp. PASSENGER DEPARTMENT Middle Division - Engineers up: D. G. Riley, S. H. Alexander, D. Keane, F. McC. Buck, J. A. Spotts, J. H. Hanley, J. J. Kelley, J. Crimmel, R. M. C. Graham, F. E. Crum, G. G. Kelsner, W. D. McDougall, O. L. Miller. Firemen up: E. E. Ross, S. H. Zelders, H. W. Fletcher, C. L. Sheats, H. H. Longaker, R. A. Arnold, F. A. Pottler, R. F. Mohler, S. P. Stauffer, J. L. Fritz, C. L. Dunn, J. C. Kerber, W. E. Hoffman, F. A. Yon. Middle Division - Engineers up: B. A. Kennedy, H. W. Gilliums, W. S. Lindley, M. Pleam. Firemen up: W. E. Aulthouse, F. L. Floyd, M. G. Shaffner, Wm. Shive, R. K. Strickler. Engineer for 98. One Philadelphia crew here. Fireman for 630. THE READING The 11 crew first to go after 12 o'clock: 70, 18, 55, 58, 59, 56, 60, 21, 12, 10, 69, 9, 97. Engineers for 59, 67, 18. Firemen for 59, 69, 10, 18, Lebanon work train. Conductor for 59. Flagmen for 70, 21. Brakemen for 55, 59, 60, 66, 69, 70, 9, 10, 18. Engineers up: Hammerstein, Barrows, Fletz, Bruaw, Minnich. Firemen up: Putman, Chrismer, Hoover, Leitner, McBeth, Sennet, Martin. Conductors up: Markley, Daub, McCullough. Flagmen up: Cassel, Badorf, Potteiger, Treas, May, Lochenaer. Brakemen up: Buford, Shannon, Swartz, Dell, Tyler, Burnett, Smith, Fry.

JAPONICA GARDENS LUNCHEON DINNER SUPPER MUSIC HOTEL ADELPHI CHESTNUT AT 13TH ST PHILADELPHIA

Rest Your Eyes Your vision may be fairly good and yet glasses are needed temporarily - will afford your eyes relief and comfort. Let us make up a pair of "rest glasses" for you.

R. D. Pratt Eyesight Specialist 26 NORTH THIRD STREET Schlessers Building

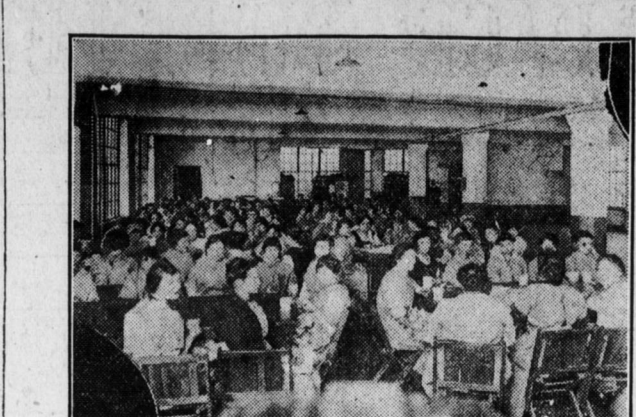
To Discriminating Parents of Boys 10 to 16 Do you realize that there is a camp for your boy?

CAMP MISSISQUOI on Lake Champlain where through MILITARY DISCIPLINE - SWIMMING - BOATING - FISHING - NATURE STUDY - WOOD-CRAFT - HIKING - BASEBALL - TENNIS

Gordon J. Platt Camp Director HARRISBURG ACADEMY Harrisburg, Pa.

School of Commerce AND Harrisburg Business College Troop Building, 15 S. Market St. Bell phone 2551. Day 4233

MOORHEAD KNITTING COMPANY PLANT AND INTERIOR VIEWS



Upper left hand etching, plant where Monito hosiery is made; upper left, corner of recreation and lunch room; below, aisle of knitting room.



Upper left hand etching, plant where Monito hosiery is made; upper left, corner of recreation and lunch room; below, aisle of knitting room.

MOORHEAD FORCE TO HOLD CELEBRATION

[Continued from First Page.]

Manito hose. The reception will continue from 8 to 10 o'clock. The mill will be in operation and there will be a concert by the Municipal Band in the recreation room of the mill. The parade will be formed as follows: Municipal Band, office force, knitting department, looping department, inspecting department, mending department, boarding department, finishing department and shipping department.

President and Plant "No man is useless while he has a friend," quoth Elbert Hubbard in a moment of inspiration. That statement is a principal point in the creed of Robert W. Moorhead, head of the Moorhead Knitting Company. To bring to the fore the products of this company, "Monito" week is being observed by virtually every clothing and merchant in Harrisburg. The firm manufactures "Monito" hosiery.

The president of the company pins his faith to the employees. When asked to what point he ascribed his success, he immediately replied, "To the employees." Mr. Moorhead is a modest man, who has been aptly described as "a substantial looking man with a glow of health on his cheeks, a hearty hand grasp and a merry twinkle in his eye, all indicative of power, health and good humor."

Force Is Patriotic

In the Third Liberty Loan campaign, employees of the company subscribed for more than \$22,000 worth of the bonds. They have purchased thousands of Thrift Stamps, have contributed liberally to the Y. M. C. A., Salvation Army, Knights of Columbus, and Red Cross war funds, and in addition have a Red Cross unit of their own.

Plans for an addition to the plant have already been made. The company now has thirty traveling representatives, sends its products to fourteen foreign countries, and its fifteen branch offices in principal cities throughout the United States. It is Mr. Moorhead's habit to attribute his success to his force, but the employees draw attention to the power of the big concern. There is more than mere "fabric knit into 'Monito' hosiery." There is also knit in, the gladness of life and of living, of contented minds, of well cared for bodies, and the satisfaction of work well done.

Plant Supports

Tomatoes—Roses—Dahlias Hydrangeas and many other bushes and vines. The ADJUSTO is a practical, very simple, unbreakable, and low-priced support which makes for more healthy, thrifty stock. It can be adjusted to any height, and will last a life time. Ask your dealer, and if he has none in stock, write us.

FOREST SEED CO., Cortland, N.Y.

Every Friday Special Has Its Message of Economy

Dives, Pomeroy & Stewart

Extraordinary White Voile Dress Values

Sizes For Misses and Women In a Special Friday Sale

Men's Oxfords, Taffeta Ribbons, Women's Neckwear, Lace Specials, Women's Pique Vests, Men's Jewelry, Cotton Dress Goods, Canvas Gloves, Women's Pumps, Lining Specials, Children's Pumps, Silverware, Notion Specials, Colored Dress Goods, Basement Wash Goods, Black Dress Goods, Jewelry Specials, Women's Handkerchiefs, Men's Percalé Shirts, Curtains, Drapery Remnants, Coat Sweaters, Cretonne, Art Needlework, Drug Specials, Mens' Jewelry, Women's Handkerchiefs, Children's Pumps, Men's Silk Shirts, Men's Chambray Shirts

Please Do Not Ask Our Operators for the Correct Time A Necessary War-Time Request WHEN a subscriber lifts his telephone receiver and asks: "What is the time, please?" the same service on the part of the operator, the same length of time and an equal use of telephone equipment generally are necessary as are required to complete an ordinary telephone call. In every telephone central office there is a switchboard with a certain number of operators' positions; at each position is an operator; before each operator a certain number of subscribers' lines terminate. If these telephone facilities are taxed to their utmost and a large percentage of the calls is for the time of day, the telephone user will appreciate that to eliminate such calls will permit a reassignment or redistribution of both operators' service and telephone equipment and result in our being able to care for the abnormal demands of the present, and the even greater demands that we feel will be made upon our service in the months to come. Every true American sees his personal obligation in the great National task at hand. The Telephone Company is keenly alive to the responsibility that rests upon it. Will you make only the necessary telephone calls and so assist this Company in its service? THE BELL TELEPHONE CO. OF PA. W. H. FETTER, Local Manager, HARRISBURG, PA.