

AUTOMOBILES

1918 FORD Touring, demountable rims, Yale lock, good tires, \$335.00. Maxwell Roadster, fine running order, \$300.00. HORST, Linglestown, Pa.

WANTED - All kinds of used auto tires. We pay highest cash prices. No. 10, H. Esterbrook, 912 North Third St., Dial 4390.

OVERLAND - 6-passenger, No. 63, for sale; in first-class condition, with sundries attachment; has been well taken care of; bargain for some one; price, \$350. V. Marzoff, 417 Broad Street.

FOR SALE - One 7-passenger Peerless Touring Car, in good shape, sale cheap to quick buyer.

HARRISBURG TAXI AND BAGGAGE CO. Strawberry and Aberdeen Sts.

FOR SALE - Two truck Ford used on one-ton capacity. Will sell at less than distributor's cost to quick buyer. Inquire work after accessory House, Cameron and Mulberry streets.

SPECIAL ON AUTOMOBILE AND MOTORCYCLE TIRES with a guarantee of Three Thousand Five Hundred Miles.

2032 Motorcycle Tires, Non-Skid, \$12.50. 2032 Auto Tires, Non-Skid, \$13.75. 2132 Auto Tires, Non-Skid, \$18.25. 2232 Auto Tires, Non-Skid, \$19.90. 2332 Auto Tires, Non-Skid, \$21.50. 2432 Auto Tires, Non-Skid, \$23.10. 2532 Auto Tires, Non-Skid, \$24.75. 2632 Auto Tires, Non-Skid, \$26.40. 2732 Auto Tires, Non-Skid, \$28.05. 2832 Auto Tires, Non-Skid, \$29.70. 2932 Auto Tires, Non-Skid, \$31.35. 3032 Auto Tires, Non-Skid, \$33.00.

MAGNETOS - All types; 4 and 6 Bosch high tension, Elmann, Dixey, etc. Also Magneto and direct current makes of coils, carburetors, etc. A. Schiffman, 1021 Market street, Bel. 1623.

Wanted; used, wrecked or oldtimers, in any condition. See me before purchasing elsewhere. Chas. E. R. Wrecking, A. Schiffman, 1021 Market street, Bel. 1623.

FORD-OVERLAND-CHALMERS - For sale reasonably. Thoroughly overhauled. Fry the Rex Repair Shop for your motor troubles, overhauling, radiator repair work after others have failed. We will satisfy you. We have a man for either a 4 or 6 cylinder.

REX GARAGE & SUPPLY CO., 1917 North Third Street.

EXIDE BATTERY SERVICE. All makes of batteries recharged and repaired; work guaranteed. Auto repairing electrical work a specialty. EXCELSIOR AUTO & BATTERY CO., 11th and Mulberry Sts.

FORD Touring Cars and Roadsters. All late models in first-class condition. Every car guaranteed. Call at 233 Blackberry street, phone 103.

FOR SALE - Five-passenger touring car in fine condition, good 20-H-P. A very dependable car. See Owner, 1828 Park street.

GARAGES ACCESSORIES AND REPAIRS. CAR'S GARAGE, formerly Federick's. All kinds of auto repairs. Ajax tires and supplies, Rayfield Car-bretor, electrical work a specialty. All work guaranteed.

AUTO RADIATORS of all kinds repaired by specialists. Also fenders, lamps, etc. Best service in town, Harrisburg. Auto Radiator Works, 805 North Third street.

YOUR leaky Radiator repaired by an expert. Your motor troubles remedied. Rex Garage, 1917 North Third street.

FOR SALE - One Presto tank and lamp, one new 30x3 1/2 tire, 12 practically new 30x3 and 3 1/2 tubes, two 30x 3 1/2 wheels, mounted by puncture-proof tires. C. E. Anderson, Tire Filler Agent, 801 North Eighteenth street, Dial 5458.

AUTOMOBILISTS - Cut your tire expense. Buy factory seconds. Ask me for prices on any standard make. Dial phone 5928. H. L. Enders, Auto Supplies, 233 South Cameron street.

WM. PENN GARAGE. 304-6 Munch street. Administers for funerals, parties and balls; careful drivers; open day and night. Bel. 1624.

MOTORCYCLES AND BICYCLES. FOR SALE - Dayton bicycle. Good condition. Bargain. Call 1521 Swatara street, City.

1916 DAYTON DELUXE MOTORCYCLE, with sidecar, fully equipped; three tubes, in Al condition. For sale at a bargain to cash buyer. ADP, 1354 Vernon street.

WE BUY old bicycles, coaster brakes, and frames. Call Dial 4990, Esterbrook.

BICYCLES, BICYCLES. New and rebuilt bicycles at very attractive prices; guaranteed repairs; come in and see our square deal. H. E. ESTERBROOK, 912 N. Third Street, Dial 4990.

BICYCLES TO HIRE. DAYTON CYCLE CO., 812 N. 3rd St. DIAL 4990.

BICYCLE REPAIRING BY ALL WORK GUARANTEED DORY SHANER. ANDREW REDMOND, 1077 NORTH THIRD ST.

PUBLIC SALE. AUCTION EXCHANGE. 902 MARKET. I am prepared to handle all kinds of goods. Nothing is too big for me to turn into cash. In almost every house there accumulates a certain amount of odd pieces of furniture, carpets, odd dishes, stoves, etc., which are of no value to the owner.

I have a method whereby the old goods can be made of some value, viz: I will sell them on commission, charging only a small percentage. Should you have anything you would like to have sold come in and talk it over with me.

AUCTIONEER HITE, 902 Market. Auction every Wednesday.

LEGAL NOTICES. NOTICE OF ANNUAL MEETING. The annual meeting of the Stockholders of the Keystone State Fair & Industrial Exposition for the Election of Directors to serve for the year next ensuing, will be held at the Company's Office, 707 Kunkel Building, Harrisburg, Pa., on Saturday, May 4, 1918, at 1 o'clock P. M. H. J. HAMME, Secretary.

WAR FRONT NEWS HITS MARKET; STOCKS BACK

Extreme Recessions a Feature at Today's Brief Session - War Groups Are Sensitive to Pressure, Which Loosens Near End

By Associated Press. Philadelphia, April 27. - Investment stocks as well as various speculative issues suffered extreme recessions of 1 to 2 points in the course of today's brief session. The unfavorable tenor of foreign advices provoked further moderate liquidation and selling. High grade rails, shipping, standard industrials and the several war groups were equally sensitive to pressure which relaxed toward the end, leading stocks making up half their losses. The closing was heavy. Sales approximated 200,000 shares.

NEW YORK STOCKS. Chandler Brothers and Company, members of New York and Philadelphia Stock Exchanges - 3 North Market Square, Harrisburg; 1236 Chestnut street, Philadelphia; 34 Pine street, New York - furnish the following quotations: Open Close. Allis Chalmers 25 1/2 26 1/2. American Can 23 1/2 24 1/2. Am Car and Foundry 78 1/2 79 1/2. Amer Loco 64 64. Amer Smelting 74 1/2 75 1/2. Chesapeake and Ohio 103 1/2 104 1/2. Anaconda 64 64. Baldwin Locomotive 80 80 1/2. Baltimore and Ohio 51 1/2 52 1/2. Bethlehem Steel (B) 78 1/2 79 1/2. Butte Copper 19 1/2 20 1/2. California Petroleum 16 15 1/2. Canadian Pacific 137 1/2 137 1/2. Central Leather 65 1/2 66 1/2. Chesapeake and Ohio 53 1/2 54 1/2. Chi, Mil and St Paul 37 1/2 37 1/2. Col Fuel and Iron 40 40. Corn Products 38 1/2 39 1/2. Crucible Steel 21 1/2 22 1/2. Distilling Securities 50 1/2 51 1/2. Erie 14 1/2 14 1/2. General Motors 116 1/2 117 1/2. Goodrich, B. F. 44 1/2 45 1/2. Great Northern Ore 29 29 1/2. Inspiration Copper 51 1/2 51 1/2. International Paper 40 1/2 41 1/2. Kennecott 20 1/2 21 1/2. Merc War Cts 22 1/2 23 1/2. Merc War Cts pfd 86 1/2 87 1/2. Mex Petroleum 92 1/2 93 1/2. Miami Copper 28 1/2 29 1/2. New York Central 68 1/2 69 1/2. N. Y. N. H. and H. 28 1/2 29 1/2. New York, Ont and West 101 1/2 102 1/2. Norfolk and Western 83 1/2 84 1/2. Northern Pacific 31 1/2 32 1/2. Pennsylvania Railroad 44 1/2 45 1/2. Railway Steel Spring 24 1/2 25 1/2. Ray Con Copper 80 1/2 81 1/2. Reading 104 1/2 105 1/2. Republic Iron and Steel 80 1/2 81 1/2. Southern Pacific 21 1/2 22 1/2. Studebaker 35 1/2 36 1/2. Union Pacific 118 1/2 119 1/2. U S I Alcohol 127 1/2 128 1/2. U S Rubber 57 1/2 58 1/2. U S Steel 94 1/2 95 1/2. U S Steel pfd 110 1/2 111 1/2. Utah Copper 79 79 1/2. Virginia-Carolina Chem 48 48 1/2. Wills-Coverland 17 17 1/2.

PHILADELPHIA STOCKS. Philadelphia, April 27. - Wheat - Market quiet. No. 1, red, \$2.27. No. 1, soft, red, \$2.23. No. 2, red, \$2.24. No. 2, soft, red, \$2.20. Corn - The market is higher. No. 3, yellow, \$1.77; No. 4, yellow, \$1.73. Oats - The market is lower. No. 2, white, 97 1/2 @ 98; No. 3, white, 97 1/2 @ 98. Bran - The market is steady; soft winter, per ton, \$46.50 @ 47.00; spring, \$47.00 @ 47.50. Buttermilk - The market is higher; western, creamery, extras, 46c; nearby printing, fancy, 46c. Eggs - Market firmer; Pennsylvania, and other nearby fairs, free cases, \$1.25 per case; free cases, \$1.20 per case; western, extras, fairs, free cases, \$1.10 per case; do, fairs, free cases, \$1.05 per case; fancy, selected, packed, 42 @ 44c per dozen. Live Poultry - The market is steady; fowls, 32 @ 33c; young, soft-meated roosters, 28 @ 30c; young, starchy roosters, 28 @ 30c; do, old, 27 @ 28c; spring chickens, 23 @ 24c; ducks, 28 @ 30c; do, Indian Runner, 28 @ 30c; old, common, 28c; fresh killed fowls, 34 @ 35c; frozen, fancy, 30 @ 32 1/2c; do, choice, 22 @ 23c; do, small sizes good, 18 @ 20c; do, frozen, roasted chickens, 28 @ 32c; ducks, nearby, 25 @ 32c; do, western, 28 @ 32c; geese, nearby, 26 @ 30c; western, 26 @ 30c. Potatoes - Market lower; New Jersey, No. 1, per basket, 40 @ 60c (33 lbs); Norfolk and Western, No. 1, \$1.75 @ 1.85; Pennsylvania, per 100 lbs, \$1.40 @ 1.50; Maine, per 100 lbs, \$1.25 @ 1.35; Florida, per 150-lb. bag, \$2.75 @ 3.00. Refined Sugars - Market steady; powdered, 8 1/2c; extra fine, granulated, 7 1/2c. Flour - Firm; winter wheat, 100 per cent. flour, \$11.25 @ 11.50 per barrel; Kansas wheat, 100 per cent. flour, \$10.75 @ 11.25 per barrel; spring wheat, 100 per cent. flour, \$10.50 @ 11.00 per barrel. The market is firm; timothy, No. 1, large bales, \$20.00 @ 30.00 per ton; No. 1, small bales, \$25.00 @ 30.00 per ton; No. 2, \$27.00 @ 30.00 per ton; No. 3, \$23.00 @ 25.00 per ton; sample, \$19.00 @ 20.00 per ton; no grade, \$14.00 @ 15.00 per ton. Clover - Light, mixed, \$27.00 @ 28.00 per ton; No. 1, light, \$25.00 @ 26.00 per ton; No. 2, light, mixed, \$24.00 @ 25.00 per ton. Hay - The market is quiet; prime, city, in tierces, 17c; city, special, loose, 17 1/2c; prime country, 15 1/2c; do, 15 1/2c @ 16c.

INDUSTRIALS. Last Sale. Aetna 122. Chevrolet 122. Smith 2 1/2. Wright 8 1/2. Am Marconi 12. Mother Lode 15 1/2. Submarine 15 1/2. U. S. Ship 5 1/2. United Motors 25. INDEPENDENT OILS. Last Sale. Barent 9-16. Cosden 6 1/2. Federal 25. Met Pet 7 1/2. Mother Lode 15 1/2. Boston and Wyo 22. Elk Basin 6 1/2. Glenrock 8 1/2. Island 9 1/2. Mother Lode 15 1/2. Okla P and R 6 1/2. Sapulpa 8 1/2. MINING. Last Sale. Big Ledge 5 1/2. Cal and Jerome 1 1/2. Canada 1 1/2. Jerome Verde 5 1/2. Mother Lode 15 1/2. Tonopah Min 3. Boston and Montana 51. Con Arizona 15-16. Hecla 4 1/2.

LEGAL NOTICES. SEALED BIDS OR PROPOSALS will be received by the Directors of the Poor until 10 o'clock A. M., Saturday, May 18, 1918, for an auxiliary boiler supply system and summer steam supply outfit for kitchen apparatus to be installed at the Dauphin County Almshouse. Plans and specifications can be procured at the office of the Directors of the Poor in the Court House, Harrisburg, Pa. Bids will be opened at 11 o'clock A. M., Saturday, May 18, 1918. FRANK B. SNAVELY, President.

Lend Him A Hand BUY LIBERTY BONDS The National City Company National City Bank Bldg., N. Y. Correspondent Office in 24 Office, 1421 Chestnut St., Philadelphia. Bonds - Short Term Notes - Acceptances RUBBER STAMPS SEALS & STENCILS MFG. BY HBG. STENCIL WORKS 130 LOCUST ST. HBG. PA. Member of Harrisburg Real Estate Board

At the City Markets



Flowers were ready sellers at the markets to-day. Almost every basket carried a bunch of them. Many of the species sold at low prices, and these were taken advantage of by the hundreds of marketgoers. The prices: Rhubarb, 5c; parsley, 1-5c; lettuce, 5-10c; onions, 5c; celery, 10c; asparagus, 20-25c; cabbage, 5-15c; parsnips, 8c; strawberries, 25-30c; cauliflower, 15-25c; new potatoes, 25c per quarter peck; cucumbers, 10c; new Texas onions, 15c; old onions, 10c; green peppers, 3 for 10c; tomatoes, 25c; dried apples, 12c; beans, 35c; chickens, dressed, \$1.25-\$1.75; potatoes, 85c; bacon, 35c; eggs, 35-38c; butter, 45-50c; shoulder, 35c; live chickens, 32-35c; red heads, 5c; dandelion, 5c; egg plant, 15-20c; sweet potatoes, 40c; radishes, 8c; carrots, 5c.

CHICAGO CATTLE. Live Poultry - The market is steady; fowls, 32 @ 33c; young, soft-meated roosters, 28 @ 30c; young, starchy roosters, 28 @ 30c; do, old, 27 @ 28c; spring chickens, 23 @ 24c; ducks, 28 @ 30c; do, Indian Runner, 28 @ 30c; old, common, 28c; fresh killed fowls, 34 @ 35c; frozen, fancy, 30 @ 32 1/2c; do, choice, 22 @ 23c; do, small sizes good, 18 @ 20c; do, frozen, roasted chickens, 28 @ 32c; ducks, nearby, 25 @ 32c; do, western, 28 @ 32c; geese, nearby, 26 @ 30c; western, 26 @ 30c. Potatoes - Market lower; New Jersey, No. 1, per basket, 40 @ 60c (33 lbs); Norfolk and Western, No. 1, \$1.75 @ 1.85; Pennsylvania, per 100 lbs, \$1.40 @ 1.50; Maine, per 100 lbs, \$1.25 @ 1.35; Florida, per 150-lb. bag, \$2.75 @ 3.00. Refined Sugars - Market steady; powdered, 8 1/2c; extra fine, granulated, 7 1/2c. Flour - Firm; winter wheat, 100 per cent. flour, \$11.25 @ 11.50 per barrel; Kansas wheat, 100 per cent. flour, \$10.75 @ 11.25 per barrel; spring wheat, 100 per cent. flour, \$10.50 @ 11.00 per barrel.

WANTED. Superior California Farm Lands Adjustments 65 Twin Falls North Side Land and Water 65 American Water Works and Electric P. O. Box 1345, Pittsburgh.

FOR RENT. Desirable property, 14 rooms, 2 baths; storeroom, first floor. 311 Walnut St. But one door from new Penn-Harris Hotel - opposite State Capitol Park - near one of busiest corners.

Strengthen Your Credit by including among your assets United States Government Bonds. We are prepared to receive subscriptions to the Third Liberty Loan for any amount and in the most suitable way. A. B. Leach & Co., Inc. Investment Securities, 62 Cedar Street, New York. Chicago Boston Philadelphia Buffalo Scranton Baltimore. Represented by LEE A. LARSEN, Harrisburg.

You've Always Wanted To Have a Home of Your Own Now Is Your Chance. We are giving you just the opportunity you have been looking for to buy an Attractive Little Home At Your Own Terms. LOCATED EAST OF PENBROOK. Car Lane Close by and Healthy Surroundings. It offers you the chance to practice your patriotism in planting a War Garden to help win the war. This house has seven rooms; spacious porches, front and rear; on high ground affording excellent drainage and has 1 1/2 acres - enabling owner to garden, truck, have chickens - in fact, an ideal place in every way. Convenient to city - with healthful country surroundings. Don't fail to look into this. Ask M. R. ALLEMAN, 145 FRONT ST., STEELTON, PA. Member Harrisburg Real Estate Board. Bell Phone - Member 74 Dial 5928

J. E. Gipple offers the following vacant houses for sale at reduced prices - No. 906 North Eighteenth street, modern brick house with steam heat and electric light. Price \$3800. No. 118 North Eighteenth street, modern three-story brick house, with side entrance. Price \$3100. No. 316 South Fifteenth street, 7-room brick house with all improvements and in very good repair. Price \$2700. No. 209 West Curtin street, Penbrook, single 7-room frame house with lot 30x150 feet. Price \$2400.

DRAFT COST IS OVER \$850,000

But It Means an Organization Has Been Held Together For Over Ten Months

Pennsylvania has furnished between 80,000 and 90,000 drafted men to the armies of the United States under the selective service act at a cost to the government, exclusive of the movement of men to camps, of \$852,147.92, according to calculations made by Major W. G. Murdock, the state's chief draft registration officer, who is also in charge of disbursements. This sum has been expended over a period of eight months, although the draft organization has been maintained for ten. The expense figures include the pay of members of boards, clerks and physicians; the cost of supplies and the other expenses connected with office work and in this city it is considered that it has been low when it is taken into account that there are maintained a general headquarters and headquarters for 282 boards and that there are in service over 900 members of boards, 1,500 physicians and more than 700 clerks. This organization has been built up and is now in complete running order, furnishing men to the week under a call of two weeks ago. The expenses by months are as follows: October \$12,178.84. November \$18,692.39. December \$138,805.17. January \$107,526.52. February \$11,210.05. March \$50,997.48. April \$176,996.12. The expenses of the last two

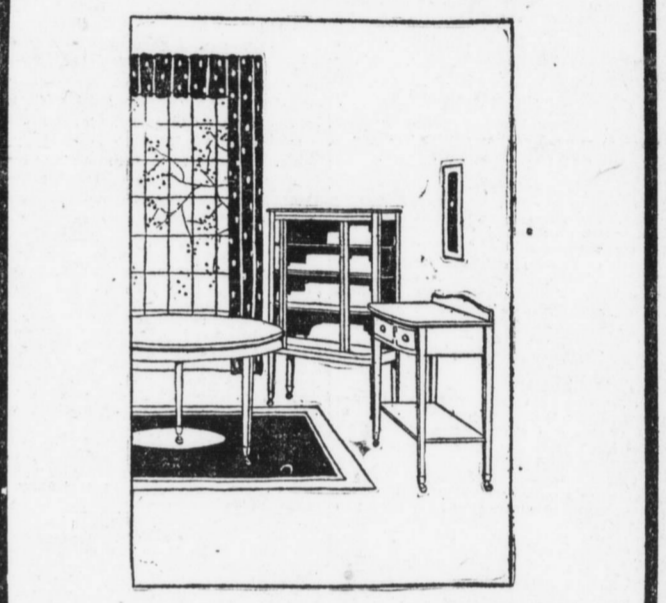
months have run up because of the cost of making up the classification cards under which the recent draft operated. It is expected that there will be a decrease now that this work is finished.

You Can Buy a Lot at Bellevue Park on Easy Payments

—and while you are paying for it you will have a fine garden plot. You will be laying the foundation for a future home-site of the highest value. Join the BELLEVUE QUINTET CLUB and we will tell you how to buy a lot and build a home in the easiest possible way.

Miller Brothers & Co. Members Harrisburg Real Estate Board REAL ESTATE AND INSURANCE LOCUST AND COURT STS.

Everything is not in Building the House - It becomes a Home when it is well furnished



We have been home builders for years and we have made many a family happy. We have a complete line of Furniture for every room in the home and on our easy payment plan you can furnish it well without effort.

White Mountain Refrigerators are best. We have been selling them for years and they have always given perfect satisfaction. BUY YOUR REFRIGATOR NOW. Prices Are Low and Assortments are Best. Gately & Fitzgerald Supply Co. 29-31-33-35 South Second St. A DIFFERENT KIND OF A CREDIT STORE.

To the Voters of Dauphin County: I hereby announce myself as a candidate on the Republican ticket for the office of Representative in the General Assembly from the Second Legislative District in Dauphin county. I am a resident and voter in Susquehanna Township. My platform is for the furtherance of the principles of the Republican party and more particularly, at this time, for the passage of the Prohibition Amendment to the Constitution. I also promise fair consideration to all labor interests. If nominated, I will make the foregoing statements my platform. I earnestly solicit your support at the primaries Tuesday, May 21, 1918. David M. Beck.

PUBLIC SALE!

BUILDING LOTS or GARDEN PLOTS. On the Premises, North and South of Lincoln Street, East of Lebanon Street, Steelton, Pennsylvania. Sat., May 4, 1918, Commencing at 2 P.M.

30 Lots Fronting on Lincoln Street. 30 Lots Fronting on Bessemer Street. 30 Lots Fronting on Ridge Street. 40 Lots Fronting on Harrison Street. 40 Lots Fronting on Baldwin Street. And More Lots on Harrison and Baldwin Streets if You Want Them. This is the most desirably located land in Steelton, excepting none. It lies partly within the Borough limits and partly without. It is away from the smoke and dirt and yet close to the trolley and the steel works. Steelton needs many additional homes right now and will need many more each year to keep pace with the improvements at the plant of the Bethlehem Steel Company, not to mention the Government improvements at Middletown and directly across the river from Steelton, all of which will help to increase the population of Steelton. Buy now before prices advance and build houses, or use your lots for war gardens and build at the close of the war. You can run no possible risk either way, as these lots are for sale at your own prices and must be sold to settle an estate. TERMS - \$5.00 to \$10.00 cash, balance \$5.00 and upward per month at rate of 5% per month. A discount of 10% will be allowed for all cash and a proportionate discount for part cash in advance. Liberty Bonds or Bank Certificates of deposit accepted as cash and accrued interest allowed. Plans may be seen and additional information had at our office No. 122 NORTH FRONT STREET, STEELTON, prior to date of sale. J. A. DUNKLE ESTATE. J. H. Soullard, Auctioneer. A. W. DUNKLE, Executor, D. B. N.