



# Bowman's



BELL 1001-2356 UNITED

HARRISBURG, FRIDAY, MARCH 22, 1918.

FOUNDED 1871

## Complete Displays For Easter

### Suits

Complete display---for women and misses

Navy serge suits, fine men's wear, \$25.00 to \$39.50  
 Braided suits, trimmed with bands or edgings  
 Eton suits, semi-dress, with overtunic skirts  
 Tailored suits, snug shoulders close sleeves, \$25.00 to \$45.00  
 Semi-dress suits, straight-line and semi-fitted styles  
 Tricotine suits, dress models \$45.00 to \$75.00  
 Wool jersey suits, semi-Norfolk and Norfolk styles  
 Semi-tailored suits, mostly in navy serge, \$35.00  
 Serge suits with linen vests and touches of piping  
 Box coat suits, serges, twills and gabardines  
 Tailored suits with semi-fitted coats, \$25.00 to \$45.00  
 Semi-tailored suits with ripple coats and flare coats  
 Extra size suits, for long figures, \$35.00 to \$75.00  
 Dress suits, richly embroidered, in Poirer twill and serge  
 Tailored suits, cable stitching on collars and sleeves  
 Belted suits of fine serge, \$25.00 to \$39.50  
 Serge suits, with one-button cutaway fronts  
 Wool jersey suits, heather mixtures, \$29.50 to \$35.00  
 Oxford gray suits, semi-tailored lines, \$29.50 to \$35.00  
 Semi-tailored suits, patch pockets and fancy collars  
 Eton suits of tricotine, vests of satin or broadcloth  
 Hairline stripe suits in mannish models, \$35.00 to \$55.00  
 Extra size suits, complete assortment for all types

BOWMAN'S—Third Floor

### Waists

Complete display---for women and misses

Georgette crepe, cross-bar tucking, \$7.95  
 Georgette crepe, satin trimmed, \$5.95  
 Georgette crepe, dots in white and flesh, \$7.95  
 Georgette crepe, satin vests, button trimmed, \$4.95  
 Georgette crepe, filet trimming, \$16.50  
 Crepe de chine, in smart, high-neck styles, \$5.95  
 Wash silk, striped collar  
 Smart satin, tailored model, \$8.50  
 Men's wear silk, high neck styles  
 Organdie, smart vestee, \$5.50 to \$9.95  
 Voile, novelty stripes, organdie collar and cuffs, \$2.98  
 Batiste, high necks, tucked front, \$3.95  
 Misses' georgette crepe, slip-on model  
 Misses' georgette crepe, beaded front, \$5.95  
 Misses' voile, real filet and embroidery trimmed  
 Misses' handkerchief linen, \$2.98  
 White voile, colored linen collar and cuffs, \$2.50  
 Georgette crepe, Dutch neck, embroidered, beaded, \$16.50  
 Crepe de chine, shawl or sailor collar, \$6.95  
 Colored georgette crepe, bead trimming, \$10.95  
 Sweaters, sleeveless wool jersey, \$9.95 to \$16.50  
 Sport coats, without collars, new shades, \$10.95  
 Sport coats, plaited or military style, \$16.50  
 Sleeveless jackets, collarless or shawl collar, \$6.95 to \$16.50

BOWMAN'S—Third Floor

### Skirts

Plaid skirts, box-plaited and belted styles  
 White gabardine skirts, wide belts, \$3.98  
 Baronette satin skirts straight lines, newest colors  
 Wool jersey skirts, smart colors, \$12.50  
 Shadow gabardine skirts, \$3.98 to \$5.50  
 Serge and poplin skirts, navy and black, \$5.98 to \$12.50

BOWMAN'S—Third Floor

### Shoes

Pearl gray kid, high boot, full Louis heel, \$12.00  
 Patent vamp in gray and fawn, suede top, Louis heel, \$11.50  
 Dark brown kid high boot, \$11.50  
 Misses' white buck oxfords and pumps, \$5.00 to \$7.00  
 Children's champagne, white, patent, button, \$2.00 to \$3.50  
 Dull kid and patent pumps, Louis heel, \$7.50  
 Dull kid patent pump, all-leather Louis heel, \$6.50  
 Patent leather oxford, full Louis heel, \$7.50  
 Black and brown calf oxfords, plain and wing tip, \$7.00

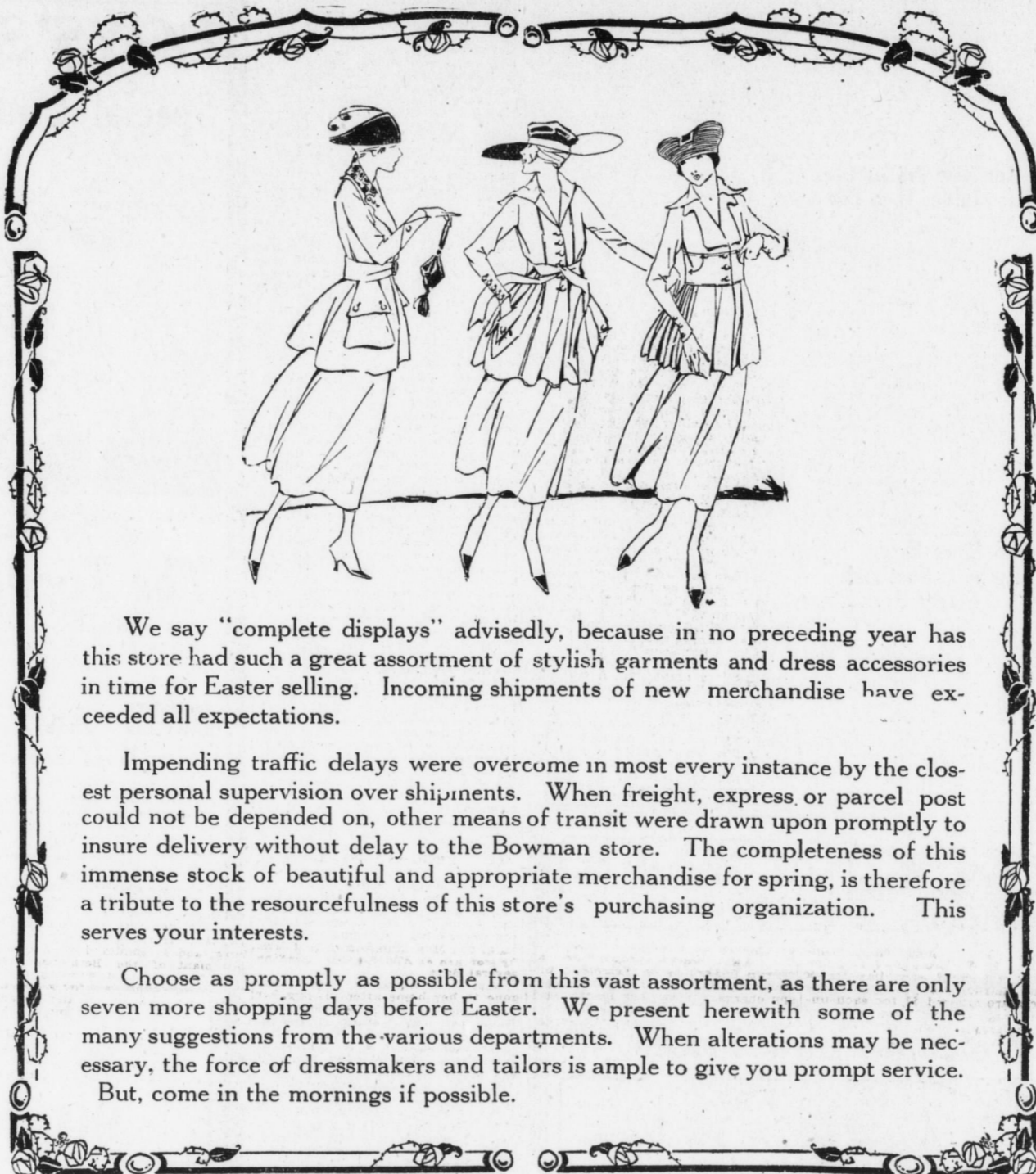
BOWMAN'S—Main Floor

### Children's

#### Coats, Dresses, Hats

Girls' coats, poplin, checks, taffeta, \$3.95 to \$25.00  
 Children's coats, silk, serge, poplin, checks, \$2.95 to \$18.00  
 Children's hats, tailored and trimmed, \$1.95 to \$6.50  
 Girls' hats, milan and fine straw, \$1.95 to \$6.50  
 Girls' fine white dresses, 6 to 14 years, \$2.95 to \$15.95  
 Boys' hats, mixture, silk and serge, 50c to \$2.50  
 Boys' wash suits, white and colors, \$1.50 to \$6.50  
 Infants' short white dresses, 6 mo. to 2 years 75c to \$4.50  
 Infants' long slips, fine assortment, 75c to \$4.50  
 Girls' gingham and chambray dresses, 6 to 14 yrs, \$1 to \$6.50  
 Infants' long white coats, \$2.50 to \$11.95  
 Infants' short white coats, \$2.50 to \$8.50  
 Boys suits, 2 to 8 years \$3.95 to \$6.95  
 Children's creepers, 65c to \$2.95  
 Boys' Oliver Twist Suits, \$1.50 to \$3.95  
 Infants' sweaters, \$2.25 to \$4.50  
 Baby caps, lawn, silks, 50c to \$3.50  
 Children's sweaters, \$2.50 to \$9.50  
 Boys' blouses, white, colors, 65c to \$1.50  
 Boys' shirts, 65c to \$2.50

BOWMAN'S—Second Floor



We say "complete displays" advisedly, because in no preceding year has this store had such a great assortment of stylish garments and dress accessories in time for Easter selling. Incoming shipments of new merchandise have exceeded all expectations.

Impending traffic delays were overcome in most every instance by the closest personal supervision over shipments. When freight, express or parcel post could not be depended on, other means of transit were drawn upon promptly to insure delivery without delay to the Bowman store. The completeness of this immense stock of beautiful and appropriate merchandise for spring, is therefore a tribute to the resourcefulness of this store's purchasing organization. This serves your interests.

Choose as promptly as possible from this vast assortment, as there are only seven more shopping days before Easter. We present herewith some of the many suggestions from the various departments. When alterations may be necessary, the force of dressmakers and tailors is ample to give you prompt service. But, come in the mornings if possible.

## Beautiful Hats

### Dress---Semi-dress---Tailored

Fashionable lacquered hats, flower trimmed hats, ribbon trimmed hats, tailored hats, wing trimmed hats. Countless new models in sailors---high crowns---pokes turbans and wide brims.

Hats of all types for street---motor---travel---afternoon and evening wear.

BOWMAN'S—Third Floor



### Coats

Complete display---for women and misses

Bolivia coats, straight-line models, belted effects  
 Silvertone velours, in beautiful soft colors, \$45.00 to \$75.00  
 Duvet de Laine coats, Monaco blue, lapin, beaver, etc.  
 Serge coats, navy and black, \$19.50 to \$29.50  
 Extra size coats, fashionable materials and models  
 Crystal cloth coats, for dress wear  
 English mixture coats, straight-line mannish styles  
 Slip-on coats, mixture materials, \$25.00  
 Khaki coats, trench models, \$35.00 to \$45.00  
 Tweed coats, rubberized, in belted model  
 Suede cloth coats, with deep collars, \$55.00 to \$79.50  
 Street coats, gabardine, serge, overlaid and friezes  
 Velour coats, set-in and draped pockets, \$35.00  
 Belted coats, military lines, with pleated backs  
 Sleeveless coats of silk, velveteen and jersey, \$55.00  
 Afternoon coats, gabardine and tricotine, \$35.00 to \$55.00  
 Motor coats, overlaid, Irish friezes, and bolivia  
 Misses' dress coats, bell sleeves, silk collars  
 Misses' velour coats, lined to waist, \$25.00  
 Misses' utility coats, for school wear, \$16.50 to \$35.00

BOWMAN'S—Third Floor

### Dresses

Complete display---for women and misses

Custom dresses of foulards in lovely patterns  
 Satin afternoon gowns, tunic effect, \$39.50  
 Figured chiffon dresses, in dainty patterns  
 Georgette and crepe de chine dresses, pleated styles  
 Taffeta dresses, straight lines, \$19.50  
 Street dresses, crepe meteor and crepe de chine, \$19.50  
 Satin afternoon gowns, combined with georgette  
 Serge dresses, silk braided, \$25.00 and \$39.50  
 Serge dresses, in panel skirts, pockets and sashes  
 Wool jersey dresses coat effects, straight-line models  
 Inexpensive dresses of satin, \$16.50 to \$25.00  
 Inexpensive dresses of taffeta and crepe de chine  
 Inexpensive dresses of navy serge, \$12.50 to \$16.50  
 Misses' georgette dresses, with silk embroidery  
 Misses' taffeta dresses, charming styles, \$25.00 to \$45.00  
 Misses' serge dresses, eton and tailored  
 Misses' wool jersey dresses, plain colors, \$25.00 to \$45.00  
 Misses' foulard and georgette dresses, graceful styles  
 Misses' dresses, crepe de chine, \$16.50 and \$25.00  
 Misses' taffeta dresses with crepe georgette sleeves

BOWMAN'S—Third Floor

### Gloves,

#### Veils, Neckwear, Ribbons

Fine French kid gloves, black and white, \$2.50  
 Two-clasp kid gloves, white only, \$1.95  
 Two-clasp heavy silk gloves, white and black, 85c  
 Ready-to-wear veils, 59c to \$2.50  
 New veilings, plain and figured, yard, 25c to \$1.00  
 Satin collars, square, round and roll shapes, 50c to \$3.50  
 Pique collars and sets, 50c to \$1.50  
 Georgette collars and sets, hemstitched and lace trimmed, 50c to \$2.50  
 Pique and satin vests, \$1.00 to \$3.50  
 Cire ribbons, stove polish black, 10c to \$1.25 yard  
 Brocade ribbons, sash and hair widths, 59c to \$1.25 yard  
 Other hair bow ribbons, 25c to 89c yard  
 Georgettes, various shades, 40 inches wide, \$1.85, \$2.00

BOWMAN'S—Main Floor

### Hosiery,

#### Muslin Underwear, Corsets, Petticoats

Camisoles, crepe de chine, satin, \$1.00  
 Glove silk vests, bodice style, \$2.09  
 Negligees, crepe de chine, lace trimmed, \$8.95  
 Modart corset, front lace, \$3.75 to \$5.50  
 W. and B. Stylish Stout Reduso corset, \$4.00 and \$6.50  
 W. and B. back lace corset, white and flesh, \$1.00 and \$2.00  
 Bon Ton back lace, white and flesh, \$3.50 to \$6.50  
 Elastic girdle top corset, flesh, \$2.50 and \$3.50  
 Silk petticoats, chiffon, taffeta, \$3.98 to \$7.50  
 Tub silk petticoats, assorted colors, \$2.98  
 Silk hosiery, black, white and colors, \$1.25 to \$2.00  
 Fancy silk hosiery, embroidered clocks, \$2.50 to \$4.00  
 Women's and children's underwear, spring weight

### Purses

Latest novelties in strap-back purses—top strap in various leathers and colors.  
 Demonstration of Melba perfumes and toilet preparations.

BOWMAN'S—Main Floor

### For Men

Shirts in silk, madras, fibre silk, \$2.00 to \$8.00  
 Men's dress gloves, \$2.00, \$2.50, \$3.00, \$3.50  
 Monito hosiery, plain, silk lisle, silk, 75c to \$1.00  
 Munsing union suits, spring weight, \$1.50 to \$3.00

BOWMAN'S—Main Floor