

SITES IN DEMAND NEAR BIG DEPOTS

Many Important Deals Consummated at Middletown and New Cumberland

It was learned to-day that a number of persons have secured leases on property in the vicinity of Middletown and New Cumberland, while others have taken options on sites...

The Keystone Industrial Corporation reports the sale of a large residence on the site which they had held near Middletown to the Wells Company of Chicago, contractors for the additions and hospital to be built for the aviation supply depot.

Derry Block Changes Owners in Big Deal

The Derry Block was sold yesterday to Samuel Fishman and Robert Rosenberg. The property was owned by the Derry Block Apartment Company...

The Derry Block is bounded on the north by Derry street, west by Fourteenth street, south by Kittanning street, and on the east by the Olivet Presbyterian Church. It is occupied by three stores, a large warehouse, an apartment, a row of six brick houses, a vacant lot and a large double brick house.

"If the vacant lot can't be used for anything else, it'll be for a war garden," Mr. Fishman announced.

THOUSANDS MORE FOR JR. SCHOOLS

School Board Increases Contract Price For Thomas Edison Building

More than \$11,000 additional to the contract price for the erection of the Thomas A. Edison Junior High school, Nineteenth and Chestnut streets, will be spent by the school district, it was decided yesterday by the directors...

The additional expenditure by the Board will provide for use of light brick instead of red and will improve the appearance of the structure. Other changes include a suspended ceiling in the basement and a new preparation to be used for the floors instead of cement.

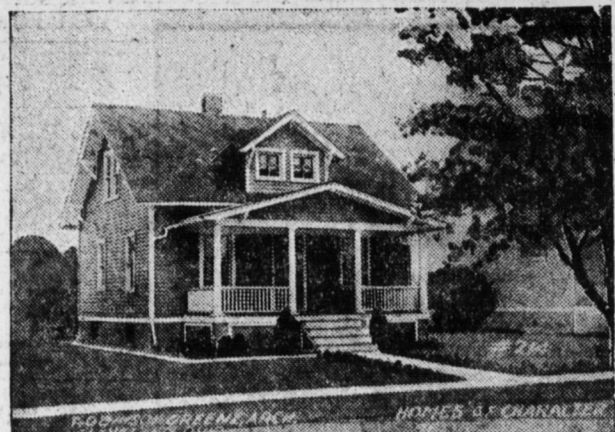
City Superintendent F. E. Downes made a short report of the annual convention of superintendents at Atlantic City. He also called attention to the possible shortage of teachers next year, as in a number of districts this year the shortages reported are from fifteen to twenty-five per cent.

G. M. MacAdam, of the Bureau of Municipal Research, appeared before the directors to explain methods best for starting a new system of accounts in the city district. Commencement plans were arranged and the events for the various schools will be held on the following dates: Central High, Friday morning, June 14, Orpheum or Majestic Theater; Technical High, Thursday evening, June 15, Technical High School auditorium; Teachers Training school, Friday evening, May 24, Technical High School.

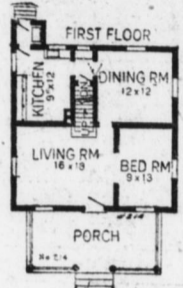
The Board also approved the recommendation giving President Robert A. Enders and Secretary D. D. Hamelbaugh authority to pay bills at once in order to take advantage of discounts. Professors yesterday to explain the work which was done at the school last summer.

"If the vacant lot can't be used for anything else, it'll be for a war garden," Mr. Fishman announced.

A Home of Character

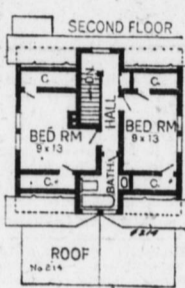


In response to the call for a roomy house which can be built for a low cost we have designed this tasty cottage. Six rooms are provided, together with bath. The building is 26x26 feet, with a basement under the entire house. Hot air heat, electric lights, and complete bath and kitchen plumbing are included in the estimated cost, \$2,400.



The housewife will notice the convenience of the kitchen arrangement and will appreciate the refrigerator room and inclosed entry. The partition between livingroom and bedroom can be replaced by a colonade and the smaller room treated as a library. This arrangement gives the value of a livingroom across the entire front and at the same time the arch adds much to the decorative effect.

For further information write Real Estate Editor, Harrisburg Telegraph.



PLAN TO ENLARGE MISSION HOUSE

Bethesda to Greatly Increase Facilities For Doing Good

The work of the Bethesda Mission, located at 107 1/2 South Second street, has developed so much recently that further expansion is necessary.

In order to properly take care of the needs of the mission, the board of managers, at a recent meeting, authorized the leasing of the entire building where the present assembly room of the mission is located.

The basement of the building will be equipped with shower baths and sleeping accommodations, where homeless men can find a night's lodging and clean up, after which they will be sent out to some of the Harrisburg industries for employment.

The third floor will contain a large dormitory, equipped with about fifty beds, where workmen can find a clean bed at a small cost. In addition to this, the second and third floors will have about twenty-five private rooms at reasonable prices for men.

The need of such dormitory facilities is proved by the fact that during the month of February 920 were lodged in the limited quarters the mission has been renting across the street, and many men had to be turned away on account of lack of facilities.

In addition to the nightly gospel meetings and lodging of men, the mission has been furnishing about 1,200 meals per month to men.

The proposition of furnishing the building recently leased for dormitory purposes has been undertaken by a number of women representing various churches of different denominations of the city, which are interested in the work the mission is doing.

Articles suitable for this purpose will be gladly accepted by the superintendent of the mission, John Fulton, under whose leadership the mission has had such a rapid development.

Brisk Trading Recorded by Real Estate Men For the Last Week

Real estate has been quite brisk the past week, especially in sales of dwelling houses.

Farms have not been very active so far as actual sales go, but a number of farms have been sold during the past week and the transfers of titles will take place between now and April 1. This is following the usual custom, as farmers must know several months ahead of moving time, which necessitates arrangements or leases between the owner and tenant frequently as early as six to eight months ahead.

Crops have been fair, prices very good and the farms that have been sold were at what seems to be quite reasonable figures, especially in view of the high prices for farm products of all kinds.

Lot selling has been rather slow, which is due in a large measure to the lack of immediate building operations. However, there are indications that this condition will not last long, as inquiries indicate that the people are considering their own needs and many of them are figuring on buying vacant ground and holding it until they are ready to build.

Deals in business locations and large-than-ordinary propositions are taking place right along and the market is certain to become more active all the time. This condition is certain: the growth of Harrisburg compels it, and the man with a vision of the prospective future of a whole is now and is going to continue to take advantage of profitable investments in Harrisburg real estate.

City Shows an Increasing Interest in 'Home Buying'

Increasing interest in the "home-buying" campaign and an unprecedented activity in the market of moderate priced homes is reported by realty dealers throughout the city.

Mr. Gipple reports the sale of the property at 1822 Regina street, owned by J. F. Brooke, to Ernest Eshenaur, of Oberlin, and 318 South Eleventh street, owned by C. F. Conover, to R. R. Strawhecker.

Angry Dakota Mob Runs Socialists Out of Town

Scotland, S. D., March 16.—William C. Remmer, of Parkston, S. D., Socialist and executive secretary of the South Dakota branch of the People's Council of America for Democracy and Terms of Peace, and August Friedrich, of Tripp, S. D., were forced to leave Scotland on foot yesterday by a mob of angry citizens.

The men left town as the mob was forming with the announced intention of using tar and feathers.

The men left town as the mob was forming with the announced intention of using tar and feathers.

With the American Army in France, March 15.—Captain "Archie" Roosevelt received his decoration for bravery while he was lying on an operation table in the evacuation hospital, it has just been learned. It also was announced that twenty-five other Americans, including Colonel Douglas MacArthur, the chief of staff, had received the French Croix de Guerre for gallantry in action.

An operation on Captain Roosevelt.

REALTY SALES SHOW INCREASE

Many City and County Transfers Recorded With James E. Lentz

Sale of property in the city during the last week show a steady increase in comparison with records of the few weeks previous. The largest transaction recorded was the sale of the nineteen brick dwellings in Kelker and Fulton streets from the Storris estate to Lewis Silbert, who in turn sold them to Dr. Louis C. Goldman.

Realty transfers of the last few days which have been filed at the office of County Recorder James E. Lentz, follow: Samuel F. Hassler to Herbert S. Barr, three-story brick, 1332 North Second street, \$1,000; Harry P. Gramm to Alfred G. Eden, three three-story houses, 1203-05-07 Walnut street, \$1,000; Isaac N. Hershey to Ruth Matthews, lots, Perry township, \$1,000; Ida M. Milliken to Joseph H. Fite, lot, Swatara and Juniata streets, Dauphin, \$1,500; Christian W. Lynch to Harry C. Showalter, brick dwelling, 540 South Sixteenth street, \$1,000; John H. Lingle to W. S. Shell, lot, East Hanover township, \$500; Harry E. Engelbert to George S. Beal, two-and-one-half-story brick, 3018 North Second street, consideration probably \$4,000; Adam Baumbach to David Levin, two-and-one-half-story, 309 Boas street, \$1,000; Amanda Davis to Ethel D. Kriser, lot, Royaltown, \$160; Harry P. Gramm to Alfred G. Eden, three three-story houses, 1203-05-07 Walnut street, \$1,000; Isaac N. Hershey to Ruth Matthews, lots, Perry township, \$1,000; Ida M. Milliken to Joseph H. Fite, lot, Swatara and Juniata streets, Dauphin, \$1,500; Christian W. Lynch to Harry C. Showalter, brick dwelling, 540 South Sixteenth street, \$1,000; John H. Lingle to W. S. Shell, lot, East Hanover township, \$500; Harry E. Engelbert to George S. Beal, two-and-one-half-story brick, 3018 North Second street, consideration probably \$4,000; Adam Baumbach to David Levin, two-and-one-half-story, 309 Boas street, \$1,000; Amanda Davis to Ethel D. Kriser, lot, Royaltown, \$160; Harry P. Gramm to Alfred G. Eden, three three-story houses, 1203-05-07 Walnut street, \$1,000; Isaac N. Hershey to Ruth Matthews, lots, Perry township, \$1,000; Ida M. Milliken to Joseph H. Fite, lot, Swatara and Juniata streets, Dauphin, \$1,500; Christian W. Lynch to Harry C. Showalter, brick dwelling, 540 South Sixteenth street, \$1,000; John H. Lingle to W. S. Shell, lot, East Hanover township, \$500; Harry E. Engelbert to George S. Beal, two-and-one-half-story brick, 3018 North Second street, consideration probably \$4,000; Adam Baumbach to David Levin, two-and-one-half-story, 309 Boas street, \$1,000; Amanda Davis to Ethel D. Kriser, lot, Royaltown, \$160; Harry P. Gramm to Alfred G. Eden, three three-story houses, 1203-05-07 Walnut street, \$1,000; Isaac N. Hershey to Ruth Matthews, lots, Perry township, \$1,000; Ida M. Milliken to Joseph H. Fite, lot, Swatara and Juniata streets, Dauphin, \$1,500; Christian W. Lynch to Harry C. Showalter, brick dwelling, 540 South Sixteenth street, \$1,000; John H. Lingle to W. S. Shell, lot, East Hanover township, \$500; Harry E. Engelbert to George S. Beal, two-and-one-half-story brick, 3018 North Second street, consideration probably \$4,000; Adam Baumbach to David Levin, two-and-one-half-story, 309 Boas street, \$1,000; Amanda Davis to Ethel D. Kriser, lot, Royaltown, \$160; Harry P. Gramm to Alfred G. Eden, three three-story houses, 1203-05-07 Walnut street, \$1,000; Isaac N. Hershey to Ruth Matthews, lots, Perry township, \$1,000; Ida M. Milliken to Joseph H. Fite, lot, Swatara and Juniata streets, Dauphin, \$1,500; Christian W. Lynch to Harry C. Showalter, brick dwelling, 540 South Sixteenth street, \$1,000; John H. Lingle to W. S. Shell, lot, East Hanover township, \$500; Harry E. Engelbert to George S. Beal, two-and-one-half-story brick, 3018 North Second street, consideration probably \$4,000; Adam Baumbach to David Levin, two-and-one-half-story, 309 Boas street, \$1,000; Amanda Davis to Ethel D. Kriser, lot, Royaltown, \$160; Harry P. Gramm to Alfred G. Eden, three three-story houses, 1203-05-07 Walnut street, \$1,000; Isaac N. Hershey to Ruth Matthews, lots, Perry township, \$1,000; Ida M. Milliken to Joseph H. Fite, lot, Swatara and Juniata streets, Dauphin, \$1,500; Christian W. Lynch to Harry C. Showalter, brick dwelling, 540 South Sixteenth street, \$1,000; John H. Lingle to W. S. Shell, lot, East Hanover township, \$500; Harry E. Engelbert to George S. Beal, two-and-one-half-story brick, 3018 North Second street, consideration probably \$4,000; Adam Baumbach to David Levin, two-and-one-half-story, 309 Boas street, \$1,000; Amanda Davis to Ethel D. Kriser, lot, Royaltown, \$160; Harry P. Gramm to Alfred G. Eden, three three-story houses, 1203-05-07 Walnut street, \$1,000; Isaac N. Hershey to Ruth Matthews, lots, Perry township, \$1,000; Ida M. Milliken to Joseph H. Fite, lot, Swatara and Juniata streets, Dauphin, \$1,500; Christian W. Lynch to Harry C. Showalter, brick dwelling, 540 South Sixteenth street, \$1,000; John H. Lingle to W. S. Shell, lot, East Hanover township, \$500; Harry E. Engelbert to George S. Beal, two-and-one-half-story brick, 3018 North Second street, consideration probably \$4,000; Adam Baumbach to David Levin, two-and-one-half-story, 309 Boas street, \$1,000; Amanda Davis to Ethel D. Kriser, lot, Royaltown, \$160; Harry P. Gramm to Alfred G. Eden, three three-story houses, 1203-05-07 Walnut street, \$1,000; Isaac N. Hershey to Ruth Matthews, lots, Perry township, \$1,000; Ida M. Milliken to Joseph H. Fite, lot, Swatara and Juniata streets, Dauphin, \$1,500; Christian W. Lynch to Harry C. Showalter, brick dwelling, 540 South Sixteenth street, \$1,000; John H. Lingle to W. S. Shell, lot, East Hanover township, \$500; Harry E. Engelbert to George S. Beal, two-and-one-half-story brick, 3018 North Second street, consideration probably \$4,000; Adam Baumbach to David Levin, two-and-one-half-story, 309 Boas street, \$1,000; Amanda Davis to Ethel D. Kriser, lot, Royaltown, \$160; Harry P. Gramm to Alfred G. Eden, three three-story houses, 1203-05-07 Walnut street, \$1,000; Isaac N. Hershey to Ruth Matthews, lots, Perry township, \$1,000; Ida M. Milliken to Joseph H. Fite, lot, Swatara and Juniata streets, Dauphin, \$1,500; Christian W. Lynch to Harry C. Showalter, brick dwelling, 540 South Sixteenth street, \$1,000; John H. Lingle to W. S. Shell, lot, East Hanover township, \$500; Harry E. Engelbert to George S. Beal, two-and-one-half-story brick, 3018 North Second street, consideration probably \$4,000; Adam Baumbach to David Levin, two-and-one-half-story, 309 Boas street, \$1,000; Amanda Davis to Ethel D. Kriser, lot, Royaltown, \$160; Harry P. Gramm to Alfred G. Eden, three three-story houses, 1203-05-07 Walnut street, \$1,000; Isaac N. Hershey to Ruth Matthews, lots, Perry township, \$1,000; Ida M. Milliken to Joseph H. Fite, lot, Swatara and Juniata streets, Dauphin, \$1,500; Christian W. Lynch to Harry C. Showalter, brick dwelling, 540 South Sixteenth street, \$1,000; John H. Lingle to W. S. Shell, lot, East Hanover township, \$500; Harry E. Engelbert to George S. Beal, two-and-one-half-story brick, 3018 North Second street, consideration probably \$4,000; Adam Baumbach to David Levin, two-and-one-half-story, 309 Boas street, \$1,000; Amanda Davis to Ethel D. Kriser, lot, Royaltown, \$160; Harry P. Gramm to Alfred G. Eden, three three-story houses, 1203-05-07 Walnut street, \$1,000; Isaac N. Hershey to Ruth Matthews, lots, Perry township, \$1,000; Ida M. Milliken to Joseph H. Fite, lot, Swatara and Juniata streets, Dauphin, \$1,500; Christian W. Lynch to Harry C. Showalter, brick dwelling, 540 South Sixteenth street, \$1,000; John H. Lingle to W. S. Shell, lot, East Hanover township, \$500; Harry E. Engelbert to George S. Beal, two-and-one-half-story brick, 3018 North Second street, consideration probably \$4,000; Adam Baumbach to David Levin, two-and-one-half-story, 309 Boas street, \$1,000; Amanda Davis to Ethel D. Kriser, lot, Royaltown, \$160; Harry P. Gramm to Alfred G. Eden, three three-story houses, 1203-05-07 Walnut street, \$1,000; Isaac N. Hershey to Ruth Matthews, lots, Perry township, \$1,000; Ida M. Milliken to Joseph H. Fite, lot, Swatara and Juniata streets, Dauphin, \$1,500; Christian W. Lynch to Harry C. Showalter, brick dwelling, 540 South Sixteenth street, \$1,000; John H. Lingle to W. S. Shell, lot, East Hanover township, \$500; Harry E. Engelbert to George S. Beal, two-and-one-half-story brick, 3018 North Second street, consideration probably \$4,000; Adam Baumbach to David Levin, two-and-one-half-story, 309 Boas street, \$1,000; Amanda Davis to Ethel D. Kriser, lot, Royaltown, \$160; Harry P. Gramm to Alfred G. Eden, three three-story houses, 1203-05-07 Walnut street, \$1,000; Isaac N. Hershey to Ruth Matthews, lots, Perry township, \$1,000; Ida M. Milliken to Joseph H. Fite, lot, Swatara and Juniata streets, Dauphin, \$1,500; Christian W. Lynch to Harry C. Showalter, brick dwelling, 540 South Sixteenth street, \$1,000; John H. Lingle to W. S. Shell, lot, East Hanover township, \$500; Harry E. Engelbert to George S. Beal, two-and-one-half-story brick, 3018 North Second street, consideration probably \$4,000; Adam Baumbach to David Levin, two-and-one-half-story, 309 Boas street, \$1,000; Amanda Davis to Ethel D. Kriser, lot, Royaltown, \$160; Harry P. Gramm to Alfred G. Eden, three three-story houses, 1203-05-07 Walnut street, \$1,000; Isaac N. Hershey to Ruth Matthews, lots, Perry township, \$1,000; Ida M. Milliken to Joseph H. Fite, lot, Swatara and Juniata streets, Dauphin, \$1,500; Christian W. Lynch to Harry C. Showalter, brick dwelling, 540 South Sixteenth street, \$1,000; John H. Lingle to W. S. Shell, lot, East Hanover township, \$500; Harry E. Engelbert to George S. Beal, two-and-one-half-story brick, 3018 North Second street, consideration probably \$4,000; Adam Baumbach to David Levin, two-and-one-half-story, 309 Boas street, \$1,000; Amanda Davis to Ethel D. Kriser, lot, Royaltown, \$160; Harry P. Gramm to Alfred G. Eden, three three-story houses, 1203-05-07 Walnut street, \$1,000; Isaac N. Hershey to Ruth Matthews, lots, Perry township, \$1,000; Ida M. Milliken to Joseph H. Fite, lot, Swatara and Juniata streets, Dauphin, \$1,500; Christian W. Lynch to Harry C. Showalter, brick dwelling, 540 South Sixteenth street, \$1,000; John H. Lingle to W. S. Shell, lot, East Hanover township, \$500; Harry E. Engelbert to George S. Beal, two-and-one-half-story brick, 3018 North Second street, consideration probably \$4,000; Adam Baumbach to David Levin, two-and-one-half-story, 309 Boas street, \$1,000; Amanda Davis to Ethel D. Kriser, lot, Royaltown, \$160; Harry P. Gramm to Alfred G. Eden, three three-story houses, 1203-05-07 Walnut street, \$1,000; Isaac N. Hershey to Ruth Matthews, lots, Perry township, \$1,000; Ida M. Milliken to Joseph H. Fite, lot, Swatara and Juniata streets, Dauphin, \$1,500; Christian W. Lynch to Harry C. Showalter, brick dwelling, 540 South Sixteenth street, \$1,000; John H. Lingle to W. S. Shell, lot, East Hanover township, \$500; Harry E. Engelbert to George S. Beal, two-and-one-half-story brick, 3018 North Second street, consideration probably \$4,000; Adam Baumbach to David Levin, two-and-one-half-story, 309 Boas street, \$1,000; Amanda Davis to Ethel D. Kriser, lot, Royaltown, \$160; Harry P. Gramm to Alfred G. Eden, three three-story houses, 1203-05-07 Walnut street, \$1,000; Isaac N. Hershey to Ruth Matthews, lots, Perry township, \$1,000; Ida M. Milliken to Joseph H. Fite, lot, Swatara and Juniata streets, Dauphin, \$1,500; Christian W. Lynch to Harry C. Showalter, brick dwelling, 540 South Sixteenth street, \$1,000; John H. Lingle to W. S. Shell, lot, East Hanover township, \$500; Harry E. Engelbert to George S. Beal, two-and-one-half-story brick, 3018 North Second street, consideration probably \$4,000; Adam Baumbach to David Levin, two-and-one-half-story, 309 Boas street, \$1,000; Amanda Davis to Ethel D. Kriser, lot, Royaltown, \$160; Harry P. Gramm to Alfred G. Eden, three three-story houses, 1203-05-07 Walnut street, \$1,000; Isaac N. Hershey to Ruth Matthews, lots, Perry township, \$1,000; Ida M. Milliken to Joseph H. Fite, lot, Swatara and Juniata streets, Dauphin, \$1,500; Christian W. Lynch to Harry C. Showalter, brick dwelling, 540 South Sixteenth street, \$1,000; John H. Lingle to W. S. Shell, lot, East Hanover township, \$500; Harry E. Engelbert to George S. Beal, two-and-one-half-story brick, 3018 North Second street, consideration probably \$4,000; Adam Baumbach to David Levin, two-and-one-half-story, 309 Boas street, \$1,000; Amanda Davis to Ethel D. Kriser, lot, Royaltown, \$160; Harry P. Gramm to Alfred G. Eden, three three-story houses, 1203-05-07 Walnut street, \$1,000; Isaac N. Hershey to Ruth Matthews, lots, Perry township, \$1,000; Ida M. Milliken to Joseph H. Fite, lot, Swatara and Juniata streets, Dauphin, \$1,500; Christian W. Lynch to Harry C. Showalter, brick dwelling, 540 South Sixteenth street, \$1,000; John H. Lingle to W. S. Shell, lot, East Hanover township, \$500; Harry E. Engelbert to George S. Beal, two-and-one-half-story brick, 3018 North Second street, consideration probably \$4,000; Adam Baumbach to David Levin, two-and-one-half-story, 309 Boas street, \$1,000; Amanda Davis to Ethel D. Kriser, lot, Royaltown, \$160; Harry P. Gramm to Alfred G. Eden, three three-story houses, 1203-05-07 Walnut street, \$1,000; Isaac N. Hershey to Ruth Matthews, lots, Perry township, \$1,000; Ida M. Milliken to Joseph H. Fite, lot, Swatara and Juniata streets, Dauphin, \$1,500; Christian W. Lynch to Harry C. Showalter, brick dwelling, 540 South Sixteenth street, \$1,000; John H. Lingle to W. S. Shell, lot, East Hanover township, \$500; Harry E. Engelbert to George S. Beal, two-and-one-half-story brick, 3018 North Second street, consideration probably \$4,000; Adam Baumbach to David Levin, two-and-one-half-story, 309 Boas street, \$1,000; Amanda Davis to Ethel D. Kriser, lot, Royaltown, \$160; Harry P. Gramm to Alfred G. Eden, three three-story houses, 1203-05-07 Walnut street, \$1,000; Isaac N. Hershey to Ruth Matthews, lots, Perry township, \$1,000; Ida M. Milliken to Joseph H. Fite, lot, Swatara and Juniata streets, Dauphin, \$1,500; Christian W. Lynch to Harry C. Showalter, brick dwelling, 540 South Sixteenth street, \$1,000; John H. Lingle to W. S. Shell, lot, East Hanover township, \$500; Harry E. Engelbert to George S. Beal, two-and-one-half-story brick, 3018 North Second street, consideration probably \$4,000; Adam Baumbach to David Levin, two-and-one-half-story, 309 Boas street, \$1,000; Amanda Davis to Ethel D. Kriser, lot, Royaltown, \$160; Harry P. Gramm to Alfred G. Eden, three three-story houses, 1203-05-07 Walnut street, \$1,000; Isaac N. Hershey to Ruth Matthews, lots, Perry township, \$1,000; Ida M. Milliken to Joseph H. Fite, lot, Swatara and Juniata streets, Dauphin, \$1,500; Christian W. Lynch to Harry C. Showalter, brick dwelling, 540 South Sixteenth street, \$1,000; John H. Lingle to W. S. Shell, lot, East Hanover township, \$500; Harry E. Engelbert to George S. Beal, two-and-one-half-story brick, 3018 North Second street, consideration probably \$4,000; Adam Baumbach to David Levin, two-and-one-half-story, 309 Boas street, \$1,000; Amanda Davis to Ethel D. Kriser, lot, Royaltown, \$160; Harry P. Gramm to Alfred G. Eden, three three-story houses, 1203-05-07 Walnut street, \$1,000; Isaac N. Hershey to Ruth Matthews, lots, Perry township, \$1,000; Ida M. Milliken to Joseph H. Fite, lot, Swatara and Juniata streets, Dauphin, \$1,500; Christian W. Lynch to Harry C. Showalter, brick dwelling, 540 South Sixteenth street, \$1,000; John H. Lingle to W. S. Shell, lot, East Hanover township, \$500; Harry E. Engelbert to George S. Beal, two-and-one-half-story brick, 3018 North Second street, consideration probably \$4,000; Adam Baumbach to David Levin, two-and-one-half-story, 309 Boas street, \$1,000; Amanda Davis to Ethel D. Kriser, lot, Royaltown, \$160; Harry P. Gramm to Alfred G. Eden, three three-story houses, 1203-05-07 Walnut street, \$1,000; Isaac N. Hershey to Ruth Matthews, lots, Perry township, \$1,000; Ida M. Milliken to Joseph H. Fite, lot, Swatara and Juniata streets, Dauphin, \$1,500; Christian W. Lynch to Harry C. Showalter, brick dwelling, 540 South Sixteenth street, \$1,000; John H. Lingle to W. S. Shell, lot, East Hanover township, \$500; Harry E. Engelbert to George S. Beal, two-and-one-half-story brick, 3018 North Second street, consideration probably \$4,000; Adam Baumbach to David Levin, two-and-one-half-story, 309 Boas street, \$1,000; Amanda Davis to Ethel D. Kriser, lot, Royaltown, \$160; Harry P. Gramm to Alfred G. Eden, three three-story houses, 1203-05-07 Walnut street, \$1,000; Isaac N. Hershey to Ruth Matthews, lots, Perry township, \$1,000; Ida M. Milliken to Joseph H. Fite, lot, Swatara and Juniata streets, Dauphin, \$1,500; Christian W. Lynch to Harry C. Showalter, brick dwelling, 540 South Sixteenth street, \$1,000; John H. Lingle to W. S. Shell, lot, East Hanover township, \$500; Harry E. Engelbert to George S. Beal, two-and-one-half-story brick, 3018 North Second street, consideration probably \$4,000; Adam Baumbach to David Levin, two-and-one-half-story, 309 Boas street, \$1,000; Amanda Davis to Ethel D. Kriser, lot, Royaltown, \$160; Harry P. Gramm to Alfred G. Eden, three three-story houses, 1203-05-07 Walnut street, \$1,000; Isaac N. Hershey to Ruth Matthews, lots, Perry township, \$1,000; Ida M. Milliken to Joseph H. Fite, lot, Swatara and Juniata streets, Dauphin, \$1,500; Christian W. Lynch to Harry C. Showalter, brick dwelling, 540 South Sixteenth street, \$1,000; John H. Lingle to W. S. Shell, lot, East Hanover township, \$500; Harry E. Engelbert to George S. Beal, two-and-one-half-story brick, 3018 North Second street, consideration probably \$4,000; Adam Baumbach to David Levin, two-and-one-half-story, 309 Boas street, \$1,000; Amanda Davis to Ethel D. Kriser, lot, Royaltown, \$160; Harry P. Gramm to Alfred G. Eden, three three-story houses, 1203-05-07 Walnut street, \$1,000; Isaac N. Hershey to Ruth Matthews, lots, Perry township, \$1,000; Ida M. Milliken to Joseph H. Fite, lot, Swatara and Juniata streets, Dauphin, \$1,500; Christian W. Lynch to Harry C. Showalter, brick dwelling, 540 South Sixteenth street, \$1,000; John H. Lingle to W. S. Shell, lot, East Hanover township, \$500; Harry E. Engelbert to George S. Beal, two-and-one-half-story brick, 3018 North Second street, consideration probably \$4,000; Adam Baumbach to David Levin, two-and-one-half-story, 309 Boas street, \$1,000; Amanda Davis to Ethel D. Kriser, lot, Royaltown, \$160; Harry P. Gramm to Alfred G. Eden, three three-story houses, 1203-05-07 Walnut street, \$1,000; Isaac N. Hershey to Ruth Matthews, lots, Perry township, \$1,000; Ida M. Milliken to Joseph H. Fite, lot, Swatara and Juniata streets, Dauphin, \$1,500; Christian W. Lynch to Harry C. Showalter, brick dwelling, 540 South Sixteenth street, \$1,000; John H. Lingle to W. S. Shell, lot, East Hanover township, \$500; Harry E. Engelbert to George S. Beal, two-and-one-half-story brick, 3018 North Second street, consideration probably \$4,000; Adam Baumbach to David Levin, two-and-one-half-story, 309 Boas street, \$1,000; Amanda Davis to Ethel D. Kriser, lot, Royaltown, \$160; Harry P. Gramm to Alfred G. Eden, three three-story houses, 1203-05-07 Walnut street, \$1,000; Isaac N. Hershey to Ruth Matthews, lots, Perry township, \$1,000; Ida M. Milliken to Joseph H. Fite, lot, Swatara and Juniata streets, Dauphin, \$1,500; Christian W. Lynch to Harry C. Showalter, brick dwelling, 540 South Sixteenth street, \$1,000; John H. Lingle to W. S. Shell, lot, East Hanover township, \$500; Harry E. Engelbert to George S. Beal, two-and-one-half-story brick, 3018 North Second street, consideration probably \$4,000; Adam Baumbach to David Levin, two-and-one-half-story, 309 Boas street, \$1,000; Amanda Davis to Ethel D. Kriser, lot, Royaltown, \$160; Harry P. Gramm to Alfred G. Eden, three three-story houses, 1203-05-07 Walnut street, \$1,000; Isaac N. Hershey to Ruth Matthews, lots, Perry township, \$1,000; Ida M. Milliken to Joseph H. Fite, lot, Swatara and Juniata streets, Dauphin, \$1,500; Christian W. Lynch to Harry C. Showalter, brick dwelling, 540 South Sixteenth street, \$1,000; John H. Lingle to W. S. Shell, lot, East Hanover township, \$500; Harry E. Engelbert to George S. Beal, two-and-one-half-story brick, 3018 North Second street, consideration probably \$4,000; Adam Baumbach to David Levin, two-and-one-half-story, 309 Boas street, \$1,000; Amanda Davis to Ethel D. Kriser, lot, Royaltown, \$160; Harry P. Gramm to Alfred G. Eden, three three-story houses, 1203-05-07 Walnut street, \$1,000; Isaac N. Hershey to Ruth Matthews, lots, Perry township, \$1,000; Ida M. Milliken to Joseph H. Fite, lot, Swatara and Juniata streets, Dauphin, \$1,500; Christian W. Lynch to Harry C. Showalter, brick dwelling, 540 South Sixteenth street, \$1,000; John H. Lingle to W. S. Shell, lot, East Hanover township, \$500; Harry E. Engelbert to George S. Beal, two-and-one-half-story brick, 3018 North Second street, consideration probably \$4,000; Adam Baumbach to David Levin, two-and-one-half-story, 309 Boas street, \$1,000; Amanda Davis to Ethel D. Kriser, lot, Royaltown, \$160; Harry P. Gramm to Alfred G. Eden, three three-story houses, 1203-05-07 Walnut street, \$1,000; Isaac N. Hershey to Ruth Matthews, lots, Perry township, \$1,000; Ida M. Milliken to Joseph H. Fite, lot, Swatara and Juniata streets, Dauphin, \$1,500; Christian W. Lynch to Harry C. Showalter, brick dwelling, 540 South Sixteenth street, \$1,000; John H. Lingle to W. S. Shell, lot, East Hanover township, \$500; Harry E. Engelbert to George S. Beal, two-and-one-half-story brick, 3018 North Second street, consideration probably \$4,000; Adam Baumbach to David Levin, two-and-one-half-story, 309 Boas street, \$1,000; Amanda Davis to Ethel D. Kriser, lot, Royaltown, \$160; Harry P. Gramm to Alfred G. Eden, three three-story houses, 1203-05-07 Walnut street, \$1,000; Isaac N. Hershey to Ruth Matthews, lots, Perry township, \$1,000; Ida M. Milliken to Joseph H. Fite, lot, Swatara and Juniata streets, Dauphin, \$1,500; Christian W. Lynch to Harry C. Showalter, brick dwelling, 540 South Sixteenth street, \$1,000; John H. Lingle to W. S. Shell, lot, East Hanover township, \$500; Harry E. Engelbert to George S. Beal, two-and-one-half-story brick, 3018 North Second street, consideration probably \$4,000; Adam Baumbach to David Levin, two-and-one-half-story, 309 Boas street, \$1,000; Amanda Davis to Ethel D. Kriser, lot, Royaltown, \$160; Harry P. Gramm to Alfred G. Eden, three three-story houses, 1203-05-07 Walnut street, \$1,000; Isaac N. Hershey to Ruth Matthews, lots, Perry township, \$1,000; Ida M. Milliken to Joseph H. Fite, lot, Swatara and Juniata streets, Dauphin, \$1,500; Christian W. Lynch to Harry C. Showalter, brick dwelling, 540 South Sixteenth street, \$1,000; John H. Lingle to W. S. Shell, lot, East Hanover township, \$500; Harry E. Engelbert to George S. Beal, two-and-one-half-story brick, 3018 North Second street, consideration probably \$4,000; Adam Baumbach to David Levin, two-and-one-half-story, 309 Boas street, \$1,000; Amanda Davis to Ethel D. Kriser, lot, Royaltown, \$160; Harry P. Gramm to Alfred G. Eden, three three-story houses, 1203-05-07 Walnut street, \$1,000; Isaac N. Hershey to Ruth Matthews, lots, Perry township, \$1,000; Ida M. Milliken to Joseph H. Fite, lot, Swatara and Juniata streets, Dauphin, \$1,500; Christian W. Lynch to Harry C. Showalter, brick dwelling, 540 South Sixteenth street, \$1,000; John H. Lingle to W. S. Shell, lot, East Hanover township, \$500; Harry E. Engelbert to George S. Beal, two-and-one-half-story brick, 3018 North Second street, consideration probably \$4,000; Adam Baumbach to David Levin, two-and-one-half-story, 309 Boas street, \$1,000; Amanda Davis to Ethel D. Kriser, lot, Royaltown, \$160; Harry P. Gramm to Alfred G. Eden, three three-story houses, 1203-05-07 Walnut street, \$1,000; Isaac N. Hershey to Ruth Matthews, lots, Perry township, \$1,000; Ida M. Milliken to Joseph H. Fite, lot, Swatara and Juniata streets, Dauphin, \$1,500; Christian W. Lynch to Harry C. Showalter, brick dwelling, 540 South Sixteenth street, \$1,000; John H. Lingle to W. S. Shell, lot, East Hanover township, \$500; Harry E. Engelbert to George S. Beal, two-and-one-half-story brick, 3018 North Second street, consideration probably \$4,000; Adam Baumbach to David Levin, two-and-one-half-story, 309 Boas street, \$1,000; Amanda Davis to Ethel D. Kriser, lot, Royaltown, \$160; Harry P. Gramm to Alfred G. Eden, three three-story houses, 1203-05-07 Walnut street, \$1,000; Isaac N. Hershey to Ruth Matthews, lots, Perry township, \$1,000; Ida M. Milliken to Joseph H. Fite, lot, Swatara and Juniata streets, Dauphin, \$1,500; Christian W. Lynch to Harry C. Showalter, brick dwelling, 540 South Sixteenth street, \$1,000; John H. Lingle to W. S. Shell, lot, East Hanover township, \$500; Harry E. Engelbert to George S. Beal, two-and-one-half-story brick, 3018 North Second street, consideration probably \$4,000; Adam Baumbach to David Levin, two-and-one-half-story, 309 Boas street, \$1,000; Amanda Davis to Ethel D. Kriser, lot, Royaltown, \$160; Harry P. Gramm to Alfred G. Eden, three three-story houses, 1203-05-07 Walnut street, \$1,00