

COMMERCIALIZING ON PATRIOTISM

Reo Head Deplores Tendency of Some to Cash In On A National Duty.

"If you have noticed a pleasing absence of appeals to 'patriotism' in Reo automobile advertising, it is intentional," says General Manager Scott of the Reo Motor Car Company.

Owners of Any Type of Automobiles

can learn something about the latest development in air-cooled motor cars with all of the advanced engineering principles embodied in a car designed and built by Arthur H. Holmes, President of the Holmes Automobile Company, Canton, Ohio, an organization of men with long experience in air-cooled motor cars.

Mr. Holmes was formerly Vice-President and for seven years Chief Engineer of the Franklin Automobile Company. In the Holmes Company he has associated with him some of the most substantial industrial men of the Middle West.

Information and descriptive folder may be had at the show—care of the Hupmobile exhibit.

Holmes Philadelphia Company R. J. Church, Manager. 103 Market Street Harrisburg, Pa. Bell Phone 3504

agent one's activities in the interest of public welfare. "I have been astounded to note that some concerns that are manned by individuals who, in private life, would seem to be above such methods, have made the most flagrant abuses of the word 'patriotism' in this form."

"We Reo folk hope to do our part—if it were not for violation of what I have just said above, might specify how and in what directions we are and have been doing our part—but we do not feel that we are any more entitled to public patronage on that account."

Causes of Blow-Outs When outside wear or inside break in the fabric, due to bruises produces a comparatively weak place in a casing, the inside pressure causes a bulge in the location of the weak spot, and this spot is then exposed to more wear than the evened parts of the casing. Of course the blowout quickly follows. Strong interliners prevent this bulging making a slight depression at the worn spot in place of a bulge, and thus preventing excessive wear on the weak parts of the covering.

HOLMES CAR WILL BE SOLD HERE

New Air-Cooled Motor Car to Be With Hupmobile Agency

Arthur Holmes, designer of the Holmes car and president of the automobile company by that name, is proud of this new creation in the motor world. He drove his car recently from the factory at Canton, Ohio, to the New York show in a test trip of 594 miles.

The extraordinary rough roads also served as an acid test for the riding comfort of the car. Holmes says that it is entirely free from vibration, owing to the length of the wheel base, 126 inches. Yet, because of its balance and flexibility, the car negotiated with perfect safety the hairpin curves of Allegheny Mountain trails.

Andrew Redmond Will Move to New Quarters

Since the fire which completely destroyed the garage and warehouses of Andrew Redmond at Third and Boyd streets, Mr. Redmond has been occupying temporary offices at 1507 North Third street, where he has been endeavoring to keep in touch with the public and the users of Vim trucks and Chandler cars.

MOTOR CAR SHOW IS INSTRUCTIVE

Sales Manager Sills, of Chevrolet Company, Tells of Increasing Popularity

By W. C. SILLS General Sales Manager Chevrolet Motor Co. Automobile Show time is here again—show time with all its surprises. Show time with all the new models, improvements, innovations, in cars and accessories.

The interest is genuine, too, for the very good reason that the automobile means transportation, and transportation is important to people everywhere. It isn't too much to say that it is one of the next important items in life, so every man, woman and child in this country is interested in mechanical transportation.

Hoffman's Garage Is Well Heated

This winter has been exceptionally severe, as far as heat goes. It is a matter of concern, not only for private families, but for the business people as well. The coal question has been a trying one to everybody.

OVERLAND IN MANY MODELS

Including Willys-Knight, a Variety Is Offered to Choose From

The Willys-Overland exhibit of motorcars represented by the Overland-Harrisburg Company, furnishes a striking example of what has been accomplished by a few of the large manufacturers toward meeting the demands of the public.

Under classification of Light Sixes there is a five-passenger touring car at \$1,100, a three-passenger roadster at \$1,115, a three-passenger touring coupe at \$1,420 and a five-passenger touring sedan that sells for \$1,620.

Under classification of Light Sixes there is a five-passenger touring car at \$1,100, a three-passenger roadster at \$1,115, a three-passenger touring coupe at \$1,420 and a five-passenger touring sedan that sells for \$1,620.

The Willys Six class embodies three models—a touring car, a club six and a touring sedan. The touring car and club six sell for \$1,365, the touring sedan for \$2,045. In the order named they accommodate seven, four and six passengers, respectively.

The Willys-Knight division is divided into two groups—fours and eights. These are the models that are equipped with the famous sleeve valve engines which represent the last word in motor efficiency.

Three delivery wagons complete the Willys-Overland line—a light wagon of the express type at \$785, a light weight panel type at \$810 and a 1,200-pound express type at \$930.

Brakes Versus Tires Jamming on the brakes grinds the tires and wears them as nothing else does. Letting in the clutch quickly, so that the wheels spin before taking the road, has the same effect.

Twin Sixes, a Good Pair to Draw To



B. B. HARRINGTON Manager of the Packard Motor Car Co., Harrisburg Branch

Portage Tires Are Sold on a Guarantee

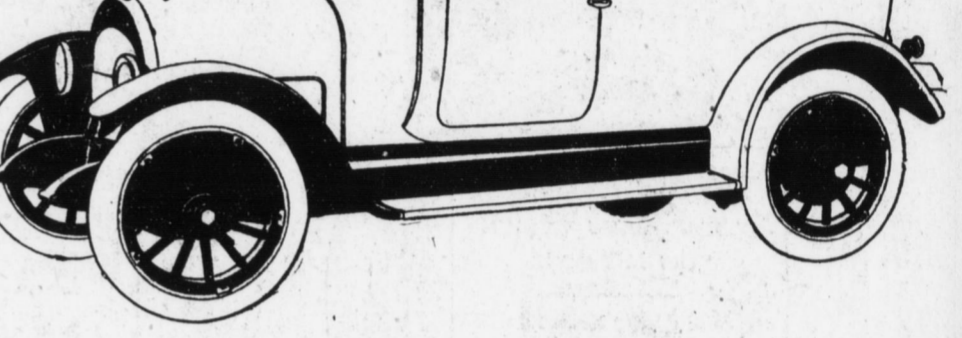
The Portage Tire for automobiles is guaranteed for 5,000 miles.

These tires are made in all sizes from the 3-inch up with both regular straight side or quick-detachable clincher bead. The bead has a wire cable base and is furnished with a floating flap. They are made in both smooth and non-skid treads.

Vim Truck and Chandler Service

A service station for Vim Trucks and Chandler Touring cars has been opened by the firm of Comp and Owens at the Palace Garage, 1715 N. Fourth street.

Mr. Owen are experienced auto mechanics and are very well versed on both these cars, having been in the employ of Andrew Redmond until the fire which destroyed the latter's garage.



Overland \$1240

The Thrift Car

This is America's most important winter—Don't let bad weather retard your efforts or impair your health!

Keep going at top-notch efficiency with this all-weather Small Sedan.

It is remarkable how increasingly the public approves it.

Fully equipped—106-inch wheelbase—large tires—staggered doors!

The busier you are the more you need it.

Appearance, Performance, Comfort, Service and Price

Light Four Model 90 Small Sedan Light Four Model 90 Small Sedan Light Four Model 90 Small Sedan

OVERLAND WILLYS-KNIGHT THE OVERLAND-HARRISBURG CO. OPEN EVENINGS Newport Branch—Opp. Railroad Station. 212-214 North Second Street Service Station and Parts Department, Twenty-Sixth and Derry Streets. BOTH PHONES York Branch—128-130 W. Market St.

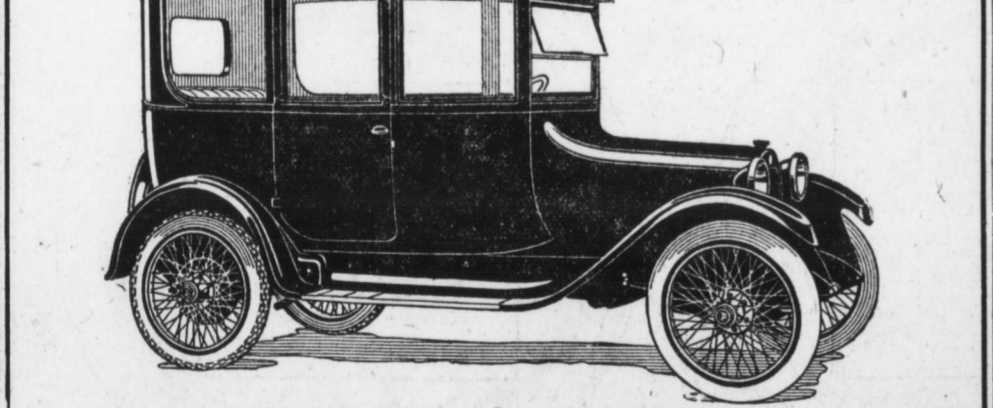
DODGE BROTHERS CLOSED CAR

The convertible sedan adjusts itself to all seasons and all weathers, and to every purpose—social or business—of the entire household.

It will pay you to examine this car at the show

The gasoline consumption is unusually low. The tire mileage is unusually high.

Sedan or Coupe, \$1350; Winter Touring Car or Roadster, \$1050. Touring Car, Roadster or Commercial Car, \$885. (All prices f. o. b. Detroit)



KEYSTONE MOTOR CAR COMPANY 57 to 103 S. Cameron St. Harrisburg, Pa. C. H. Barner, Manager

Strong on Super-Sixes and the Saxon Points



L. H. HAGERLING Manager of Hudson Sales Agency and Saxon Distributing Co.

General Auto and Machine Co. 125 South Cameron Street. Machine Work: Former patrons of J. D. Ferry will be given the same expert machine work as formerly. Complete equipment. Skilled workmen. Auto Repairs: Electric starting and lighting systems repaired, also magneto, carburetors and making of new parts for motors and general overhauling. Service station for Jeffery, Nash National and Interstate passenger cars, Jeffery, Nash and Standard trucks. Send your car to us. Dial 4154. Bell 4193