

**MAXWELL SHOWS  
NEW REFINEMENTS**

**Improvements Add to Value  
of Car Without Chang-  
ing One Model**

Besides several important improvements, which greatly enhance the value of the Maxwell there are many lesser refinements which add to the car's mechanical perfection, although there has been no fundamental change in the one model chassis.

In the Maxwell to-day the depth of the frame members has been increased from three to six inches. The former method of attaching the body to the frame by the use of brackets has been discarded and the body now rests directly upon the frame itself, which greatly strengthens the car. The elimination of the noisy splash guards, made possible by the change, is appreciated by motorists.

The wheelbase has been increased by half a foot this season, its length now being 109 inches. The body is also roomier.

Another improvement is the compensating underslung rear spring now used by the Maxwell. This type of spring is the same that has recently been adopted by many of the manufacturers of the highest priced cars.

The longer wheelbase, with the underslung compensating rear springs, not only improves the riding qualities wonderfully but makes for even greater "roadability"—a feature always noted in Maxwell cars.

There has been installed an improved strainer and sediment bulb in the gas line.

An electric lock controls the starter, making it impossible to mesh the motor and fly wheel while the motor is running. A heavier pinion is used in the rear axle. A larger gas tank has an improved gauge and filler pipe.

A single point switch is made possible by the use of a straight 12-volt battery, which assures a better battery service.

The minor mechanical improvements, however, are not the only new features in the one model Maxwell. The body-hood and cowl lines are extremely graceful this year.

The front and rear aprons, slanting windshield, deeper and softer upholstery, the improved quality of trimming material, wider running boards and fenders all combine to make one of the most attractive cars ever produced in its price class. The slanting windshield eliminates the back glare of lights from the rear.

The staggered seat roadster with its roomy rear compartment, the four-door sedan, the six passenger Berline, the luxurious coupe, and the all weather tops on touring and roadster models are all in keeping.

**A Pusher For Hudson,  
Saxon and Stewart Trucks**



M. K. THOMPSON  
District Manager For Hudson Sales Agency and Saxon Distributing Company.

**Case Automobiles Are  
Sold by C. L. Conover**

The Case six-cylinder automobiles that are being exhibited at the Auto Show by C. L. Conover cover a series of designs that meet most all requirements in automobiles.

The all-season model, a Springfield type body, with its artistic and substantial refinements, interior perfection and riding comforts, presents the distinctive appeal to the ultra-fashionable and sensible automobile owner. This car with the windows in place makes the interior as snug as a bug in a rug in wintertime and in summer with the windows lowered into the sides in a manner that makes it an attractive car for the open season.

In the Family model, the lines of this new Case Six seven-passenger car are distinctly beautiful. Seven passengers share the enjoyment of deeply tufted upholstery and Marshall cushion springs. Front seat comfort is one of the many features of the new Case Six.

Underlugs semi-elliptic springs put that convincing satisfaction into the full rear seats. Complete electrical equipment, including dash and tonneau lights; divided front seats; mahogany paneling in the cowl, and many other features make this one of the desirable touring cars.

The Sport model gives pleasurable riding to four passengers. Mechanically the same as the seven-passenger model, yet compact, the fascination having a party of two, three or four snugly seated, riding at a snail's pace or at its premier pace of sixty miles an hour, makes it enjoyable and comfortable. It is a practical model for the professional or business man, and meets the "class" requirements of the son or daughter.

**Packard Models More  
Attractive Than Ever**

The note of efficiency and utilitarian purpose is most evident in the car display chosen for the Harrisburg Automobile Show by Mr. B. B. Harrington, Local Manager of the Packard Motor Car Company. Special attention is directed to the two cars, one of which is a standard 3-35 Twin-Six seven-passenger touring car and the other a 3-25 six-passenger convertible Brougham. A truck is exhibited of two tons capacity representing the latest development of Packard's motor trucks. The car exhibit is complete with a Runabout with a Fleetwood body and a seven-passenger Limousine equipped with a Durham body.

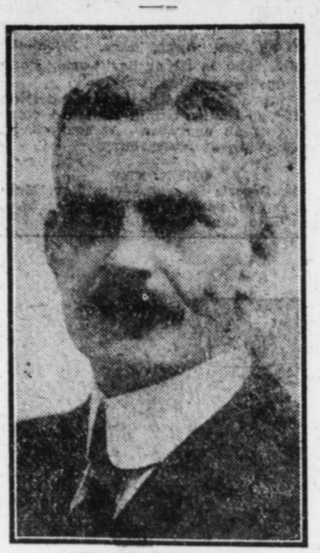
Mr. Harrington in referring to the new Twin-Six, says it embodies greater beauty than any preceding model, although it carries the hallmarks that have long distinguished Packard cars. In both open and enclosed cars the long low effect blended by fuselage lines is strikingly apparent. The powerful, smooth and economical performance of the Twin-Six motor have established the twelve-cylinder engine in favor of motorists. Economy of gasoline consumption, rapidity of pick up, wide range of ability in high gear, smoothness of action at all speeds and surplus power for hill climbing are identified with the new Twin-Six to an even greater degree than in any previous model.

In speaking of the general utility of the motor car to-day, Mr. Harrington relates that one of the chief reasons for the rapid adoption of the automobile, to go back a few years, was the inadequacy of the horse. Now that there is inadequate rail transportation, because of the war conditions, an even wider field of operation is offered to the passenger car. The decision of the Government to cut off drawing room cars from railroad trains, and to discontinue many passenger trains ordinarily would inconvenience the man of affairs. Yet the man with a capable and thoroughly dependable motor car need not be inconvenienced.

The necessity of the motor car is becoming generally recognized in an undisputable manner, as some one has said, eliminate the motor car to-day and we would retrace fifty years and our efficiency would be cut in half. It is particularly certain that much greater use is to be made of the highways for general passenger needs in the city to suburb and from city to city travel. With good roads the individual transportation service to be had by the means of the motor car can be made an actual means of saving time, money and energy.

Thirty-eight one-ton trucks in use day and night since July 1 have required only \$14.85 for repair parts, according to the Everett Auto Sales Company, of Columbus, Ohio, in a report to the Maxwell factory. Two of the trucks are engaged in the work of road building and have traversed 20,000 miles without one cent of expense to date.

**A Pioneer Auto Man  
Who is Always on the Job**



ANDREW REDMOND  
Distributor for Chandler Sixes, Oakland and Vim Trucks.

**Riverside Auto Co.  
Conducts Garage**

The Riverside Auto Company conduct a general garage at the rear of 1417-19-21 North Front street. This garage is well heated and equipped with all appliances for the convenience of the patrons. Air outlets are distributed throughout the main floor and the washstand is well lighted so as to accommodate night washing. Tires and accessories are sold and Mr. Bentley, the proprietor, gives personal supervision to all matters pertaining to the business.

**Lemoine Auto Shop  
Doing Large Business**

The Lemoine Auto Shop is gaining a large reputation for expert repair work, inasmuch as they are continually getting new business every day. This shop is equipped with all the latest machinery for any kind of automobile repair work and expert repair men on carburetor and ignition system look after any kind of trouble that happens in the daily grind of an auto.

**Claims the Honor of  
the Original Eight Car**



C. C. CRISPIN,  
Manager of the Crispin Motor Car Company, Cadillac Distributors.

**New Company Reopens  
the Ferry Repair Shop**

A general automobile and machine repair shop has been opened in the Ferry building in South Cameron street by the General Auto and Machine Company. C. A. Conrad and B. M. Bushey, both of them expert mechanics in the automobile business, are in charge. These two men were connected with the Bentz-Landis Company until opening in their new quarters.

"I have never had one penny of expense on my Maxwell engine," is the statement of R. E. Gamble, of Altus, Okla., who has run his car more than 3,200 miles. He says he has the same spark plugs in the car that came with it. Gamble is in the real estate business and uses the Maxwell to carry prospective land buyers about the country.

**Not the Biggest in Size  
But Some Big Hustler**



H. F. WILLOUGHBY  
Manager of the Velle-Harrisburg Co., who has put the Velle on the map in this territory.

**Sunshine Garage  
Does Repair Work**

All kinds of automobile repairing is done at the Sunshine Garage, 82 South Cameron street. Anything

from changing a spark plug to a complete general overhauling. One of the specialties is frame straightening. No matter how badly bent a frame may be or what shape it may be in, it can be straightened at this garage. Brazing and welding, radiator repairing, ignition and carburetor troubles are all looked after by expert repairmen.

**DON'T MISS SEEING  
OUR EXHIBIT  
AT THE AUTO SHOW**

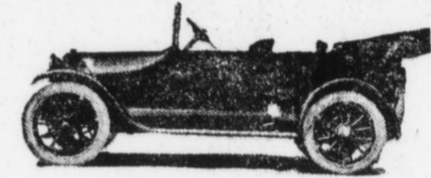
**Standard Auto Supplies Co.  
113 Market Street**

**ANNOUNCEMENT**

I wish to announce to the public and many patrons that I have taken the Agency for the

**STUDEBAKER MOTOR CARS  
BROCKWAY MOTOR TRUCKS For this Territory**

Our Service Station will be located for the present at Eleventh and Berryhill Streets



You can't go wrong when buying a Studebaker.

There are lots and lots of cars that sell at less and around our price—

But there is none that will compare with the STUDEBAKER AT ITS PRICE.

You like a smooth riding, comfortable car. You like power—durability—sturdy construction—YOU GET IT ALL IN STUDEBAKER.

The Merit and Proper balance of the Studebaker Cars are particularly adaptable to present road conditions. "It sticks to the road," making it an exceptionally safe car to ride in and comfortable.

You will be able to look 'em over At The Auto Show.

Don't fail to come see us—for some very interesting data is yours for the asking.

**Series 18---Cars, "Fours and Sixes"---Five and Seven Passenger---Closed and Open Types. For Every Purpose.**

Our Exhibit is on the Second Floor at the Auto Show, January 26th to February 2nd Inclusive

**SEE US AT THE SHOW--Second Floor**

**MARTIN L. MUMMA**  
DISTRIBUTOR  
Salesroom: 147 S. Cameron St.  
Service Station—Temporary Location, Eleventh and Berryhill Streets.

**Your Delivery Problems  
Are Best Solved By**

**Brockway**  
"The Right Way"  
MOTOR TRUCKS  
EFFICIENCY

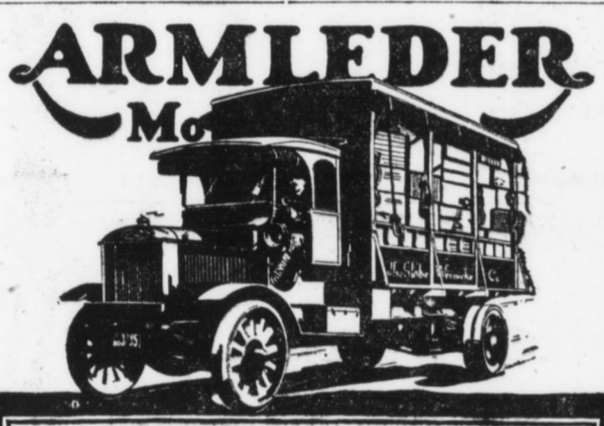
For the Coal Dealer, Excavator, Builder—  
Do Your Hauling with a Brockway

**BROCKWAY**  
"THE RIGHT WAY"

The BROCKWAY will meet your many requirements where a long and heavy haul is absolutely essential. The motor exerts the steady driving power of the locomotive and all the power is transmitted direct to the worm gear drive.

50 leading engineers of the U. S. in testing out various types of "drives," finally adopted the "WORM DRIVE" for use in all Government motor cars.

Models—1 ton to 3 1/2 tons. Come and see the BROCKWAY.



**YOU MUST SEE  
THE ARMLEDER**

Before you buy a motor truck you owe it to yourself to see and investigate the Armleder. It has many special features of design. They tell in performance. So does the liberal expenditure of the best material in the construction of the truck. These superiorities are easy to appreciate. You will see their great value at once. Let us explain. Let us refer you also to a number of owners who can tell you how the trucks perform.

Two-Ton Worm-Drive Three-and-a-half-ton

**Harrisburg Welding and Brazing Co.**  
SHOW ROOM—94-96 South Eleventh Street

**NASH AND STANDARD  
TRUCKS FOR EVERY PURPOSE**

**"USE MOTOR TRUCKS FOR SHORT HAULS"**

Is the word from Washington.

**Nash and Standard Trucks Release Freight Cars**

With this truth apparent our government is straining every effort to speed up the transportation of food, army equipment and munitions to France. The government has need for every available freight car.

"Use motor trucks for short hauls," is the word from Washington. That business houses are heeding that call is evidenced by the ever increasing demand for Nash and Standard Trucks.

The complete line of Nash and Standard Trucks meets the present situation squarely and have proved their ability to stand up under hardest service. The famous Nash Quad, which drives, brakes and steers on all four wheels, has a reputation that is worldwide.

The Standard superior construction endurance and efficiency has shown it equal to every occasion.

At your request we will show you just how completely Nash and Standard Trucks will solve the present-day hauling problems.

**SEE US AT THE AUTO SHOW**

**BENTZ-LANDIS AUTO CO.**  
DISTRIBUTORS  
1808 LOGAN AVE.

**SEE THE**

**Great JACKSON Valve in Head EIGHT**

**AT THE AUTO SHOW**