

REPUBLIC TRUCKS BUILT A CITY

Within Four Years Factory Has Become Largest Devoted to Motor Trucks

More than 25,000 Republic internal gear-drive trucks operating in every-line of business have carried the name of Alma, Michigan, into each of the forty-eight states and into every part of the world where motor trucks are used.

Republic trucks have also built a city. In four years the Republic Motor Truck Company's plant at Alma, Michigan, has become the largest in the world, exclusively devoted to the manufacturing of motor trucks. The factory buildings are the most modern type of steel and reinforced concrete, spread out over twenty-five acres. As the organizing genius of Frank W. Ruggles, president, summoned the finest ability to the increasing work, the city of Alma has grown with the enterprise. To-day it is one of the most rapidly developing cities of Michigan. Hand in hand it goes with the success of the Republic truck, and this is the reason why the greatest goodwill prevails between the city and its foremost industrial institution. There is saying in Alma that "everybody works for the Republic."

With the expansion of the business the company has taken into its own hands more and more of the manufacture of parts. Republic has its own motor plant, where powerful truck motors of exclusive Republic design are produced. It has its own armored radiator plant. It controls the internal gear drive, which has been such a factor in Republic pre-eminence. It produces many of the wide range of bodies with which the Republic meets every need of trucking.

The company has had a foremost part in the tremendous upbuilding of commerce, which the motor truck represents. The Republic has extended the radius of business everywhere for the manufacturer and dealer as well as the hauler. Now in the need of relieving railway congestion the Republic is the advance guard of the motor truck freight service. Already freight service between cities with trains of Republic trucks and trailers is becoming a fact. The day is not far distant when every highway will see motor truck freight trains as common as railway freight trains.

I. W. Dill has placed a great many of these trucks in this territory.

USING KEROSENE Good on Cold Days, But Tricky On Mild

A surprisingly large number of motor car owners are using kerosene in their radiators this winter, and many of them maintain that they are getting good results at a much lower cost than would be the case if they had alcohol solutions in the cooling system. Kerosene, of course, will not freeze, and will doubtless prove satisfactory for a time, but let a few mild days come along, and the kerosene advocates find their motors heating up quickly and smelling to heaven.

Kerosene will soon rot the rubber hose connections and set them leaking, but this may be obviated to a certain extent by taking off the connections and shellacking them inside. When they are replaced a good coating should be applied to the outside of the hose.

Developing a Growing Business



LUTHER G. MONN



JAMES C. MONN

The Monn Brothers are owners of the Star Garage and distributors of Crow-Elkhart cars and D-E motor trucks.

Internal Gear Drive Is His Truck Specialty



I. W. DILL

Distributor for Republic Trucks and Premier cars.

Drives Big 'Bus From Factory

That some automobile dealers do not allow such a thing as poor freight and transportation facilities to upset their plans for a busy season is demonstrated by the fact that the Baltimore Studebaker distributor last week secured a six-cylinder 16-passenger 'bus for a prospective customer in his territory by driving the machine over the roads from the Detroit factory. Maintaining an average schedule of 15 miles per hour, and driving only during the daytime, the big bus covered the distance of 619 miles in practically the same length of time required by a light touring car. The consumption of gasoline for the entire journey averaged 11 1/2 miles to the gallon.

NEW HUPMOBILE BEST OF SERIES

Light Weight and Special Carburetion Make For Low Fuel Consumption

With the comfort-loving American public in mind, the Hupp Motor Car Company has evolved the Hupmobile Series R "Comfort Car."

The new series Hup is the result of nearly two years' labor on the part of the factory, time spent in building, testing and rebuilding; months of experiment in laboratories and months of testing on the road under all possible conditions.

Everything about the new Hupmobile typifies comfort," said R. J. Church, manager of the local Hup distributing branch, yesterday. "Sitting at the wheel the motorist first remarks the deep, soft upholstery, real leather over real curled hair, supported by deep, resilient springs and an air cushion. The tip of the seats is luxurious. The tonneau is roomy and the back of the seat unusually high, affording the maximum of comfort. There are two more inches of room in the driving compartment of the 'Comfort Car' than in previous models.

A child can steer the new Hup. Its gear-shift lever—an exceptional feature—is twenty-four inches long, and the knob is just where the driver's hand naturally falls from the wheel. The foot levers are adjustable, the clutch especially soft operating, while the powerful leverage of the hand brake makes it operate with rare ease.

"These comfort advantages can be appreciated while the car is standing still," continued Mr. Church, "but the 'Comfort Car' really spreads herself when the road is reached. The pickup of the Series R is remarkable, without being jerky. At no speed, even in excess of fifty miles an hour, does the rider experience any unpleasant vibration. Operations that in other cars border on drudgery are easy for the 'Comfort Car' driver. The engine is simple and extremely accessible. The gas tank is easy to fill; oil is easily supplied. The 'one-man' top folds and tire economy."

Dynamic Exponent of Reo Trucks and Tractors



GEORGE G. MCFARLAND

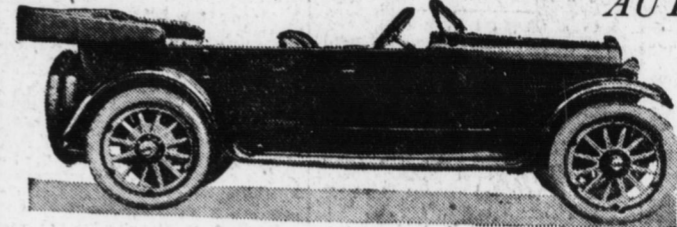
Manager of Harrisburg Automobile Company, distributors of Reo Passenger cars and trucks, Duplex Four-Wheel Drive, Cleveland Caterpillar tractors and Hubert trucks.

and unfolds easily, and with the curtains down provides almost closed car comfort.

"Comfort is not the one advantage of the Series R Hup, however," concluded Mr. Church. "Its appearance is pleasing. Low hung, with long, clean lines, its every outline suggests speed. Its performance is satisfying to the extreme—the Series R develops more power than any other Hup ever had. In durability the new Hupmobile lives up to all former standards. So far as that of inquired-about point, economy, is concerned, the 'Comfort Car' scores high. Because of our engineers' successful handling of the problem of carburetion the Hup can use with a low consumption even the poorer grades of commercial gasoline. Light weight also makes for fuel supplied. The 'one-man' top folds and tire economy."

CASE SIX The All Feature Car

At The AUTO SHOW



Far In Advance

In this, our latest and greatest triumph, Case Engineers have made no sacrifices in order to give a few features predominance. If ever a complete car was built, it is this Case Six.

To prove our claims, study this car and compare it. Go over the specifications.

You will think this a \$2,500 car, until acquainted with the price. It's values—especially during these times—are amazing.

5 or 7 Passenger or \$1875 The All-Seasons Model \$2375
Four Door Sport Model — Springfield Type

C. L. Conover 1334 Howard St.



The Sign of Mechanical Excellence the World Over

Has School for Automobile Mechanics

There is a big demand at the present time for all kinds of mechanics. Uncle Sam has issued a call for seven thousand that he needs at once, both in the aviation section and automobile supply trains. Skilled mechanics are getting scarce and the openings for them are increasing year by year.

The Auto Transportation School in North Cameron street, teaches all branches of the automobile business. Certain regular hours for class work are maintained, while between these hours a man can earn fair wages by working on repair work. The price of tuition is nominal and with the bright outlook for this grade of work it is well worth the time to look into for any young man who has not just decided what trade he will take up.

AUTOS FILL CHURCHES

Officials Claim Motor Cars Increase the Attendance

Membership in Methodist churches had the largest increase in its history during the past year, while the number of church edifices decreased. The change is attributed by the official statisticians of the Methodist Church to the use of automobiles. "Almost every family in the Middle West owns an automobile," he says in his annual report. "It is as easy to go 5 or 10 miles to church as it used to be to drive half a mile. A large number of people meet together, there is more enthusiasm, better business, better preaching and larger social life. The effect is to shut the door of the white meeting house on the hill, just as it is to close the door of the red school house at the cross roads."

GO HOME FOR LUNCH

In the old days the businessman loafed at his club, smoked, sat on his collar button and breathed foul air. To-day, it is difficult. Motoring home for lunch and the family, fresh air and exhilarating rest make the motor car a business and healthful essential.



FRONT-MARKET FROMAR MOTOR SUPPLY CO.

Service and Courtesy

"Nobody cares a rap how big we are or what our merchandise WAS worth, but what it sells for NOW"

We desire to announce a booth at the Harrisburg Auto Show, a place where you can have a comfortable seat and discuss the coming season's business in terms of price and quality. At our booth we will have experts from the following manufacturers, whose lines we distribute exclusively:

- Willard Storage Battery
- Rayfield Carburetors
- Hess-Bright Ball Bearings
- Bosch Magnetos & Lighting Systems
- Atwater Kent Ignition Systems
- Gemco Accessories
- Champion Spark Plugs
- Keystone Greases
- Henize-Springfield Ford Starters
- Perfect Handle Tools
- Johnson & Norwesco Lines

As a suggestion to our city and outside wholesale trade, be sure to fortify yourself against competition by placing your orders or placing future contracts with our representative, Mr. Ray E. Wildermuth, who will be in charge.



REPUBLIC TRUCKS



Republic Dispatch Complete \$895



With Solid Panel Body \$920

All Your Hauling All the Time At Less Cost

THIS is the Republic idea of Quality—proved by more than 10,000 Republic Internal Gear Trucks operating in every State of the Union.

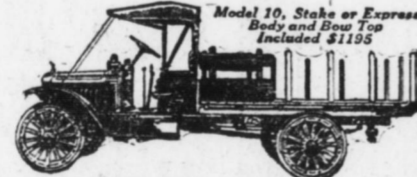
With these sturdy trucks goes our complete service. At your command every day and every hour of the day.

Five Republic Sizes

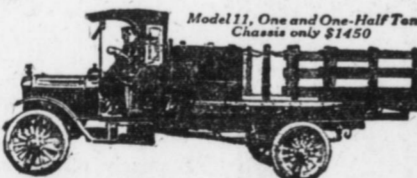
Republic Dispatch Model 9, maximum capacity 1500 lbs., furnished complete, express body with canopy top, side curtains, glass front, electric lights with generator and storage battery and electric horn, \$895; or with solid panel body, \$920; Model 10, 1-ton, with stake or express body and bow top, \$1195; Model 11, 1 1/2-ton chassis, \$1450; Model "A," 2-ton chassis, \$1885; Model "T," 3 1/2-ton Dreadnaught, \$2750.

Sold by I. W. DILL 1253 Mulberry St. Bridge HARRISBURG, PA.

Representing Republic Motor Truck Co., Inc., Alma, Mich.



Model 10, Stake or Express Body \$1195



Model 11, One and One-Half Ton Chassis only \$1450



Model A, Two Ton Chassis \$1885



Model T, Three and One-Half Ton Dreadnaught Chassis \$2750