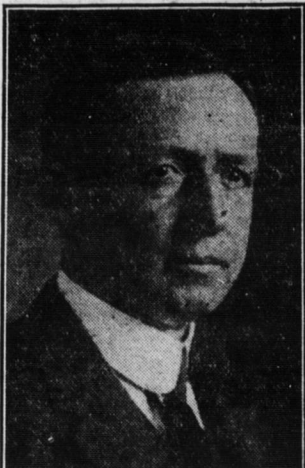


**Four-Cylinder and the
Air-Cooled Car For Him**

R. J. CHURCH

Manager of the Hupmobile Sales Corporation and the Hohns Philadelphia Company local branch.

**Believes Most Everyone
Can Afford a Ford**

HOWARD J. WILLIAMS

Manager of the Williams Motor Co., local distributors of Ford cars.

**Keeps the Essentials
That Keeps Car Going**

W. B. ZERBE

Manager of Myers Accessory House

**A Bevy of Chevrolets
In Fours and Eights**

PATRICK DRISCOLL

Manager of the Driscoll Auto Co.

**Angora Goats Furnish
Cadillac Upholstery**

It's a lucky soldier whose wife, mother, sister or sweetheart knits for him a sweater or a helmet of Angora wool. For the fine, long Angora makes the warmest, closest and softest of garments. Most women knitters know this, and most of them feel that, except for a very special bit of knitting, Angora wool is too costly for them to use.

But Angora is not too costly for the Cadillac Motor Car Company to use for upholstering the interiors of its enclosed cars. It forms the base of the mohair velvet which is found in Cadillac limousines, broughams, town cars and landaulets.

The Cadillac Company has found that no other material quite matches Angora mohair velvet in beauty, durability or cleanliness. None of the original luster of the long, silky wool is lost in the preparations which precede its weaving into fabrics. When the velvet is completed, it has a pile which it is impossible to crush flat. Hence all the wear comes on the ends of the individual fibers, and even in hard use is so slight that it is not perceptible. Pullman and other high class railroad cars have their chairs upholstered with mohair velvet. A car seat that had been in constant service for 24 years was recently exhibited by one of the railroads. Having a pile, dust settles into it, does not show on the surface, and at proper times and places can be removed by air blast, vacuum cleaner or brush.

DRIVING OVER ROUGH ROADS

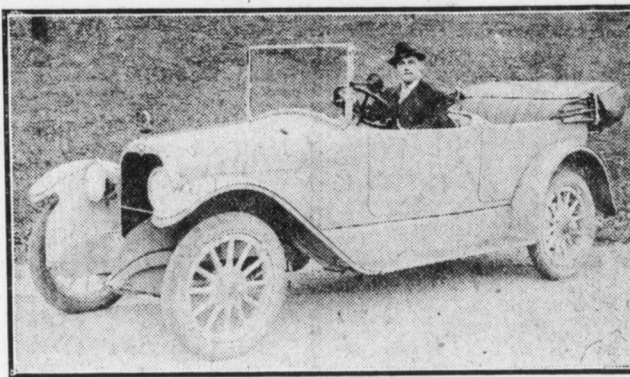
The natural inclination is for a driver to throw out the car's clutch in coasting or driving over rough roads. If the motor is allowed to keep pulling it keeps everything taut and lessens shocks and jars that the car gets through bumping over ruts.

Allies Have 172,125 Motors

According to an investigation conducted by the Japanese government, the entente allies have 172,125 motor vehicles in use by the armies. Of these, 39,000 are owned by England, 50,000 by France, 40,000 by Russia, 10,000 by Italy, 10,300 by Belgium, 1,700 by Rumania and 125 by Serbia. The central powers have approximately 121,050 machines, of which 100,000 are owned by Germany.

many, 30,000 by Austria-Hungary, 750 by Turkey and 300 by Bulgaria.

MOTHBALLS VS. GASOLINE
A trick which has been exposed in the Middle West is the placing of mothballs in the gasoline tank. The ammonia in the mothball deadens the life of the gasoline. Done for trickiness or spite, it is something not sanctioned in the best of motor circles.

The New American Six

C. A. Slough is the local distributor for the American Six touring car and Manager of the Harrisburg Sales Company at 203 S. Seventeenth street. In speaking of the American Sixes, Mr. Slough said: "The American Six touring cars are designed and built by the famous Louis Chevrolet. They are a compound and durable car built not only for one season but to withstand the hard usage of every-day running for a number of seasons. For comfort, they give entire satisfaction. This is due to the easy riding qualities made possible by the perfect distribution of weight, the low center of gravity, the self-sprung quality of the semi-elliptic springs and the long wheel base. The cushions have the right pitch; ample leg room both front and rear, means that no matter how far the trip the passengers will never complain of cramped position."

**Republic Truck
Tires on Sale**

The Republic Truck tire, which is being introduced to Harrisburg by the Good Service Tire Co., 1119 Market street, is a new kind of truck tire from the average. It has been developed through years of Laboratory experiments.

It is made of Prodim Rubber, which is an exclusive possession of the Republic Rubber Co. This process gives the tire wonderful heat resisting properties and make it almost immune to road cuts and chipping. It wears down evenly and smoothly like a piece of steel and so slowly that the life of the tire is greatly prolonged.

The process of making this tire differs from the ordinary tire inasmuch as it is built up ply after ply, from one continuous piece of rubber from the steel channel base to the desired height of the tire. This does away with the trouble of breaking or splitting at the splice for in this construction there is no splicing. These tires are made in different sizes to fit most all makes of trucks. They are on display at the salesroom of the Good Service Tire Co.

WORLD RECORD BY CHANDLER

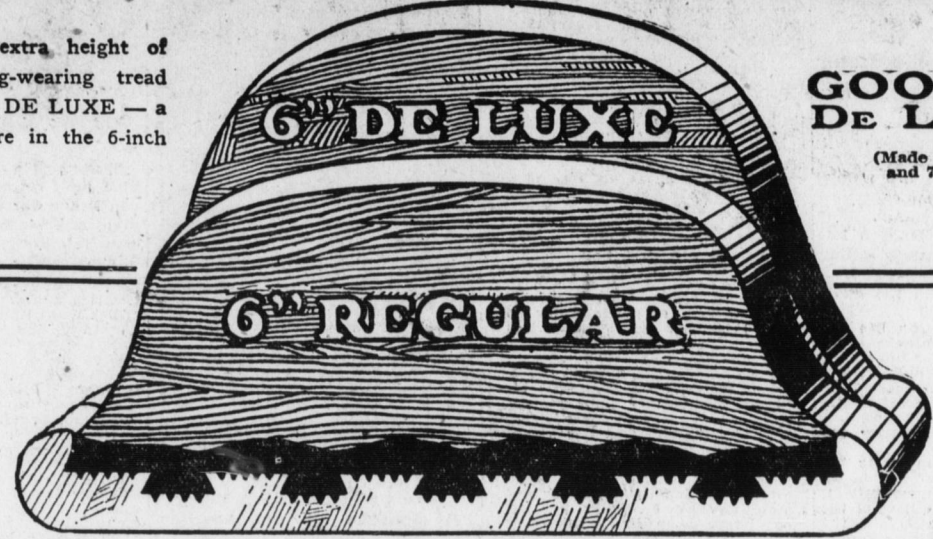
Six Has Made 94,000 Miles in 13 Months
What is believed to be the world's record for continuous driving is claimed on behalf of the Chandler Six by J. A. Van Horn, of Los Angeles, who has made 94,000 miles in thirteen months, or an average of 237 miles a day for that period. The car, which has been used for carrying newspapers from Los Angeles to Santa Barbara, has traveled as many miles in a little over a year as the average owner would in fifteen or twenty years. The daily run of 237 miles was made with a load of 1,000 to 1,500 pounds of newspapers or else with a

load of passengers and a trailer behind. In the entire thirteen months the daily trip was not missed once.

The car averaged fifteen miles to a gallon of gasoline, according to the careful record kept by Mr. Van Horn.

The only change in the car as shipped from the factory was its equipment with over-size cord tires. These tires have been giving an average of 12,000 miles to the set.

Note the extra height of resilient, long-wearing tread rubber in the DE LUXE — a full inch more in the 6-inch size.



**GOODRICH
DE LUXE TRUCK
TIRES**

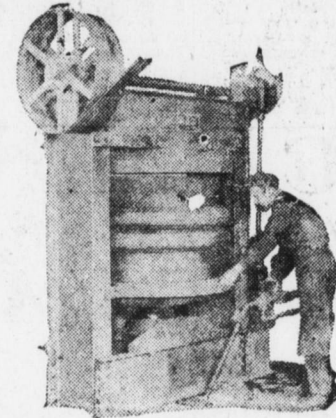
(Made in 5 in. 6 in. and 7 in. widths)

**What Two Big Harrisburg Truck Operators
Write Mr. A. H. Bailey Regarding De Luxe Tires**

"When it comes to service and satisfaction from truck tires, we can only think of GOODRICH. After trying various makes in competitive tests, GOODRICH DE LUXE has proved to be the most satisfactory in every way."

WITMAN-SCHWARZ CORP.

"We are exclusive Goodrich Truck Tire distributors in Harrisburg. We carry a complete stock of Goodrich De Luxe and Regular tires. At all times use them on your truck and get "Velvet Mileage."



"This 150-ton hydraulic press is typical of the modern equipment in our service station. We employ experienced workmen to apply YOUR tires. They do it easier and quicker than in any other place."

EVANS-BURNETT CO.

Specify **GOODRICH DE LUXE** as your next tire equipment

EUREKA WAGON WORKS, 614-618 North St., Harrisburg
A. H. BAILEY, Prop. Phone 28

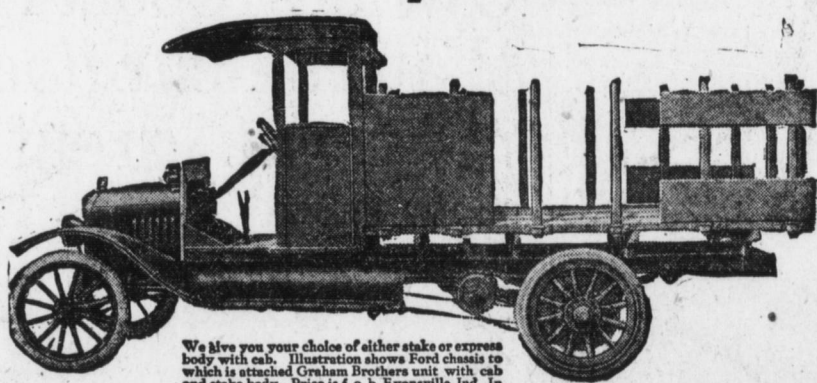
Miller Auto Co's Big Display at The Show

"Oldsmobile" "Haines" "Maxwell" "Maxwell ONE TON WORM DRIVE Truck" "Graham Truck Unit"

The Satisfaction of Completeness

GRAHAM BROTHERS
Complete Truck Unit **\$385**

See This Truck
At The
**AUTO
SHOW**



We give you your choice of either stake or express body with cab. Illustration shows Ford chassis to which is attached Graham Brothers unit with cab and stake body. Price is f.o.b. Evansville, Ind. In attaching the unit the Ford rear axles are unchanged.

You get all This for \$385 All Ready to Attach to a Ford Chassis

SIX BIG FEATURES

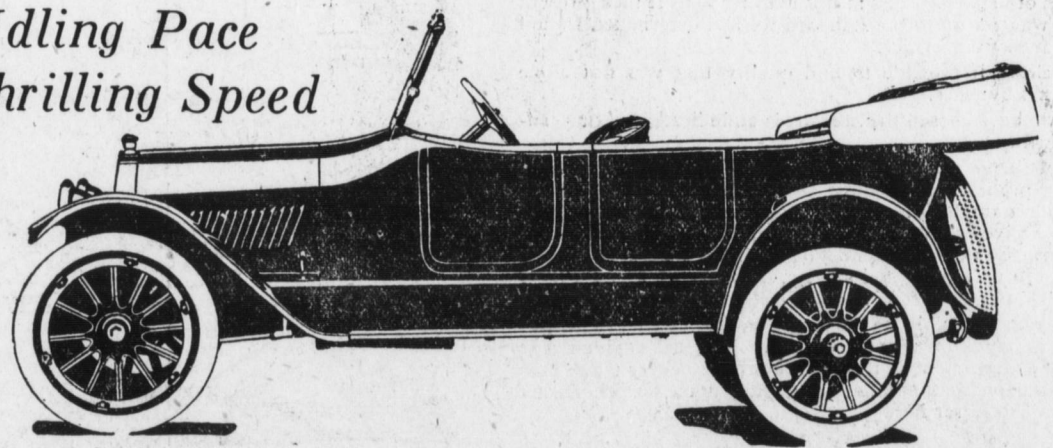
- I. No Comparison in Value—Cab and body included.
- II. Double Bearing Sprocket Drum that has never bent a Ford axle.
- III. Standardized Construction Throughout—Hess springs and axles; Prudden wheels, hubs and rims; Cullman sprockets; Bock tapered bearings; Diamond chains; Cotter key type, each link removable.
- IV. Frame, Spring and Axle Assembled Before Shipment.
- V. Ease of Attachment.
- VI. The Satisfaction of Completeness.

Come and See the "Job" Complete, You Can't Appreciate the Tremendous Value Until You Do

OLDSMOBILE Sets the Pace
20th Year

The Car of Double Character

An Idling Pace
A Thrilling Speed



In common with all Oldsmobile eight-cylinder models, its silent, simple and powerful perfected V-type motor amazes even the seasoned motorist by developing a two-phase power—

Idle along boulevards or thread-tangled traffic at a speed of one, two or twenty miles an hour, on a lean and gas-conserving mixture—then, with simply additional pressure on

the accelerator, a veritable burst of power is at your command for lightning pick-up, steepest hill or heaviest road. Investigate this marked achievement.

There are seven other models in the Oldsmobile line of eights and sixes—Touring Cars, Club Roadsters, Standard Roadsters, Sedans and Coupes.

MILLER AUTO CO., Inc.

BELL 4119
DIAL 5660

50-68 S. Cameron St.