

TRAINS STILL IN SERVICE ON PENNSYLVANIA LINES; IMPORTANT CONNECTIONS

Folks who must go travelling need not fear there will be no trains on the Pennsylvania. Notwithstanding nearly 200 have been removed from the schedule there is still enough to take care of war traffic according to the belief of local officials. Less trains will necessitate earlier rising in some cases, and makes a little longer wait when passengers miss a train.

Much has been said about the trains taken off. Those still on the schedule is what travellers are asking about. The new schedules issued last week and in effect Sunday tell all about the train movements, but time tables are a scarce article and railroad officials are conserving in printing bills.

Chief Clerk Helps For this reason, Harold W. Eppley, chief clerk at the Bureau of Information at the Pennsylvania railroad station, has compiled the following list of trains with the time of arrival and departure, naming those with parlor cars and sleepers. This information covers the Pennsylvania and shows connecting lines for various branches. He has given the number of each train as well as the time. Other schedules

in effect Sunday will be announced later. Trains still in service are as follows:

Trains For the East No. 10 leaves at 1:15 a. m. daily. No. 6 leaves at 2:05 a. m. daily. No. 4 leaves at 2:45 a. m. daily. No. 42 leaves at 4:32 a. m. daily; no coaches. No. 40 leaves at 4:37 a. m. daily; no coaches. No. 22, Manhattan Limited, leaves at 5 a. m. daily; no coaches. No. 32 leaves at 5:10 a. m. daily. No. 580 leaves at 5:13 a. m. daily. No. 580, Columbia Local, leaves at 6:45 a. m. daily except Sunday. No. 576, Buffalo Express, leaves at 6:55 a. m. daily. No. 626, Philadelphia Local, leaves at 7:45 a. m. daily except Sunday. No. 20, Keystone Express, leaves at 8:45 a. m. daily. No. 642 leaves at 9:10 a. m. Sunday only. No. 630 leaves at 9:25 a. m. daily except Sunday. No. 2, New York, leaves at 9:43 a. m. daily; no coaches; extra fare. No. 24, Seaboard Express, leaves at 10 a. m. daily. No. 580, Columbia Local, leaves at 10:30 a. m. Sunday only. No. 600 leaves at 11:58 a. m. daily except Sunday. No. 2, Pennsylvania Limited, leaves at 12:50 p. m. daily; no coaches; extra fare. No. 26, Commercial Express, leaves at 1:13 p. m. daily. No. 8 leaves at 2:10 p. m. daily. No. 44, New York Day Ex., leaves at 3:25 p. m. daily; this train carries two parlor cars, Pittsburgh to New York; Harrisburg to Philadelphia parlor car on train No. 34 Sundays has been withdrawn. No. 578 leaves at 3:40 p. m. daily except Sunday. No. 644 leaves at 3:55 p. m. Sunday only. No. 5570, Lancaster Local, leaves at 4:30 p. m. week days. No. 646, Columbia Local, leaves at 4:35 p. m. Sunday only. No. 628, Columbia Local, leaves at 5 p. m. week days. No. 570, Buffalo Express, leaves at 5:20 p. m. daily. No. 24 leaves at 7:05 p. m. daily. No. 604, Philadelphia Local, leaves at 7:20 p. m. week days.

No. 82, Philadelphia Local, leaves at 7:10 Sunday only. No. 46, Quaker City Express, leaves at 8:28 p. m. daily. No. 18 leaves at 11:50 p. m. daily. 8:15 a. m. week days. Trains Arrive From the East No. 19 arrives at 1:25 a. m. daily. No. 35 arrives at 1:55 a. m. daily. No. 3 arrives at 3:10 a. m. daily. No. 37 arrives at 3:22 a. m. daily; no coaches. No. 41, Atlantic City Local, arrives at 7:40 a. m. daily. No. 5961, Columbia Local, arrives at 8:15 a. m. week days. No. 625, Philadelphia Local, arrives at 11 a. m. week days. No. 648, Columbia Local, arrives at 11:05 a. m. week days. No. 12 arrives at 11:15 daily. No. 25, Metropolitan Express, arrives at 12:45 p. m. daily. No. 1, Main Line Express, arrives at 2:30 p. m. daily. No. 27, Commercial Express, arrives at 2:35 p. m. daily. No. 5569, Lancaster Local, arrives at 2:40 p. m. week days. No. 5, Pennsylvania Limited, arrives at 3:32 p. m. daily; no coaches. No. 603 arrives at 6:15 p. m. daily. No. 23, Panhandle Express, arrives at 6:45 p. m. daily. No. 21, Keystone Express, arrives at 6:55 p. m. daily. No. 627, Columbia Local, arrives at 7:05 p. m. daily. No. 5865, Columbia Local, arrives at 7:20 p. m. Sunday only. No. 651 arrives at 7:45 p. m. week days. No. 651 arrives at 8:35 p. m. Sunday only. No. 23, Manhattan Limited, arrives at 9:30 p. m. daily; no coaches. No. 575 arrives at 9:55 p. m. daily. No. 2, New York, arrives at 10:30 p. m. daily; no coaches. No. 7 arrives at 10:40 p. m. daily. No. 579 arrives at 11:05 p. m. daily. No. 9 arrives at 11:35 p. m. daily. Trains Nos. 626, 600, 578 and 604 connect at Conewago for Lebanon week days. Trains Nos. 576 and 82 connect at Conewago for Lebanon Sunday.

Trains For the North No. 577 leaves at 3 a. m. daily. No. 503 Northbound Accommodation leaves at 3:27 a. m. daily. No. 557 leaves at 4:20 a. m. daily; no coaches. No. 541, Williamsport Local, leaves at 5:50 a. m. week days. No. 561, Williamsport Local, leaves at 5:50 a. m. Sunday only. No. 8315, Lykens Local, leaves at 5:55 a. m. week days. No. 571, Buffalo Express, leaves at 11:35 a. m. daily. No. 515 leaves at 11:50 a. m. week days. No. 501, Main Line Express, leaves at 3:40 p. m. daily. No. 8317, Lykens Local, leaves at 5:50 p. m. week days. No. 631, Williamsport Express, leaves at 7:35 p. m. daily. No. 8315, Lykens Express, leaves at 10:20 p. m. daily. No. 579, Northbound Express, leaves at 11:20 p. m. daily. Trains Arrive From the North No. 506 arrives at 1:40 a. m. daily. No. 580, Philadelphia Express, arrives at 4:25 a. m. daily. No. 754, Washington Express, arrives at 5:20 a. m. daily. No. 576, Buffalo Express, arrives at 6:30 a. m. daily. No. 8310, Lykens Local, arrives at 8:55 a. m. week days. No. 630, Williamsport-Philadelphia Express, arrives at 9:15 a. m. week days. No. 500 arrives at 11:45 a. m. Sunday only. No. 554 arrives at 3:20 p. m. daily. No. 570, Buffalo Express, arrives at 5:18 p. m. daily. No. 562 arrives at 6:48 p. m. Sunday only. No. 500 arrives at 7:10 p. m. week days. No. 568 arrives at 10:50 p. m. daily. Trains No. 561 and 501 connect at Millersburg for Lykens Sunday only. Trains Nos. 503, 541 and 501 connect at Sunbury for Shamokin Branch week days. Trains Nos. 503 and 501 connect at Sunbury for Shamokin Branch Sunday only. Trains Nos. 503 and 515 connect at Sunbury for Bellefonte Branch week days. Trains Nos. 503 and 515 connect at Sunbury for Hazleton week days. Train No. 571 connects at Sunbury for Hazleton Sunday only. Trains Nos. 505, 515 and 631 connect at Sunbury for Wilkes-Barre and Scranton week days. Trains Nos. 561 and 631 connect at Sunbury for Wilkes-Barre Sundays. Trains Nos. 503, 541 and 501 connect at Northumberland for Wilkes-Barre and Scranton week days.

Trains Nos. 503 and 501 connect at Northumberland for Wilkes-Barre and Scranton Sunday. Trains For the South No. 990, local, leaves at 6:10 a. m. daily. No. 574, express, leaves at 5:50 a. m. daily. No. 976, express, leaves at 6:55 a. m. daily. No. 996, local, leaves at 7:30 a. m. Sunday only. No. 992, local, leaves at 7:50 a. m. week days. No. 530, express, leaves at 9:45 a. m. daily. No. 600, local, leaves at 11:55 week days. No. 502, express, leaves at 1:10 p. m. daily. No. 544, express, leaves at 3:50 p. m. daily. No. 998, local, leaves at 2:55 p. m. Sunday only. No. 994, local, leaves at 4:15 p. m. week days. No. 970, express, leaves at 5:30 p. m. daily. No. 560, local, leaves at 8:10 p. m. daily. No. 518, local, leaves at 11:54 p. m. daily.

Trains Arrive From the South No. 517 arrives at 1:25 a. m. week days. No. 503 arrives at 2:00 a. m. daily. No. 541 local, arrives at 7:30 a. m. daily. No. 991, local arrives at 10:45 week days. No. 997 arrives at 10:50 a. m. Sunday only. No. 971, express, arrives at 11:15 a. m. daily. No. 527 arrives at 2:25 p. m. daily. No. 505, express, arrives at 3:20 p. m. daily. No. 529 arrives at 6:40 p. m. daily. No. 995, local, arrives at 7:05 p. m. daily. No. 999, local, arrives at 8:50 p. m. Sunday only. No. 995, local, arrives at 9:40 p. m. week days. No. 91, express, arrives at 9:48 p. m. daily; no coaches. No. 975, express, arrives at 10 p. m. daily. No. 979, express, arrives at 10:53 p. m. daily. Trains No. 976 and 502 connect at York for Frederick week days. Trains Nos. 976 and 544 connect at York for Hanover and Frederick Sunday only. Trains Nos. 976, 502 and 970 connect at York for Hanover week days. The A. C. L. announces trains Nos. 87, 83 and 85 will leave Washington promptly, irrespective of connections. It is therefore urged that passengers reach Washington in time to afford connection via A. C. L.

Trains For the West No. 9, local, leaves at 12:05 a. m. daily; sleeper Harrisburg to Pittsburgh, open 10 p. m. No. 19 leaves at 1:35 a. m. No. 35, leaves at 2:15 a. m.; no coaches. No. 2 leaves at 2:30 a. m. No. 37 leaves at 3:42 a. m.; no coaches. No. 661, Altoona local, leaves at 5:15 a. m. No. 601 leaves at 8 a. m. No. 41, Altoona local, leaves at 8:05 a. m. No. 15 leaves at 11:40 a. m. No. 13, Fast Mail, leaves at 12:40 p. m. No. 25, Metropolitan Express, leaves at 12:55 p. m. No. 665, Altoona local, leaves at 1:30 p. m. No. 27, Commercial Express, leaves at 2:47 p. m. No. 1, Main Line Express, leaves at 2:50 p. m. No. 5, Pennsylvania Limited, leaves at 3:45 p. m.; no coaches. No. 667, Altoona local, leaves at 4:45 p. m. No. 21, Keystone Express, leaves at 7:10 p. m. No. 669, Altoona Local, leaves at 7:20 p. m. No. 23, Manhattan Limited, leaves at 9:39 p. m.; no coaches. No. 61 leaves at 9:55 p. m.; no coaches. No. 21, St. Louisan, leaves at 10:12 p. m.; no coaches. No. 7 leaves at 10:55 p. m. No. 6295, Mifflin Local, leaves at 11:12 p. m.

Trains Arrive From the West No. 10 due at 12:55 a. m. No. 6 due at 1:55 a. m. No. 4 due at 2:20 a. m. No. 49 arrives at 4:30 a. m.; no coaches. No. 42 due at 4:20 a. m.; no coaches. No. 52 due at 4:40 a. m.; no coaches. No. 22, Manhattan Limited, due at 4:46 a. m.; no coaches. No. 32 due at 5:02 a. m. No. 6292, Mifflin Local, due at 7:25 a. m. No. 20, Keystone Express, due at 8:38 a. m. No. 662, Altoona Local, due at 9 a. m. No. 20, The New Yorker, due at 9:35 a. m.; no coaches; extra fare. No. 34, Seaboard Express, due at 10 a. m. No. 600, Altoona local, due at 11:40 a. m. No. 2, Pennsylvania Limited, due at 12:40 a. m.; no coaches; extra fare. No. 26, Commercial Express, due at 1 p. m. No. 541, Altoona Local, due at 2:35 p. m. No. 8 due at 2:55 p. m. No. 44, New York City Express, due at 2:15 p. m. No. 604, Altoona Local, due at 6:03 p. m. No. 821, Altoona Local, due at 6:05 a. m. Sunday only. No. 24 due at 6:45 p. m. No. 666, Altoona Local, due at 8:45 p. m. No. 46, Quaker City Express, due at 9:18 p. m. No. 18 leaves at 11:30 p. m. Trains Nos. 801 and 1 connect at Duncannon with S. B. and W. R. R. daily except Sunday. Trains Nos. 601 and 1 connect at Port Royal with T. V. R. R. daily. Trains Nos. 3 and 1 connect at Tyrone with C. and C. Branch daily except Sunday. Trains Nos. 3 and 25 connect at Tyrone with C. and C. Branch Sunday only. Trains Nos. 3, 601 and 1 connect at Tyrone with D. E. V. R. R. daily. Trains Nos. 3, 15 and 1 connect at Huntingdon with H. and B. T. Mt. week days. Trains Nos. 3 and 1 connect at Huntingdon with H. and B. T. Mt. Sunday. Trains Nos. 3 and 25 connect at Toombs with Bedford Div. daily. Trains Nos. 601 and 665 connect at Mount Union with East Broad Tor R. R. week days only. Trains Nos. 3 and 15 connect at Bellwood with Bellwood Div. daily.

Trains Arrive From the West No. 10 due at 12:55 a. m. No. 6 due at 1:55 a. m. No. 4 due at 2:20 a. m. No. 49 arrives at 4:30 a. m.; no coaches. No. 42 due at 4:20 a. m.; no coaches. No. 52 due at 4:40 a. m.; no coaches. No. 22, Manhattan Limited, due at 4:46 a. m.; no coaches. No. 32 due at 5:02 a. m. No. 6292, Mifflin Local, due at 7:25 a. m. No. 20, Keystone Express, due at 8:38 a. m. No. 662, Altoona Local, due at 9 a. m. No. 20, The New Yorker, due at 9:35 a. m.; no coaches; extra fare. No. 34, Seaboard Express, due at 10 a. m. No. 600, Altoona local, due at 11:40 a. m. No. 2, Pennsylvania Limited, due at 12:40 a. m.; no coaches; extra fare. No. 26, Commercial Express, due at 1 p. m. No. 541, Altoona Local, due at 2:35 p. m. No. 8 due at 2:55 p. m. No. 44, New York City Express, due at 2:15 p. m. No. 604, Altoona Local, due at 6:03 p. m. No. 821, Altoona Local, due at 6:05 a. m. Sunday only. No. 24 due at 6:45 p. m. No. 666, Altoona Local, due at 8:45 p. m. No. 46, Quaker City Express, due at 9:18 p. m. No. 18 leaves at 11:30 p. m. Trains Nos. 801 and 1 connect at Duncannon with S. B. and W. R. R. daily except Sunday. Trains Nos. 601 and 1 connect at Port Royal with T. V. R. R. daily. Trains Nos. 3 and 1 connect at Tyrone with C. and C. Branch daily except Sunday. Trains Nos. 3 and 25 connect at Tyrone with C. and C. Branch Sunday only. Trains Nos. 3, 601 and 1 connect at Tyrone with D. E. V. R. R. daily. Trains Nos. 3, 15 and 1 connect at Huntingdon with H. and B. T. Mt. week days. Trains Nos. 3 and 1 connect at Huntingdon with H. and B. T. Mt. Sunday. Trains Nos. 3 and 25 connect at Toombs with Bedford Div. daily. Trains Nos. 601 and 665 connect at Mount Union with East Broad Tor R. R. week days only. Trains Nos. 3 and 15 connect at Bellwood with Bellwood Div. daily.

Trains Arrive From the West No. 10 due at 12:55 a. m. No. 6 due at 1:55 a. m. No. 4 due at 2:20 a. m. No. 49 arrives at 4:30 a. m.; no coaches. No. 42 due at 4:20 a. m.; no coaches. No. 52 due at 4:40 a. m.; no coaches. No. 22, Manhattan Limited, due at 4:46 a. m.; no coaches. No. 32 due at 5:02 a. m. No. 6292, Mifflin Local, due at 7:25 a. m. No. 20, Keystone Express, due at 8:38 a. m. No. 662, Altoona Local, due at 9 a. m. No. 20, The New Yorker, due at 9:35 a. m.; no coaches; extra fare. No. 34, Seaboard Express, due at 10 a. m. No. 600, Altoona local, due at 11:40 a. m. No. 2, Pennsylvania Limited, due at 12:40 a. m.; no coaches; extra fare. No. 26, Commercial Express, due at 1 p. m. No. 541, Altoona Local, due at 2:35 p. m. No. 8 due at 2:55 p. m. No. 44, New York City Express, due at 2:15 p. m. No. 604, Altoona Local, due at 6:03 p. m. No. 821, Altoona Local, due at 6:05 a. m. Sunday only. No. 24 due at 6:45 p. m. No. 666, Altoona Local, due at 8:45 p. m. No. 46, Quaker City Express, due at 9:18 p. m. No. 18 leaves at 11:30 p. m. Trains Nos. 801 and 1 connect at Duncannon with S. B. and W. R. R. daily except Sunday. Trains Nos. 601 and 1 connect at Port Royal with T. V. R. R. daily. Trains Nos. 3 and 1 connect at Tyrone with C. and C. Branch daily except Sunday. Trains Nos. 3 and 25 connect at Tyrone with C. and C. Branch Sunday only. Trains Nos. 3, 601 and 1 connect at Tyrone with D. E. V. R. R. daily. Trains Nos. 3, 15 and 1 connect at Huntingdon with H. and B. T. Mt. week days. Trains Nos. 3 and 1 connect at Huntingdon with H. and B. T. Mt. Sunday. Trains Nos. 3 and 25 connect at Toombs with Bedford Div. daily. Trains Nos. 601 and 665 connect at Mount Union with East Broad Tor R. R. week days only. Trains Nos. 3 and 15 connect at Bellwood with Bellwood Div. daily.

Trains Arrive From the West No. 10 due at 12:55 a. m. No. 6 due at 1:55 a. m. No. 4 due at 2:20 a. m. No. 49 arrives at 4:30 a. m.; no coaches. No. 42 due at 4:20 a. m.; no coaches. No. 52 due at 4:40 a. m.; no coaches. No. 22, Manhattan Limited, due at 4:46 a. m.; no coaches. No. 32 due at 5:02 a. m. No. 6292, Mifflin Local, due at 7:25 a. m. No. 20, Keystone Express, due at 8:38 a. m. No. 662, Altoona Local, due at 9 a. m. No. 20, The New Yorker, due at 9:35 a. m.; no coaches; extra fare. No. 34, Seaboard Express, due at 10 a. m. No. 600, Altoona local, due at 11:40 a. m. No. 2, Pennsylvania Limited, due at 12:40 a. m.; no coaches; extra fare. No. 26, Commercial Express, due at 1 p. m. No. 541, Altoona Local, due at 2:35 p. m. No. 8 due at 2:55 p. m. No. 44, New York City Express, due at 2:15 p. m. No. 604, Altoona Local, due at 6:03 p. m. No. 821, Altoona Local, due at 6:05 a. m. Sunday only. No. 24 due at 6:45 p. m. No. 666, Altoona Local, due at 8:45 p. m. No. 46, Quaker City Express, due at 9:18 p. m. No. 18 leaves at 11:30 p. m. Trains Nos. 801 and 1 connect at Duncannon with S. B. and W. R. R. daily except Sunday. Trains Nos. 601 and 1 connect at Port Royal with T. V. R. R. daily. Trains Nos. 3 and 1 connect at Tyrone with C. and C. Branch daily except Sunday. Trains Nos. 3 and 25 connect at Tyrone with C. and C. Branch Sunday only. Trains Nos. 3, 601 and 1 connect at Tyrone with D. E. V. R. R. daily. Trains Nos. 3, 15 and 1 connect at Huntingdon with H. and B. T. Mt. week days. Trains Nos. 3 and 1 connect at Huntingdon with H. and B. T. Mt. Sunday. Trains Nos. 3 and 25 connect at Toombs with Bedford Div. daily. Trains Nos. 601 and 665 connect at Mount Union with East Broad Tor R. R. week days only. Trains Nos. 3 and 15 connect at Bellwood with Bellwood Div. daily.

Trains Arrive From the West No. 10 due at 12:55 a. m. No. 6 due at 1:55 a. m. No. 4 due at 2:20 a. m. No. 49 arrives at 4:30 a. m.; no coaches. No. 42 due at 4:20 a. m.; no coaches. No. 52 due at 4:40 a. m.; no coaches. No. 22, Manhattan Limited, due at 4:46 a. m.; no coaches. No. 32 due at 5:02 a. m. No. 6292, Mifflin Local, due at 7:25 a. m. No. 20, Keystone Express, due at 8:38 a. m. No. 662, Altoona Local, due at 9 a. m. No. 20, The New Yorker, due at 9:35 a. m.; no coaches; extra fare. No. 34, Seaboard Express, due at 10 a. m. No. 600, Altoona local, due at 11:40 a. m. No. 2, Pennsylvania Limited, due at 12:40 a. m.; no coaches; extra fare. No. 26, Commercial Express, due at 1 p. m. No. 541, Altoona Local, due at 2:35 p. m. No. 8 due at 2:55 p. m. No. 44, New York City Express, due at 2:15 p. m. No. 604, Altoona Local, due at 6:03 p. m. No. 821, Altoona Local, due at 6:05 a. m. Sunday only. No. 24 due at 6:45 p. m. No. 666, Altoona Local, due at 8:45 p. m. No. 46, Quaker City Express, due at 9:18 p. m. No. 18 leaves at 11:30 p. m. Trains Nos. 801 and 1 connect at Duncannon with S. B. and W. R. R. daily except Sunday. Trains Nos. 601 and 1 connect at Port Royal with T. V. R. R. daily. Trains Nos. 3 and 1 connect at Tyrone with C. and C. Branch daily except Sunday. Trains Nos. 3 and 25 connect at Tyrone with C. and C. Branch Sunday only. Trains Nos. 3, 601 and 1 connect at Tyrone with D. E. V. R. R. daily. Trains Nos. 3, 15 and 1 connect at Huntingdon with H. and B. T. Mt. week days. Trains Nos. 3 and 1 connect at Huntingdon with H. and B. T. Mt. Sunday. Trains Nos. 3 and 25 connect at Toombs with Bedford Div. daily. Trains Nos. 601 and 665 connect at Mount Union with East Broad Tor R. R. week days only. Trains Nos. 3 and 15 connect at Bellwood with Bellwood Div. daily.

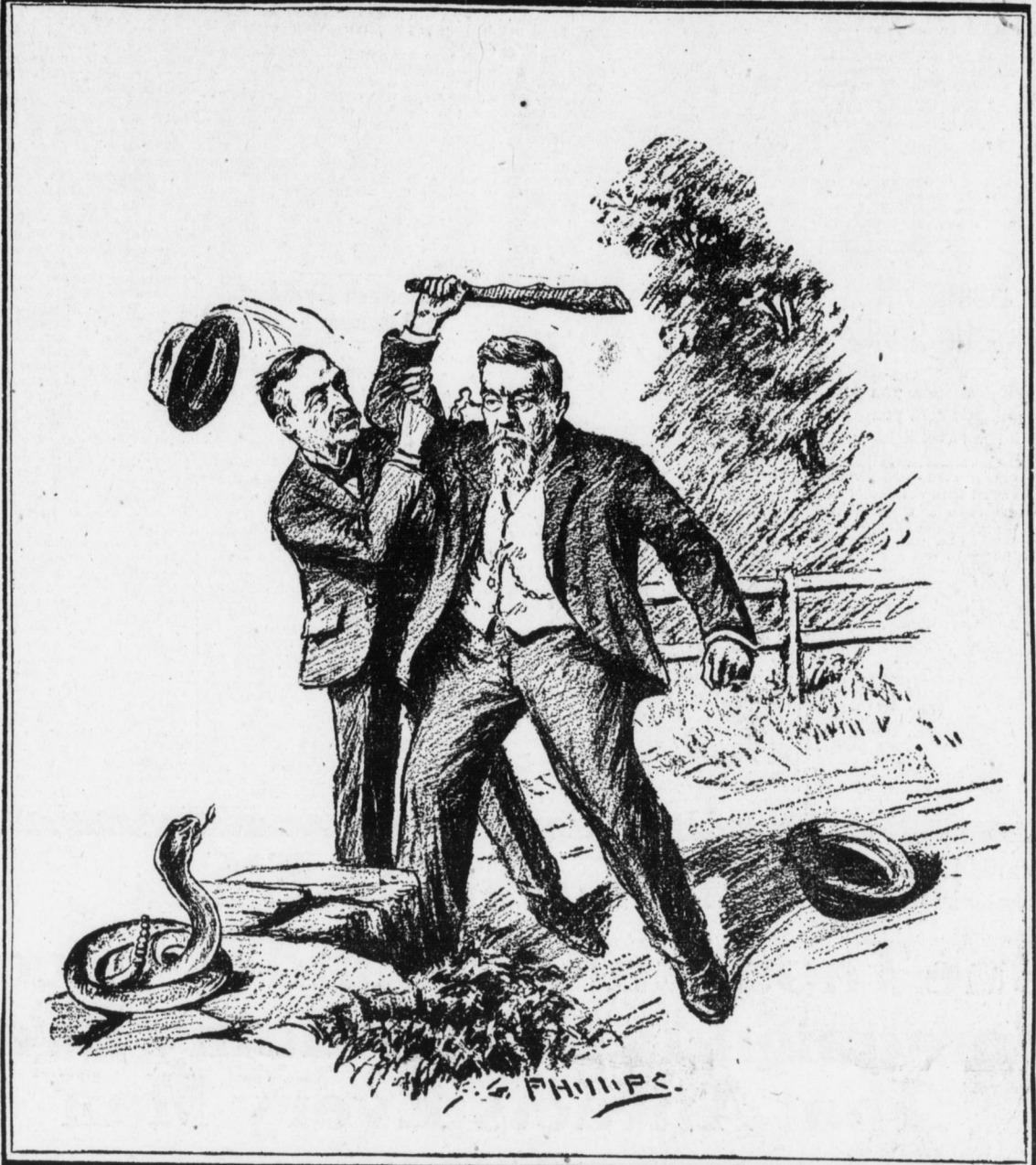
Trains Arrive From the West No. 10 due at 12:55 a. m. No. 6 due at 1:55 a. m. No. 4 due at 2:20 a. m. No. 49 arrives at 4:30 a. m.; no coaches. No. 42 due at 4:20 a. m.; no coaches. No. 52 due at 4:40 a. m.; no coaches. No. 22, Manhattan Limited, due at 4:46 a. m.; no coaches. No. 32 due at 5:02 a. m. No. 6292, Mifflin Local, due at 7:25 a. m. No. 20, Keystone Express, due at 8:38 a. m. No. 662, Altoona Local, due at 9 a. m. No. 20, The New Yorker, due at 9:35 a. m.; no coaches; extra fare. No. 34, Seaboard Express, due at 10 a. m. No. 600, Altoona local, due at 11:40 a. m. No. 2, Pennsylvania Limited, due at 12:40 a. m.; no coaches; extra fare. No. 26, Commercial Express, due at 1 p. m. No. 541, Altoona Local, due at 2:35 p. m. No. 8 due at 2:55 p. m. No. 44, New York City Express, due at 2:15 p. m. No. 604, Altoona Local, due at 6:03 p. m. No. 821, Altoona Local, due at 6:05 a. m. Sunday only. No. 24 due at 6:45 p. m. No. 666, Altoona Local, due at 8:45 p. m. No. 46, Quaker City Express, due at 9:18 p. m. No. 18 leaves at 11:30 p. m. Trains Nos. 801 and 1 connect at Duncannon with S. B. and W. R. R. daily except Sunday. Trains Nos. 601 and 1 connect at Port Royal with T. V. R. R. daily. Trains Nos. 3 and 1 connect at Tyrone with C. and C. Branch daily except Sunday. Trains Nos. 3 and 25 connect at Tyrone with C. and C. Branch Sunday only. Trains Nos. 3, 601 and 1 connect at Tyrone with D. E. V. R. R. daily. Trains Nos. 3, 15 and 1 connect at Huntingdon with H. and B. T. Mt. week days. Trains Nos. 3 and 1 connect at Huntingdon with H. and B. T. Mt. Sunday. Trains Nos. 3 and 25 connect at Toombs with Bedford Div. daily. Trains Nos. 601 and 665 connect at Mount Union with East Broad Tor R. R. week days only. Trains Nos. 3 and 15 connect at Bellwood with Bellwood Div. daily.

Trains Arrive From the West No. 10 due at 12:55 a. m. No. 6 due at 1:55 a. m. No. 4 due at 2:20 a. m. No. 49 arrives at 4:30 a. m.; no coaches. No. 42 due at 4:20 a. m.; no coaches. No. 52 due at 4:40 a. m.; no coaches. No. 22, Manhattan Limited, due at 4:46 a. m.; no coaches. No. 32 due at 5:02 a. m. No. 6292, Mifflin Local, due at 7:25 a. m. No. 20, Keystone Express, due at 8:38 a. m. No. 662, Altoona Local, due at 9 a. m. No. 20, The New Yorker, due at 9:35 a. m.; no coaches; extra fare. No. 34, Seaboard Express, due at 10 a. m. No. 600, Altoona local, due at 11:40 a. m. No. 2, Pennsylvania Limited, due at 12:40 a. m.; no coaches; extra fare. No. 26, Commercial Express, due at 1 p. m. No. 541, Altoona Local, due at 2:35 p. m. No. 8 due at 2:55 p. m. No. 44, New York City Express, due at 2:15 p. m. No. 604, Altoona Local, due at 6:03 p. m. No. 821, Altoona Local, due at 6:05 a. m. Sunday only. No. 24 due at 6:45 p. m. No. 666, Altoona Local, due at 8:45 p. m. No. 46, Quaker City Express, due at 9:18 p. m. No. 18 leaves at 11:30 p. m. Trains Nos. 801 and 1 connect at Duncannon with S. B. and W. R. R. daily except Sunday. Trains Nos. 601 and 1 connect at Port Royal with T. V. R. R. daily. Trains Nos. 3 and 1 connect at Tyrone with C. and C. Branch daily except Sunday. Trains Nos. 3 and 25 connect at Tyrone with C. and C. Branch Sunday only. Trains Nos. 3, 601 and 1 connect at Tyrone with D. E. V. R. R. daily. Trains Nos. 3, 15 and 1 connect at Huntingdon with H. and B. T. Mt. week days. Trains Nos. 3 and 1 connect at Huntingdon with H. and B. T. Mt. Sunday. Trains Nos. 3 and 25 connect at Toombs with Bedford Div. daily. Trains Nos. 601 and 665 connect at Mount Union with East Broad Tor R. R. week days only. Trains Nos. 3 and 15 connect at Bellwood with Bellwood Div. daily.

Trains Arrive From the West No. 10 due at 12:55 a. m. No. 6 due at 1:55 a. m. No. 4 due at 2:20 a. m. No. 49 arrives at 4:30 a. m.; no coaches. No. 42 due at 4:20 a. m.; no coaches. No. 52 due at 4:40 a. m.; no coaches. No. 22, Manhattan Limited, due at 4:46 a. m.; no coaches. No. 32 due at 5:02 a. m. No. 6292, Mifflin Local, due at 7:25 a. m. No. 20, Keystone Express, due at 8:38 a. m. No. 662, Altoona Local, due at 9 a. m. No. 20, The New Yorker, due at 9:35 a. m.; no coaches; extra fare. No. 34, Seaboard Express, due at 10 a. m. No. 600, Altoona local, due at 11:40 a. m. No. 2, Pennsylvania Limited, due at 12:40 a. m.; no coaches; extra fare. No. 26, Commercial Express, due at 1 p. m. No. 541, Altoona Local, due at 2:35 p. m. No. 8 due at 2:55 p. m. No. 44, New York City Express, due at 2:15 p. m. No. 604, Altoona Local, due at 6:03 p. m. No. 821, Altoona Local, due at 6:05 a. m. Sunday only. No. 24 due at 6:45 p. m. No. 666, Altoona Local, due at 8:45 p. m. No. 46, Quaker City Express, due at 9:18 p. m. No. 18 leaves at 11:30 p. m. Trains Nos. 801 and 1 connect at Duncannon with S. B. and W. R. R. daily except Sunday. Trains Nos. 601 and 1 connect at Port Royal with T. V. R. R. daily. Trains Nos. 3 and 1 connect at Tyrone with C. and C. Branch daily except Sunday. Trains Nos. 3 and 25 connect at Tyrone with C. and C. Branch Sunday only. Trains Nos. 3, 601 and 1 connect at Tyrone with D. E. V. R. R. daily. Trains Nos. 3, 15 and 1 connect at Huntingdon with H. and B. T. Mt. week days. Trains Nos. 3 and 1 connect at Huntingdon with H. and B. T. Mt. Sunday. Trains Nos. 3 and 25 connect at Toombs with Bedford Div. daily. Trains Nos. 601 and 665 connect at Mount Union with East Broad Tor R. R. week days only. Trains Nos. 3 and 15 connect at Bellwood with Bellwood Div. daily.

Fatal Luck to Kill a Snake

M. S. QUAY



My Four Years as Governor A Great Human Document

It lets no one escape—not even the members of his own family! If there was a progenitor who was illiterate, it tells you so frankly and characteristically.

HOW MANY PEOPLE KNOW that, like Napoleon, Quay was excessively superstitious, and to kill a snake was considered by him to bring about fatal luck?

HOW MANY PEOPLE KNOW about the remote family tie that made Quay, who ruled the politics of Pennsylvania with a rod of iron, and the late Governor such steadfast friends?

HOW MANY PEOPLE KNEW Governor Pennypacker's private estimate of Quay? Very few.

All this personal, intimate knowledge of the late Governor is being laid bare in his autobiography now being published in the EVENING PUBLIC LEDGER.

Enter your subscription now. Let us send it to your home, where you may keep it and preserve it for future reference. You will want to read it, not once, but many times.

Important!

Three ways in which to be absolutely certain of receiving your copy of the Evening Public Ledger:

- 1. Order your newsdealer to see that it is delivered to your home daily. 2. Reserve your Evening Public Ledger at your favorite newsstand or with your newsboy. 3. Write direct to the Evening Public Ledger (Box 1526, Philadelphia), and enter a six months' subscription to it now.

Do not delay to act on one of these three methods of procuring the daily installments of the greatest life story ever written by the man who lived it.

Already we are receiving complaints of friends who are confronted with "all sold out" at newsstands.

Evening Public Ledger

CYRUS H. K. CURTIS, PUBLISHER

Neglected Colds bring Pneumonia CASCARA QUININE The old family remedy—in tablet form—safe, sure, easy to take. No opiates—no unpleasant after effects. Cures colds in 24 hours—Grip in 3 days. Money back if fails. Get the genuine box with Red Top and Mr. HILL'S picture on 24 Tablets for 25c. At Any Drug Store

A SAFE FAMILY MEDICINE

Father John's Medicine is Best for Colds, Grip, Sore Throat and Stubborn Coughs and as a Body Builder. Guaranteed Free From Alcohol or Dangerous Drugs



Father John's Medicine is an old-fashioned family remedy—not a patent medicine, but the prescription of a learned doctor. It is free from opium, morphine, chloroform or poisonous drugs which are found in many of the patent medicines; it contains no alcohol or other stimulants. It is a Food Medicine, pure and wholesome. Father John's Medicine has had more than 60 years' success for colds, grip and throat troubles. It is invaluable as a tonic and body builder and restores weak and run-down systems to health and strength. It nourishes the system and makes flesh. We want to warn you against the danger in taking medicines which rely on stimulating or nerve-deadening drugs for their effect. They weaken the system and leave you exposed to disease, cause nervous prostration and a craving for drugs. Father John's Medicine is a safe medicine for all the family; for the children's as well as older people, because it does not contain alcohol or dangerous drugs in any form.

Thousands of Mothers Endorse Father John's Medicine.

ALL \$3.98 LADIES' LOUIS HEEL SHOES For \$3.48 Four Thousand Pairs of Ladies' Louis Heel Shoes at 50c Off

Late deliveries and delayed transportation has thrown on our hands a 4000 pairs surplus stock of Ladies' High Heel Shoes. Inventory time is near and they must be converted into cash. Bear in mind this stock is all new up-to-the-minute styles in high lace boots with long slender vamps, in a full range of sizes, widths B to D.