

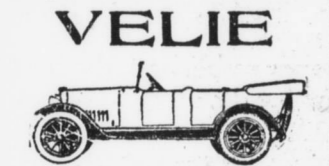
PROPER CARE OF ALL INNER TUBES

Goodrich Company Gives Suggestions That Will Give More Life to Tires

Ways and means of procuring the best service from inner tubes... an apturnent of the automobile's mechanism that is most neglected...



Miller Auto Co., Inc. 50-68 S. Cameron St. Bell 4119 Dial 3660



VELIE THE NEW 1918 TOURING MODEL Bigger, better, more power. Body strikingly different...



Willard Service is More than Battery Service

Our business is more than repairing and selling batteries. It's maintaining a continuous personal interest in you and your battery...

The Only Official Willard Service Station in Harrisburg Front-Market Motor Supply Co. 109 Market Street



HARD COAL RISE UP TO PRESIDENT; 45-CENT ADVANCE

New Scale Would Increase Miners' Pay 15 to 44 Per Cent.

Washington, Dec. 1.—The proposed increase in wage scales for anthracite miners were referred to President Wilson yesterday by Fuel Administrator Garfield...

The increases which, if sanctioned by the President, will boost the pay of Pennsylvania hard coal miners from 15 to 44 per cent...

Profound secrecy as to the recommendations concerning the increases made to the President...

By decree of the President, bituminous prices were recently increased to cover a new wage scale for soft coal miners...

It is generally believed that the forthcoming wage scale will be a pretty even compromise...

Americans Unfold Service Flag For Twelve Members

Newport, Pa., Dec. 1.—On Thanksgiving evening Newport Council No. 614, Junior Order of Americans, unfurled a large service flag...

\$18,000 a Year Will Be Spent on Two Children

Riverside, N. Y., Dec. 1.—Jean Stewart, 5 years old, and her sister, Miriam, a little older, are to have \$18,000 a year spent on them...

CHALMERS MODEL PROCLAIMED BEST

Distributors at Factory See Tests of Hot-Spot Engine Efficiency

Distributors from big cities scattered through forty states, of widely varying local conditions, have by letter, telegram and in a majority of cases on personal visits to the humming factory, declared the new current Chalmers the greatest engine and best automobile ever turned out...

Such praise is not founded on mere selling hopes and expectations but the story of the individual owner transmitted through respective Chalmers distributors an organization of thirty reliable businessmen...

Thousands of these cars are now being driven by motorists heretofore the owners of high priced automobiles. A great percentage are operating in the clutches of winter...

Reports without number are telling of the hot-spot engine in the coldest kind of weather, rainy nights and frosty mornings...

But even in cities, Chicago, for instance, where seasonal changes show an average variation of 100 degrees in the thermometer...

It is estimated that 95 per cent of owners run their cars with the throttle twenty-five per cent open, and when thus used, the prevailing slightest difference...

Consequently the thermometer may soar to 120 degrees in the shade or drop to zero, without the slightest effect on the great Chalmers engine...

Such a thing as a gauge or visible control is absolutely unnecessary, for the reason that the heat of the gas against the hot-spot is automatic and either increases or decreases, according to the power required...

There are two important investments necessary to success in the agricultural field according to Robert M. Mueller, a leading farmer residing in Dakota county...

The chief in importance is the purchase of a farm—a home for the family and the means of earning a livelihood...

"My horses were in much better shape, than for the past few years, for the fall plowing. The long hauls to the city in previous years, had worn-out my teams, which slowed up the work of the horses in the field..."

Mueller states that he has found the easy starting and the ease of the Maxwell truck has so lightened his hauling work that farm life appeals more and more to him...

"I consider the money paid for the Maxwell truck the best investment I made since the purchase of my farm," declares Mueller in his enthusiasm over the relief from wagon-riding weariness...

"I have not tried to test the Maxwell to its utmost capacity but know that I can go along with a load of a ton and a quarter or a ton and a half anywhere with perfect ease," said Mueller.

He alleges that the truck possesses sufficient reserve power and cites instances of the pulling force of the motor. Mueller runs his Maxwell truck on high gear, uphill, and slows down almost to a stop and then goes right along up the hill without shifting the gears.

213 CHILDREN AT DINNER. Two hundred and thirteen children from town enjoyed a bounteous Thanksgiving dinner, provided for them by the people of Waynesboro...

De Palma With Twin-Six Engine Breaks Record

Officials of the A. A. A. are making up their formal report on the record-breaking achievements of Ralph De Palma on the Sheephead Bay Speedway, November 16, in his aeroplane Twin Six car.

According to the figures which there is every reason to believe the A. A. A. will certify as official, De Palma averaged more than 109 miles an hour for the entire six hours, despite stops, for fire changes, oil and gas, aggregating more than 13 minutes.

De Palma's speed car is equipped with Packard Twin Six engine, aviation type, of 300 cubic inch displacement. Both engine and chassis were built in the Packard experimental shops. The records he broke were held by Dario Resta, Gene Chassagne and Lee K. Guinness...

The first hour De Palma covered 112.96 miles; second hour, 112.45; third hour, 109.85; fourth hour, 110.14; fifth hour, 107.14; sixth hour, 105.52.

Those who saw the steady grind, pronounced the run the most remarkable exhibition of speed and endurance on record and warmly congratulated De Palma.

De Palma's face was badly whipped by the 110 mile gale and his mechanical, Jimmy Stees, was exhausted and half-frozen at the end of the run. De Palma used Good-year tires which gave a splendid account of themselves. The right front tire went 447 miles before it was changed, and was by no means worn through.

This Timely Warning May Save You Money

"With so great a share of the nation's commercial burden to carry, the automobile, now more than ever before, must be kept running regardless of weather conditions," says P. Frisco, distributor of Studebaker cars for Harrisburg and vicinity.

The success of our arms abroad, and those of our Allies, depends much upon our ability to keep every channel open for the quick transportation of foodstuffs, munitions, etc. To relax our energy in this direction, because of the severity of the weather, would be literally giving aid and comfort to the enemy.

"Jack Frost is no respecter of persons—he will go out of his way to pay his respects to an automobile radiator. The water jackets of the cylinders are his especial favorites—it is no trouble whatever for him to quickly congeal the water therein. Not only is this Frost person to be feared because of the uncomfortably large repair bills he is capable of causing—but, most of all, he is liable to put the owner's car or truck out of commission entirely. Too much depends upon the motorcar these days to risk such an occurrence.

"Take warning now, Mr. Motorist, and provide yourself with a few gallons of denatured alcohol, and when the weather turns in a decided manner feel a little into the radiator, thus insuring yourself against damage that surely will come otherwise. The proportions depend upon the temperature. It will require a 5 per cent solution of alcohol to prevent freezing at 25 degrees, and a 22 per cent solution will take care of the water system down to zero. As low as 10 below the solution should be 30 per cent, and if the mercury happens to drop to 15 degrees below the percentage will be 35 per cent of alcohol, whereas ten more degrees below will require a 40 per cent solution. At present prices glycerine is out of the question as an anti-freezing agent.

"Cover your radiator when car is allowed to stand idle, and if it is to remain in the cold for any length of time let it face the wind and not back up under it. If left in the latter position the wind has a clear

Edgar Apperson Succeeds Brother as Manager

Edgar Apperson is now General Manager of the Apperson Bros. Automobile Co. of this city. He succeeds to the place so successfully filled since the organization of the company by his brother, Elmer, who has been forced to retire from active participation in the business because of failing health.

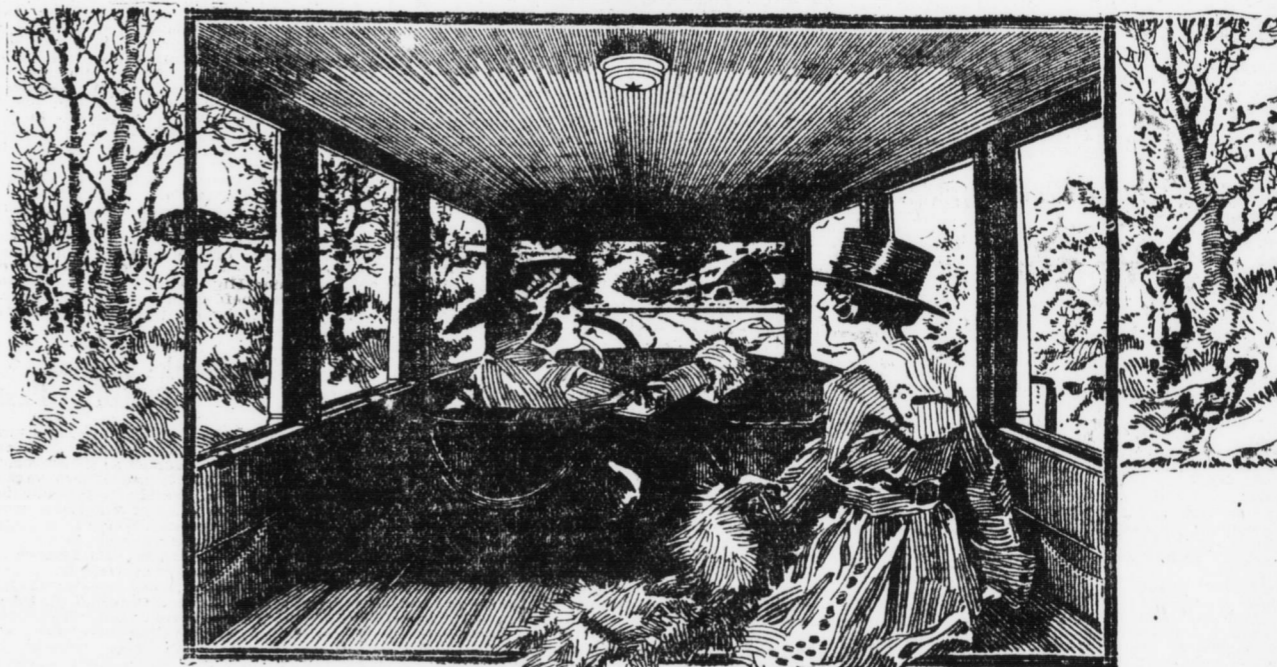
Edgar Apperson is one of the pioneer manufacturers of the automobile industry. He has been an official of the Apperson Company since its inception and has been largely instrumental in its rapid and substantial progress. Many of the early achievements of the industry are his. He it was who won the first speed contest given in America at the Charles Power Park Track, Boston, in September, 1897. In August, 1889, he made the first long overland journey to be taken by an American-made machine. This was from Kokomo to New York City, a distance of 900 miles. In February of the same year, he won the Pasadena-Alhambra Hill Climb at Los Angeles. Again in April, 1901, he drove the first car to run in a non-stop contest of over 100 miles.

Mr. Apperson needs no introduction to American sportsmen as he is a true lover of the great outdoors. Whether it be in the wilds of Northern Wisconsin, where he has his hunting camp, or on his ranch down in Arizona, his gun is always his constant companion. That the Apperson Company will not only continue to expand and prosper under his management, but will actually become a bigger factor than ever in the automobile industry, is what his friends—and they are legion—are predicting.

Advertisement for Pennsylvania Indemnity Exchange, Philadelphia, Reciprocal Automobile Insurance. Harrisburg Branch, Patriot Building. A. L. Hall, Manager. For the Car Owner Who Knows How to Save.

Advertisement for Wm. Strouse, a man's gift from a man's store. Includes an illustration of a man in a suit.

Advertisement for Overland Light Four Model 90 Small Sedan. Price \$1240. Includes an illustration of the car.



Get This Necessary Out-Door Home

CHRISTMAS offers a logical opportunity to equip your family with this all-weather, all-purpose Model 90 Overland Sedan.

There is a dome light in ceiling, three silk roller curtains, parcel pockets at both sides of rear seat, foot rail, windshield wiper, and nickel handles to close doors from the inside.

The entire top and sides are decorated with gray and black striped cloth. Every inch of the floor is covered with thick carpet to match the walls and ceiling.

The body is Brewster Green with black top. It has 4-inch tires, non-skid rear; 106-inch wheelbase; Auto-Lite electric starting and lighting, and vacuum fuel system.



THE OVERLAND-HARRISBURG CO., DIST. 212-214 North Second Street. Both Phones. Open Evening. Newport Branch Opp. Railroad Station. Service Station and Parts Department, 26th & Derry Sts. York Branch 128-130 W. Market St.