

New Superintendent Takes Charge of New Duties

Superintendent J. K. Johnston, of the Philadelphia division, Pennsylvania Railroad, assumed charge of his new duties to-day. He was formerly superintendent of the Tyrone division. The new official was given a hearty greeting by his office forces this morning.

Standing of the Crews

HARRISBURG SIDE Philadelphia Division—The 111 crew first to go after 4 o'clock; 118, 115, 129, 107, 101, 106, 120, 121, 127. Engineer for 111. Fireman for 120. Conductors for 129, 121. Fireman for 127. Brakemen for 115 (2), 106, 120, 127. Engineers up: A. K. Ctefy, Brod-scher, Baer, Geir, Grass, Gemmill, Sellers.

Middle Division—The 18 crew first to go after 1.30 o'clock; 20, 26, 23, 30, 16, 238. Preference crews: 7, 9, 4, 8. Firemen for 26 8. Conductor for 7. Brakemen up: Collier, Dougherty, Maurer, Bruel, Over, Reese, Menhan, Monroe. Middle Division—The 18 crew first to go after 1.30 o'clock; 20, 26, 23, 30, 16, 238.

ENOLA SIDE Philadelphia Division—The 238 crew first to go after 3.45 o'clock; 240, 237, 213, 228. Engineer for 238. Fireman for 237. Brakemen for 15, 23, 40. Brakemen up: Campbell, Grubb, Arnold, Dietrich. Middle Division—The 225 crew first to go after 12.01 o'clock; 240, 103, 216, 221, 229, 304. Conductor for 103.

YARD BOARD—Engineers up: Beaver, Essig, Myers, Boyle, Shiple, Revie, Ush, Bostdorf, Schiefer, Weigle. Firemen up: Yost, Kingler, Troup, Disinger, Young, Wright, Sellers, Fitzgerald, Bittner, Rathfon, Seward, Crist, Parker, Byers, Witman, Swomley, Baker, Mowery. Engineers for 4th 7C, 2nd 18C, 30C. Firemen for 2nd 7C, 23C, 30C.

PASSENGER DEPARTMENT Middle Division—Engineers up: Buck, Riley, Crum, Sparver, Miller, Keiser, Crane, Robley, Keane. Firemen up: Ayres, Lyter, Naylor, Dvysinger, Gates, Thompson, Huggins, Cornpren, Keller, Bealar, Herr, Beacham. Firemen for 1, 29. Philadelphia Division—Engineers up: Lindley, Gibbons, Pleam, Lippi, Kennedy. Firemen up: Hershey, Aulthouse, Shindler, Platt, Cover. Firemen for 578, 628.

THE READING The 8 crew first to go after 11 o'clock; 4, 9, 24, 22, 12, 18, 17, 1, 14, 72, 56, 52, 55, 61, 58, 54, 72, 59. Engineers for 55, 59, 61, 4, 18, 22. Firemen for 59, 68, 8, 6, 13, 24. Conductors for 17, 18. Firemen for 9, 18. Brakemen for 5, 61, 4, 3, 24. Engineers up: Wyre, Jacoby, Min-nich, Schuyler, Witlow, Hoffman, Clouder. Firemen up: Fitzgerald, Brougher, Tanner, Miller, Emtzer, Emerich, Duff, Bohner, White, Scheetz, Heck, man, McKee, and Harry. Conductors up: Hall, Ford, Patton, McCullough. Brakemen up: McLaughlin, McKie-vee, McCaslin, Snell, Siegfried, Hen-neman.

PHILADELPHIA DIVISION—The 111 crew first to go after 4 o'clock; 118, 115, 129, 107, 101, 106, 120, 121, 127. Engineer for 111. Fireman for 120. Conductors for 129, 121. Fireman for 127. Brakemen for 115 (2), 106, 120, 127. Engineers up: A. K. Ctefy, Brod-scher, Baer, Geir, Grass, Gemmill, Sellers.

Middle Division—The 18 crew first to go after 1.30 o'clock; 20, 26, 23, 30, 16, 238. Preference crews: 7, 9, 4, 8. Firemen for 26 8. Conductor for 7. Brakemen up: Collier, Dougherty, Maurer, Bruel, Over, Reese, Menhan, Monroe. Middle Division—The 18 crew first to go after 1.30 o'clock; 20, 26, 23, 30, 16, 238.

ENOLA SIDE Philadelphia Division—The 238 crew first to go after 3.45 o'clock; 240, 237, 213, 228. Engineer for 238. Fireman for 237. Brakemen for 15, 23, 40. Brakemen up: Campbell, Grubb, Arnold, Dietrich. Middle Division—The 225 crew first to go after 12.01 o'clock; 240, 103, 216, 221, 229, 304. Conductor for 103.

YARD BOARD—Engineers up: Beaver, Essig, Myers, Boyle, Shiple, Revie, Ush, Bostdorf, Schiefer, Weigle. Firemen up: Yost, Kingler, Troup, Disinger, Young, Wright, Sellers, Fitzgerald, Bittner, Rathfon, Seward, Crist, Parker, Byers, Witman, Swomley, Baker, Mowery. Engineers for 4th 7C, 2nd 18C, 30C. Firemen for 2nd 7C, 23C, 30C.

PASSENGER DEPARTMENT Middle Division—Engineers up: Buck, Riley, Crum, Sparver, Miller, Keiser, Crane, Robley, Keane. Firemen up: Ayres, Lyter, Naylor, Dvysinger, Gates, Thompson, Huggins, Cornpren, Keller, Bealar, Herr, Beacham. Firemen for 1, 29. Philadelphia Division—Engineers up: Lindley, Gibbons, Pleam, Lippi, Kennedy. Firemen up: Hershey, Aulthouse, Shindler, Platt, Cover. Firemen for 578, 628.

THE READING The 8 crew first to go after 11 o'clock; 4, 9, 24, 22, 12, 18, 17, 1, 14, 72, 56, 52, 55, 61, 58, 54, 72, 59. Engineers for 55, 59, 61, 4, 18, 22. Firemen for 59, 68, 8, 6, 13, 24. Conductors for 17, 18. Firemen for 9, 18. Brakemen for 5, 61, 4, 3, 24. Engineers up: Wyre, Jacoby, Min-nich, Schuyler, Witlow, Hoffman, Clouder. Firemen up: Fitzgerald, Brougher, Tanner, Miller, Emtzer, Emerich, Duff, Bohner, White, Scheetz, Heck, man, McKee, and Harry. Conductors up: Hall, Ford, Patton, McCullough. Brakemen up: McLaughlin, McKie-vee, McCaslin, Snell, Siegfried, Hen-neman.

PHILADELPHIA DIVISION—The 111 crew first to go after 4 o'clock; 118, 115, 129, 107, 101, 106, 120, 121, 127. Engineer for 111. Fireman for 120. Conductors for 129, 121. Fireman for 127. Brakemen for 115 (2), 106, 120, 127. Engineers up: A. K. Ctefy, Brod-scher, Baer, Geir, Grass, Gemmill, Sellers.

Middle Division—The 18 crew first to go after 1.30 o'clock; 20, 26, 23, 30, 16, 238. Preference crews: 7, 9, 4, 8. Firemen for 26 8. Conductor for 7. Brakemen up: Collier, Dougherty, Maurer, Bruel, Over, Reese, Menhan, Monroe. Middle Division—The 18 crew first to go after 1.30 o'clock; 20, 26, 23, 30, 16, 238.

ENOLA SIDE Philadelphia Division—The 238 crew first to go after 3.45 o'clock; 240, 237, 213, 228. Engineer for 238. Fireman for 237. Brakemen for 15, 23, 40. Brakemen up: Campbell, Grubb, Arnold, Dietrich. Middle Division—The 225 crew first to go after 12.01 o'clock; 240, 103, 216, 221, 229, 304. Conductor for 103.

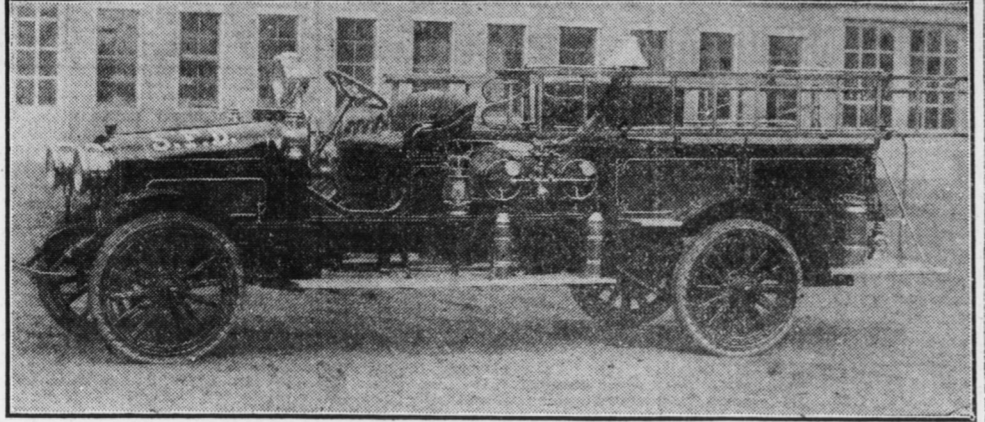
YARD BOARD—Engineers up: Beaver, Essig, Myers, Boyle, Shiple, Revie, Ush, Bostdorf, Schiefer, Weigle. Firemen up: Yost, Kingler, Troup, Disinger, Young, Wright, Sellers, Fitzgerald, Bittner, Rathfon, Seward, Crist, Parker, Byers, Witman, Swomley, Baker, Mowery. Engineers for 4th 7C, 2nd 18C, 30C. Firemen for 2nd 7C, 23C, 30C.

PASSENGER DEPARTMENT Middle Division—Engineers up: Buck, Riley, Crum, Sparver, Miller, Keiser, Crane, Robley, Keane. Firemen up: Ayres, Lyter, Naylor, Dvysinger, Gates, Thompson, Huggins, Cornpren, Keller, Bealar, Herr, Beacham. Firemen for 1, 29. Philadelphia Division—Engineers up: Lindley, Gibbons, Pleam, Lippi, Kennedy. Firemen up: Hershey, Aulthouse, Shindler, Platt, Cover. Firemen for 578, 628.

THE READING The 8 crew first to go after 11 o'clock; 4, 9, 24, 22, 12, 18, 17, 1, 14, 72, 56, 52, 55, 61, 58, 54, 72, 59. Engineers for 55, 59, 61, 4, 18, 22. Firemen for 59, 68, 8, 6, 13, 24. Conductors for 17, 18. Firemen for 9, 18. Brakemen for 5, 61, 4, 3, 24. Engineers up: Wyre, Jacoby, Min-nich, Schuyler, Witlow, Hoffman, Clouder. Firemen up: Fitzgerald, Brougher, Tanner, Miller, Emtzer, Emerich, Duff, Bohner, White, Scheetz, Heck, man, McKee, and Harry. Conductors up: Hall, Ford, Patton, McCullough. Brakemen up: McLaughlin, McKie-vee, McCaslin, Snell, Siegfried, Hen-neman.

STEELTON AND NEARBY TOWNS

PICTURE OF STEELTON'S NEW COMBINATION TRUCK



TEACHERS TALK ON CONSERVATION

Prof. McGinnes Issues Notice to Instructors in Regard to Speeches Before Hallowe'en

Pupils Asked Not to Throw Grain

In the spirit of food conservation, teachers will urge upon the pupils the importance of refraining from throwing grain on streets and elsewhere on Hallowe'en.

Businessmen Claim That Street Is in Bad Shape

Businessmen are complaining about the deplorable condition of Trewick street, the main tributary to the West Side. All businesshouse vehicles are compelled to use this street to get freight, as both freight stations are located on the West Side.

LUTHERAN CHURCH NOTES

Members of the Men's Bible Class, of St. John's Lutheran Church, will speak on Wednesday evening, "Ninety-five Theses," a reformation subject.

JOINT MEETING

A joint meeting of the Municipal League and Businessmen's Association, will be held this evening. The proposition of organizing a body of home guards will be taken up.

MIDDLETOWN

Middletown Expects to Exceed Its Quota

The quota of the Liberty Loan of \$125,000 has been reached and from all reports will exceed this amount. It is expected and the meeting to be held on Tuesday evening in the Council chamber, that the committees will make their full reports and it will reach the \$150,000 mark.

Steelton Snapshots

Speeders Fined—Two automobile speeders were fined \$5 each by Burgess Wigfield Saturday night for violating the borough traffic ordinance.

They Gave This Run-Down Man Vinol

Sheboygan, Wis.—"I was all 'fagged out,' run down, no appetite, nervous, sleepless nights and drowsy during the day, and was not fit to work. A friend told me to take Vinol. I did so, and can now eat three square meals a day. I sleep well, am alert, active, strong and well and have gained eleven pounds."—A. W. Higby, Sheboygan, Wis.

Steelton Personal

Alfred and Edgar McNear, sons of B. F. McNear, Sr., stationed at Camp Meade, returned to camp this morning after being home since Friday. Miss Jessie Wells, of Weilsburg, West Virginia, was a week-end visitor at the McNear residence.

Steelton Personal

Benjamin F. Brandt, of Camp Meade, spent the weekend at his home here. Mrs. Levi H. Still, 20 South Second street, is the guest of Mr. and Mrs. O. N. Keen, of Camp Meade.

Steelton Personal

Mrs. Levi H. Still, 20 South Second street, is the guest of Mr. and Mrs. O. N. Keen, of Camp Meade. Lieutenant Arthur Miller, stationed at Camp Meade, was the guest Saturday of his parents, Mr. and Mrs. W. A. Miller, South Second street.

EXPECT TRUCKS IN TWO WEEKS

Three Combination Machines Are For East End, Hygienic and West Side

Big Record in Loan Campaign

Steelton's Drive Closes at Noon, After Raising \$800,000

School Teachers Buy Forty Liberty Bonds

Teachers in the borough schools did their bit in raising Steelton's Liberty Loan. Last week forty Liberty bonds were purchased by the teachers amounting to over \$3,000.

Garbage Truck Is Placed in Service

Steelton's two and one-half-ton garbage truck was put in service late Saturday afternoon. It was delivered by the Bethlehem Company and placed in service at once.

Associated Charities in Need of Clothing

An appeal for clothing made by the Associated Charities last week did not bring very good results. Some clothing was donated to the association but much more is needed.

Lieutenant McEntee Arrives in France

T. T. McEntee, borough councilman and superintendent of the open hearth department of the local steel plant, received a cablegram Saturday telling of the safe arrival in France of his son, Lieutenant Bernard McEntee.

Hoffer Mill Ruins Are Still Smouldering

The ruins of the mill and warehouse of the John Hoffer Flouring Mill Company, in Trewick street, which was destroyed by fire more than three weeks ago, are still smouldering. Water is played on the ruins nearly every day and it breaks out anew putting forth a cloud of smoke. The wheat was being taken from the cellar of the ruins this morning and placed in a car ready for shipment.

Steelton Personal

Alfred and Edgar McNear, sons of B. F. McNear, Sr., stationed at Camp Meade, returned to camp this morning after being home since Friday. Miss Jessie Wells, of Weilsburg, West Virginia, was a week-end visitor at the McNear residence.

Steelton Personal

Benjamin F. Brandt, of Camp Meade, spent the weekend at his home here. Mrs. Levi H. Still, 20 South Second street, is the guest of Mr. and Mrs. O. N. Keen, of Camp Meade.

Steelton Personal

Mrs. Levi H. Still, 20 South Second street, is the guest of Mr. and Mrs. O. N. Keen, of Camp Meade. Lieutenant Arthur Miller, stationed at Camp Meade, was the guest Saturday of his parents, Mr. and Mrs. W. A. Miller, South Second street.

Businessmen Are Enthusiastic Over Plans to Help Nation's Fighting Men

Cumberland county businessmen, at an enthusiastic meeting in Carlisle yesterday, effected an organization to raise their share of the Y. M. C. A. War Fund. The meeting was addressed by District Chairman E. J. Stackpole, Secretary R. B. Reeves, Boys' Campaign Manager Arch H. Dinsmore, and Edward Bailey, of Harrisburg. The following officers were elected:

Electric Current Case From Chester County Decided by Public Service Board

"The justice of a minimum charge to serve" charge to the patrons of a utility has been well established. Under which this service is rendered by the respondent to the complainant a minimum demand charge would seem to be just and proper holds the Public Service Commission in an opinion written by Commissioner John S. Rilling in ruling on the complaint of the Phoenixville, Valley Forge and Strafford railway against the Philadelphia Suburban Gas and Electric company.

Girls! Try This Pretty French Woman's Beauty Recipe

Paris—Oh! What a beautiful complexion! The charming Mlle. Moreix says every woman can have one by using Creme Tokalon Roseated each night and morning. Totally different from all others. Success guaranteed or money back. Supplied at every good toilet counter. Among others, Gorge's, Kennedy's, Croll, Keller, Dives, Pomeroy & Stewart, Bowman & Co.

CUMBERLAND TO AID Y.M.C.A. WORK

Businessmen Are Enthusiastic Over Plans to Help Nation's Fighting Men

Cumberland county businessmen, at an enthusiastic meeting in Carlisle yesterday, effected an organization to raise their share of the Y. M. C. A. War Fund. The meeting was addressed by District Chairman E. J. Stackpole, Secretary R. B. Reeves, Boys' Campaign Manager Arch H. Dinsmore, and Edward Bailey, of Harrisburg. The following officers were elected:

Electric Current Case From Chester County Decided by Public Service Board

"The justice of a minimum charge to serve" charge to the patrons of a utility has been well established. Under which this service is rendered by the respondent to the complainant a minimum demand charge would seem to be just and proper holds the Public Service Commission in an opinion written by Commissioner John S. Rilling in ruling on the complaint of the Phoenixville, Valley Forge and Strafford railway against the Philadelphia Suburban Gas and Electric company.

Girls! Try This Pretty French Woman's Beauty Recipe

Paris—Oh! What a beautiful complexion! The charming Mlle. Moreix says every woman can have one by using Creme Tokalon Roseated each night and morning. Totally different from all others. Success guaranteed or money back. Supplied at every good toilet counter. Among others, Gorge's, Kennedy's, Croll, Keller, Dives, Pomeroy & Stewart, Bowman & Co.

'READY TO SERVE' CHARGE UPHELD

Electric Current Case From Chester County Decided by Public Service Board

"The justice of a minimum charge to serve" charge to the patrons of a utility has been well established. Under which this service is rendered by the respondent to the complainant a minimum demand charge would seem to be just and proper holds the Public Service Commission in an opinion written by Commissioner John S. Rilling in ruling on the complaint of the Phoenixville, Valley Forge and Strafford railway against the Philadelphia Suburban Gas and Electric company.

Girls! Try This Pretty French Woman's Beauty Recipe

Paris—Oh! What a beautiful complexion! The charming Mlle. Moreix says every woman can have one by using Creme Tokalon Roseated each night and morning. Totally different from all others. Success guaranteed or money back. Supplied at every good toilet counter. Among others, Gorge's, Kennedy's, Croll, Keller, Dives, Pomeroy & Stewart, Bowman & Co.

READY TO SERVE CHARGE UPHELD

Electric Current Case From Chester County Decided by Public Service Board

"The justice of a minimum charge to serve" charge to the patrons of a utility has been well established. Under which this service is rendered by the respondent to the complainant a minimum demand charge would seem to be just and proper holds the Public Service Commission in an opinion written by Commissioner John S. Rilling in ruling on the complaint of the Phoenixville, Valley Forge and Strafford railway against the Philadelphia Suburban Gas and Electric company.

Girls! Try This Pretty French Woman's Beauty Recipe

Paris—Oh! What a beautiful complexion! The charming Mlle. Moreix says every woman can have one by using Creme Tokalon Roseated each night and morning. Totally different from all others. Success guaranteed or money back. Supplied at every good toilet counter. Among others, Gorge's, Kennedy's, Croll, Keller, Dives, Pomeroy & Stewart, Bowman & Co.

READY TO SERVE CHARGE UPHELD

Electric Current Case From Chester County Decided by Public Service Board

"The justice of a minimum charge to serve" charge to the patrons of a utility has been well established. Under which this service is rendered by the respondent to the complainant a minimum demand charge would seem to be just and proper holds the Public Service Commission in an opinion written by Commissioner John S. Rilling in ruling on the complaint of the Phoenixville, Valley Forge and Strafford railway against the Philadelphia Suburban Gas and Electric company.

Girls! Try This Pretty French Woman's Beauty Recipe

Paris—Oh! What a beautiful complexion! The charming Mlle. Moreix says every woman can have one by using Creme Tokalon Roseated each night and morning. Totally different from all others. Success guaranteed or money back. Supplied at every good toilet counter. Among others, Gorge's, Kennedy's, Croll, Keller, Dives, Pomeroy & Stewart, Bowman & Co.

Advertisement for Kuppenheimer Clothes featuring the slogan "Not Almost" and "Always Reliable". It includes an illustration of a man in a suit and hat, and text describing the quality and variety of their clothing, such as "The reason DOUTRICHS are doing such a tremendous, increased business is because our immense stocks bring many a NEW customer HERE after they have been to the 'other stores' where they can get 'almost' what they want."

Advertisement for ARDSLEY-SPATTER Overcoat, featuring the slogan "Going Some" and "The GLOBE The Big Friendly Store". It includes an illustration of a man in a long overcoat and text describing the quality and style of the garment.