

# KING CAR MAKES NONSTOP RECORD

### Continues For Seven Days and Nights, Covering Almost 3,000 Miles

Two thousand seven hundred and thirty-five miles in seven days and nights of continuous motor running, without mechanical adjustments or repair, except that due to a collision is the Northwest record established by a seven-passenger eight-cylinder stock King motorcar.

The car's motor never faltered from the time that W. G. McAduo, secretary of the treasury, gave the boys the word "Go" at the Saint Paul Hotel, at Minneapolis, Minn.

The conditions of the test were specifically designated to approximate those under which the owner operates his car.

Through rain, sunshine and shadow, night and day for 168 hours, this King Eight touring car, with driver and observer, and sometimes passengers, swept forward.

During the seven days and nights of running, the motor was not stopped once. Nor was any adjustment made upon it, except the change of a fan due to a collision.

Everything that happened to the car down to the most minute detail was recorded by the observers, who were continually on duty for the 168 hours. Not even a spark plug was changed, and the tires, which started with Detroit air, finished with the same kind of air, giving all the tires so far over six thousand miles of usage.

The car used had 29,550 miles to its credit when it started in the grind between St. Paul and Minneapolis and at the finish the odometer showed that in all it had traveled 32,285 miles.

In all, the car made 115 round trips between St. Paul and Minneapolis, besides traveling 139.4 miles a day, light ride outside of St. Paul. The total number of car stops was 105, consuming 14 hours 10 minutes of time, but the motor ran all the time.

The total gallons of gasoline used was 221, giving the car approximately thirteen miles to the gallon of gasoline. The oil record established a precedent in that only 1.5 gallons were used, or a record of 1,458.66 2-3 miles to the gallon.

As the car had to remain within the speed limit of 15 miles an hour for the total average of miles per hour for running, excluding stops, was 17.67, including stops, 16.25.

The car was in the hands of a special for the grind. It came to St. Paul having a long record behind it. Making an international nonmotor run on the Sheepshead Bay motor speedway and the highways of Long Island under the official sanction and supervision of the American Automobile Association, the King King stock King rolled up 10,848 miles in 336 hours of running without once having stopped the motor.

The test between the two cities was fraught with excitement. Announcement was made before the start of the test that it was to be educational rather than spectacular. It was not to be a method of the majority of automobile contests, but it was otherwise. It was used by a police officer to answer an emergency call, it narrowly averted an early morning collision in Minneapolis with a reckless joyrider, and it came near coming to grief in a spectacular accident in St. Paul.

Automobile history, it is believed, will not show where any other car as badly damaged as this was able to have the repairs made and run less than seven hours be back on the road, resuming its test, without the motor stopping at all. The time lost in making repairs caused the motor to idle considerably. This was called to the attention of the officials staging the test, because such a long period of idling naturally would eat up gasoline and cut mileage down, but this did not deter the officials, who seem to be made of the same kind of human endurance that the car possesses mechanically.

The test was observed by officials appointed by the St. Paul Daily News and the Minneapolis Daily News. The referees for the contest were George Flynn, of the Minneapolis News, and H. K. Edwards, of the St. Paul Daily News.

The test was staged and conducted by E. R. Boutell, inc., distributors for the King.

**MRS. SHELLER BRETZ DIES**  
New Bloomfield, Pa., July 28.—Mrs. Sheller Bretz died Wednesday afternoon about 2 o'clock from appendicitis after a short illness. Mrs. Bretz was a daughter of Mr. and Mrs. J. C. Weaver, of Tyrone township. Her husband and two children survive. Funeral services were held this morning. Burial was made in New Bloomfield Cemetery.

**TOOTH CAUSES TROUBLE**  
Dillsburg, Pa., July 28.—Mrs. H. W. Evans is seriously ill at her home in Harrisburg street. A short time ago she began to suffer with a tooth and a little later had the tooth drawn, but the tooth which had been infected had spread the infection before it had been drawn.

**AUTO TRIP TO GETTYSBURG**  
Blain, Pa., July 28.—The members of the Bible class of the Zion's Lutheran Sunday School made a trip to Gettysburg by automobile to-day. The members invited their families and friends, a dozen machines conveying them to the famous battle-field.

# AUTOMOBILE FASHIONS SHOW MILITARY TREND

Jean Justice and her Willys Knight Eight



World war effects are being reflected not only in automobiles, but in their upholstery and in the appareling of chauffeurs and footmen.

The militaristic tendency was most noticeable at the Automobile Fashion Show at Sheepshead Bay in the Willys-Knight car entered by Jean Justice.

This car was the newest example of the forthcoming style and might have been designed for the commanding general of the army so studiously did the designers and decorators adhere to the khaki color scheme.

The car, an eight-cylinder Willys-Knight touring model, with Victoria top, was of two-toned tan, the body and running gear being of a lighter shade than the Victoria top.

Inside the car was finished in olive drab with chauffeur and footman in olive drab attire.

This car attracted much attention, not only from the army people in attendance at the show, but from society people as well, because of its unique and timely color scheme.

## Repair Kit For Tires A Necessary Adjunct

"Preparedness" in all things has become more or less of a byword, but the motorist who enjoys his Sunday tour or occasional vacation trip which takes him away from his home garage and the automobile supply houses where he is known, always finds it expedient to go prepared to make a few simple repairs on his tires should emergency call for his services. In order to be ready for anything the thoughtful motorist is bound to provide himself with a well equipped kit of sundries and repair material. This kit should include such articles as emergency patches for casing and tube, valve insides, cement and tape.

Such a kit is never expensive and much more than worth the cost. It is repaid for their investment by the assurance and peace of mind which they derive from the knowledge that they are ready for anything.

F. A. Mosher, manager of the local branch of the Fisk Rubber Company, advises every motorist to carry a surety kit in his car at all times. In recommending this he suggests a situation which is likely to occur with any motorist even though he is carrying a spare tire mounted and ready for instant use. "Supposing a car picks up a nail and the driver is obliged to call his spare tire into action, it is quite possible that his sleeves and change his tire there on the roadside. With no additional tube available, his only recourse would be to make temporary repairs with the kit in his car. Right there is where the sundry kit proves its value. An emergency tube patch costing only a cent or two would enable him to repair the injury temporarily and continue on his journey after only a slight delay. The moral is, provide your car with an adequate sundry kit and you will always be equipped to enjoy motoring to the full."

## Perry Wants Credit For Enlistments in the Army

Marysville, Ja., July 28.—An echo of the complaint of counties near Philadelphia is heard in the appeal of Perry county residents that they have not received proper credits for the men sent into the United States military service.

Numerous Perry county residents have enlisted through recruiting offices in Harrisburg and other cities. The complainants assert that many of these have not been credited to the county, but to the towns and cities in which they have signed the papers for duty.

During the period in which recruits were credited to their districts, April 2 to June 30, Perry county was credited with 51 enlistments. A list compiled by the Perry County Times, of New Bloomfield, shows that 109 Perry county men enrolled during this period, of which 58 were credited to counties other than Perry.

Perry's quota was 189 men. Deducting the credits of 51, the county will now be compelled to furnish 138 men. Residents are fighting for the credit of the other 58 and the privilege of furnishing but 80 more men.

## Early Buying of Trucks To Insure Delivery

Do your motor truck buying early. This is the slogan which is now being heralded across the country for the reason that the Government is looking about, with the idea of ordering some 70,000 trucks. Which means that the farmer, the factory owner, the merchant of progressive tendencies ought to get his order in now, to assure him of his vehicle. For when the U. S. A. wants things, it usually manages to get them.

Users of light trucks need not worry, however, with the "attachment" company on the job. Utilization of the pleasure car chassis permits the quick change from a touring car to a ton truck, as is the case with the Smith Form-a-Truck. This firm is not handicapped so long as the pleasure car makers continue to produce their machines, for an output of 40,000 this year is predicted by the production manager of the Smith Motor Truck Corporation.

However, with Uncle Sam casting about to locate enough trucks to supply his tremendous army, chances are that many makes of trucks will be put into use, and that the man who needs a commercial power-vehicle will do well to make his bid while he still has a chance of having his efforts rewarded.

## Rex Garage and Supply Co.

1917 North 3rd St. HARRISBURG, PA.

The largest Garage in the city is the logical place to house your car. Live storage includes cleaning your car daily delivering to your house and calling for it.

Goodyear service station—a full line of Tires, Tubes and accessories.

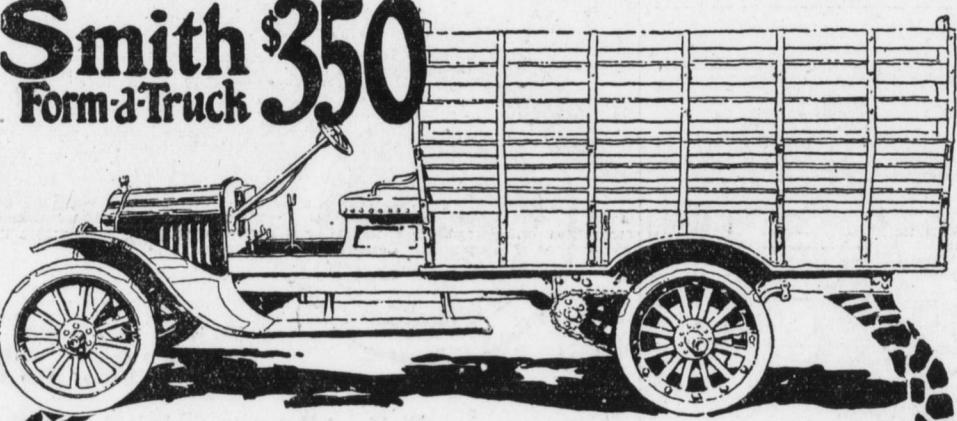
Agency Hassler Shock Absorbers for Ford Cars.

Atlantic and Mobiloils.

Distributors Portage Tires. Guaranteed 5,000 Miles.

NEVER CLOSED

Gas Bell 4170 Supplies Dial 5438



# Smith 350 Form-a-Truck

And any one of Eight Bodies in a Minute.

A SMITH FORM-A-TRUCK and the famous 8-in-1 farm body covers every possible use for a truck on the farm—an exclusive Smith Form-a-Truck feature.

Simply pull lever and get any one of 8 combinations of farm bodies—stock rack—hay rack—hog rack—grain—flat rack—high flare board—flat rack, scoop board down. Then change from one type to another in an instant without a single tool.

**Twice the Work of 2 Teams**  
Don't take your horses out of the field—don't delay farm work. Use Smith Form-a-Truck. Haul twice as much as two teams. And at one-half the cost. Yet it costs no more than a team and harness—\$350.

Use the Smith Form-a-Truck for hauling milk—grain—crops—feed—manure—lumber—coal—and everything else on the farm.

**Save 2/3 Time**  
When you haul crops or milk to town with horses you must leave early. You get back late. Your day is wasted.

Smith Form-a-Truck will make the same trip in two-thirds less time. Save this time for profitable work on the farm.

**Save 20 Acres and \$300**  
Government statistics show that in a single year four horses require the feed of 20 acres—and cost \$41 to feed and stable. Bedding, veterinary, medicine, shoeing, care—cost extra. The Smith Form-a-Truck costs only \$140 a year—and saves this 20 acres.

**Wonderful Economies**  
Less than 8¢ per ton mile, exclusive of driver's wages. 6,000 to 8,000 miles per set of tires—12 to 15 miles per gallon of gasoline—12 to 15 miles per hour. And repair expense practically nothing.

Smith Form-a-Truck costs you absolutely not one penny while idle.

**Made for 6 Cars**  
The Smith Form-a-Truck attachment and a new or used Ford, Maxwell, Dodge Bros., Chevrolet, Buick or Overland, makes a fully guaranteed, powerful, strong, 1-ton truck. Every day you delay using a Smith Form-a-Truck on your farm you are losing money.

**Camp Curtin Garage**  
7th and Camp Sts. Bell 1093J

# DODGE BROTHERS MOTOR CAR

A standard which was naturally high, has been made higher still, by the bestowal of complete confidence on the part of the public.

It is a mutual contract which offers constant inspiration to the manufacturer and constant insurance to the customer.

With the interest of buyer and seller so closely knit together, the result, everywhere, is what might have been expected.

It is impossible, for Dodge Brothers, with all their great facilities, to build enough motor cars to satisfy the public.

It will pay you to visit us and examine this car.

The gasoline consumption is unusually low. The tire mileage is unusually high.

Touring Car or Roadster, \$885; Winter Touring Car or Roadster, \$1000; Sedan or Coupe, \$1265 (All prices f. o. b. Detroit.)

**KEYSTONE MOTOR CAR CO.**  
57 to 103 S. Cameron St. HARRISBURG, PA. C. H. BARNER, Manager

## Local Man Speaks of Advantage of Small Car

"Economy means the elimination of waste, the curtailment of expenditures for things not essential to the pursuit of right living and efficiency," says E. C. Emsinger, local distributor for Dort motorcars. "Yet to many it suggests hoarding and deprivation. It breeds a thought that is likely to curb happiness and impede progress.

"People who own cars know that it is true economy to own one. They know that it is waste to be without one—waste affecting those things in life that makes for business utility and domestic content.

"No, economy certainly doesn't require cutting out the motor car, but it does require more consideration in selecting one so that it may give adequate service and satisfaction at the lowest possible cost of maintenance and operation.

"From all indications men who have been running expensive cars have decided to drive smaller and less wasteful one. They are finding that some cars of the less expensive type serve them just as well in every practical sense.

"Our sales and prospect lists show a large number interested in Dorts who have decided to own one. The price and could well afford to go on so doing from a strictly pecuniary standpoint. They have measured values on the basis of fair returns on their investment.

"This changed attitude is not because of any fear of hard times. With the enormous war expenditures to be made, this country will soon be reveling in an unprecedented wave of prosperity, and when Americans have it they spend it."

# GORSON'S

Selective Types of Used Cars

With the "ORIGINAL BEAUTY AND VALUE" intact are the class of cars of which our stock is composed. Our cars have proven their leadership over other grades of used cars to thousands of car owners.

EASY PAYMENTS IF DESIRED.

1917 CHANDLER Touring, practical; by new extra equipment, bargain.

1917 COLE Touring, ran 2000 miles; excellent condition.

1917 STEARNS-KNIGHT Touring; bought new two months ago; snap.

1917 OVERLAND Touring, also Roadster, both in cracker-jack shape.

PACKARD Touring Twin Six; 7-pass; only slight wear.

1917 MITCHELL Touring; very attractive; plenty of power.

1917 Saxon Touring; used as demonstrator; light Six.

SUPER-SIX HUDSON Touring; all the latest equipment; fine condition.

1917 BUICK Roadster; like new; mechanically right; extra tire.

1917-16-15 DODGE Touring; all will give excellent service.

1917 HAYNES 5-pass. Roadster; wire wheels; new tires; attractive.

1917 CHANDLER Roadster; 4-pass.; shows no wear whatever.

1917-16-15 MAXWELL Roadsters and Touring; all in good order; \$275 up.

1917 PAIGE Touring, also Roadster; both in A1 condition.

1917-16-15 CHALMERS Touring; light Sixes; some run only 1500 miles; low price.

1917 STEARNS-KNIGHT Sedan; beautiful; upholstery, all year round car.

1917-16-15 HUPMOBILES, all with electric starters, as low as \$450.

WHITE Touring; later model; a high grade car at a low price.

1917-16-15 STUDEBAKER Touring; all in fine running order; \$200 up.

1917 GRANT Six Touring; light; roomy; 6-pass.; economical; powerful.

1916-15 BUICK Touring; light Sixes; some like new; reasonable prices.

1916 CHALMERS Sedan; originally cost \$450; extra tire.

MERCEDES Speedster; rebuilt; very attractive condition.

1916 APPERSON "B" Touring; 7-pass.; perfect from start to finish.

1916 SCRIPPS-BOOTH Roadster; 4-pass.; attractive; low upkeep; snap.

1916 JEFFERY Touring; a car you will be proud to own.

FORD Roadsters and Touring, all models, at low prices.

**GORSON'S AUTOMOBILE EXCHANGE**  
238-240 NORTH BROAD ST., PHILA., PA.

AGENTS WANTED. OPEN SUNDAY 9 to 2  
SEND FOR FREE BARGAIN BULLETIN.

**HENRY B. MARTIN DIES**  
Mount Joy, Pa., July 28.—Henry B. Martin died on Wednesday evening at the age of 74 years. He is survived by one son, Andrew, of Washingtonboro, and two daughters, Mrs. Willis Krady, of Lancaster, and Mrs. Isaac Hoffer, of Elizabethtown. His wife, who bore her marriage was Sarah Missemer, daughter of the late Jacob H. Missemer, of Missemer's Mill, died last August. Mr. Martin was a prominent member of the United Zion Brethren Church. Funeral services were held at the home this morning at 9:30 o'clock and at the Menonite Church at 10 o'clock by the Rev. John Brinser. Burial was made in the Henry Therle Cemetery.

**RED CROSS WORK**  
Shiremanstown, Pa., July 28.—The Red Cross auxiliary is progressing rapidly. Comfort kits are being made, besides many other useful articles.

# CHEVROLET

We have been manufacturing motor cars for many years and each owner has complete confidence in his car for he knows that it represents the soundest mechanical principles.

We test every part. Motor parts, transmission, clutch, axles, and all other units are rigidly inspected for measurements; and each part in which maximum strength is required is tested for strength.

This is why Chevrolet cars enjoy an enviable reputation. You buy lasting satisfaction when you purchase a Chevrolet.

**DRISCOLL AUTO CO.**  
147 S. Cameron St. FACTORIES

New York City; Tarrytown-on-Hudson; Flint, Mich.; St. Louis, Mo.; Oakland, Cal.; Oshawa, Canada; Fort Worth, Texas; Bay City, Michigan; Toledo, Ohio

DISTRIBUTING BRANCHES  
Atlanta, Ga.; Kansas City, Mo.; Minneapolis, Minn.

\$550 f. o. b. Flint  
\$535 f. o. b. Flint  
\$675 f. o. b. Flint  
\$875 f. o. b. Flint  
\$1385 f. o. b. Flint  
\$1385 f. o. b. Flint

CHEVROLET