

Catholic Divinity Students at Blue Ridge Cottage

Waynesboro, Pa., July 23.—Thirty-five Catholic priests, of the Order of Oblati Scholastica, are instructing a large class of divinity students at their cottage at Charman, Blue Ridge mountains, recently purchased through Charles S. Gardner from the Vaughn estate. It is known as a summer school, and the young seminarians are given special courses of study as well as such recreation as is appropriate for the season, such as baseball, tennis and other outdoor athletics. Hikes through the mountains, trips to Gettysburg, etc., are features. The cottage has ten rooms and there are eight acres of ground attached. The new owners have made many improvements. The porches have been made into outdoor sleeping rooms, and new porches have been added.

Five-Pound Hammer Falls Forty Feet on Man's Head

Lewistown, Pa., July 23.—Paul Beaudette, of this place, met with a peculiar accident at the Burnham Y. M. C. A., when he was struck on the head by a falling five-pound hammer which cut an ugly gash. The hammer fell a distance of 40 feet. It dropped from the loop of a rope in which it was being lowered. William Wagner, of Maitland, had the forefinger on his left hand almost cut off when an ax he was using caught on an overhead wire. Paul Rider, aged 14 years, had a narrow escape from drowning while bathing under the county bridge. Unable to swim he got in deep water and was finally rescued by Paul Lowler and John Wagner, boy companions.

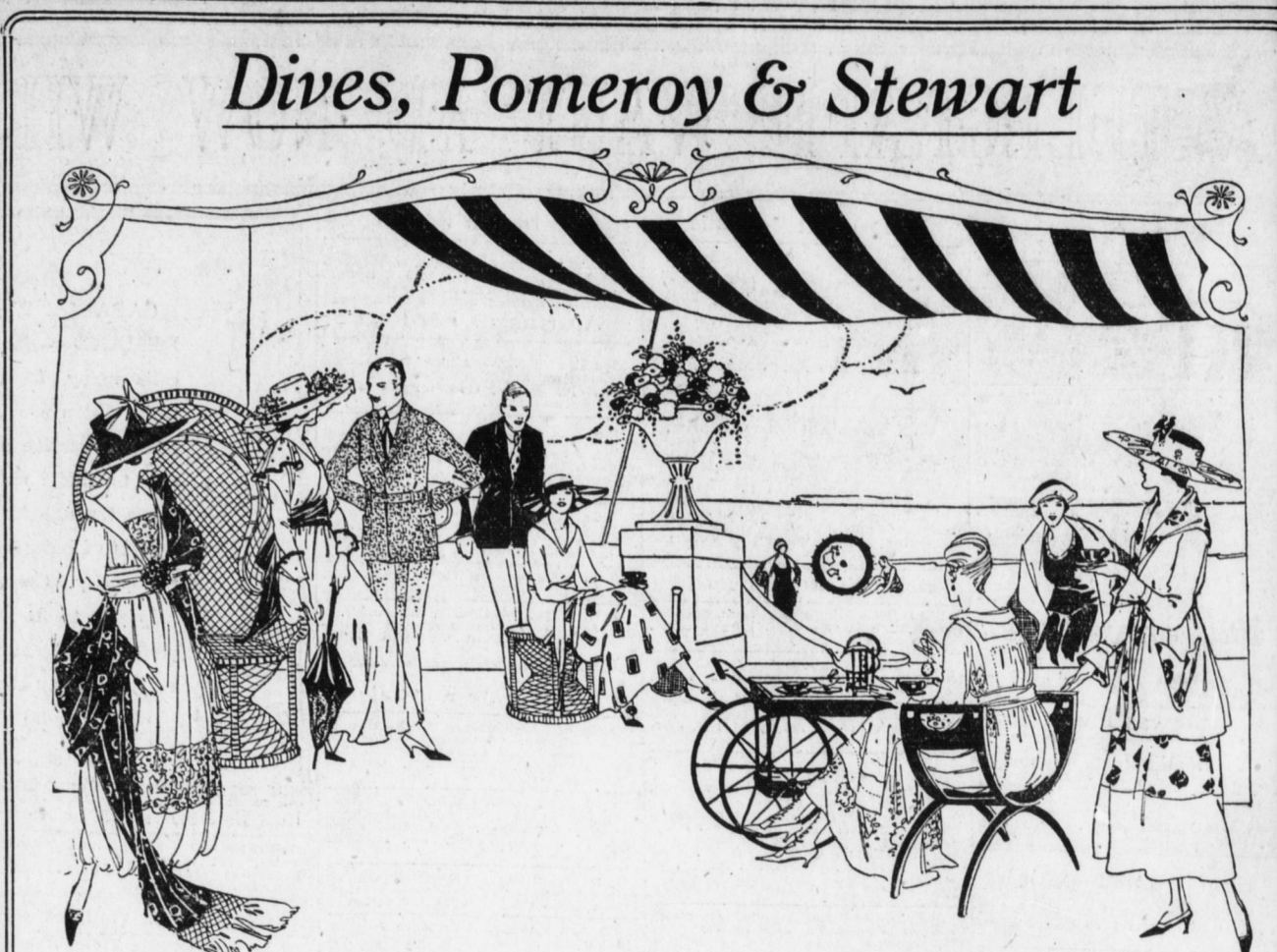
News Items of Interest in Central Pennsylvania

Danville.—Dr. Robert S. Patton, a Danville physician, has enlisted in the medical reserve corps. Bloomsburg.—Columbia County Sealer of Weights and Measures Henry C. Taylor has made the discovery that more Columbia county merchants have been robbing themselves than their customers. The scales of one confectionery merchant, he testified, showed the merchant had been selling a pound and a quarter of candy for a pound. York.—Local cigar manufacturers are experiencing trouble supplying their trade, both wholesale and retail, because of the scarcity and high prices asked for tobacco. York.—Growers from this country predict an unusually large peach crop. The prices will be considerably lower than during the last two seasons.

WEST SHORE NEWS

Social and Personal News of Towns Along West Shore

Miss Marie Oren, of Newport, is visiting Mrs. George Shaffer and Mrs. Smith, at New Cumberland. Miss Edith Graybill, of York is visiting friends at New Cumberland. Mrs. Mabel Cookson and daughter, of New Cumberland, are visiting relatives at Alpine, York county. Miss Grayce Shelly, of Market street, New Cumberland, is visiting her aunt, Mrs. C. Fager, at the Picketts, York county. J. H. Morley, of Marysville, spent several days at New York City. Mrs. Ida Gault, of Harrisburg, was the guest of Marysville relatives.



Vacation Underprice Sale of Suits and Dresses

For Women and Misses Scores of Garments in One of a Kind Styles Reduced From our regular stock of summer clothing for women and misses we have grouped for immediate clearance the most desirable styles that have been found this season. The garments are of the kind that women who are most discriminating would choose. One of the most important clearances is in the disposal of our entire remaining stock of wool Jersey suits. The weave in every case is of the finest, heaviest quality and there is not a garment in the entire collection that will not be in splendid fashion in the late fall months. The colors are desirable shades of Copenhagen, light blue, gold, tan, rose and green, and the sizes range from 16 to 40. Reduced from \$25.00 and \$27.50—specially priced, beginning to-morrow \$17.50

Regular \$25.00, \$27.50 and \$30.00 navy blue, black and tan suits in late summer styles that will be suitable throughout the fall season are specially priced in the clearance to-morrow. \$20.00 Regular \$35.00 navy and black taffeta suits in sizes 36, 38 and 40. Specially priced in the clearance, \$25.00 HUNDREDS OF COLORED VOILE DRESSES REDUCED Attractive colored voile dresses in stripe design with a wide flounce and deep sailor collar; sizes 36 to 46. Regularly \$35.00. Specially priced in the Mill and Factory Sale, \$23.50. Regular \$12.50 and \$9.50 fancy voile dresses in desirable styles with organdie collars. Specially priced in the Mill and Factory Sale, \$8.50 and \$7.50 MANY STYLES OF SILK BLOUSES REDUCED Regular \$3.75 and \$4.50 finest quality pongee middie blouses with large sailor collar in stripe soire with a hemstitched edge of pongee. Specially priced in the Mill and Factory Sale, \$2.95 Regular \$2.98 tub silk waists in desirable stripe designs in sizes 36 to 44. Specially priced in the Mill and Factory Sale, \$2.50 Dives, Pomeroy & Stewart, Second Floor

Beautiful Satin Weaves Are Featured in the Showing of New Fall Silks

Satins and crepes are prominently mentioned by fashion authorities and the new silks that have just come in include a representative showing of these fine weaves. Many new shades are displayed assuring an incomparable color assortment. Pallier de Soie—the new satin—shown in 25 street shades; 36 inches wide, yard, \$1.50 New Messaline in more than a score of rich colorings, 36 inches; yard, \$1.29 Satin Fineste, a new twill faced satin for hard wear, 10 street shades, 56 inches; yard, \$2.25 Crepe de Chine in 20 colors; 40 inches wide; yard, \$1.50 and \$2.00 New Georgette 25 shades; 40 inches wide; yard, \$1.85 and \$2.00 New Black Duchesse, yard, \$1.69 and \$2.00 Black French Taffeta, 36 inches wide, yard, \$2.25; 40 in. yd., \$2.50 Bathing Suit Satin in black and black and colored glaze effects, yard, \$2.00 Dives, Pomeroy & Stewart—Street Floor.

Mid-Summer Prices on Wash Materials in the Mill and Factory Sale

50c voile in white grounds with woven colored stripes, bars and printed floral designs, 36 inches wide. Special, yard, 29c 59c and 65c voile in fancy woven plaid designs and printed floral effects, 38 inches wide. Special, yard, 49c 50c embroidered silk voile in tan grounds with self colored silk plaid and colored embroidered patterns; 32 inches wide. Special, yard, 31c 35c printed voiles in white and colored grounds, figured designs and plaid patterns; 38 inches wide. Special, yard, 29c 59c silk and cotton pongee, in white and colored grounds with sports figures; 36 inches wide. Special, yard, 29c 35c tussah in white grounds with colored stripes and plaid designs; 36 inches wide. Special, yard, 29c 35c voiles in white and colored grounds, with stripes, checks and colored designs; 36 inches wide. Special, yard, 25c 25c linen in white grounds, printed in floral designs and stripes; 40 inches wide. Special, yard, 19c 29c suiting in white grounds with neat and fancy colored stripes; 36 inches wide. Special, yard, 19c Dives, Pomeroy & Stewart—Street Floor.

Exceptional Values in Shirts and Overalls For Men

Men's blue chambray work shirts in light and dark colors; sizes 14 1/2 to 17. Mill and Factory Sale special 42c Men's "Amoskeag" and "Blue Bell" chambray work shirts; fast colors; faced sleeves and double sewed. Mill and Factory Sale Special 59c "Amoskeag" blue chambray sport shirts with elbow sleeves; sizes 14 to 17. Special 48c Overalls Reduced \$1.25 blue striped fast color apron overalls; broken sizes. Special 85c Men's blue denim apron and pant overalls; coats to match. Special 65c Boys' Overalls Blue pin stripe apron overalls; sizes 3 to 12. Special 35c Indigo blue fast color apron overalls; sizes 4 to 16. Special 50c Khaki apron overalls; sizes 4 to 12. Special 69c Blue chambray tan and stripe percale sport blouse waists, with elbow sleeves. Special 24c Blouse waists in plain or blue stripe chambray and stripe percale; sizes 5 to 15. Special 29c Dives, Pomeroy & Stewart, Men's Store.

A Choice Selection of Groceries Specially Presented For To-morrow

25-lb. sacks of granulated sugar will be featured to-morrow in the grocery department at \$2.05 In the list of choice edibles at moderate prices are these— D. P. & S. Santos Coffee, rich aroma, lb., 20c Raisins, first pick package, 15c Cream Cheese, lb., 30c Educator Bran pkg., 15c Sporn Macaroni, 2 lbs., 25c Elbow Macaroni, 2 lbs., 25c 6c Scouring Soap, 2 for 5c Blue Rose Rice, 3 lbs., 27c Cloverdale Ginger Ale, bot., 15c 2 for 25c Large Jar Mustard, 12c 50c Canister Lipton's Yellow Label Tea, 39c 35c Jar Apple Jelly, 29c 25c Canister Lipton's Yellow Label Tea, 39c Large glass apple jelly, 12c California Prunes, lb., 20c Sporn Candies, 2 doz., 25c Sour Pickles, doz., 9c Sunshine Golden Flakes, 28c Sunshine Afternoon Teas, 22c Cocoa in bulk, 2 lbs., 37c Lean Bacon, 1/2 lb., 20c Bologna, lb., 32c Sugar Cured Ham, lb., 29c Lean smoked shoulder lb., 24c Dives, Pomeroy & Stewart—Basement

White Summer Hose For Men

The man who does not wear white hose in summer is now the exception. Really, white is the coolest and neatest hose a man can wear. White cotton seamless hose, 12 1/2c White silk lisle seamless hose, 18c White fibre silk seamless hose, 35c White silk hose with fashioned feet, \$1.00 White silk hose, fashioned feet, spliced heels and toes, 75c Dives, Pomeroy & Stewart, Street Floor

Men's Open Mesh Union Suits

About the coolest garment imaginable. We have a good open mesh union suit with short sleeves, ankle length, at 50c Egyptian cotton ribbed union suits with short sleeves, ankle length, 69c Egyptian balbrigan shirts and drawers, shirts have short sleeves, drawers ankle length, each, 29c Egyptian cotton balbrigan shirts and drawers, shirts have long or short sleeves, drawers ankle length, each, 29c Dives, Pomeroy & Stewart, Street Floor

When Tired and Nervous If the end of the day finds you weary or irritable, with aching head and frayed nerves, you need something to tone and strengthen the system. BEECHAM'S PILLS are a remedy which quickly helps in restoring normal conditions. They act on the stomach, liver and bowels, and so renew the strength, and steady the nerves. A few doses of these world-famed family pills will Bring Welcome Relief Directions of Special Value to Women are with Every Box Sold by druggists throughout the world. In boxes, 10c., 25c.

Fine CELERY PLANTS Set Them Out Now We have extra fine, well-rooted plants of Giant Pascal, White Plume, Golden Self Bleaching. SPECIAL PRICES on these \$3.00 per 1,000; 500 for \$1.75; 100 for \$1.00; 10c per dozen (Give us your orders a day in advance if possible so we can pull them fresh for you to plant out). PLANT NOW—Beans, Beets, Carrots, Early Sweet Corn, Strasburg and White Chinese Radish, Turnip Swiss Chard Endive Notta Excelsior Peas for final crops. SPRAYERS—60c up; PYROX for killing bugs and worms; BLACK LEAF 40, for killing lice (25c size makes 6 gals.) Schell's Seed Store Quality Seeds 1307-1309 Market St.

To Manufacturers and Distributors who seek South American and Southern Business

Savannah is one of the largest ports of export on the Atlantic Coast, and the fastest growing important seaport in the United States, because of the advantages it offers as a manufacturing and distributing centre for the South and South America. Situate on the Southeastern coast, with a magnificent harbor, and direct and ample rail connections to the South and Middle West, it is getting a large share of the rapidly increasing foreign and domestic business of the important territory it serves. Labor is plentiful. Shipping facilities by rail and water are abundant. This Company offers very exceptional advantages for the establishment on its property, just outside of Savannah, of manufacturing, assembling and distributing plants. The Port Wentworth Terminal comprises some three thousand acres with nearly two miles of frontage on tide water. It is on the line of the Savannah & Atlanta Railway, which serves not only as a connection with all other roads entering Savannah but which through advantageous traffic arrangements with the Georgia Railroad forms the short line to Atlanta and the Middle West. Industries located on the Terminal already in operation or about to become active are: The Savannah Sugar Refinery (annual output 150,000 tons). Port Wentworth Lumber Co. (annual cut 36,000,000 ft.) Atlantic Paper and Pulp Co. (annual output 15,000 tons). Terry Shipbuilding Co. (controlled by Terry & Tench, now laying down 70,000 tons of shipping for the U. S. Government). The properties of the Savannah Warehouse and Compress Company and of the Globe Mfg. and Barrell Co. are just below the terminal. The Diamond Match Company plans to erect a plant near the Terminal property. Other large industrial undertakings are negotiating for sites. Homes for workmen and their families are constructed as required, on an attractive space reserved for the purpose and fully laid out by Chas. W. Leavitt, well known as an expert in the planning of industrial towns. Engineers of this corporation will gladly confer with Executives as to the specific advantages a seaport warehouse or branch plant at Savannah might offer to the business under consideration.

Port Wentworth Terminal Corporation, Savannah, Ga.

Information may also be obtained from the General Freight Agents of the Louisville & Nashville, the Nashville, Chattanooga & St. Louis, the Georgia Railroad and the Savannah & Atlanta Railway.

VETERANS IN COMPANY

Carlisle, Pa., July 23.—Among the members of Company G are three who are answering the call of their country for the third time. They are Charles Snyder and Sergeants Humer and Lau.

ROOSTER ATTACKS WOMAN

Dillsburg, Pa., July 23.—White Mrs. Margaret Rearick was catching a hen on Friday she was attacked by a large rooster. The bird attacked with spurs of both feet, cutting through the shoes on both sides of her right ankle and inflicting wounds. The foot became swollen and Dr. Yeagry was summoned to give the necessary medical attention. Mrs. Rearick was disabled for a time.

BOY'S SKULL FRACTURED

Marietta, Pa., July 23.—Clyde Metzger, aged 13 years, is in the Lancaster General Hospital, having been kicked in the head by a mule and his skull fractured. The accident occurred as the lad was watering the suit Saturday night.

Enola Home Guard Co.'s First Drill This Evening

Enola, Pa., July 23.—The first drill of the newly-organized Home Guard company will be held this evening on the athletic field of the Enola Y. M. C. A. 7:30 o'clock. George Blosser has been appointed temporary drillmaster. The company was organized Friday night and the following temporary officers elected: Chairman, Samuel G. Heppner; secretary, Howard S. Wain; publicity committee, Leslie S. Webster, Samuel C. DeZouché and Walter B. Dechler. Every man or boy above the age of sixteen years is eligible to membership in the company, and a special invitation has been extended to men of conscription age, who wish to receive some preliminary training. It is expected that the company will have an enrollment of about 100 members.

ARMENIAN AND SYRIAN RELIEF

Enola, Pa., July 23.—A. M. Billman, of New York City, president of the Armenian and Syrian relief committee, gave an illustrated lecture in the auditorium of the Summit street school building last night. His subject was "Armenian and Syrian Relief." Churches had no services on account of the lecture, as the ministers compose a committee in charge of the relief work in Enola. It was decided to raise a certain sum monthly toward the relief work. Other lectures will be held from time to time to raise funds for this purpose.

OUTING AT PAXTANG

New Cumberland, Pa., July 23.—On Saturday the King's Daughters Sunday School Class of St. Paul's Lutheran Church held an outing at Paxtang Park.

MARRIAGE ANNOUNCED

New Cumberland, Pa., July 23.—Mr. and Mrs. John Naus, of Second street, received an announcement of the marriage of their son, the Rev. Earl F. Naus, and Miss Minta Skinner, daughter of Mr. and Mrs. W. A. Skinner, of Enola, Ind. The wedding will be at home to their friends after August 1 at Garrett, Ind.

TO INSTALL OFFICERS

Enola, Pa., July 23.—Officers of Camp No. 680, Patriotic Order Sons of America, will be installed by J. J. Hemmer, of Wormleysburg, district president, this evening.

P. O. OF A. INSTALLATION

Dillsburg, Pa., July 23.—Mrs. Allison, of York, district president of the P. O. of A., on Friday evening installed the officers of Dillsburg camp before a large audience. Fourteen visiting members from Wells-ville camp were in attendance and a number of those present made short addresses. After the evening's business was disposed of a social evening was spent and refreshments were served. The following are the officers: President, Rena Souffer; assistant, Clara Arnsberger; vice-president, Mrs. Adam Miller; conductor, Mrs. Edgar Smith; assistant, Romaine Grossman; guards, Mrs. E. Cook; chaplain, Mrs. Charles Blauser; secretary, Mrs. L. L. Bentz; financier, Mrs. J. S. Kapp; treasurer, Mrs. O. M. Bushman.

SERVICE FOR SOLDIERS

Carlisle, Pa., July 23.—Last evening services were held for Company G, Eighth Regiment, on the college campus, at which time the Rev. Clinton Sheffer, the new pastor of the Second Presbyterian Church, spoke to the soldiers. He told them of their duties as soldiers, and urged them to remember that their actions would serve as an example for the communities from which they came. The address was heard by several hundred people. The meeting was in charge of Dr. William Hutchison, headmaster of Conway Hall. Special collections were taken in all the churches for the purpose of providing Testaments for all the soldiers before their departure for service.

ENLARGING HARDWARE STORE

Carlisle, Pa., July 23.—Excavations have been made for the enlargement of the hardware store of J. F. Bixler and Son's, East High street. The store is one of the oldest of its kind in the valley.