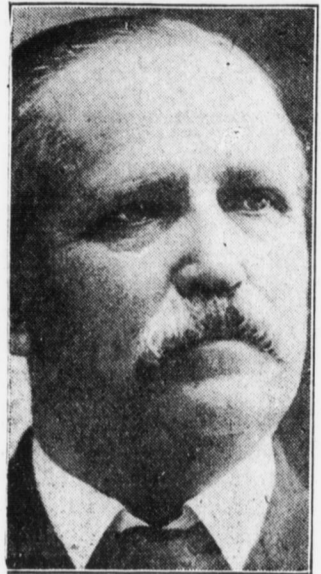


ALL NEWS OF THE RAILROADS

MEMORIAL PLANS NOW COMPLETE

Local Railroad Brotherhood Organization to Pay Tribute Sunday, June 17



JUDGE S. J. M. MCCARRELL. Plans were announced last night for the twenty-second annual memorial services of the local railroad brotherhood organizations, including the women's auxiliaries. Every lodge in the city will be a part of the special observance on Sunday, June 17. Exercises this year will be held in the Family theater, Third and Harris streets. The orator of the day will be Associate Judge S. J. M. McCarrell.

P. R. R. Glee Club
One special feature will be singing by the famous Pennsylvania Railroad Glee Club under the direction of Ira L. Behney. J. Stewart Black will be the accompanist. The club will sing two anthems, "The King of Live My Shepherd Is," by Shelley, and "One Sweetly Solemn Thought," by F. L. Sproule, tenor, will sing a solo, and "Some of These Days," by Hall, will be sung by a quartet consisting of John P. Gibson, J. Sprout, Charles N. Jackson and Jacob Schneider.

Addresses will be made by the Rev. Harry Nelson Bassler and W. H. Patrick, chairman of the memorial committee. The secretary, H. D. Beigh will call the roll of honor. The opening and closing prayer will be by the Rev. J. Bradley Markward, pastor of the Bethlehem Lutheran Church. The exercises close with singing, "America."

Standing of the Crews

HARRISBURG SIDE
Philadelphia Division—The 118 crew first to go after 1 o'clock; 122, 101, 112, 111, 114, 109, 105, 125.
Engineers for 112.
Fireman for 112.
Conductor for 109.
Flagman for 114.
Brakemen for 112 (2), 115.
Engineers up: Shocker, Simmons, Downs, Howard, May, Tennant, Dolby, Gable, Baldwin, Grass.
Firemen up: Walden, Hepner, Brynmeyer.
Conductor up: Thomas.
Flagmen up: McCann, Helm, Martin.
Brakemen up: Rexroth, Fissell, Miller, Wilton.
Middle Division—The 22 crew first to go after 3:40 o'clock; 16, 234, 208, 242.
Preference crews: 5, 4, 1, 10, 9, 6, 2, 7.
Firemen for 22, 4, 9, 6.
Conductors for 25, 6.
Flagmen for 5, 4, 10, 9, 2.
Brakemen for 4, 3.
Engineers up: Snyder, Leppard, Ford, Numer, Asper, Rensel, Buckwalter, Corder.
Fireman up: Austin.
Conductors up: Coup, Hiner, Hillish, Dottrow.
Brakemen up: Carl, Farlamen.

ENOLA SIDE
Philadelphia Division—The 238 crew first to go after 1 o'clock; 234, 216, 202, 224, 217, 233, 239, 231, 237, 209, 207, 221, 210.
Engineers for 221, 241.
Firemen for 209, 215, 217, 238, 234.
Conductors for 215, 233.
Flagmen for 232, 234, 237, 239.
Brakemen for 202, 209, 221, 241.
Conductor up: Sturgeon.
Brakemen up: Flack.
Middle Division—The 246 crew first to go after 2:45 o'clock; 249, 201, 243.
Yard Crews—Engineers up: Myers, Boyle, Shipley, Crow, Reese, Ulan, Kruger, Starnes, Morrison, Michie, Beatty, Feas, Kautz, Wagner, Shade.
Firemen up: Rice, Roberts, Miller, Burns, Johnson, Houdeshell, Gardner, Ripley, Kruger, Henderson, Selway Jr., Gilbert Dill.
Engineers for 5B, 6B, 1st 7C.
Firemen for 11B, 14B.

PASSENGER DEPARTMENT
Middle Division—Engineers up: T. D. Crane, Sparver, Keiser, Alexander, Crum, McDougal, Graham, Miller, Cimmel, R. M. Crane.
Firemen up: Wyanad, Koller, Hopkins, Lyter, Cornpross, Gates, Bealor, Holtzman, Dysinger, Hartz, Elbowman.
Engineers for Extra 12:45 p. m., 17, 37.
Firemen for Pass. extra 12:45 p. m., 62, 93.
Philadelphia Division—Engineers up: Hall, Omond, Dpl, Gibbons, Crisswell, Pleam, Lindley.
Firemen up: Floyd, White, F. L. Floyd, Shindler, Everhart, Johnson, Hershay, Starnes.
Fireman for 26.

THE READING
The 12 crew first to go after 11:30 o'clock; 14.
The 57 crew first to go after 11:15 o'clock; 62, 59, 71, 54, 55, 56, 61, 52, 68, 70, 66, 63.
Engineers for 57, 55, 52.
Firemen for 52, 54, 55, 56, 57, 65, 71, 14, 22.
Conductors for 56, 22.
Brakemen for 52, 55, 56, 58, 61, 63, 66, 68, 70, 71, 12, 34, 25.
Engineers up: D. Lackey, G. Lackey, Hollenbach, Crawford, Borden, Fraunfelder, Griffith, Wynn, Bilbey, Beecher, Freese.
Firemen up: Stover, Bryan, Stone, Wintermeyer, Snader, Gagler, Wintermeyer, Kroach, Walters.
Conductors up: Patton, Long, Bashore, Shover.
Brakemen up: Yentzer, Shuff, Gross, Bitler, Coleman, Moesline, Mosser, Shott, Farley, Brickley, Spangler.

PENNSY READY TO CUT SERVICE

Curtailling Passenger Service Also Means Less Dining Cars and Parlor Equipment

To meet recommendations of the Railroads' War Board some Pennsylvania Railroad passenger trains are to be consolidated, others will be eliminated altogether. Dining cars will be reduced in number, also parlor and sleeping cars, while club and observation cars will be partly cut off or discontinued altogether. A statement setting forth the conservation plan of the company was issued yesterday by George D. Dixon, vice-president in charge of traffic. He said: "To conform with the recommendations of the Railroads' War Board, issued from Washington, D. C., and calling upon all lines to readjust their services with a view to conserving fuel supply and increasing capacity for moving coal, food, government materials and troops, the Pennsylvania Railroad will, in the near future, put into effect a general and quite extensive revision of its passenger train schedules. The final details are now being worked out and will be announced to the public promptly upon completion. In the meantime we wish to explain, as clearly as possible, the purposes that we are seeking to accomplish and the conditions which have made it inevitable that we should take this step. "At the outset we desire to emphasize the fact that the object sought is not financial economy or an increase in revenues. In reality, a sacrifice in revenues will result. The economies which we are endeavoring to effect are physical and are being devised for the sole purpose of increasing, as much as possible, the amount of transportation service, of

the most urgently necessary kinds, that can be rendered to the government and the public with the railroad plant that is at our disposal. "In brief, we are attempting two things: First, to increase immediately the movement of such freight as foodstuffs and other necessities of life; second, to clear our lines for the prompt handling of government supplies and troops, which must shortly be transported on a large scale. As our lines, terminals and locomotives are now being used to the maximum of their capacity, the only way in which we can provide for the increased government traffic, and for the freer movement of perishable and other necessary freight, is to reduce the number of passenger train units that are being operated over the railroad. This will release both tracks and engines for other forms of service."

While the changes in railroad passenger train schedules are not ready for publication, the cut will include for publication, the cut will include suburban trains, through trains for the west, the Philadelphia and New York service, trains between New York and Washington, and will strike generally all branch lines. No changes will be made in the seashore trains. Sleeping cars and restaurant cars likewise will be withdrawn to a great extent, to be replaced by day coaches, accommodating a larger number of persons. To make up for the reduction in restaurant cars, the traveling public will be encouraged to take their lunches with them on the train, or avail themselves of the opportunity of station restaurants.

Conductor Spotts First Railroader to Join New Guard

C. H. Spotts, conductor on the Pennsylvania line, was the first railroad man to enroll in the Home Guard. He made one of the best addresses at the Courthouse Saturday night. Among other things he said that previous to the outbreak of the war he was a pacifist, but now he was swung around to the belief that it is the

duty of every citizen in the country to do his part toward bringing victory to the standards of democracy. "I am beyond the age limit," he said, "and I guess my physical qualifications would not be such as to make me attractive material for any recruiting officer, but in case of a pinch I guess I could use a gun and count one in a line of soldiers drawn up in defense of the land. I don't know anything about the ways of a soldier, but I want to learn. I don't know anything about handling a high-power rifle; but I am willing to take a gun and go out with other fellows, and I am willing to be shot over near the coast than in my own back yard."

Conductor Spotts has been prominent in educational and social welfare in the West End and is a well-known man.

RAILROAD NOTES

The Pennsy airbrake instruction car is doing duty at Millin, Pa. Hiram McGowan Simmers, clerk at Enola, is off duty to-day looking after the registration in his district. The monthly meeting of the Assembly No. 21, Mutual Beneficial Association of Pennsylvania Railroad Employees will be held to-night at Second and Walnut streets. Important business will be discussed. A freight wreck at Sheridan yesterday delayed Reading trains to and from Harrisburg. Railroad laborers are said to be increasing since the additional wages were announced sometime ago. The Reading hauled 1,165 excursionists on Sunday. Of this number 306 were out of Harrisburg. Reading is shipping an average of sixty carloads of cement daily from Reading plants. Railroad men who have enlisted for duty in France have been ordered to report at Philadelphia tomorrow. In the Lucknow Shop League series yesterday, the Smith Shop team defeated the Storehouse champions 4 to 2. The victors made their hits count.

Buy a Liberty Bond Now

The safety of the Nation is at stake. Your Country needs your help. By purchasing a Liberty Bond you fulfill a patriotic duty. Bonds are purchasable at any bank in units of \$50.00 and up, and bear interest of 3 1/2 per cent. Get yours at once.

KAUFMAN'S

MARKET SQUARE

UNDERSELLING STORE

TO-MORROW, WEDNESDAY, WE INAUGURATE OUR

First Annual Sale of Women's House and Porch Dresses

Over 2,500 Dresses Enter This 1st Annual Event

All Trim, Crisp, Fresh New Styles AT EXTRAORDINARY LOW PRICES

69c, 95c, \$1.45 & \$1.95

ALL SIZES AND EXTRA SIZES FROM 36 TO 59

NON-FADING

This remarkable offer is absolutely out of the ordinary because it provides an UNUSUAL OPPORTUNITY to buy better dresses, better materials, better making, absolutely fast colors, at prices that are actually less than you could make them for yourself. Close affiliations with the foremost makers — those who are particular about the making of their dresses is responsible for this offer — the result is dresses that fit well — wear well — look well.

In this sale are dresses for your breakfast table — for your dusting and cleaning — for porch wear — for the unexpected callers — for your vacation — for your maid — for outing wear — for a hurried errand.

Exceptional low prices make this event of supreme importance to you. Come to-morrow and secure a wonderful rare bargain. The pictures below give a suggestion of what to expect among the many styles in this sale.

HOUSE DRESSES

Made of fine percales and ginghams. An almost endless variety of stripes and checks. All guaranteed fast colors, perfect fitting. If you want a house dress for much less than you can make them, attend this sale. Price

69c

Hundreds of House Dresses at 95c

Scores of styles in Ginghams and Percales; smartly trimmed and well made; all sizes, 36 to 44.

One style of Striped Ginghams with white collar and cuffs; assorted colors; sizes 36 to 44. 95c

Another style of Figured Percales; belt and collar of plain color chambray; all sizes 36 to 44. 95c

Another style of Striped Ginghams. Assorted colors; white sailor collar and cuffs; sizes 36 to 44. 95c

One style of Striped Ginghams with square collars; assorted colors; sizes 36 to 44. 95c

Fresh, Crisp New House Dresses, \$1.45

A vast array of clever new styles of good ginghams, percales, etc., in many patterns, colors and styles; sizes 36 to 59.

Striped Ginghams in assorted patterns; turnover collar of plain material; all sizes, 36 to 59. \$1.45

Striped Ginghams with small turnover collar and cuffs; three-quarter sleeves; pocket; all sizes, 36 to 59. \$1.45

Neat Striped Ginghams — square sailor collar; vestee effect; nicely trimmed, three-quarter sleeves. \$1.45

Striped Ginghams — natural waist line; square collar; nicely trimmed, three-quarter sleeves. \$1.45

TRIM SMART HOUSE DRESSES AT \$1.95

Regular and Extra Large sizes. Made of fine Ginghams, Percales, and Chambrays; scores of different styles; sizes to 51. This lot includes adjustable styles.

Plain Chambray; collar and cuffs white or self color; four pockets; all sizes, 36 to 51. \$1.95

Fancy Striped Ginghams in many colors; white collars and cuffs; hands of self material on waist and skirt. \$1.95

Striped Gingham with long cuffs white or self color; four sailor collar; white, with embroidery edge; all sizes, 36 to 51. \$1.95

Heavy Quality Striped Ginghams, large sailor collars; three-quarter sleeves; assorted colors; sizes 36 to 51. \$1.95

KAUFMAN'S

MARKET SQUARE

UNDERSELLING STORE

Tomorrow Wednesday THE BIG SUIT SALE

Starts Promptly at 8:30 A. M.

138 Women's & Misses' CLOTH SUITS \$6.50

Which Originally Sold For \$15.00, \$18.00, \$20.00

Your Choice Tomorrow Only For

The Lot Includes Handsome Poplin Suits, Fine Poret Twill Suits, Smart Check Suits. Every Suit This Season's Latest and Most Popular New Models.

63 Suits That Formerly Sold at \$20.00 \$6.50

30 Suits That Formerly Sold at \$18.00 \$6.50

45 Suits That Formerly Sold at \$15.00 \$6.50

There are all styles and a good assortment of colors. No blacks or blues.

Sizes Are As Indicated

16	18	36	38	40	42	44
42	21	36	25	0	3	1

None Laid Aside None on Approval All Alterations at Cost

In the Bargain Basement Buy Your New Summer Wash Materials Now

Thousands of Yards of the Choicest New Weaves on Sale at Special Low Prices Tomorrow, Wed.

Beautiful patterns in scores of handsome, fresh, crisp Lawns, Voiles and Organdies; white and colors, and scores of other weaves in white material. All marked wonderfully low.

Lawns and Voiles 15c qualities, figured effects, 27 inches wide. Sale price, yd., 10c	19c Voiles 27 inches wide, fine quality, neat figured patterns. Sale price, yd., 15c	Silk Muslin An extra good heavy quality, full 27 inches wide. Sale price, yd., 29c	Pongee Natural color, wonderful fine qualities. Special sale prices, 59c to 95c
25c Voiles and Lawns Full yd. wide, new patterns. Sale price, yd., 12 1/2c	25c Organdies Fancy striped styles, 36 inches wide. Sale price, yd., 19c	Plain Voiles All the latest shades, strong tape edge. Sale price, yd., 25c	Beach Cloth In rose, green, brown and blue colorings; yard wide. Sale price, yd., 25c

EXTRA SPECIAL BEAUTIFUL NEW VOILES 29c

These are all exceptional fine quality and are shown in vast variety of the prettiest new checks and stripes; 40 inches wide. All the prettiest colorings.

White Summer Wash Fabrics 3,450 Yards of this Season's Most Attractive

New Summer Weaves at Half Regular Prices

Yards and yards of fine White Piques, Voiles, Skirtings, Mercerized Batiste, Flaxons, Nainsooks, India Linon, Striped Organdies and Palma Checks. A special fortunate purchase sold to us way below cost because of slight imperfections which are hardly noticeable. Take your choice of the lot to-morrow at

15c, 17c, 19c, and 25c yard.

FINER VOILES, Yard, 39c, 48c and 59c

A wonderful collection of beautiful patterns, unusual fine weave, 40 inches wide and far above the ordinary quality for the price.

In The BARGAIN BASEMENT In The BARGAIN BASEMENT

4-Piece Porch Set \$3.95

Big Demonstration & Sale of SA-LU-CO Aluminum Ware

Starts Tomorrow, Wednesday

Cooking Lessons a Big Feature of This Event

89c

The demonstrator in charge of this exhibit is an expert cook and in addition to acquainting you with the many unusual advantages of Sa-lu-co Aluminum Ware will teach you how to economize in your own cooking. During the course of the demonstration many dishes will be prepared, full recipes given and good, sound, practical reasons clearly demonstrated wherein SA-LU-CO Aluminum Ware makes the most desirable cooking utensil on the market, both from the standpoint of high quality and low price. Come — a cordial invitation is extended to you to visit our Bargain Basement where the special demonstration is in progress, and learn the merits of this famous ware.

Genuine SA-LU-CO Brand Aluminum Saucepan Regular Price \$1.50 Elsewhere, for 89 cents

A remarkable offer — made to acquaint you with the many advantages of this remarkable aluminum ware.

Full four-quart size, stamped from a single sheet of pure aluminum of unusual hardness. No seams or joints or a bit of solder, spouts, ears, etc., stay on forever because welded on. During this demonstration only 89c. Regular price \$1.50. Be prompt if you want one.