

RAILROAD RUMBLES

GLEE SINGERS AT MAJESTIC

Pennsylvania Club Discovered by Local Manager; Something New

Of all the hundreds of excursions that Harrisburg railroad men have engineered...

Pennsylvania Club Discovered by Local Manager; Something New... The glee club will appear as one of the five vaudeville acts at each performance...

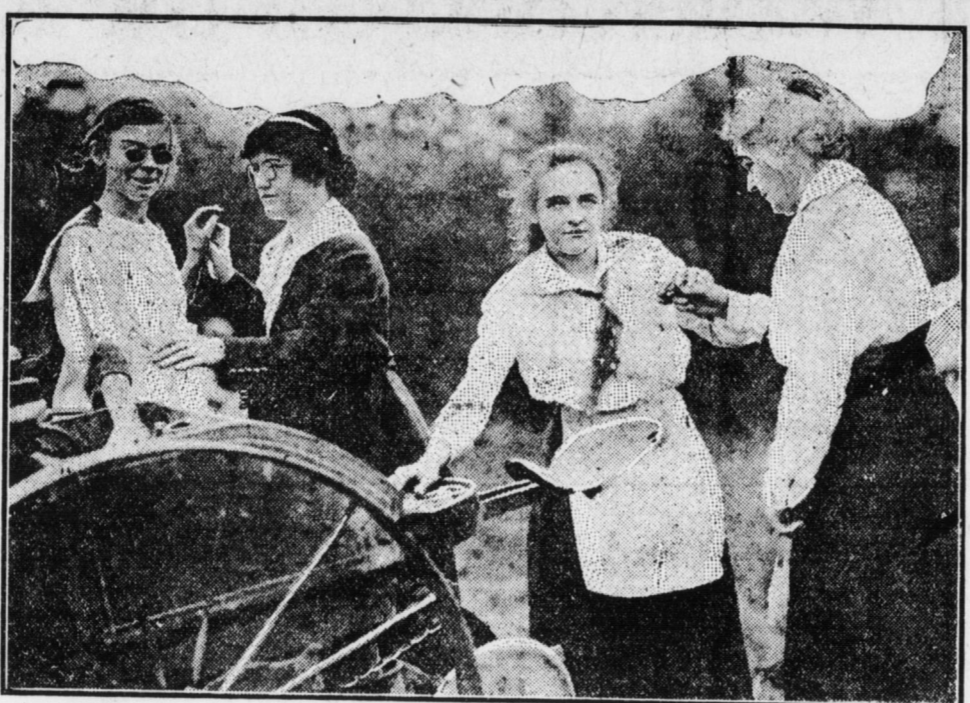
Lemon Juice For Freckles

Squeeze the juice of two lemons into a bottle containing three ounces of orchard white...

Standing of the Crews

HARRISBURG SIDE Philadelphia Division.—The 111 crew to go first after 1 p. m.: 104, 113, 117, 130, 114, 102, 118, 106...

ALTHOUGH UNABLE TO SEE, HEAR OR TALK THEY NEVERTHELESS ARE DOING THEIR BIT



Although unable to see, hear, or talk, Miss Kathryn Frick, a native of this city, shown in the above picture with her hand on the cart, and Miss Grace Pearl, on the extreme left, are familiar with current events...

BLIND GIRLS WORK ON FARM

Kathryn Frick and Another Mt. Airy Girl Watch Current Events

Unable to see, hear or talk, Miss Kathryn Frick, daughter of Mr. and Mrs. William L. Frick, 94 North Seventeenth street...

PASSENGER DEPARTMENT

Middle Division.—Extra engineers marked up at 12.01 p. m.: W. C. Graham, G. C. Keiser, H. E. Crum, S. H. Alexander, W. D. McDougal, F. McC. Buck, O. L. Miller...

THE READING

The 17 crew first to go after 2.30 o'clock: 55, 52, 51, 55, 73, 61, 70, 66. Engineers for 51, 55, 66, 22. Conductors for 51, 55, 66, 22. Flagmen for 17, 22. Brakemen for 51, 55, 59, 66, 17, 20, 22...

ENOLA SIDE

Philadelphia Division.—The 220 crew first to go after 1.45 p. m.: 204, 205, 219. Brakemen for 204, 219. Conductor up: McComas. Brakeman up: Eickelberger.

ALTOONA DELEGATION COMING

Superintendent N. W. Smith, of the Middle Division of the Pennsylvania Railroad, will head a large delegation from Altoona, attending the big Friendship club meeting to-night...

RAILROADS TO PROTECT CREDIT

Ask Fair Consideration of Questions of Vital Consequence

Baltimore, May 24.—The National Association of Owners of Railroad Securities, having for its object the protection of credit...

CLERK TO GO TO FRANCE

George W. Pressley, a former clerk in the local bureau of information at the Pennsylvania railroad station...

RAILROAD NOTES

William Schell, clerk at the Bureau of Information, Pennsylvania railroad station, who has been ill, returned to duty to-day.

RAILROAD NOTES

The Pennsylvania railroad inspection car is located at York until further notice. Figures for March give operating railway revenues as \$317,987,310. Expenses totaled \$229,020,175.

State Registration Headquarters Open

Headquarters were opened to-day in the Franklin building Walnut and Court streets this city for the registration under the selective draft.

TRY THIS TO BANISH ALL RHEUMATIC PAINS

People who have been tormented for years—yes, even so crippled that they were unable to help themselves—have been brought back to robust health through the mighty power of Rheumal.

Must Not Sell Liquor to Men in State Service

Major E. E. Hollenbach, in command of the district patrolled by the part of the First Pennsylvania infantry in federal service in Central...

TO HOLD FUNERAL HERE

R. Q. King, of Weehawken, N. J., who died yesterday will be buried at 2 o'clock Saturday afternoon from the Methodist Church, Marysville. Burial will be made in the Chestnut Grove Cemetery.

Soutter's 25c Dept. Store

Buy Here Not Alone Because Prices Are Low, but Because Qualities Are Better

The Week-End always develops many needs that require urgent attention. With the belief that this store can best fill those needs, we have organized this Week-End Sales Event.

- Miscellaneous Every Day Needs: Ladies' Neckwear, Giffon, Organize and Crepe Novelties, at Special Prices. Ladies' Handkerchiefs, 3c and up. Toilet Articles, special values and large assortment.

- Ready-Made Wear: Ladies' Gingham Aprons, 10c, 12 1/2c, 15c, 18c and 25c. Children's Rompers, 25c. Boys' Dutch Suits, 25c.

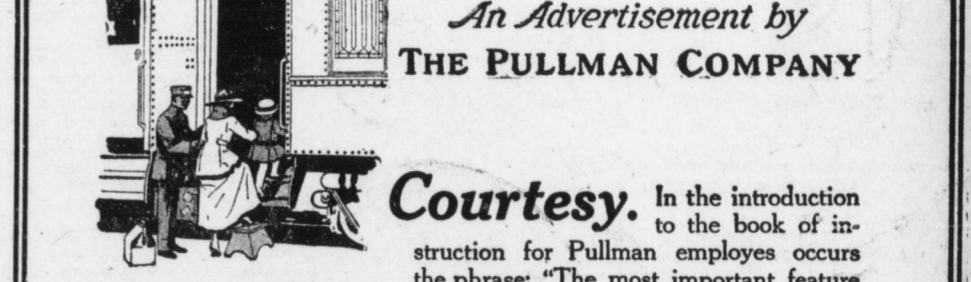
- Men's Wear: Extra Values Are Offered in the Men's Needs of the Men Folks. Men's Summer Face Ribbon, shirt collars, all sizes, 12 1/2c, 15c, 18c and 25c.

MILLINERY EXCEPTED 25c DEPARTMENT STORE

SOUTTER'S 1c to 25c Department Store

Where Every Day Is Bargain Day 215 Market St. Opposite Courthouse

An Advertisement by THE PULLMAN COMPANY



Courtesy. In the introduction to the book of instruction for Pullman employees occurs the phrase: "The most important feature to be observed at all times is to satisfy and please passengers..."

Such personal service cannot be instantly developed; it can be achieved only through years of experience and the close personal study of the wide range of requirements of twenty-six million passengers.

To retain in the Pullman service experienced car employes of high personal qualifications, pensions are provided for the years that follow their retirement from active service...

A further inducement in which civility and courtesy are counted of great importance, is the award of an extra month's pay each year for an unblemished record.

To You Who Have Children and No PIANO

Or to you who have been waiting to get a Player-Piano—we give notice that beginning today and continuing throughout the week—we will have on sale at prices you will be glad to pay, an unusually large number of fine instruments, some new and others very little used.

If you want a piano for the children or a player-piano for yourself, see these bargains AT ONCE; they won't last long, that's sure.

- 10 Slightly Used Uprights: All high-grade makes, completely rebuilt and fully guaranteed. Priced at \$85, \$115, \$125, \$140 and up to \$190 for the best.

J. H. Troup Music House Troup Building 15 South Market Square

The Bargain Spot in Harrisburg During Alterations Kindly Use 4th Street Entrance THE BUSY CORNER GREENE'S MARKET STS. 4TH AND MARKET STS.