

**SALE: Sat. May 12<sup>th</sup> 1.30 P. M.** **BLOSSOM TIME SALE: Sat. May 12<sup>th</sup> 1.30 P. M.**

IN

*Estherton*  
 ... RIVER DRIVE ...  
 E. M. HERSHEY, OWNER

== YOUR SUBURB ==

We Invite You To Attend Our Blossom Time Sale  
**Saturday, May 12th**  
**Sale Opens at 1.30 P. M.**

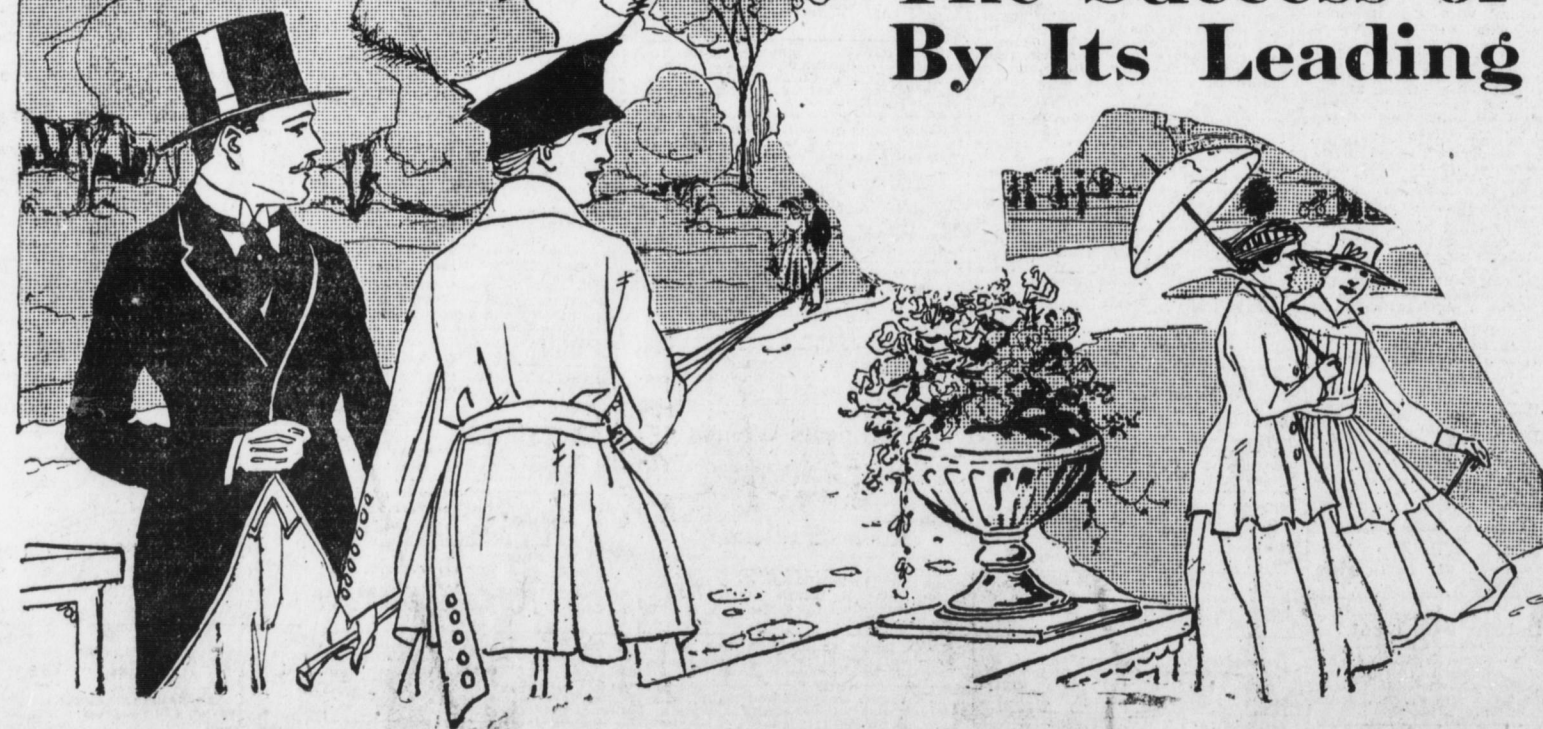
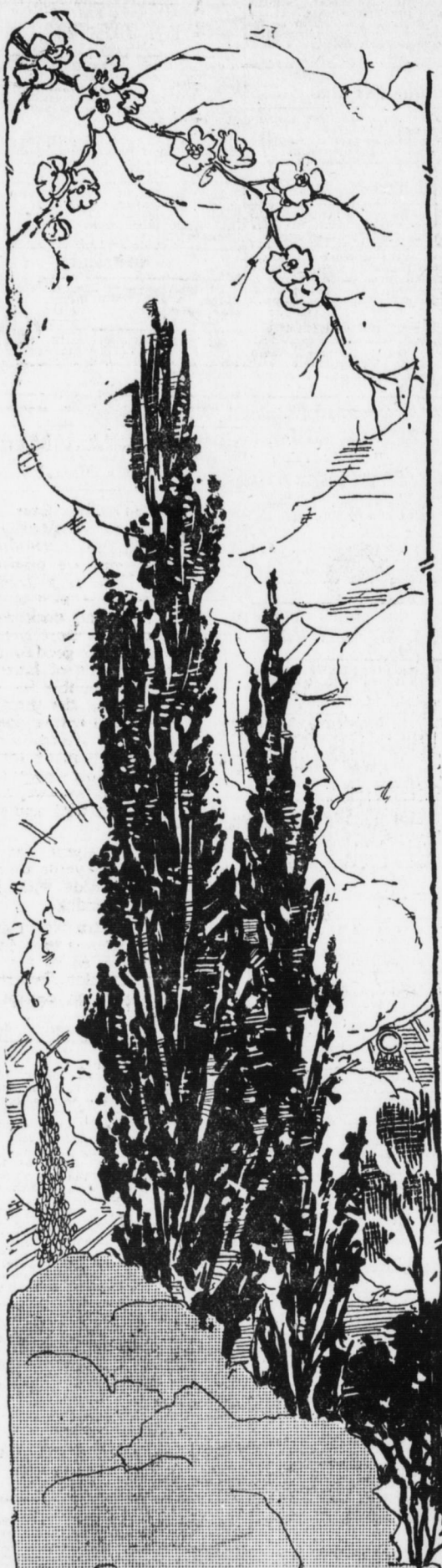
*A Rockville Car Will Take You to the Ground Every Twenty Minutes*

We Offer You an Exclusive Refined Sub-  
 Division Approved by the City Planning  
 Commission—A PERFECT CITY LAYOUT

**At Your Own Terms**

The Success of Estherton Is Guaranteed  
 By Its Leading Thoroughfares---Namely

RIVER DRIVE, Widened 37 feet  
 SECOND STREET, 80 feet wide  
 GREEN STREET, 120 feet wide  
 FOURTH STREET, 80 feet wide  
 FIFTH STREET, 60 feet wide  
 SIXTH STREET, 80 feet wide  
 EDWIN and ESTHERTON Avenues  
 Connect River Drive With Sixth St.



**For Special Appointments, Call Bell 4117R; Dial 3573**

OFFICE: Security Trust Bldg.  
 36 N. 3rd Street

Wm. J. SOHLAND, Mgr.