

HOW BOY SCOUTS HELP RED CROSS

Specially Trained, They Co-operate With Relief Organizations Throughout Country

Dr. Ernest P. Bicknell, director general of the American Red Cross, and a member of the executive board of the Boy Scouts of America, has been in conference with other officials at the Boy Scout headquarters this week, working out definitely the plans proposed for the co-operation of the 268,000 scouts and scout officials with the Red Cross in its war work.

Dr. Bicknell is enthusiastic about the prospects of efficient aid by the Boy Scouts of America in various branches of Red Cross work. In the first place every Boy Scout receives in his regular scout training instruction and practice in first aid and life saving, and many scouts have gained such high efficiency in first aid that they have obtained the merit badge which the Scout movement offers.

The second factor making for efficient co-operation with a great relief organization like the Red Cross, is that the Boy Scouts, wherever located, in big cities or in hamlets, are organized in definite groups and are under responsible adult leadership. This leadership can be quickly reached with information and instructions from national headquarters. Thus it is that more than a quarter of a million men and boys with special training become direct workers of the National Red Cross in the work it has to do to meet its tremendous and steadily increasing responsibilities in war time.

Naturally, of course, the service of local groups of this kind can be given more effectively in co-operation with the local chapters of the American Red Cross, and local scout leaders everywhere will acquaint themselves immediately with the local Red Cross committee on foods.

In working out the plan, it has been discovered that members of the Boy Scouts of America might be utilized in assisting surgical dressing committees, motor committees, by acting as orderlies in motor ambulances or supply trucks, distributing notices to inhabitants, and other duties in connection with billeting and carrying communication on bicycles, motorcycles, horseback or on foot; assisting committees on foods; collecting information as to supplies, preparing quarters for this service, assisting in collecting, preparing and serving food and refreshments to sick and wounded soldiers, assisting first aid committees in the preparation of quarters, as aides in first aid work, and as assistants at dispensaries, acting with information committees, as guides, orderlies, clerks, collectors of information, as to public or private hospitals available, buildings available in case of emergency, location of public telephones, listing of automobiles, trucks, etc.

It will be for the local chapters of the American Red Cross to make known the ways in which the services of these alert boys can be used to best advantage in our country's case now.

DRY-DOCKING SHIPS ON RAILS TO MEET CONGESTION

With the increasing demand for ships, due to the present day shipping situation, American vessels are being used to their full capacity. For the purposes of safety, frequent overhauling becomes necessary, which because of the crowded condition of American shipyards, requires dry docking. Limited facilities for this purpose have led American shipowners to put into use what is known as a "railway dock" more extensively than heretofore. Economy of time and expenditure are controlling factors in this dry docking system, which is capable of handling even the largest of ships.

The railway dock is built on a track, resting on firm foundations and constructed on an incline. When the vessel has been placed in position, being held by keel blocks and bilge supports, the operation of dry docking is accomplished by powerful hoists, which haul the dock up the incline track. The largest of the railway docks can accommodate a ship of 4,000 tons, and docking a vessel is a matter of not more than an hour, while it sometimes takes five hours in the ordinary basin dock to lift a ship out of water.—From the Popular Mechanics Magazine.

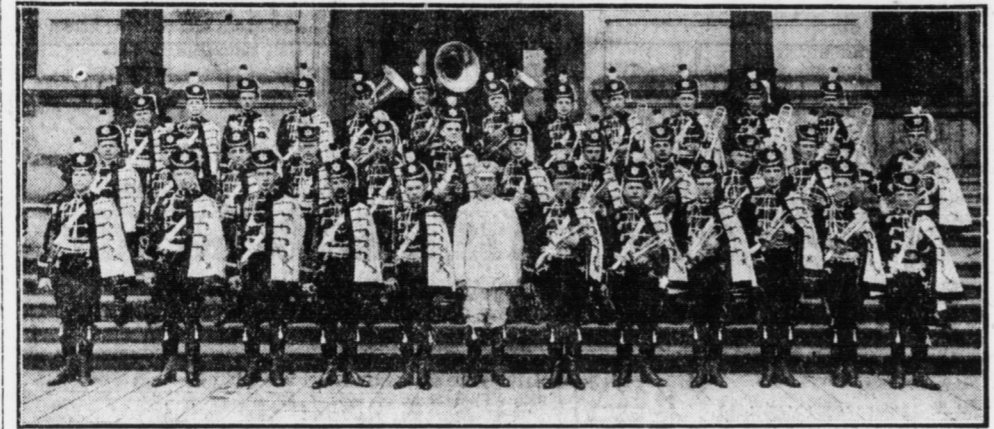
EXCAVATE HISTORIC SPOT

London, May 4.—Americans connected with the American Mining Company's works on the island of Cyprus are defraying all the expenses of archaeological excavations which have been begun at Arso, near Tremithousa. The work is in charge of the Cyprus Museum. The spot chosen is an interesting one, connected with the great Adonis myth.

Bringing Up Father



MUNICIPAL BAND WILL PLAY AT GREAT RECEPTION HERE FOR "PAPA" JOFFRE AND HIS STAFF TUESDAY



MUNICIPAL BAND IN NEW UNIFORMS.

The Municipal Band of Harrisburg, Frank Blumenstein, conductor, has been engaged by the Mayor and his staff to play for the reception of "Papa" Joffre in this city next Tuesday, when the French Marshal and his staff will visit Harrisburg.

The Municipal Band is rapidly gaining a reputation as one of the best bands in the State. Seven of its members have joined the Eighth Regiment, Pennsylvania National Guard, among them David M. Clark, who will lead the band, B. W. Jerauld, E. W. Shaffner, R. T. Robinson, W. B. Springer, Harry J. Runkle, and Julius C. Cohen.

The American Red Cross to make known the ways in which the services of these alert boys can be used to best advantage in our country's case now.

THIS MACHINE PACKS SILAGE SO THAT LITTLE SPOILS

A machine for packing silage in a silo has been invented and tried out by an Iowa farmer. This mechanical packer, described in the Popular Mechanics Magazine, does away with the disagreeable task of tramping the feed down with the feet. It also does the work much more satisfactorily for the machine weighs a ton and is able to pack the silage close to the wall as thoroughly as in the center. The looseness of the material around the edges, which often results when silage is packed by tramping, is a source of considerable loss because the air gets into the fodder and causes it to spoil. This machine is equipped with a heavy cone-shaped roller whose length is about equal to the diameter of a silo. It is driven in a circular course by a gasoline engine mounted on the supporting frame. The packer can be quickly knocked down into parts,

few of which weigh more than 100 down the silo chute.

HOUSE WITH DOUBLE ROOF TO RESIST HEAT

By adopting some tropical ideas of house building, a Florida land-owner has constructed on the banks of the Miami river, a dwelling that promises the maximum of comfort in summer. The house is described in the Popular Mechanics Magazine. It is of a simple two-story frame design, with low-pitched roof, but the roof is double, with a considerable

JAIL MANY SLACKERS

London, May 4.—During the past year 3,700 conscientious objectors to military service were arrested and court-martialed by the British military authorities. Of these 1,500 are now in prison or military custody. Most of the remainder are employed, under the supervision of the Home Office, on agricultural work, road making, timber cutting or quarrying.

YOUR EYES

Are you giving them the proper attention. Most anyone by a few simple tests could tell that your eyesight was defective and that you need glasses of some kind but to tell you the trouble and fit the proper lenses requires more than ordinary skill. I have made this one thing a study and correct eye defects by looking into the eyes with modern appliances, taking the exact form and shape.

Commencing Saturday, April 28, and ending at 8 p. m., Sunday, May 6th, I will examine the eyes and fit you with guaranteed gold filled, mounted and spherical lenses, all complete, for

\$2.00

Made in either spectacles or nose glasses. If you are having trouble with your eyes or your glasses do not suit you take advantage of this special offer, which will end Saturday, May 5, at 3 p. m.

H. W. NORRIS

EYESIGHT SPECIALIST
310 MARKET ST.

Over new store of Wm. Strauss, Hours, 9 A. M. to 8 P. M. Established in Harrisburg continuously for 12 years.

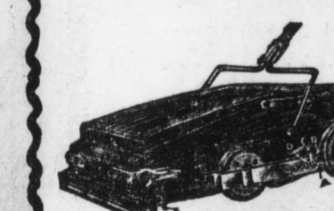
BROWN & CO.—Home Furnishers

1217-1219 North Third Street--Liberal Credit Terms to All

We are doing our bit in keeping prices down to those low levels which allow our customers to get the home furnishings this spring which are needed without the heavy strain.

Combination Vacuum Cleaner and Sweeper

\$1.00 Down
50c Weekly



Special Carpet Sweeper

Sale Price \$1.95

Phonographs



"The Celebrated Rishel" better than the best. Come in and hear them—sold on easy terms.

Bamboo Tabourets

Sale Price 59c



Just the thing to set your flowers on this summer.



A SPECIAL LOW PRICE SALE THAT MEANS BIG SAVINGS TO YOU

<p>Men's Classy Spring Shoes \$3.95 REAL \$5.00 VALUES</p> <p>18 classy new styles in narrow English and modified toe lasts; tan calf, gun metal and vicid kid. Button, straight lace and blucher. Welt soles. All sizes.</p> <p>\$3.95</p>	<p>Women's Low Shoes Colonial pumps, strap sandals and oxfords in dull, patent and white canvas. All sizes. Real \$4.00 values \$2.95</p>	<p>Comfort Shoes For women. Soft vic tops; flexible leather soles; cushion insoles; rubber heels. All sizes; \$3.50 values \$2.95</p>	<p>Women's \$4 Shoes Mostly all sizes. Special for tomorrow .. \$1.95</p>	<p>A SPECIAL SALE OF Women's Boots</p> <p>\$5.00</p> <p>Genuine Spring Styles</p> <p>Strictly new patterns in dozens of popular, pretty styles. High lace in gray, ivory, champagne with white tops; patent with champagne tops; all patent and dull and several smart styles in button, lace and English. All sizes. A real \$7.00 value, at</p> <p>\$5.00</p>
<p>Men's \$4 Dress Shoes Several good styles in patent, dull calf and gun metal. Lace and button. All sizes. Genuine \$4 values; at \$2.95</p>	<p>Men's Stout Work Shoes; \$2.45 Regular \$3.50 Values</p> <p>Solid stout Work Shoes of tan and black grain. Blucher (like cut) with bel-tongues. All sizes.</p> <p>\$2.45</p>	<p>Girls' White Shoes & Pumps</p> <p>Again we offer misses' and children's \$1.75 white canvas shoes and Strap Sandals at \$1.25 a pair. Dainty styles. Strong leather soles. All sizes to 2.</p> <p>\$1.25</p>	<p>Infants' Shoes Comfortable, toe-room lasts of soft black kid. Button styles. Sizes to 5 1/2; 75c values, 59c</p>	<p>OUR BUSY CHILDREN'S DEPT.</p>
<p>Boys' Elk Shoes Serviceable, comfortable makes of strong elk skin. All sizes to 2. Actual \$2 value \$1.50</p>	<p>Little Boys' Shoes Sizes to 12 1/2. Strong black calf; solid soles. Lace or button. Regular \$1.50 value, \$1.25</p>	<p>Girls' White Top Shoes</p> <p>Patent leather Vamps with white canvas top. Lace and button. Sizes 1 1/2 to 2, at \$2.45; up to 11, at \$1.95</p>	<p>Girls' Spring Dress Shoes</p> <p>Neat, best wearing spring styles in dull kid tops — and patent with cloth and strong leather soles. All sizes to 2 — \$2.50 values, \$1.95</p>	<p>BOYS' STRONG DRESS SHOES</p> <p>Tan, patent and blucher. In lace and button. Well made, good wearing spring styles. All sizes to 5 1/2, at \$2.50 values, \$1.95</p>

pink cheeks

When a girl's color fades and she looks debilitated, is short of breath, when her heart palpitates after every slight exertion and she has pains in various parts of the body she needs a good tonic.

Dr. Williams Pink Pills for Pale People

are the remedy best suited to restore the blood, bring brightness to the eyes and put color in cheeks and lips. As they contain no alcohol or harmful drugs they are safe at any age and their tonic action is always helpful. Your own druggist sells these pills.

Two books, "Building Up the Blood" and "What to Eat and How to Eat" give just the information that every mother of a growing girl needs. They are free. Write for them today. Address: **Dr. Williams Medicine Co., Schenectady, N. Y.**

Both Men and Women

New Detroit Electric

5-passenger—gray cloth upholstery.

Has never been used and will be sold at a sacrifice price.

Inquire of **A. H. Shader**
101 MARKET ST.

Southerland Sisters, Demonstrators,
at Keller's Drug Store For Ten Days
Tell Them About Your Hair Troubles
405 MARKET STREET CONSULTATION FREE

22 Stores in Pennsylvania, Ohio and West Virginia

BOOK'S REAL SHOE MAKERS

217 Market St., Opposite Courthouse

Spring Footwear AT LOWEST PRICES IN HARRISBURG