

Railroad Notes

Loading at the Market street entrance to the Pennsylvania railroad station will be prohibited in the future. The iron railing has been removed and shrubbery planted.

Repairs have been made to the swinging doors at the Pennsylvania railroad station.

On May 12 the Philadelphia Division Gun Club will give a return shoot to the Harrisburg Sportsmen's Association at Second and Division streets.

Valentine Schand, age 39 years, engineer on the Reading division of the Philadelphia and Reading Railway, was run down by a shifting engine at Reading yesterday and killed.

The Reading is hauling an average of forty-five carloads of pipe each day from the Reading iron company.

Increased freight rates on canned goods shipments from the west have been postponed until August 29.

Bad Stomach Trouble

Yields to Delicious Vinol

Shreveport, La. — "I had a bad stomach trouble for years and became so weak I could hardly walk or do any work. My appetite was poor, my food would not digest, I bloated and was very weak and nervous. I tried many remedies without help. I saw Vinol advertised and tried it and now my stomach trouble is completely cured and I am well."—E. L. Marshall.



Vinol is guaranteed to tone up the tired, over-taxed and weakened nerves of the stomach and create strength.

George A. Gorkas, druggist, Kennedy's Medicine Store, 221 Market St., C. F. Kramer, Third and Broad Sts., Kitzmiller's Pharmacy, 1522 Derry St., Harrisburg. Also at the leading drug stores in all Pennsylvania towns.

This Power Behind the Strong Vigorous Iron Men of Today

Dr. Ferdinand King, a New York City Physician and Medical Author, says: "There can be no strong, vigorous iron men nor beautiful, healthy, ruddy-cheeked women without iron. I have taken three times per day after meals will increase the strength and endurance of weak, nervous, run-down folks 100 per cent. in two weeks' time in many instances. Avoid the old forms of metallic iron which may injure the stomach and cause the stomach, and thereby do more harm than good. Take only organic iron—Nuxated Iron. It is dispensed in this city by Croll Keller, G. A. Gorkas, J. Nelson Clark and all good druggists.—Advertisement.

CREME LILAS
Non-greasy Toilet Cream—Keeps skin soft and Velvety in Rough Weather. An Exquisite Toilet Preparation. 25c.

GORKAS DRUG STORES
16 N. Third St. and P. R. R. Station

Splash!

and your new spring suit is a mess. Isn't it exasperating?

There's just one thing to do in such cases—send the garment to us for faultless dry cleaning.

Attempting such work yourself may only make a bad matter worse.

Any kind of spot in any kind of material quickly removed by our faultless process without damage to color or fabric.

Finkelstein
1322 North Sixth Street
1134 Market Street
Both Phones

**RAILROAD RUMBLER
EXPERT SHOTS
PENNSY NEED
TRAFFIC KEEPS
TRAINS MOVING**

All Officers Must Know How to Use Revolvers Says Captain Paul L. Barclay

Marksanship will be a big factor with Pennsylvania Railroad police, starting with to-day. Captain of Police Paul L. Barclay wants his men to be able to shoot with both rifle and revolver. He does not want them to shoot promiscuously, but when shots are required he wants them to count. Commencing with to-day squads will be sent to Mt. Gretna at intervals for practice. Each officer will be required to qualify within a certain time. Practice starts first with revolver shooting. Rifle practice will come later. Captain Barclay said to-day:

Must Be Good Marksman
"All policemen should be good marksmen. It is not necessary to kill. Sometimes a bullet in the leg will bring better results. Killing is the last resort, when a man's life is in jeopardy. We must capture the fugitives who try to get away. With the target practice will come instructions as to how an officer should behave when the use of a revolver is necessary. Sometimes he must shoot with other people around. A good marksman is able to bring down his quarry without endangering the lives of others. You must know how to use a revolver effectively on all occasions.

Rifle Shooting
"Rifle shooting is not a necessity with railroad officers at present, but if they call all soldiers from present guard duty to go abroad or take up army duty elsewhere, it will be necessary for railroad officers on duty at bridges and munition plants and along the railroad to be equipped with rifles as well as revolvers. It will not be a waste of time for officers to learn how to shoot effectively with a rifle as well as revolvers."

ENGINE EXPLODES, KILLS FIVE
Philadelphia, May 2.—Five men were killed here late last night when a freight locomotive was blown to pieces by a bursting boiler in the West Philadelphia yards of the Pennsylvania Railroad. Low water in the boiler was given as the cause. All the victims were employees of the company.

FOUR WOMEN TESTIFY

Positive Proof that Lydia E. Pinkham's Vegetable Compound Restored Their Health

Yonkers, N. Y. — "I suffered from a bad case of female trouble, backache, nervousness and indigestion. Lydia E. Pinkham's Vegetable Compound restored my health after everything else had failed."—Mrs. H. J. L. Feather, 61 Hamilton Ave., Yonkers, N. Y.

Exelle, Ill. — "I would not be alive to-day had it not been for Lydia E. Pinkham's Vegetable Compound as it cured me from a severe case of female trouble."—Mrs. O. A. Coe, Batestown Road, Danville, Ill.

Ridgway, Pa. — "I wish all women who suffer from female troubles would take Lydia E. Pinkham's Vegetable Compound as I avoided a surgical operation by its use."—Mrs. O. M. Rhines, Ridgway, Pa.

North Haven, Conn. — "Lydia E. Pinkham's Vegetable Compound restored my health after everything else had failed when passing through a case of life. There is nothing like it to overcome the trying symptoms."—Mrs. Florence Isella, Box 197, North Haven, Conn.

The many convincing testimonials constantly published in the newspapers ought to be proof enough to women who suffer from those distressing ills peculiar to their sex that Lydia E. Pinkham's Vegetable Compound is the medicine they need.—Adv.

Middle Division Movement During March Was Heavy; Not Up to Record

While not up to previous records when freight business was conducted without interruptions in way of congestions and war orders, traffic on the Middle Division of the Pennsylvania Railroad last month was heavy. Officials say it was possible to handle more cars, but they are pleased with results. April is normally a busy month for freight traffic. The total number of freight cars passing over the Middle division of the Pennsylvania Railroad last month was 183,592, or 13,001 less than March, and 24,864 less than in April of 1916. The average daily movement of freight cars was 6,148. The eastbound track was passed over by 85,847 cars, while 90,654 were bound westward. Of this total 110,222 were loaded and 15,432 empty. During March 198,903 cars passed over the division with an average movement of 6,419 cars a day. Of this number in March 115,956 were loaded. April of 1916 was one of the banner months and during that period a total of 219,158 freight cars passed over the division, for a daily average of 7,105.

Not Ready For Women Until Officials Report

Local railroad officials were unable to say when the plans for employing women would be put in operation. General Manager Elisha Lee, in his statement yesterday, said general superintendents will first make a survey to ascertain what positions the women may best fill. Until they report, and conditions warrant, no action will be taken here. General Manager Lee says:

"No man will be dropped from the payroll to make way for women, although some may be called upon to change the form of their occupation. Stenography, typewriting and practically all other kinds of clerical work will be open to women at once. This will apply not only at the general offices in Philadelphia, but also at all other offices where large clerical forces are employed, including agencies, freight stations and transfer.

The investigation to be conducted by the general superintendents will also be directed to ascertaining whether or not girls and women may be advantageously employed in other positions, including the lighter forms of machine shop work, telegraphy, telephony, signaling, train dispatching, ticket selling and car cleaning."

Standing of the Crews

HARRISBURG SIDE
Philadelphia Division — 123 crew to go first after 4 p. m., 130, 132, 113, 102, 112.
Firemen for 122, 103.
Conductor for 103.
Flagman for 122.
Engineers for 102, 112.
Engineers up: Hubler, Reisinger, Keane, Schwartz, Downs, Burkeley, Howard, Anderson, Hogantogler, A. K. Steffy, Baer.
Firemen up: Hughes, Zoll, Herman, Waldon, Shrimp, Bowersox.
Conductors up: Hooper.
Brakemen up: Crosby, Dougherty, Wilt, Stone, Thompson, Miller, Smith and Arter.

Middle Division. — 381 crew to go first after 2:30 p. m., 229, 232, 235, 219.
Laid off: 24, 30, 17.
Preference 19, 4, 3.
Engineers for 4.
Engineers up: Corder, Rensel, Al-bright, Ford, Buckwalter, Numer, Asper, Teterner, Kline, Burris, Nick-ew, Gillzard.
Firemen up: Keneday, Coyte, Reeder, Bretz, Yohn, Markle, Alcorn, Tiffany, Jr., Smith, Orr, Stewart, Bit-ling.
Conductors up: Dettrow, Heiner, Glace, Coup.
Brakemen up: Hetrick, Sweger, Blessing, Farleman, Knight.

YARD CREWS

Engineers up: McCord, Hefleman, Ush, Fulton, McMorris, McDowell, Runkle, Wise, Watts, Cleland, Good-man, Harling, Sayford, Matson, Beck-with, Machamer, Gibbons, Cless, Ewing.
Firemen up: Henderson, Selway, Jr., Gilbert, Laurer, Dill, Gormley, Wirt, Klineyover, Mountz, J. E. Laurer, Bartless, Shyer, Shier, Dahl, Shoop, Swab, Hoover, Holtzman, Rice, Hardy, Bruaw, Ziegler, P. S. Smith, Vinchitz, Rodenhafer, Black, G. K. Smith, Hove.
Engineer for 56.
Firemen for 36, 64, 40.

PASSENGER DEPARTMENT
Middle Division — Enginemmen marked up at 12:01 p. m.: Miller, Keane, Sparver, Crane, Crommel, T. D. Crane, Graham.
Enginemmen for 569.
Firemen up: Holtzman, Winand, Dvingsler, Hartzel, Bowman, Kolier, Klinger, Graham, Dewees, Flick-inger, Murlat, McComas.
Brakemen up: Lacey.
Conductors up: Kelfer, Danner, Brakemen up: Reidel, Peters, Mosey, Craie, Walter, Fillmore, Lehmer, Stiefried, Sipe, Pass, Nic-cie, Keener, Newine, Shearer, Gard-ner.

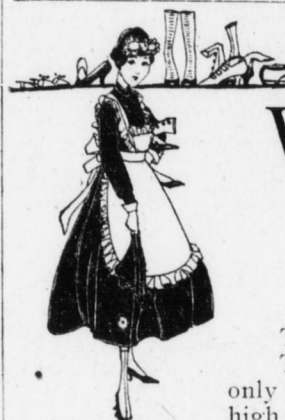
THE READING

Harrisburg Division — 14 crew to go first after 1:45 p. m., 17, 15, 10, 18, 19, 11, 4, 3, 12.
18 crew to go first after 11:45 a. m., 63, 65, 52.
Engineers for 11, 24.
Firemen for 3, 10, 11, 15, 17.
Conductors for 4, 18.
Brakemen for 52, 63, 65, 3, 4, 12, 17, 24.
Engineers up: Laudig, Bowman, Griffith, Petrov.
Firemen up: Slattery, Goshorn, Heinaman, Gaegler, Bryan, Gouffer, Swartz, Bittling, Helsey, Enders, Klinger, Eshinger, Smith, Eisler, Dis-borow.
Conductors up: Kelfer, Danner, Brakemen up: Reidel, Peters, Mosey, Craie, Walter, Fillmore, Lehmer, Stiefried, Sipe, Pass, Nic-cie, Keener, Newine, Shearer, Gard-ner.

ENOIA SIDE
Philadelphia Division — 221 crew to go first after 3:45 p. m.: 240, 232, 209, 228, 220, 206, 235.
Engineers for 232, 228.
Fireman for 240.
Conductors for 32.
Flagman for 20, 35.
Brakeman for 2nd 40.
Conductors up: Dewees, Flick-inger, Murlat, McComas.
Brakeman up: Lacey.
Middle Division — 250 crew to go first after 3 p. m.: 237, 245, 250, 252, 108, 231, 222, 224.
Laid off, 110, 115.
Yard Crews—
Engineers for 1st 108, 130, 2nd 102, 110.
Firemen for 1st 108, 2nd 108, 132.
Engineers up: Nuemyer, Rider, Hill, Boyer, Kling, Smith, Brantlyn, Firemen up: Snyder, Wolf, Walsh, Eichelberger, Brown, Hubert, Rice, Brandt, Reed, Myers, Arndt, Holsin-ger, Backstote, eYtlor, Noss, Al-bricht, Mallock.

Everyone Should Wear Old Glory
Showing at our Jew-elry section fine lapel pins of the American Flag that can be worn on any clothing—every man, woman, boy and girl should have one.
5c, 10c, 15c to \$1
BOWMAN'S—Main Floor

An Important Glove Offering at 50c a pair
Real Venetian and Milanese 2-clasp lisle gloves in black, white, navy, brown and tan—all sizes
BOWMAN'S—Main Floor



Pumps at \$5.00

Women's pumps of fine kidskin in black, taupe and Havana brown; leather Louis heels and light welt durable-soles — fit perfectly.

1,000 yards of Torchon lace, filet lace and cluny; 2 to 4 inches wide; a yard, ... 5c

White and ecru Venise edges; ½ to 1½ inches wide; several assort-ments; a yard, ... 10c to 39c

Batiste embroidery edges; 4 to 12 inches wide — an assorted lot under-priced; a yard, ... 17c

Swiss embroidery flouncing; 27 inches wide — limited quantity on sale tomorrow, at a yard, ... 45c

Fine cambric embroi-dery edges in very hand-some patterns; 4 to 6 inches wide; a yard, ... 8c

Sale of Women's Neckwear

Several hundred pieces of manufacturer-dis-carded Georgette crepe neckwear — or selected seconds— Neckwear that is slightly imperfect in the finishing, such little flaws as dropped stitches — the lace applied hardly straight — the round shapes a little out of proportion; only minor flaws; some of which you could hardly detect.

Less Than Half Price, 25c
BOWMAN'S—Main Floor.

Bing-Bang Cannon

Harmless—safe—sane—no matches—no powder—no danger. It is positively the safest and sanest big "fun and noise maker" in existence. Ammunition is plain ordinary water in the hollow axle, and pulverized carbide which is with each cannon in the ammunition case. If you want to make noise with safety use a "bing-bang" cannon.

Junior Defense Cannon, \$1.00
Junior Field Cannon, \$1.50
Major Field Cannon, \$2.00
Siege Field Cannon, \$3.00
BOWMAN'S—Basement.

Sale of Toilet Requisites

Special Lazell Toilet Waters
Japanese Honcysuckle, Vio-lette de Parme and Field Vio-lette; bottle 39c

Talcum
Special Wistaria in large 10-ounce can, 21c

Browns Japonita, Jess, Vio-let Simplicity and Dixie Bloss-om; jar 17c

Cold Cream and Vaseline
Usola; fine quality; jar, 13c
Amber color Vaseline, in plain, mentholated and cam-phorated; jar, 4c
White Vaseline; fine grade, in plain, mentholated and cam-phorated; jar, 8c

Tooth Paste
Albadon; large tube, ... 17c
White's; very fine, ... 16c

Soaps
Peroxide Bath Soap 7c cake, 3 cakes 20c.

Extra Special
Ivory Candle Sticks, com-plete with shade and candle, in pink, blue, yellow, red and rose shades, 49c

Sachets
Lilac, Tea Rose, Violette and Honey-moon; jar, 29c
De Luxe Powder Puffs, 10c
Face Chamois; large size, 7c
Emery Boards, 8c
Dolly Varden Chamois, 3c and 6c.
Ebony handled Nail Files, 17c
Knives, 17c
Steel Nail Files, 7c
Toilet Pumice 7c
Styptic Pencils 7c
Menthol Inhaler 7c
Nail Clippers, 21c
Colgates Cup Shaving Soap, 4c cake, 3 cakes 10c.

Mirrors
Long handles "Ebony"; ex-tra values, 25c
Large size Ebony and Ma-hogany finish, ring and long handles, 39c, 89c, \$1.43 and \$1.89.
Brushes
Long stiff extra quality bristles, Ebony and Mahogany finished backs 39c
Peroxide; bottle, 7c, 14c and 21c.
Lysterine; bottle, 10c, 17c, 34c and 67c.
Gauze bandages; 2-inch, 7c; 3-inch, 9c; 2 and 1-inch, 11c
Face Powders
Poudre de Riz; box, ... 23c
Poudre de Beaute; box, 17c

Bowman's

Washable Dress Fabrics

A splendid exhibit of all the new weaves and color effects in the most fashionable washable dress fabrics.

Introducing the new 36-inch non-krush dress linen — an imported fabric — comes in 15 colors; yard, \$1.00

Gabardine and corduroy—8 col-ors—are ideal for separate summer skirts. Yard, 50c.

36-inch Meadowbrook suiting—white ground with colored stripes —tricot and ribbon effect. Yd., 50c

36-inch "K-T" girl skirting — a brand new fabric with large spher-ical designs in multi-colors on pongee colored ground — closely represent-ing the popular Khaki-Kool sport silks; yard, 65c
BOWMAN'S—Main Floor

New Arrivals in Women's Smartest Footwear at Two Moderate Prices \$5.00---\$7.50

These shoes embody the acme of perfection and elegance in quality and looks. The stock they're made from is of such high grade that their select quality is apparent not only to connoisseurs, but to any one, however slightly acquainted with the requirements of these high class goods.

Pumps at \$5.00

Women's pumps of fine kidskin in black, taupe and Havana brown; leather Louis heels and light welt durable-soles — fit perfectly.

Boots at \$7.50

Women's "Napoleon" high-cut laced boots of fine glazed kidskin with light welted soles and leather French heels; battleship gray and Havana brown with golden brown tops; a handsome boot.

Beautiful Tailored Suits

The Higher Cost Models Now Reduced For Immediate Sale TWO GROUPS

\$25.00--\$35.00

The very choicest apparel from makers of national renown.

Suits of the highest character made from Gabardine, Poiret Twills, Poplins, Men's Wear Serges, Imported Novelty Worsteds and Mixtures

There are fancy models in all the high and fashionable color-ings — some with hand em-broidered collars and pockets—others with contrasting collars and cuffs — also the severely rich, plain tailored suits.

In this sale we also feature fashionable stout models — 40 to 48 bust measure — the finest creations — scientifically de-signed for fleshy women.

This is unquestionably a most unusual opportunity to choose from the highest class suits of distinction and quality at a price within the reach of every woman.



Featuring Silverware

And some low prices for a limited time.

Satin silver bread tray, en-graved center; fancy edge, \$1.49
Hammered silver bread tray; plain edge, \$1.49
Satin silver bread tray; beaded edge, \$1.79
Satin silver bread tray; plain edge, \$1.39
Sandwich tray; large size, \$1.98
Bon-bon dishes, \$1.39
Bon-bon baskets with square or oval handle, \$1.49
Marmalade jars, silver spoon, \$1.49
Marmalade jars, flower design, 39c
Two-bottle castor set, 19c
BOWMAN'S—Main Floor.

Better get busy with that garden! We'll help you by supplying good seeds—and the proper implements.