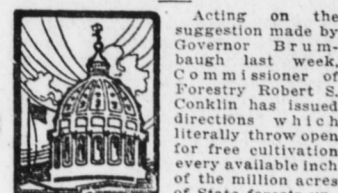


STATE LANDS OPEN FOR CULTIVATION

Forestry Commissioner Responds to Governor's Request



Acting on the suggestion made by Governor B. ...

Under certain restrictions the Department will even permit the clearing of State Forest land for farming.

Following is a list of nearby counties in which State forests are located.

Cumberland County—Pine Grove and Caledonia forests, 20,665 acres.

Franklin County—Mont Alto, Caledonia and Buchanan forests, 34,528 acres.

Huntingdon County—Barre, Brumbaugh, Greenwood and Rothrock forests, 57,285 acres.

Union County—McClure and Rothrock forests, 3,178 acres.

Enumerating Farmers—Farmers in all sections of Pennsylvania are receiving blank forms from the Bureau of Employment of the Department of Labor and Industry.

PARALYSIS PLAGUE SPREADS Copenhagen, April 14.—Frequent cases of infantile paralysis have been reported recently from outlying districts in Norway and Denmark.

SMALL FIRE Fire at the residence of Robert Walker, 1123 Cumberland street, shortly after 10 o'clock this morning, caused slight damage.

NEWS OF STEELTON



Mr. and Mrs. John T. Buser, will celebrate their fiftieth wedding anniversary at their home Monday afternoon.

STEELETON CHURCHES St. Mark's Lutheran—A Gettysburg theological student will have charge of services at 10:30 a. m.

First Presbyterian.—The Rev. C. B. Segelken, pastor, will preach at 11 a. m. on "Real Values" and at 7:30 p. m. quarterly communion will be observed.

Grace United Evangelical.—The Rev. David Yule, rector, 8 a. m. communion, 10 a. m. S. S., 11 a. m.; morning prayer and sermon, 7:30 p. m. evening prayer and sermon.

Steel Workers Give \$3 to Red Cross Society Employees at No. 2 force shop of the local steel plant presented the Steelton branch of the Red Cross Society with a purse of \$63.

Steelton Snapshots Burgess Wigfield III.—Burgess Fred Wigfield III. German Dance.—Germans of Steelton will hold a dance in Miller's hall in Mohn street, April 21.

Orthodox Churches to Observe Easter Week Observance of Easter in the Serbian and Bulgarian Orthodox churches for the next three days will be marked by special services.

WHEN YOUR CHILD CRIES at night and tosses restlessly, is constipated or has symptoms of worms, you feel worried. Mother Gray's Sweet Powders for Children is a tried and trusted remedy.

Geo. H. Sourbier Funeral Director BIO-NORTH THIRD STREET

ROOFLESS PLATE \$5 Crown and Bridge Work. \$3, \$4, \$5. Pines repaired while you wait. Come in the morning, have your teeth under the sun.

T. R.'S PLANS ALL THE NEWS OF THE RAILROADS

Administration May Consent to Sending Division to France This Summer

Washington, April 14.—Col. Roosevelt's plan to raise a division to fight in France, unless unforeseen obstacles come up, will receive approval.

Certain general staff officers are rather against the idea, on the ground that it would be impossible for Col. Roosevelt and his volunteers to be in shape for the trench warfare now being conducted by the best trained military brains of Europe.

There is also a strong sentiment in Congress in favor of Colonel Roosevelt's plan and in favor of a volunteer force to France anyway.

Railroad Notes The Sunday afternoon meeting at the P. R. R. Y. M. C. A. will be in charge of the Gospel Crew.

Enola Man Transferred C. W. Montgomery, of Enola, superintendent of Division No. 5, from east of Rockville bridge to Dock street, Harrisburg, to Division No. 19, Pittsburgh division, between East Portage and west end of Altoona yards.

Sixty-Two Gardens on Cottage Hill Disposed of in Several Hours Every garden plot on Cottage Hill, laid out by the local Civic Club was disposed of in several hours yesterday after Mrs. G. P. Vanier announced the sale of the lots.

MIDDLETOWN At a meeting of the Middletown Cemetery Association Thursday evening the following directors were elected: S. C. Young, S. C. Peters, B. F. Brandt, M. H. Gingrich, C. F. Beard, Eugene Lavery and Frank Nisley.

Highspire The Rev. H. F. Rhoad attended the funeral at Reading on Monday afternoon of the Rev. A. Lehman, a retired minister of the United Brethren Church.

When Your Child Cries at night and tosses restlessly, is constipated or has symptoms of worms, you feel worried. Mother Gray's Sweet Powders for Children is a tried and trusted remedy.

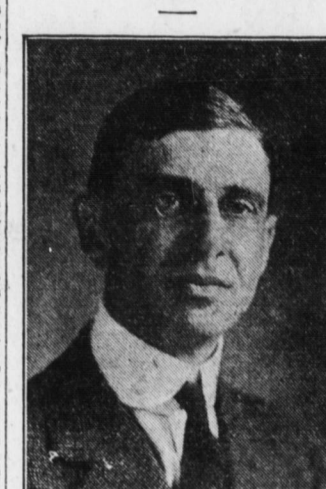
Roofless Plate \$5 Crown and Bridge Work. \$3, \$4, \$5. Pines repaired while you wait. Come in the morning, have your teeth under the sun.

Mack's Dental Offices 310 MARKET STREET

ALL THE NEWS OF THE RAILROADS

MANY CHANGES IN SUPERVISORS

C. Z. Moore, of Middletown, Goes to Middle Division; One Change at Enola



As a result of recent changes in division superintendents on the Pennsylvania Railroad lines, sweeping transfers were yesterday announced at Altoona in supervisors.

Reading Relief Payments The February report of the Philadelphia and Reading Relief Association shows receipts of \$29,723.26 and expenses, \$43,058.14.

Need Shifting Crews The Reading Railway Company is now handling over 300 cars of material and finished products from the mills at Coakville. It requires 20 shifting crews to look after this work.

Fair List Prices Fair Treatment

The 1917 Message to Ford Car Owners

GOODRICH 375 SIZE (3 1/4 INCHES) 375 BLACK SAFETY TREAD TIRES

HERE is the BIG NEWS of the YEAR for the owners of Ford Automobiles.

The B. F. Goodrich Rubber Company, having centered its 48 years' experience and knowledge directly on the problem of making the best tire for the Ford automobile, has brought forth a tire that fulfills the special needs of the Ford automobile, and doubles its virtues.

It is the tire for which Ford drivers have been waiting—a Ford car tire of HEROIC SIZE: GOODRICH "Three-Seventy-Five"

FRIENDSHIP CLUB TO JOIN PARADE

Special Meeting Called For Monday Night to Arrange For Demonstration

Harrisburg's Friendship and Co-operative Club for railroad men will be a part of the big patriotic parade next Saturday afternoon.

Old Glory Floats From Every Enola Building in Big Railroad Yards Enola, Pa., April 14.—Determined not to be outdone by their fellow employees in the Marysville and Harrisburg yards in regards to the patriotic decorations around the railroad property, the Enola yard employees have placed the stars and stripes on every building and pole in the yards.

New Middle Division Rule Superintendent N. W. Smith, of the Middle division, has issued the following order governing crews deadheading from Altoona to Harrisburg: "Effective at once, freight crews when deadheading east to Harrisburg must turn their timetables promptly on arrival."

Find Mangled Body of Trackman at North Street Frank W. Waltz, aged 57 years, 1512 Wallace street, a trackwalker employed by the Pennsylvania Railroad Company, was killed by a shifting engine last night, near the North street tower.

Private funeral services will be held from his late home on Monday evening at 7:30 o'clock, and will be conducted by the Rev. Dr. Lewis D. Mudry, pastor of the Pine Street Presbyterian Church.

SUES FOR \$25,000 Mrs. Katherine E. Eby to-day filed suit in the county court to recover \$25,000 damages from the Philadelphia and Reading Railway Company, because of the death of her husband alleged to have been the result of an accident in Reading, January 23, when he was crushed between two cars. The statement was filed to-day with Prothonotary Henry F. Holler.

Enola Man Transferred C. W. Montgomery, of Enola, superintendent of Division No. 5, from east of Rockville bridge to Dock street, Harrisburg, to Division No. 19, Pittsburgh division, between East Portage and west end of Altoona yards.

Enola Man Transferred C. W. Montgomery, of Enola, superintendent of Division No. 5, from east of Rockville bridge to Dock street, Harrisburg, to Division No. 19, Pittsburgh division, between East Portage and west end of Altoona yards.

Enola Man Transferred C. W. Montgomery, of Enola, superintendent of Division No. 5, from east of Rockville bridge to Dock street, Harrisburg, to Division No. 19, Pittsburgh division, between East Portage and west end of Altoona yards.

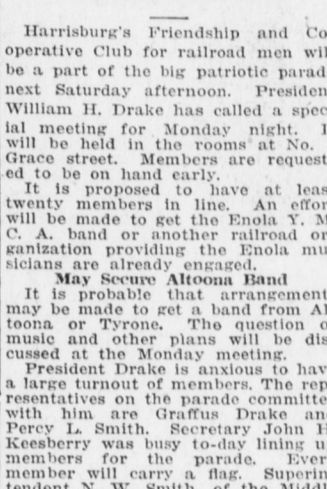
Enola Man Transferred C. W. Montgomery, of Enola, superintendent of Division No. 5, from east of Rockville bridge to Dock street, Harrisburg, to Division No. 19, Pittsburgh division, between East Portage and west end of Altoona yards.

Enola Man Transferred C. W. Montgomery, of Enola, superintendent of Division No. 5, from east of Rockville bridge to Dock street, Harrisburg, to Division No. 19, Pittsburgh division, between East Portage and west end of Altoona yards.

ALL THE NEWS OF THE RAILROADS

MANY CHANGES IN SUPERVISORS

C. Z. Moore, of Middletown, Goes to Middle Division; One Change at Enola



As a result of recent changes in division superintendents on the Pennsylvania Railroad lines, sweeping transfers were yesterday announced at Altoona in supervisors.

Reading Relief Payments The February report of the Philadelphia and Reading Relief Association shows receipts of \$29,723.26 and expenses, \$43,058.14.

Need Shifting Crews The Reading Railway Company is now handling over 300 cars of material and finished products from the mills at Coakville. It requires 20 shifting crews to look after this work.

Fair List Prices Fair Treatment

The 1917 Message to Ford Car Owners

GOODRICH 375 SIZE (3 1/4 INCHES) 375 BLACK SAFETY TREAD TIRES

HERE is the BIG NEWS of the YEAR for the owners of Ford Automobiles.

The B. F. Goodrich Rubber Company, having centered its 48 years' experience and knowledge directly on the problem of making the best tire for the Ford automobile, has brought forth a tire that fulfills the special needs of the Ford automobile, and doubles its virtues.

It is the tire for which Ford drivers have been waiting—a Ford car tire of HEROIC SIZE: GOODRICH "Three-Seventy-Five"