

YALE FIVE INTERCOLLEGIATE CHAMPIONS--CAMDEN HUMBLER INDEPENDENTS

FEW CHANGES IN FOOTBALL CODE

Carrying of Instructions by Substitutes Is Curbed by New Rule

Football Rules
Substitute player entering game must not speak to any player on the field until after ball is put in play. Penalty, fifteen yards.

PACIFIC COAST FOOTBALL PRACTICE KEPS ATHLETES BUSY



SPRING FOOTBALL PRACTICE
The University of California football team training at Berkeley, Cal. This is the only college that trains its men for football in the spring.

features of the new rules adopted by the football rules committee for the 1917 season. The committee at its annual session, which closed here on Saturday, instructed the secretary to prepare corrections and additions to the code to cover the following changes:

has been put into play, and if any change in the positions of the players is necessary the incoming substitute must give information through the referee. In case the substitute takes the place of the player giving signals, he may give the signals for the next play, but cannot speak to any players until after the ball is put into play.

MINISTER'S FAREWELL SERMON
Marysville, Pa., March 19.—The Rev. S. B. Bidlack, pastor of the local Methodist Episcopal and the West Fairview Methodist Episcopal Churches, delivered his last sermon as pastor of the joint charge, before leaving for the annual session of the Central Pennsylvania conference, at Lewisburg, this week.

YALE CAPTURES COLLEGIATE TITLE

Bulldogs Show Great Offensive Powers; Suffers Only One Defeat During Season

New Haven, Conn., March 19.—By the greatest show of offensive strength that any championship team ever displayed, Yale captured the Intercollegiate Basketball League title by trouncing Princeton decisively in the final game of the season.

ELEPHANTS AND POLLYS WIN IN MT. PLEASANT LEAGUE

Table with 3 columns: Team Name, Points, and Percentage. Teams include Mt. Pleasant League, Pirates, Pollys, Gardner, Elephants, Cubs, Bretz, and Red Sox.

STANDING OF THE TEAMS

Table with 3 columns: Team Name, W, L, Pct. Lists standings for Mt. Pleasant League and Evangelical League.

CAMDEN DEFEATS M'CORD'S TOSSERS

First Half of Contest Was Close With Locals One Point Behind When Period Ended

Starting a pace too fast for the Harrisburg Independents to follow, in the last ten minutes of play, on Saturday night, the Camden Eastern League five defeated the locals in the third game of a series, and thereby carried off the honors two to one.

The first thirty minutes of the contest was a nip and tuck affair and at half time the score stood at 23 to 22 in favor of the Skeeters. At the opening of the second half the locals forged to the lead on the field goals by Ford and Rote and a foul toss by McCord.

Table with 3 columns: Player Name, Position, and Points. Lists stats for Camden and Independents players.

INDEPENDENTS

Table with 3 columns: Player Name, Position, and Points. Lists stats for Independents players.

Governors of Five States in Favor of Adequate Preparedness

Philadelphia, Pa., March 19.—A link was driven in the chain of preparedness Saturday when the chief executives of five States on the Atlantic seaboard met in conference at the Union League and determined to proceed immediately to find out what aid each State is capable of furnishing to the National Government and then to furnish it.

The executives were Governor Brumbaugh, of this State; Governor Whitman, of New York; Governor Edge, of New Jersey; Governor Townsend, of Delaware; and Governor Harrington, of Maryland.

Central Co-eds Take Series From Lebanon

By winning on Saturday night the Central High School girls five took the series of three games from the Lebanon Valley College girls five, two to one.

The Central High School girls five has been challenged to a single game or a series of three contests for the state scholastic championship by the Hassett girls team. Both teams have defeated some of the strongest co-ed teams in the state and championship honors lie between the two local fives.

Table with 3 columns: Player Name, Position, and Points. Lists stats for Central and Lebanon Valley players.

FLORIDA "BY SEA" JACKSONVILLE

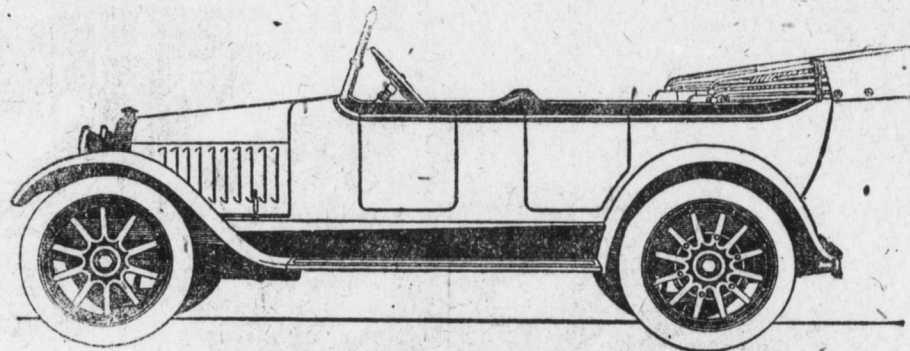
Baltimore to Jacksonville (Calling at Savannah) Delightful Sail Fine Steamers, Low Fares, Best Service Plan Your Trip to Include "Finest Coastwise Trips in the World" Illustrated Booklet on Request. MERCHANTS & MARRIERS TRAVEL CO. W. P. TURNER, G. P. A. Balto., Md.

THORLEY'S DRUG STORE IS NOW LOCATED AT 404 BROAD STREET

TYPEWRITERS Repaired --- Bought --- Sold ALL MAKES GEO. P. TILLOTSON 211 LOCUST STREET BELL, 3762. Opposite Orpheum Theater DIAL, 4802.

One of the many reasons why KING OSCAR 5c CIGARS Are so popular is because we have, for 26 years, been giving "more than your money's worth." JOHN C. HERMAN & CO. Makers

Make Your Dollars Count Come See the Chalmers



Chalmers 7-Passenger, \$1350

What is it that sets Chalmers cars apart from all others? Why is the Chalmers a better value than many other cars—some of much higher price?

Here are a few reasons. Only a few. Read them. Then come to us and let us prove to you that meaning of the word Quality—in a motor car.

Materials

The Chalmers, inch for inch, pound for pound, stands high above the other cars near it, in size or price.

Chalmers selects only the finest raw materials. For the frame—carbon steel. For the axle shafts and propeller shaft—chrome nickel. For the front axle—drop forged carbon steel. For the motor casting—close-grained gray iron. For the rear gears—nickel steel, heat treated to secure hardness and toughness. For the transmission housing—aluminum alloy.

So it goes throughout the car from end to end. Examine the Chalmers carefully. The deeper you go the deeper you are impressed with the quality of Chalmers materials.

Manufacture

Chalmers builds "from the ground up" in Chalmers own shops. Motors are Chalmers built, from rough castings to the final test. Built with skill, perfect facilities and untold care.

Motor

The motor is a light weight, high power six. Walls are tested for uniform thickness, to prevent the possibility of distortion and loss of compression. A specially designed intake manifold improves carburetion. Handles fuel economically. Insures easy starting in cold weather.

The crankshaft is designed to transmit maximum power of the motor without distortion or vibration. A one-piece crankshaft of drop forged carbon steel, heat treated. Noted for sturdiness. Strength. Rigidity. Balanced while rotating at high speed on a special machine. The balancing weights are a unit with the shaft.

Transmission and Axles

There is quality in the transmission. In the housing. In the gears. With Hyatt quiet bearings. Gears and shafts are made of nickel steel, case hardened. The transmission housing is cast from aluminum alloy.

The axles are amply strong to withstand all the stresses of hard service. The front axle is an I-beam drop forging of carbon steel. Spindles are extra large. With Timken roller bearings. A disc protector keeps out dust or grit.

Rear axle: light, strong, simple. The identical type used on some of the most costly American and European cars.

Frame and Body

An exceptional frame. Light and stiff. Sturdy and strong. Made of a pressed channel section. 5 inches deep. 2 1/2 inch flanges. 1/2 inch thickness. Braced by 3 cross members and reinforcing plates.

A sheet steel body. With frame of select ash. Genuine leather upholstery. Luxurious cushions. Soft and Deep. High seat backs. Wide seats. Four bow top. Covered with Pantasote. Curtains equipped with quick and easy fasteners.

Equipment

Equipment is costly and complete. Westinghouse electric starting and lighting. Willard 80 A. H. Battery. Stewart-Warner Speedometer and Vacuum feed fuel system. Gun metal finish instrument board. Nicked foot rest. These features indicate the high quality of equipment used on the Chalmers cars.

Appearance

Body lines are distinctive. Unique. The radiator is high and narrow. The hood is straight with an unbroken sweep. The windshield is the popular slanted type. Molded oval fenders harmonize with the body.

All of the above means Quality. The kind of quality you need in the car you buy, and the kind of quality you GET in the Chalmers

Table with 3 columns: Car Model, Price, and Passenger Capacity. Lists Touring Car, Roadster, and Limousine models.

Keystone Motor Car Co. 57 to 103 S. Cameron St. Harrisburg, Pa. C. H. Barner, Manager



CAPTAIN TAFT

Kinney, the plucky little forward, a brother of the late Gil Kinney, who was coaching the team at the time of his death, won the individual scoring honors of the season with a total of 139 points, overwhelming Ortnier, of Cornell, and Sisson, of Dartmouth, in the last four games of the series.

Near Old Record

From the floor Kinney scored 45 baskets, close to the record held by Harry Fisher, the old Columbia star. From the foul line he made only 44 points as against Sisson's 62, but every game in which Yale played was noticeably clean and fewer fouls were called on Yale than on any other team in the league.

Yale's wonderful offensive strength is best shown by the fact that it scored, all 141 field goals and 44 fouls for a total of 326 points in ten games. Defensively, Yale was not quite as strong as Princeton, yielding 220 points to its opponents, the total being made up from 91 field goals and 33 fouls.

Princeton was the best defensive combination, allowing only 201 points to opponents, and permitting only 57 field goals to be scored against it. On the offense, however, the Tigers were weak, scoring only 81 baskets, and ranking lower than Cornell, Dartmouth and Columbia in that respect. The Yale points scored were: Kinney, 139; Olson, 64; Garfield, 49; Walton, 46; Taft, (Capt.), 40.

The following table shows how the teams compared on offense and defense:

Table with 3 columns: Team Name, P.C., O.P., O. Op. Lists offensive and defensive stats for Yale, Princeton, Penn, D'm'th, Columbia, and Cornell.

Harrisburg Team to Open Baseball Season at Conway

Carlisle, Pa., March 19.—Conway Hall will have a strong team this year to face one of the stiffest baseball schedules secured for the preparatory institution in several years. A number of new men have appeared and indoor practice has been held daily.

April 14, Harrisburg Y. M. C. A. vs. Conway at Carlisle; 18, Mercersburg Academy vs. Conway at Carlisle; 20, Wyoming Seminary vs. Conway (Pending); 21, Shippensburg Normal vs. Conway at Carlisle; 22, Hill School vs. Conway at Pottstown; 27, Bloomfield Academy against Conway at Bloomfield; 28, Millersburg S. N. S. vs. Conway at Lancaster; 28, Harrisburg All-Collegiate against Conway at Carlisle.

J.S. BELSINGER 205 LOCUST ST. Optometrists Opp. Orpheum Theater Eyes Examined No Drops