

INTRODUCING
 SPRING FASHIONS
 — 1917 —

*Harrisburg's Official Display
 At the Center of Fashion*

Founded
 1871

Bowman's

Bell
 United

Spring's Chosen Apparel And
 Dress Accessories for Women,
 Misses and Children Await
 Your Approval!

*Guideposts on the Highway
 of Fashion Leading to
 the Best of the New Modes*



B



B

- NEW**
- TAILORED SUITS
 - DRESSES
 - COATS
 - GOWNS
 - BLOUSES
 - SILK LINGERIE
 - CORSETS
 - BRASSIERES
 - DRAPERIES
 - MILLINERY
 - ART GOODS
 - SILKS
 - DRESS GOODS
 - LACES
 - FOOTWEAR
 - TRIMMINGS
 - NECKWEAR
 - VEILING
 - GLOVES
 - HOSIERY
 - JEWELRY
 - RIBBONS, Etc.

An exposition of Spring Merchandise superior to any presentation we have previously made in scope and in brilliancy and smartness up to the high standard we have set for garments of quality.



*Bowman
 Styles Are
 Exclusive*

A large stock of Women's Suits, Coats or Dresses does not always mean the best for choosing. Not a few opportunities for selection here—but many. Rather than a lot of garments with many of a number alike—we show as great quantity but in a wide diversity of styles. This is a service to which we are devoting especial attention and we can state in all candor that we believe Bowman's is considered headquarters for styles that are truly "exclusive."

*Show Days, Thursday, Friday and Saturday,
 March 15, 16, 17, to which we cordially
 invite You to attend*

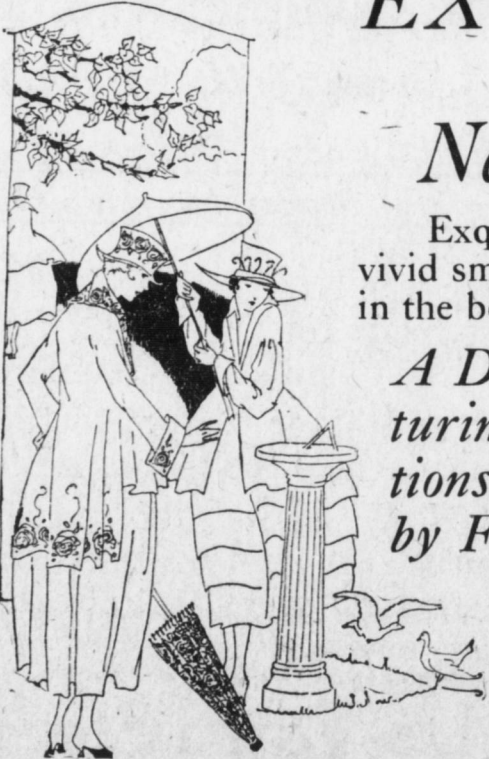
EXQUISITE---

The word which most adequately describes the

New Bowman Spring Millinery

Exquisite in the softness and delicacy of the materials---in the vivid smart colorings---in the simplicity of design and trimming---in the beauty of line.

*A Dazzling Array of Beautiful Hats Fea-
 turing in Hundreds of Remarkable Origina-
 tions---every Style Feature Brought Forward
 by Foreign and American Designers.*



B



B

