



Above is new salesroom and office of the Hudson Sales Agency at 1137 Mulberry street, having recently been opened for business at which point all new models of the Hudson Super-Six cars as well as the Saxon are shown. The Hudson Sales Agency is the local distributor for Hudson and Saxon cars in this vicinity. The show room is located on the first floor and while not large, it is very neat and very well equipped, and is considered one of the finest jobs of architectural work in Harrisburg, comparing most favorably with show rooms in larger communities, even those of New York and Philadelphia. The office and stockroom is on the second floor where a complete line of Hudson and Saxon parts are kept at all times.



Tell Us What a Car Must Do ---and Pathfinder Will Do It!

There's no going too heavy for Pathfinder Twin Six. She recognizes neither hills nor mountains—its High Gear all the way. Throttle her down to a snail's pace in the city's heavy traffic or dash her along at lightning-like speed without shifting a gear. Enjoy the luxurious comfort of easy riding—always—anywhere! There's poise to Pathfinder Twin Six, too. And individuality a-plenty. Let us prove by demonstration that Pathfinder Twin Six is the best bet on four wheels. See us at the auto show.

The Pathfinder Co.
Isaac Harbold, Distributor
1234 Howard St.
Bell 2837-M

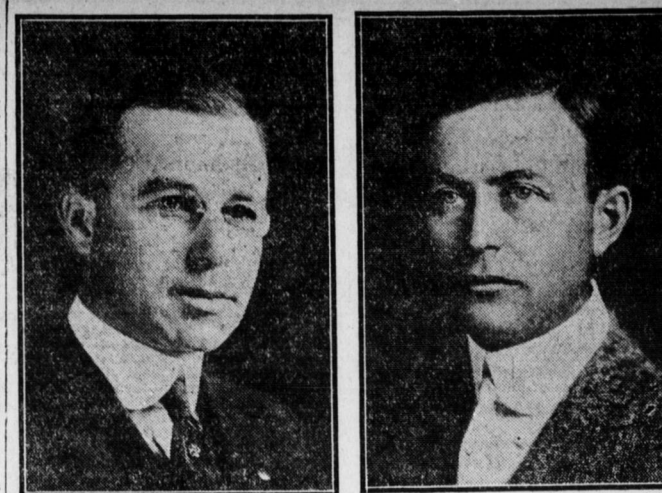
OVERLAND LIGHT FOUR MAKES HIT

New Model Possesses Good Style With Low Sweeping Body Lines

Although the Willys-Knight Eight, the Country Club and the Big Four and Light Six attracted their share of attention at the auto show, a great deal of interest was displayed in the Light Four just brought out by The Willys-Overland Company. In order to thoroughly introduce its merits, a stripped chassis was featured at the exhibit. The new Light Four at \$665 is a car of exceptional quality marketed at a price that does not do the car justice, as it places it in a price-notch below its proper classification. This car possesses good style, being built low with harmonious full, sweeping body lines. The doors fit flush with the body; door hinges and handles are all concealed, giving the car a clean, trim appearance that is stylish in the extreme. The windshield is the latest sloping style. It is also built-in and curves with the cowl. It is part of the car, and looks it. High crowned fenders are curved to blend gracefully into the lines of the body. The finish of the car is a deep, rich Brewster green, set off attractively by

gray wheels and black fenders and trimmings. In keeping with the Light Four's appearance is the performance of its motor. It is powerful enough to go anywhere that a six, eight or twelve-cylinder car will go, its makers assert, yet it is able to give unusually high mileage per gallon of gasoline. Vacuum system insures uniform gasoline flow under all road conditions. In addition to these good qualities the car possesses that most desired of all motor car advantages—easy riding. The soft cushions, the long and resilient cantilever springs, the four-inch tires, the 106-inch wheelbase and the proper balance of construction, absorb all jolts. Five passengers can ride comfortably in this car. All possible driving comforts and conveniences have been included. The starting and lighting are by electricity. The switches for the lights, ignition and horn are located just below the steering wheel. Clutch and service brake pedals work so easily and smoothly that a young girl can operate them. These can also be adjusted to the length best suited to the driver's reach. Gear shift and emergency brake levers are in the center, on the right hand of the driver, yet so placed that they do not interfere with passage in or out of the car. The instrument board is one more indication of the car's complete equipment. Speedometer, ammeter and oil indicator are high up on the dash, within the driver's direct line of vision. An electric light is so placed that it illuminates the entire instrument board at night. The lamp also serves as an indicator that the tail light is working properly, as the two are connected in series, so that if the tail light goes out, the dash lamp will give immediate warning. The side curtains fasten from the

inside—a big advantage in a sudden shower. The gasoline tank is in the rear of the car, where it can be filled without disturbing any of the passengers or submitting them to the annoyance of gasoline fumes. The Light Four is also made in a two-passenger roadster design at \$650. "How is it possible to manufacture such a car at such a price?" has been the question repeatedly hurled at John N. Willys, president of The Willys-Overland Company. "Concentration of our buying power and distribution of sales and factory costs over our entire line of cars," is his reply. "We have one executive organization, one factory management, one purchasing unit, one sales expense, and one group of dealers to plan, produce and sell our entire line. The tremendous economies of this method are obvious." "The low price of our Light Four model is characteristic of the great values we are offering the automobile buyers of all classes by our complete line for 1917."



PERUVIAN WRITER SHOT
Lima, Peru, Feb. 15. — Leonidas Yerovi, a well-known Peruvian writer and poet, was shot and killed last night as he was leaving the building of La Prensa. Manuel Jose Sanchez is charged by the police with the shooting. The crime has caused a sensation in the Peruvian capital. On the right is Troy B. Wildermuth and on the left Joseph Alexander, the two men who pushed to success the accessory business known as the Front-Market Motor Supply Company. This company is conducting an attractive exhibit at the automobile show this week and their reports of good business are only to be expected.

BRISCOE \$685
The Car With The Half Million Dollar Motor Fully Equipped

SEE THE NEW BRISCOE
40% GREATER POWER

Achievement SEE the new model B-4-24 Briscoe—a big, powerful looking car. It will make you say, "This Briscoe satisfies my ideals." Building it entirely in our own new factories allowed us to make the price \$685.

Value A LARGER motor, additional equipment; finer finish makes a car value, we feel, never equalled before. Ten big factories, and an experience dating from the beginning of the industry enables Mr. Briscoe to give so much for so little.

Attraction PLEASING design, fine upholstery, unusual leg room, easy-to-understand controls, accessibility of every working part makes this a car that fills your every desire.

Five Passenger Touring Car \$685
Four Passenger Roadster \$685 Coach \$810
Delivery Car (Canopy Top Body) \$700

E. T. MEHRING, Distributor
Bell, 595-J 1717 N. Fourth Street, Harrisburg, Pa.

Display of Used Cars

During the Auto Show we will exhibit at our Showroom Used Cars of Standard Makes, rebuilt or overhauled, some repainted, all in fine running condition. They will be sold at

Winter Prices

A small deposit will hold your car till Spring.

Music From 2 to 5

The Overland-Harrisburg Co.
212 North Second Street
Closed Evenings this week.

"Wolverine Eight"
Four-Passenger Cruiser

Jackson
"No hill too steep—No sand too deep"

Built on the Wolverine Eight chassis. That at once gives it distinction for smoothness of operation, and ease of riding. Drivers of this model go further and say this is the easiest riding four-passenger roadster ever built. There is much to win you about this unusually smart model. Body lines, seating arrangement, luggage space, equipment and finish are all unique. We are confident you would like to know the Wolverine Eight better. It is with pleasure that we extend the invitation to come and deepen your acquaintance.

Five-Passenger Touring Car, \$1295. Four-Passenger Cruiser, including five-wire wheels \$1395. Wood wheels \$160 less. Two-Passenger Roadster, \$1295. Five-Passenger Sedan (Demountable Top) including regular top, \$1505. All prices f. o. b. factory.

AT THE AUTO SHOW
P. H. KEBOCH, District Sales Mgr.
15 S. Third Street Harrisburg, Pa.
Bell, 572-W
Jackson Automobile Company, Jackson, Mich.

Myers' Accessory House

Wholesale and Retail Distributor

U.S. TIRES

Everything For the Automobile

GEORGE W. MYERS
Cameron and Mulberry Sts. Harrisburg, Pa.

Keep Advertising and Advertising Will Keep You