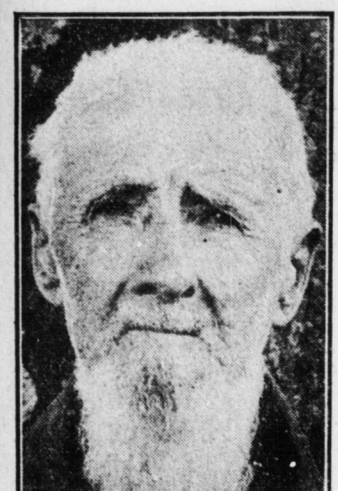


SAMUEL SHEPLEY DIES, AGED 92

Voted For More Republican Presidents Than Any Man in County



SAMUEL SHEPLEY Halifax, Pa., Jan. 22.—Samuel Shepley, one of the oldest farmers in Armstrong Valley, died late Saturday in the old Shepley homestead, two miles from Halifax, at the age of 92.

Funeral services will be held at the home of his son, Isaac Shepley, Thursday morning at 10 o'clock. The Rev. J. F. Stabler, pastor of Fishersville Lutheran Church, will officiate.

The venerable Mr. Shepley was the oldest living descendant of the Shepley family which settled along the Armstrong creek in the Indian days. A long line of Shepleys have gone out from the old homestead, but the son, Samuel, remained to till the farm on which he was born and raised.

Recent Deaths in Central Pennsylvania

New Holland.—Benjamin Franklin Owen, died from pneumonia after a short illness Saturday night, aged 86 years. He was a veteran of the Civil War, and prominently identified in many enterprises.

Marietta.—William W. Aument, of Safe Harbor, aged 70, died from apoplexy. He was a retired blacksmith and member of the Grand Army.

Sunbury.—W. H. Culp, aged 49 and for 21 years a member of the clergy, died at his home here yesterday. He is survived by a wife and two children.

BIRTHDAY SURPRISE PARTY Halifax, Pa., Jan. 22.—A birthday surprise party was held at the home of Mr. and Mrs. Charles Miller on Saturday evening, in honor of their son Edward's birthday.

HALIFAX FIREMEN ELECT Halifax, Pa., Jan. 22.—Halifax Fire Company No. 1 at a meeting on Saturday evening named the following as a house committee to make rules for the governing of the firemen's social room.

INSURANCE COMPANY OFFICERS Halifax, Pa., Jan. 22.—On Friday evening the board of directors of the Halifax Mutual Fire Insurance Company held their annual meeting at the office of the company for the purpose of finishing up business of the company for 1916.

BABY WEIGHS THREE POUNDS Wrightsville, Pa., Jan. 22.—The smallest baby born in York county in many years arrived Saturday night at the home of Mr. and Mrs. Henry Bailey, when a three-pound girl put forth her appearance.

MISSION FIELD SECRETARY ILL Shremantown, Pa., Jan. 22.—The Rev. Mrs. Callie King, who has been traveling in the Pennsylvania conference as held secretary of the home mission board, is suffering from a physical breakdown at the home of Mr. and Mrs. Bistline, here. Mrs. King is not dangerously ill.

Report of County Controller

Report of the County Controller of Dauphin County. Harrisburg, Pa., January 16, 1917. In accordance with the Act of Assembly creating the office of County Controller, I herewith submit my third annual report, showing the Receipts and Expenditures in detail and classified by month, and a full statement of the financial condition of the County for the year ending January 22, 1917.

Table with columns for various categories like 'Cash on hand and in banks', 'County tax levied for year 1916', 'County tax levied for year 1915', etc.

Table with columns for 'From which must be deducted the following items', 'Commissioners' warrants', 'Directors of the Poor, warrants', etc.

Table with columns for 'Balance due the County', 'Cash on hand and in banks', '1914 and 1915 county tax outstanding', etc.

Table with columns for '1912 COUNTY TAX', 'To amount outstanding January 3, 1916', 'By cash', etc.

Table with columns for '1914 COUNTY TAX', 'To amount outstanding January 3, 1916', 'By cash', etc.

Table with columns for '1915 COUNTY TAX', 'To amount assessed', 'To extra lists', 'To refunds account overpayments', etc.

Table with columns for '1916 COUNTY TAX', 'To amount assessed', 'To extra lists', 'To refunds account overpayments', etc.

Table with columns for '1914 PERSONAL PROPERTY TAX', 'To amount assessed', 'To extra lists', 'To refunds account overpayments', etc.

Table with columns for '1915 PERSONAL PROPERTY TAX', 'To amount assessed', 'To extra lists', 'To refunds account overpayments', etc.

Table with columns for '1916 PERSONAL PROPERTY TAX', 'To amount assessed', 'To extra lists', 'To refunds account overpayments', etc.

Table with columns for '1917 DOG TAX', 'To amount assessed', 'To extra lists', 'To refunds account overpayments', etc.

Table with columns for '1918 DOG TAX', 'To amount assessed', 'To extra lists', 'To refunds account overpayments', etc.

Table with columns for '1919 DOG TAX', 'To amount assessed', 'To extra lists', 'To refunds account overpayments', etc.

Table with columns for '1920 DOG TAX', 'To amount assessed', 'To extra lists', 'To refunds account overpayments', etc.

Table with columns for '1921 DOG TAX', 'To amount assessed', 'To extra lists', 'To refunds account overpayments', etc.

Table with columns for '1922 DOG TAX', 'To amount assessed', 'To extra lists', 'To refunds account overpayments', etc.

Table with columns for '1923 DOG TAX', 'To amount assessed', 'To extra lists', 'To refunds account overpayments', etc.

Table with columns for '1924 DOG TAX', 'To amount assessed', 'To extra lists', 'To refunds account overpayments', etc.

Table with columns for '1925 DOG TAX', 'To amount assessed', 'To extra lists', 'To refunds account overpayments', etc.

Table with columns for '1926 DOG TAX', 'To amount assessed', 'To extra lists', 'To refunds account overpayments', etc.

Table with columns for '1927 DOG TAX', 'To amount assessed', 'To extra lists', 'To refunds account overpayments', etc.

Table with columns for '1928 DOG TAX', 'To amount assessed', 'To extra lists', 'To refunds account overpayments', etc.

Table with columns for '1929 DOG TAX', 'To amount assessed', 'To extra lists', 'To refunds account overpayments', etc.

Table with columns for '1930 DOG TAX', 'To amount assessed', 'To extra lists', 'To refunds account overpayments', etc.

COURT HOUSE MAINTENANCE

Table with columns for '1. Salary Janitor's assistants', '2. Salary Janitor's assistants', '3. Salary Janitor's assistants', etc.

ELECTIONS

Table with columns for '1. City register', '2. Primary elections', '3. General election office', etc.

INTEREST AND SINKING FUNDS

Table with columns for '1. Interest on 1901 bonds', '2. Interest on 1902 bonds', '3. Interest on 1903 bonds', etc.

PENAL INSTITUTIONS

Table with columns for '1. Eastern penitentiary', '2. Reformatory', '3. Glenn Mills Schools', etc.

CARE OF INSANE

Table with columns for '1. State Hospital, Harrisburg', '2. State Hospital, Pottsville', '3. State Hospital, Lancaster', etc.

ELECTIVE COUNTY FEE FEES

Table with columns for '1. Sheriff', '2. Prothonotary', '3. Recorder', etc.

MISCELLANEOUS

Table with columns for '1. Publishing annual report', '2. Salary Inspector of weights and measures', '3. Expense Inspector of weights and measures', etc.

COUNTY COMMISSIONERS' EXPENDITURES

Table with columns for '1. Salary Controller', '2. Salary clerk', '3. Salary clerk', etc.

1903 SINKING FUND

Table with columns for 'Dauphin county 3 1/2% bonds issued 1903', 'Municipal bonds at 5%', 'Municipal bonds at 4%', etc.

HOSPITAL DEPARTMENT

Table with columns for '1. Salary of physician', '2. Salary of nurses', '3. Surgical accessories', '4. Drugs', etc.

FARM EXPENSES

Table with columns for '1. Salary of farmer', '2. Salary of dairyman', '3. Implements', '4. Horses and mules', etc.

STONE CRUISHER

Table with columns for '1. Salary of special officer', '2. Warrants', '3. Deduct for warrants not presented', etc.

NEW WORK AND GENERAL REPAIRS

Table with columns for '1. Salary of carpenter', '2. Blacksmithing and machine work', '3. Plumbing and steam fitting', etc.

SUMMARY

Table with columns for 'Office Expense', 'Relief', 'Alms House Salaries', 'Provisions', 'Supplies', etc.

WARRANTS DRAWN

Table with columns for 'To cash on hand, Jan. 3, 1916', 'To cash from county taxes', 'To cash from liquor licenses', etc.

CHARTER NOTICE

NOTICE is hereby given that the application will be made to the Court of Common Pleas of Dauphin County on Monday, February 12, 1917, at 10 o'clock A. M., under the provisions of the Corporation Act of 1874...

LEGAL NOTICES

PROPOSAL FOR BUILDING BRIDGE

PROPOSALS WILL BE RECEIVED

PROPOSALS WILL BE RECEIVED

PROPOSALS WILL BE RECEIVED

PROPOSALS WILL BE RECEIVED

PROPOSALS WILL BE RECEIVED

PROPOSALS WILL BE RECEIVED

PROPOSALS WILL BE RECEIVED

PROPOSALS WILL BE RECEIVED