

Bowman's

BELL—1901—UNITED

HARRISBURG, MONDAY, JANUARY 15, 1917.

FOUNDED 1871



A SALE OF WHITE



This is the logical time to buy

Embroideries

Neckwear

Corsets

Blouses

Muslin Underwear

Silk Underwear

Muslins

Laces

Bed Spreads

Men's Shirts

White Silks

Sheets and Pillow Cases

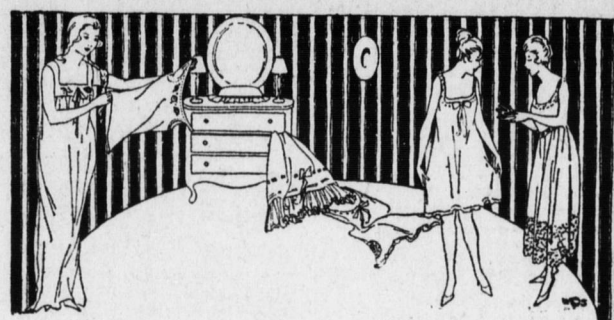
White Dress Goods

A Sale period of opportunity we call it—for surely it is an opportunity that enables you to buy at prices a long way below the present market.

We gave you the full story a few days ago—a story full of economies—whether your requirements be big or little.

Prices Still Have An Upward Tendency
And the experts tell us we are yet a long way from the top. Yet, what you pay here for standard merchandise during this sale — is not only much under the immediate market, but below the prices of several months ago.

Plan to be here this week—you really cannot afford to miss the values.



Muslin and Silk Underwear

Your Every Under-Garment Need Should Be Supplied During This Sale

The important features of this sale are that quantities and assortments are larger and prices lower than at any other time of the year.

You are afforded an exceptionally broad range of selection and makes possible very large economies for those who anticipate their wants now and lay in a supply for the future.

The Domestic Undermuslins

Corset Covers of fine nainsook, lace and embroidery trimmed, ribbon-drawn. Sale Prices, 25¢, 39¢ and 49¢.

Petticoats with deep flounces of lace and embroidery. Sale Prices, 50¢, 75¢, 98¢ and \$1.49.

Envelope Chemise, of fine nainsook, with lace and embroidery trimming. Sale Prices, 49¢, 69¢, 75¢ and 89¢.

Gowns—low neck, short sleeves or high neck and long sleeve styles; lace and embroidery trimmed. Sale Prices, 39¢, 49¢, 69¢, 75¢, 89¢ and \$1.29.

The Silk Garments

Silk Gowns, of crepe de chine, washable silk and satin. Sale Prices, \$2.98 and \$4.50.

Silk Envelope Chemise, of crepe de chine, washable silk and satin; with and without straps; lace and ribbon-drawn beading. Sale Prices, \$1.89 and \$2.49.

Silk Skirts, of crepe de chine, washable silk and satin, deep flounces of tucks. Sale Prices, \$2.98 and \$4.98.

Silk Camisoles, of crepe de chine, washable silk and satin, with and without straps. Sale Prices, 89¢, \$1.00 and \$1.50.

The Philippine Hand Embroidered Garments

Made of the finest materials, beautifully hand-embroidered. Envelope chemise and night dresses cut on the newest lines—handmade and hand-embroidered in the styles women admire.

Night Dresses, \$1.25 to \$4.00.

Envelope Chemise, \$1.25 to \$3.75.

BOWMAN'S—Third Floor.

Some Timely News of New Garments and Low Prices From the Women's & Misses' Outer Apparel Section

Winter Coats

Warm, serviceable and stylish coats are specially priced for clearance these days. New ones are being added from day to day to insure you of always finding an assortment in all the freshness that could be desired in the height of the season.

Coats of fancy mixtures, velours, wool plushes, vicuna cloth, imitation and genuine bolivia cloth, broadcloths, and poplins.

Many models are full lined, others half lined, while still others are lined only over the shoulders and in sleeves.

Trimmings of velvet, plush, or fur while some are finished with self material. Colors of gold, Burgundy, plum, navy, black and Santiago.

\$7.50 \$12.50 \$15.00 \$25.00

BOWMAN'S—Third Floor.

Too early for spring but not for these

Handsome Dresses

in delightful spring styles for wear now

It is so refreshing not to have to choose from the same stocks of winter dresses continually.

New dresses are arriving constantly now and as they are new they show some of the style features that will be used for spring wear.

New silk dresses of charmeuse, taffeta, Georgette crepe, pussy willow and combinations of one or more materials.

Dresses of domestic and imported serges with little touches here and there of heavy trimmings of beads — giving them a very distinctive effect.

Colors—plum, green, taupe, Burgundy, gold, navy, blue and black.

\$7.50 \$12.50 \$15.00

\$25.00 \$35.00



Under Prices On Evening Wraps

A Special Sale of Elegant Creations

Sharp reductions on all our handsome evening and theater wraps come now at just the wanted time.

These coats and wraps consist of chiffon velvet, imported novelties in silk, satins and broadcloths. Trimmings are of Australian opossum, marten, Kolinsky, seal and marabou.

Predominating shades are lavender, rose, pink, turquoise and black.

\$35 to \$49.50 to \$75.00 to \$185.00

BOWMAN'S—Third Floor.



Evening Dresses

An unusual collection of gowns for evening and dinner wear—every one a masterpiece calculated and planned to grace the most fashionable social function.

Every gown a handsome and striking expression of the designer's art.

Dresses in the beautiful and delicate shades of orchid, turquoise, Nile, Cherrite, pink, rose, lavender and black and white.

The styles are most bewitching as the showing reveals a deft catching up of a piece of net or ribbon. Little touches of bead and metal trimmings add to the brilliancy. A little bunch of flowers tucked here or there gives added beauty.

Favored materials are nets, charmeuse, satins, velvets and combinations of two or more materials.

Prices Now Are \$12.50 to \$25 to \$35.00 to \$55

BOWMAN'S—Third Floor.



Now For Big Fur Selling

We have entered our furs in a Clear-Away Sale

The furs included are

Scarfs Muffs Sets

for women and misses in Hundson seal, mole, skunk, mink, raccoon, pointed wol French coney, moline, nutria, black, gray, red cross and white fox.

Lowered prices right through the entire stock

Hudson Seal Coats

in plain flare models with collars of self material or fur trimmed in contrast. These are the prettiest coats of the season—high quality and you take ¼ to ½ off the regular figures and you get the new sale prices. BOWMAN'S—Third Floor

The Big January Silk Selling Event

The most wanted kinds of black and colored silks represented

Price—is not our only argument in this Sale of Silks—our strongest ones are that now we have the silks and now you can take time for selection—where later assortments may be less, prices will assuredly be more, and the usual first-of-the-season rush will have started.

The Silks featured for this sale are among the kinds that will be in greatest demand for spring and summer wear

Black Messaline, 36-inch width. Sale Price, 95¢.

Black Taffeta, 32-inch width. Sale Price, 87½¢.

Black Taffeta, 36-inch width. Sale Price, \$1.19.

Black Peau de Soie, 36-inch width. Sale Price, 95¢.

Black Majestic Satin, 36-inch width. Sale Price, \$1.19.

Black Taffeta, 36-inch width. Sale Price, \$1.29.

Black Taffeta, 36-inch width. Sale Price, \$1.53.

Black Messaline, 36-inch width. Sale Price, \$1.19.

Black Messaline, 36-inch width. Sale Price, \$1.29.

Also—very special offerings on colored silk taffetas, messalines, pongees, peau de soie, satins, in stripes, checks, overplaids, plaids and floral designs. Sale Prices, 89¢, 95¢, \$1.19, \$1.37½ and \$1.47½.

BOWMAN'S—Main Floor

The January Sale of Smart, New Blouses



Here is where there's a great choice—hundreds and hundreds of spic-and-span blouses of Voile, Georgette Crepe and Crepe de Chine in fashion's latest decrees—and at prices that mean to every purchaser decided economy.

Read on—come and procure your share of the bargains

White Imported French Voile Blouses, hand embroidered — also frills — others with Val lace, imitation Irish lace and tucks \$2.50

White Voile Blouses, in a wide variety of styles—imitation filet lace and embroidery, \$1.85

Tailored Striped Voile Blouses with roll collars — pearl buttons 45¢

Voile Blouses with embroidery, lace and tucks, 49¢

White Voile Blouses with trimmings of lace, fine tucks and embroidery 79¢

Fine French Voile Blouses with trimmings of very fine laces and frills, \$3.95 and \$4.95

White Crepe de Chine Blouses with embroidery and tucks \$2.98

White Georgette Crepe Blouses with embroidery and large collar of crepe de chine, \$3.98

BOWMAN'S—Third Floor.

The Sale of High Grade Corsets

\$1.25 for brand new models in a well-known make—all styles—coutil and broche—every size. They are worth double this sale price.

BOWMAN'S—Third Floor.

M'DEVITT WORKS OUT CAPITOL PLAN

Harry S. McDevitt, counsel of the State's Economy and Efficiency Commission has placed in the hands of Governor Brumbaugh a chart showing the boards, departments and commissions constituting the Government of Pennsylvania, includes every part of the governmental machinery in existence on January 1, 1917. It illustrates not only the cumbersome make-up, but the entangling alliances of many of the divisions. Putting many of the departments in juxtaposition shows the relative relationship of each. The location of the departments on the chart does not indicate their importance, their similarity or their size. They have been placed where their connections would show to the best advantage in an effort to eliminate as much crossing of the lines as possible.

While many of the boards and commissions appear to be of a temporary character they are shown for the reason that the Economy and Efficiency Commission is opposed to the long-accepted practice of creating such bodies to discharge duties that could be invested in existing departments, and the reverse of this chart would show the State Government after necessary consolidations, eliminations and absorptions. It is not the purpose of the chart to indicate the encroachment of departments, or the duplication of work, but a study of it will show that the duties belonging to many of the departments are identical.

The names do not indicate the relative importance of the divisions, for some labeled boards, bureaus and commissions are of much more importance than many departments. In restricting this chart to its present form the commission has ignored every subdivision of a larger body and has represented the entire group of bureaus and divisions by the title of the department. To have included even the important subdivisions would have required a chart of such proportions as would be too large for handling, or intelligent consideration.

land band will play for the Periwinkle band at the reception for the Governor's Troop at Harrisburg on Tuesday.

FRANKE—PLOUSE WEDDING
Hummelstown, Pa., Jan. 15. — William E. Franke, of Harrisburg, and Miss Alice N. Plouse, of Hummelstown were married on Thursday afternoon at the Lutheran parsonage, by the Rev. Herbert S. Garnea.

WILL PLAY AT RECEPTION
New Cumberland, Pa., Jan. 15. — Fifteen members of the New Cumberland

SHOWER FOR CLASS MEMBER
New Cumberland, Pa., Jan. 15. — On Friday evening the Sunday School class taught by Mrs. H. C. Oren of the Methodist Sunday School gave a miscellaneous shower to Mrs. Frank Romberger, one of the members of the class, at her home in Bridge street.