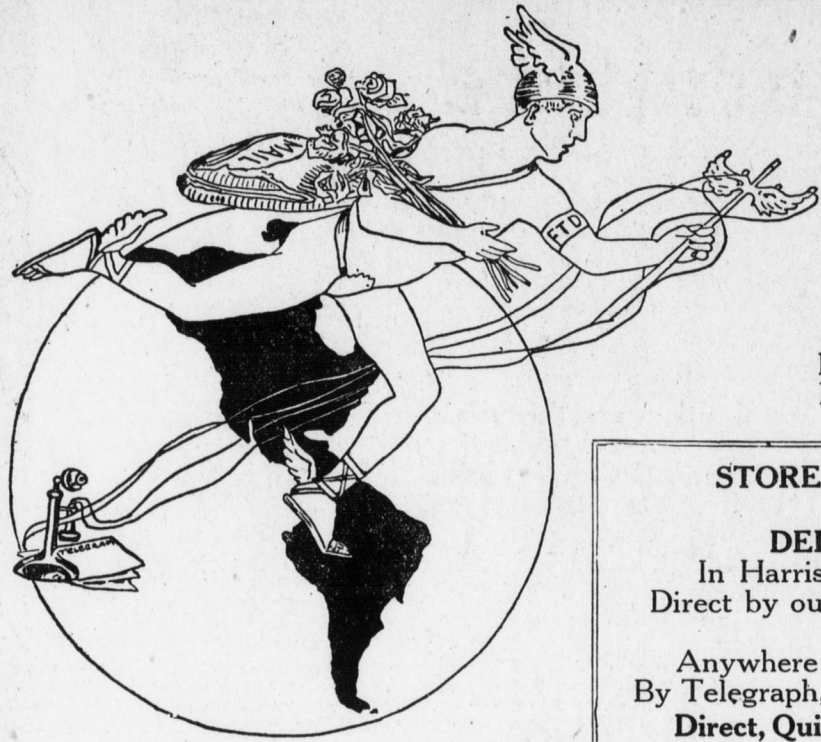


Flowers Delivered Anywhere By Telegraph for Christmas

THROUGH SCHMIDT--FLORIST



THE true purveyor of sentiment at all times is flowers. And what more truly a time of sentiment than Christmas? In even the earliest legends one finds the mention of the flora of nature associated with the Birth of the Christ Child. And so in celebrating this Birth in modern times, it is genuinely appropriate that flowers should play an important part.

Flowers delivered anywhere by telegraph is a modern institution. Through it you can avail yourself of a hitherto impossible condition — having fresh cut flowers delivered with your card to any city you desire to have them sent. *Flowers should, this year, play an important part in your Christmas list.*

STORE OPEN DEC. 24

DELIVERIES:—
In Harrisburg and Suburbs
Direct by our automobile delivery.

Anywhere in U. S. and Canada
By Telegraph, Mail or Long Distance
Direct, Quick Service — Always

Cemetery Wreaths

Lasting and really artistic wreaths made from prepared Oak, Cypress and Magnolias form one of the most desirable winter cemetery decorations. There are other possibilities, too, but the one mentioned is perhaps the most hardy, at the same time combining Christmas beauty with hardihood.
\$1.25 to \$5.00

Donatello Ferneries

Aside from cut flowers there is scarcely anything more appropriate than a piece of Donatello ptery artistically filled with the very newest varieties of ferns. In this store and greenhouse there is to be seen a most comprehensive display of these pieces.
\$1.25 to \$5.00

Cut Flowers

As a Christmas remembrance, what more appropriate than a box of fragrant cut flowers? The true purveyor of Christmas sentiment, flowers will convey in a beautiful greeting your Christmas message.
Roses — Carnations — Narcissus — Violets — Poinsettias — and all other seasonable cut flowers.

Potted Plants

Norfolk Island Pines — Combination Baskets — Miniature Poinsettias — Ferns — Dracenas — Azaleas (each year becoming more popular as a Christmas flower) — Cyclamen — Primulas — Palms and many other potted plants for interior decoration.

SCHMIDT, Florist, 313 Market Street

Expect to Keep 1917 Tax Rate to Present Basis of 9 1-2 Mills

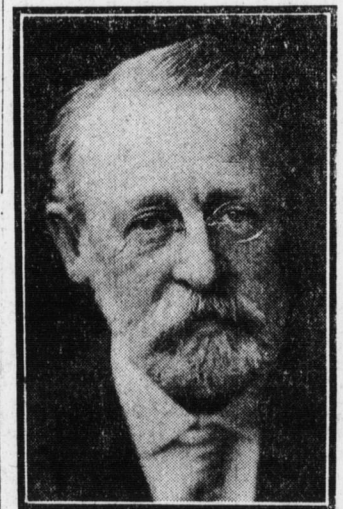
While city commissioner flatly refused to discuss the 1917 tax rate, one of the councilmen admitted to-day

that there is little possibility for an advance above the present rate of 9 1/2 mills. "We can get through on the present rate, I think," said he, "although we've got to do some tall paring." "Even if some of the funds of the water surplus earnings are used?" "Yes, I think so, even with the addition of the water funds, because

there are some big increases asked." "Will it be possible to retain the \$5,000 site for the bath house and bathing beaches?" "We haven't got to that item yet," he returned. "If there is money enough available I've no doubt we'll take care of it, though." Illness of City Commissioner H. P. Bowman will not delay the meetings

of the councilmen on the budget preparation as meetings will be necessary practically every evening until the first of the year. Raises in all the salaries of the water department employees, and \$25,000 for a municipal hospital are among the items included in Mr. Bowman's budget.

Dr. William W. Gilchrist, Famous Musician, Is Dead



Dr. WILLIAM W. GILCHRIST, Easton, Pa., Dec. 20. — Dr. William Wallace Gilchrist, a noted composer, chorister and organist of Philadelphia, died here to-day at a private sanatorium following an illness of two weeks. He was aged 60. Dr. Gilchrist was born in Jersey City. He had a remarkable musical career and was well known all over the country.

Dr. Gilchrist, who died to-day in Easton, was for 18 years the conductor of the Harrisburg Choral Society. Under his direction it became one of the most noted musical organizations in the State. For many seasons he came to this city every Monday evening for rehearsal and some of the most successful Spring music festivals of the Choral Society were held under his leadership, during the presidency of the late Rev. Dr. George S. Chambers. He retired in 1913 on account of ill health and the society presented him with a loving cup in appreciation of his long service.

Revocation of Woods Insurance Co. Receivers Asked in Federal Courts

Philadelphia, Dec. 20. — Action on behalf of the State to revoke an order for the appointment of a receiver for the Union Casualty Insurance Company of this city, granted by the Federal court here last Monday, was begun by Deputy Attorney General Joseph L. Kun in this city to-day with the presentation of a petition to Judge Thompson asking that books and papers of the company be turned over to the Dauphin county court at Harrisburg, and the request for a rule on Lyndon D. Wood, an officer of the company, Samuel W. Cooper, temporary receiver, and Homer G. Welsh, a stockholder, to show cause why this action should not be taken. Argument to make Cooper's receivership permanent will be heard by Judge Thompson January 2, at which time the question of the revocation of the court's order will be decided. Deputy Attorney General Davis, of Harrisburg, will begin similar action in the Pittsburgh federal court in asking the revocation of a federal receiver in the case of the Pension Mutual Life Insurance Company, of which Wood is president, in an effort to have the receivership directed by the Dauphin county court. Charges were made in the petition that Wood and Welsh stockholders in the company, defied an injunction of the Dauphin county court in asking for the receiver, and furthermore that the application was made in bad faith in an effort to prevent the Dauphin county court from dissolving the company, and to have friendly receivers appointed so that the methods of the two men should not be investigated and exposed.

Don't worry about his Christmas gift, give him a box of

KING OSCAR

5c Cigars

Their quality needs no introduction, no explanation. HE KNOWS

John C. Herman & Co.

At all dealers. Packed in boxes of 25 and 50. Makers

Harrisburg's Recognized Quality PIANO HOUSE

Where Should I Buy My Christmas Piano?

In this day of many claims and confusing prices this is a natural question. And yet—the very first thought of nine people out of ten is the

STIEFF PIANO HOUSE

WHY?

Not just because this is the Best-Known Piano House—but because over half a century of successful business has permanently established the indisputable reputation of our product — the absolute reliability of our prices — the satisfaction of the highest type of expert service, and because this is the best place to buy a piano.

- Bennett-Bretz Pianos as low as \$250
- Shaw Pianos as low as \$350
- Stieff Pianos as low as \$450
- Bennett-Bretz Player Pianos as low as \$450
- Shaw Player Pianos as low as \$750
- Stieff Player Pianos as low as \$900
- 15 Used Pianos at \$75.00 and up.

Chas. M. Stieff

24 N. SECOND STREET HARRISBURG, PA.



"When you travel, ride in a Pullman."

THE PULLMAN MOTOR CAR COMPANY takes pleasure in announcing the appointment of the PULLMAN SALES COMPANY of Harrisburg as its distributor for Dauphin and Perry counties.

The Pullman for 1917 needs no introduction to Harrisburg—it tops the "under-a-thousand-dollar" class at every point.

Its completeness of detail, superiority of finish and up-to-the-minute accessory features—of recognized standard makes—place this car at once beyond comparison at any price under a thousand.

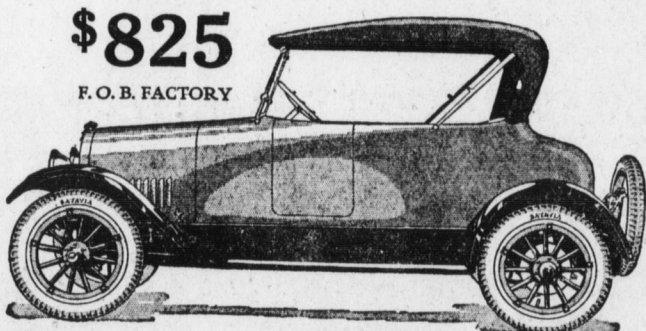
The 1917 line comprises the five-passenger touring, four-passenger roadster and two-passenger roadster, the price being the same for each model.

Pullman service is REAL SERVICE—hundreds of satisfied owners everywhere will testify to that.

Distinguishing features of the 1917 car—114-inch wheelbase, 32-h. p. motor, 50 1/2-inch full cantilever rear springs, Dixie Waterproof, high tension magneto, Batavia non-skid tires all four wheels, two unit electric starting and lighting, Stromberg type carburetor, double bulb headlights with dimmer, 17-gallon gas tank in rear.

\$825

F. O. B. FACTORY



FOUR PASSENGER ROADSTER

DEALERS WHO WANT TO START THE NEW YEAR RIGHT should get in touch to-day with the Pullman Sales Company of Harrisburg—there is still some open territory in Perry and Dauphin counties for the fastest-selling line of popular priced cars on the market.

Pullman Motor Car Company
York Penna.

PULLMAN SALES COMPANY

60 South Cameron Street

L. A. Wallace,
President and Manager.

Opening Day, Saturday, December 23

HARRISBURG, PA.



SAVE THAT \$ - SHOP UP TOWN

The perplexing problems of gift selection are most economically solved by visiting the up-town stores. Low expenses — Low prices — Courteous service.