

OFFERINGS ARE IN EXCESS OF DEMAND

Professional Pressure Imparts Heavy Tone; Central Leathers Drop Five

New York, Nov. 11.—Pressure, originating largely from professional sources and directed mainly against speculative stocks, imparted a heavy tone to today's brief trading. Offerings were largely in excess of demand, with resultant depression in the general list. Central Leather made an extreme loss of 5 1/2 points and Mexican Petroleum yielded three, with one to three points in numerous other industrial, equipment and so-called war shares. Standard falls and United States Steel also receded a point or more, and others were again subject to pronounced weakness. There were a few strong features, chiefly in the metal group, several of which, including Utah Copper, attained new high records. Variable and in some instances, substantial rallies occurred in the later dealings. The closing was irregular. Total sales were estimated at 500,000 shares. Bonds were lower.

NEW YORK STOCKS

Chandler Bros. & Co., members New York and Philadelphia Stock Exchanges, 3 North Market Square, Harrisburg; 1338 Chestnut street, Philadelphia; 34 Pine street, New York, furnish the following quotations:

Table of stock market quotations including items like Allis Chalmers, Amer Best Sugar, American Can, Am Car and Foundry Co, etc.

ZIONISTS HERE FOR BIG CONVENTION



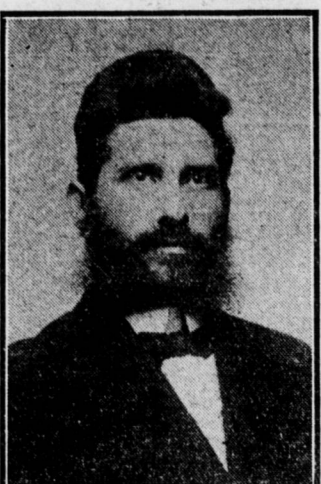
LOUIS LIPSKY



DR. THEODOR HERZL



JOSEPH BARONDESS



RABBI LOUIS SILVER

ZIONISTS TO MEET HERE TOMORROW

(Continued From First Page)

cal high school auditorium. A business session will also be held at 2 o'clock and a mass meeting in the evening at 7.30. This evening the members of the convention committee will meet the delegates and short talks will be given.

Frankel on Zionist propaganda; reports of convention committees and action thereon; organization; emergency fund; national fund; periodicals; election of officers; addresses by M. Scheinkin on Palestine conditions, and by others on the general situation; adjournment.

Sunday evening—Chairman, Robert Rosenberg, Speakers, M. Scheinkin, Louis Lipsky, Solomon Frankel, Joseph Barondess, Rabbi L. Levinthal and State Senator E. E. Beideman.

HARRISBURG REAL ESTATE BOARD

You Can Obtain Information Regarding These Properties From Any Member

FOR SALE 22 S. 19th Street Near Market M. A. FOUGHT 272 North Street Member Hbg. Real Estate Board.

FOR SALE No. 161 N. Fifteenth Street, 2 1/2-story frame, 7 rooms, water, paved street and side entrance. Price \$1500.

FOR SALE No. 1917 Briggs Street, 2 1/2-story frame, 7 rooms, water and gas, porch, side entrance, lot 110 ft. to 20-ft. street. Price \$1800.

FOR SALE No. 1513 Rudy Street, two-story brick, 6 rooms, bath, reception hall, steam heat, gas and electric light, porch and side entrance. Price only \$2400.

OFFICERS John E. Gipple, President. Howard M. Bird, Vice-President. Robert A. Carl, Secretary. E. Moeslein, Treasurer.

MEMBERS Charles Adler, 1002 North Third Street. M. H. Alteman, 145 North Front Street, Steelton. Backenstoss Brothers, 15 North Second Street.

100 Acres River Road Property Adjoining Harrisburg Academy and Including Hoffman's Woods

This 100-acre tract is the Nettie McKee Graham property and lies between the River Road and Jefferson street, and Division street and the town of Riverside, and includes Hoffman's Woods.

MILLER BROTHERS & CO. Locust and Court Sts. Member Harrisburg Real Estate Board

JUST north of Briggs street on Seventeenth and intercepting streets, there is a 'community' section wherein have been built homes of truly desirable type.

Although homes have been built in this section—and there are now several open for inspection—there are still many desirable building plots obtainable.

Within the year there will be many new homes of desirable type erected here—a tribute to the 'community' spirit of the section and a benefit to anyone who at this time secures a site for the future home.

George A. Shreiner Member Harrisburg Real Estate Board Seventeenth and Foster Streets

Major Kirk Who Made Penna. Avenue Famous With One-Man Parade



ONE-MAN PARADE Major John W. Kirk, of New Cumberland, is home on a short furlough. He voted on Tuesday and then started on a visit to friends in New Cumberland and Harrisburg.

SOCIAL

Other Personals on Page 2

Surprise Mrs. Fosnot on Her 72nd Birthday

Mrs. Margaret Fosnot, of Second and Keller streets, who celebrated her seventy-second birthday anniversary yesterday, arrived home last evening after a little outing to find her house aglow with lights and beautifully decorated with flowers and ferns.

GOVERNOR WILL SEE REEL FIRST

William Penn Highway Film to Be Sent to Towns Along Route

Governor Martin G. Brumbaugh, Highway Commissioner Frank B. Black, President William Jennings of the William Penn Highway Association and others will get a private view Monday or Tuesday morning of a 1,050 feet of 'illum' showing the dedication of the New York Extension of the William Penn Highway at Easton last week.

PHONE US FOR A New Supply of Clean Coal

From the Newest and Largest COAL POCKETS IN STATE



We are now prepared to supply you with fresh-mined coal from our new elevators just completed. Every facility necessary to guaranteed first-class clean coal is included in these modern coal pockets the largest building of its kind in the State.

J. E. DARE Both Phones 17th and Chestnut Sts.

RUBBER STAMPS SEALS & STENCILS

Protect yourself against worthless stocks, dishonest and irresponsible brokers and promoters by subscribing to the New York Curb

BUY COPPER

Particulars on Copper Stocks upon application. All coppers bought, sold and quoted.

HOWARD ARLEY & CO. 221 MARKET STREET, HARRISBURG, PA.

PHILADELPHIA PRODUCE

Philadelphia, Nov. 11.—Wheat—Market steady. No. 2, Southern red, \$1.87@1.90; No. 2, Southern red, \$1.85@1.88.

NEW YORK BANK STATEMENT

New York, Nov. 11.—The statement of the actual condition of banks and trust companies for the week shows that they held \$8,863,250 in excess of legal requirements. This is a decrease of \$25,238,790 from last week.

PHILADELPHIA STOCKS

Philadelphia, Nov. 11.—Stocks closed steady. General Asphalt, 20 1/2; General Asphalt, Pfd., 21 1/2; Lake Superior Corporation, 26 1/2.

CHICAGO CATTLE

Chicago, Ill., Nov. 11.—Cattle—Receipts, 700; steady. Native beef cattle, 10.10; stockers and feeders, \$4.50@8.00; cows and heifers, \$3.75@9.70; calves, \$8.50@12.00.

Deaths and Funerals

DIES FROM INJURIES Benjamin Shaffer died yesterday afternoon at the Harrisburg hospital, as a result of injuries received, while at work at the Zartman lumber mill at Dauphin. He is survived by his wife, two daughters, Mrs. Charles Reed and Mrs. John Shoop, also one son, Isaac, who was with the father at the time of the accident.

MRS. ADA HOLLENBAUGH

Funeral services for Mrs. Ada Hollenbaugh, 324 years old, who died at the Harrisburg hospital, will be held Monday afternoon at 12.30 o'clock at the home 2123 Moore street. The body will be taken to Newport where services will be held and burial made at 2 o'clock at the home of his daughter of New Bloomfield. Burial will be made in the New Bloomfield Cemetery.

KATHERINE JEANETTE RIMMEL

Katherine Jeanette Kimmell, 2-year-old daughter of Floyd Kimmell, died yesterday, at her home at 535 Camp street. Burial services will be held Monday afternoon at 2 o'clock. Burial will be made in the Camp Hill Cemetery.