

Dives, Pomeroy & Stewart

Seventy-Five Suits For Women Fresh From a High-Class Maker

On Sale To-morrow at Remarkable Savings

\$25.00 and \$27.50 Suits Go For - - - \$20 **\$30 and \$35 Suits Go For \$25** **\$37.50 and \$39.50 Suits Go For - - - \$30**



The maker from whom we purchased these garments decided a week ago to discontinue the making of suits until next Spring. He had seventy-five suits of fine quality in his factory on which he was willing to sacrifice every cent of profit. Consequently, the garments came to us at savings which we consider to be very exceptional.

Styles Developed of Fine Materials With Handsome Linings

The weaves include wool velours, broadcloth, Gabardine and poplin, and the sizes range from 34 to 42. The colors are navy, green, brown, Burgundy and black.

A Rare Opportunity For Women Who Will Pay \$20.00 to \$30.00

\$25.00 chiffon broadcloth suits, in a tailored model, finished with bands of self trimming and black velvet collar and cuffs; in navy, green, black and brown. Special, at **\$20.00**

coat is made with a full circular skirt, finished with a narrow belt extending from the side to the front; large shawl collar and bone button trimmings. Special, at **\$20.00**

\$30.00 suits, in navy and black poplin; the coat is a full flare pointed model, trimmed with broad silk Hercules braid; inlaid velvet collar. The skirt has a full gathered back and inverted pockets. Special, at **\$25.00**

Dives, Pomeroy & Stewart—Second Floor

It Will Pay You To Buy Mattresses Now To Cover Your Needs For the Winter and Spring

With cotton already at a high mark these values will speak for themselves.

- \$6.95 felt mattresses, \$7.95
- \$9.50 felt mattresses, \$8.50
- \$10.50 felt mattresses, \$9.50

Furniture For the Bedroom

3-piece bedroom suites, in golden oak and mahogany; including bed, bureau and chifffonier. Special for the two pieces **\$39.00**

Solid mahogany bed and solid mahogany chifffonier; an unusual value. Special for the two pieces **\$39.00**

Golden oak chifffonier. **\$12.50**

Golden oak bed. **\$15.95**

Three-piece bed's-eye maple bedroom suite, including bed, bureau Sheraton design, with 24x30-inch and chifffonier. **\$63.00** mirror. Special **\$14.95**

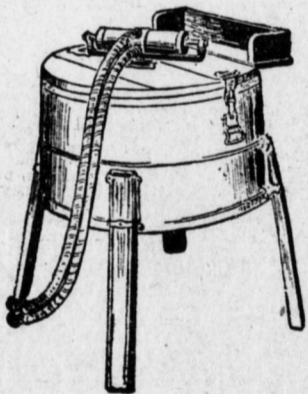
Dives, Pomeroy & Stewart—Third Floor.

Winner Water Motor Washing Machines, \$12.50

The usual construction of water power washing machines embodies the use of packing nuts, which in time cause friction.

But in the "Winner" machine packing nuts are done away with altogether, and consequently the motor runs smoothly into old age.

Less water pressure and less water are used by the "Winner" and for that reason you ought to try one in your home. A free trial if you wish it.



Dives, Pomeroy & Stewart, Basement.

The Superior Quality and Style of Trefousse Gloves

These are self-evident features that make these gloves so popular with women who follow fashion's dictates so carefully and correctly. No gloves offer more at these prices—

- Tres Bon two pearl clasp kid gloves with pique seams, black with white and white with black **\$2.25**
- La France two pearl clasp kid gloves, pique and overseam stitching, black with white **\$2.25**
- Sans Pareil two clasp kid gloves, pique and overseam stitching, black with white **\$2.00**
- Two-clasp kid gloves, in black, white and colors **\$1.75**

Dives, Pomeroy & Stewart—Street Floor

Demonstration of O' Cedar Mops



Those hard to get at places, in corners and under heavy furniture were taken into consideration in making O' Cedar Mops. Adjustable to any desired position. Oil polish mops are **75c** and **\$1.25**; O' Cedar polish is sold in these sizes, 4 ounces, **25c**; 12 ounces, **50c**; 32 ounces, **\$1.00**; 1/2 gal., **\$1.50**; 1 gal., **\$2.50**.

Dives, Pomeroy & Stewart, Basement.

Turbans and Veil Hats Special at \$1.95

Small velvet turbans have been very popular this season, and our stock was unusually large. Now that we have served so many customers with this type of millinery we have grouped the remainder of these turbans for a month-end clearance



Tuesday at **\$1.95**

What the former prices were doesn't matter — if you can use a chic little black velvet hat — some are of the tam crown class — you will not find a better value.

A small lot of veil hats — velvet and felt turbans with veils — also reduced to **\$1.95** for disposal Tuesday. Dives, Pomeroy & Stewart—Second Floor, Front

Sleepy Time Tales For Little Children

Illustrated With Colored Text, 16c

These little stories for children between the ages of three and eight years tells in an enlivening manner of the adventures of the four-footed creatures of the woods and fields. So amusing are the books that your little boy or girl is bound to ask you before bedtime to read something more about Jimmy Rabbit or Peter Mink.

And while your youngster is eagerly listening to the imaginary escapades that are found in the animal world, a foundation of genuine work is being laid. Your little boy or girl is bound to see many of his or her own shortcomings through those of the Cuffy Bear family or through the escapades of Fatty Coon or Billy Woodchuck.

Dives, Pomeroy & Stewart—Book Department

Pretty Dress Cottons That Have Won Much Favor

Whenever there is anything new of interest in cotton dress goods be sure that we show it first. Many new styles have come in this season introducing fancy plaids and attractive stripes in beautiful silk and cotton weaves.

- Poplin, half silk, 36 inches; blue, brown, green, rose, wistaria, grey, black and plum; yard **70c**
- Adelphi Stripes, fine woven cotton with silk stripes, helio, black, navy, Cadet and grey; yard **50c**
- Plaid Silks, in fancy plaids; yard **50c and 60c**
- Crope de Chine, 36 inches; new shades; yard **45c**
- Madras Cords, white ground with colored stripes; excellent shirting patterns; yard **45c**
- Silk Stripe Madras, white ground with silk and colored stripes; yard **39c**

Dives, Pomeroy & Stewart—Street Floor

Smart Combs and Bags For Every Need

Some are elaborate and some are simple in design; in every one a choice value is to be found.

- Rhinestone combs, pins and barrettes, **25c to \$4.00**
- Bluebird pins, with colored stones, **25c and 50c**
- Casque combs mounted with rhinestones and colored stones; in new shapes, **50c to \$4.00**

Beaded draw string bags of velvet and silk, **\$1.00 and \$1.50**
Chiffon velvet bags with Persian and plain color linings, **\$3.50 to \$6.50**

Dives, Pomeroy & Stewart, Street Floor.

REPUBLICANS ENROLL NEARLY MILLION VOTES

(Continued From First Page)

Idea that the total Republican enrollment would reach nearly a million. From a Republican standpoint the enrollment figures are particularly gratifying. In 1912 the total vote for Republican presidential electors was 273,360, which means that 689,083 more voters enrolled as Republicans this year than voted the Republican ticket four years ago. The Democratic presidential ticket in 1912 polled 246,437 votes in Pennsylvania and today's figures show that only 20,471 more persons have enrolled as Democrats than voted for Wilson and Marshall at the last presidential election.

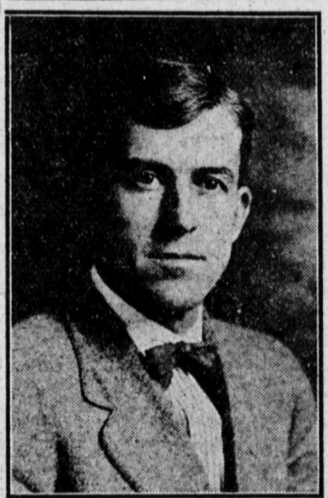
The fact that the total Washington party enrollment is but 20,744 indicates that the back-to-the-party movement started two years ago has fully materialized. The Washington party fell 93,867 below the 1914 figures and

424,150 below the total given Colonel Roosevelt in Pennsylvania 1912. An interesting feature of the table is that the nonenrolled voters number 201,257, or almost one-half the Democratic enrollment. The Prohibition enrollment is 17,558 and the Socialist 26,068. The accompanying table is official and complete, with the exception of two small counties, Cameron and Carbon. Accurate figures in these counties could not be obtained and in order to complete the table the 1914 enrollment in Cameron and Carbon are used. A study of the table shows that the total Republican enrollment is 481,962 greater than the combined enrollment of all other political parties and 280,705 greater than the total for the other parties added to those who did not give their party preference.

	Republican	Democratic	Prohibition	Washington	Socialist	Not Enrolled
Adams	2,993	3,727	59	187	50	1,938
Allegheny	141,254	24,000	784	827	4,659	15,711
Armstrong	10,394	4,190	22	12	176	809
Beaver	10,575	5,109	650	850	1,150	2,750
Bedford	4,691	3,383	118	593	327	412
Berks	12,989	22,022	85	320	1,228	6,539
Blair	15,283	2,334	206	297	718	1,685
Bradford	8,234	1,995	250	634	50	4,191
Bucks	8,472	6,015	43	587	82	5,692
Butler	9,171	4,482	1,117	1,117	2,546	2,546
Chester	15,232	9,541	730	231	740	2,159
*Cameron	559	4,034	1	1	4	382
*Carbon	2,453	4,304	8	815	50	4,229
Center	5,450	4,302	133	109	117	559
Chestnut	15,216	9,881	1	1	1	1,092
Clarion	9,005	3,821	1	1	1	1,092
Clearfield	9,000	6,287	662	194	1,084	1,591
Clinton	3,368	2,498	22	99	442	2,003
Columbia	2,515	6,798	151	293	1,461	1,461
Crawford	7,632	5,029	132	178	131	2,302
Cumberland	6,933	6,291	132	178	131	2,302
Dauphin	18,850	6,973	141	711	615	5,581
Delaware	20,193	3,236	62	544	52	6,214
Derry	2,470	2,192	136	357	87	1,568
Erie	11,018	6,118	639	178	818	6,191
Fayette	12,859	8,220	512	134	873	5,119
Forest	1,044	377	97	12	78	410
Franklin	8,152	4,766	35	225	90	4,135
Fulton	9,005	1,172	1	1	1	300
Greene	1,465	3,100	1	1	1	151
Huntingdon	5,200	3,300	1	1	1	151
Indiana	9,616	1,683	1,008	201	291	1,013
Jefferson	8,054	2,739	359	106	223	674
Juniata	1,778	1,423	1	1	1	584
Lackawanna	22,863	14,770	439	107	160	10,209
Lancaster	25,317	9,541	249	538	241	11,001
Lawrence	8,700	2,049	494	12	470	1,762
Lebanon	7,406	2,489	158	298	79	3,658
Lehigh	10,808	12,796	58	174	342	4,488
Luzerne	36,855	24,955	297	229	519	4,995
Lycoming	6,996	7,555	548	80	559	3,770
McKean	5,003	1,695	235	845	1	2,447
Mercer	10,221	4,416	900	155	1	2,447
Mifflin	3,616	2,142	23	88	269	1,990
Monroe	1,179	4,020	41	60	1	1,006
Montgomery	24,547	11,329	86	789	517	4,021
Montour	1,290	2,187	17	21	1	309
Northampton	8,426	9,973	173	157	124	4,718
Northumberland	11,478	10,162	102	359	584	4,915
Perry	3,571	2,279	23	47	29	394
Philadelphia	242,548	35,679	228	2,378	1,403	22,811
Pike	395	1,202	2	133	4	439
Potter	3,227	1,288	144	406	177	1,038
Schuylkill	25,551	16,500	34	152	274	3,478
Snyder	2,630	1,124	192	12	72	496
Somerset	10,270	2,484	309	25	44	502
Sullivan	988	999	77	40	12	530
Susquehanna	4,831	1,697	186	319	1	1,401
Tioga	7,800	1,200	200	800	1	500
Union	2,505	1,042	18	120	14	650
Venango	6,243	2,444	1,278	26	432	1,909
Warren	3,471	1,332	381	562	1	1,909
Washington	18,843	6,640	313	190	956	4,972
Wayne	3,238	2,415	140	538	10	1,296
Westmoreland	29,740	12,527	602	312	2,766	3,600
Wyoming	1,650	1,292	34	161	959	959
York	12,497	18,058	70	249	203	5,441
Total	962,443	416,111	17,558	20,744	26,068	201,257

*Enrollment of 1914.

This Is the Birthday Anniversary of—



M. H. BAKER

For a long time he has been identified with local business circles and is at present engaged in the plumbing business. He has been a resident of Harrisburg for 16 years coming from York county. For 10 years he has been in business.

Transfer of Naval Censors Not Due to Protest

Washington, Oct. 30. — Transfer of Lieutenants Charles R. Clark and H. S. Keep, naval censors at Sayville and Massachusetts wireless stations, respectively, to other posts was announced today by Admiral Benson, chief of operations. The Admiral denied published reports that his action was taken because Great Britain protested that the officers had permitted unauthorized information to go out concerning the recent raid of the German submarine U-53 on the New England coast.

"It is not true that these officers were transferred to other duty as a result of requests of any foreign government or persons," said Admiral Benson. "I took the initiative without consultation or direction from any other authority." The Admiral declined to say for what reason the officers were transferred. It was said that only questions of administrative details were involved.

FATTENING FOWLS IN PENS

Comparing the range and pen methods of fattening poultry, L. S. Kleinschmidt, of the poultry division of the Pennsylvania State College, favors pen feeding as the most practical and best suited to average farm conditions.

In range fattening, fowls are given a quantity of fattening food for a few weeks to increase their weight to some extent before killing. By this method birds are usually allowed to shift for themselves and pick up what they can find over the farm. Gains secured in this way are smaller and more expensive than those secured by any other method and results are least satisfactory. The flesh is hard, stringy and lacking both in quality and quantity.

Birds intended for pen fattening should be confined and fed from one to three weeks on a fattening ration. A box stall, an old shed, or a small pen with temporary coop, may be utilized for the purpose. Colony houses may be used to advantage. The birds may be kept in flocks of

ten to fifty, according to convenience. They may be fed in small V-shaped troughs or on boards. This method is recommended especially for fattening a small flock or in the case of some small, restless breeds. Leghorns, for instance, seem to do better in pens.

For a Quick Pick-up Luncheon try that most delicious, nourishing, whole wheat food, Triscuit, the shredded wheat wafer-toast. It contains all the body-building material in the whole wheat grain, including the bran-coat which promotes healthful and natural bowel movement. It is real whole wheat bread without yeast, baking powder or chemicals of any kind — an ideal food for children because it compels thorough mastication and insures perfect digestion. A crisp, tasty "snack" for picnics or excursions. Toast in the oven and serve with butter or soft cheese. Made at Niagara Falls, N. Y.

This Is the Birthday Anniversary of—



MERLE E. KELLER

He is principal of the Office Training School, located in the Kaufman building. He is a resident of Mechanicsburg but has been doing business in Harrisburg for some time.

LATE PASTURE FOR SHEEP

After the grain crops have been harvested the sheep flock may be allowed to graze the land. The sheep will clean up the fence rows, weeds and waste forage that was not collected in harvesting. The longer the sheep are kept on pasture or grazed on harvested fields, the better. They are thereby utilizing feeds that would otherwise be wasted. Grazing keeps the sheep in better physical condition also. In most sections of Pennsylvania sheep may be grazed without extra feed until December 1, if given shelter at night. Extension Circular No. 49 of the Pennsylvania State College school of agriculture and experiment station contains many valuable suggestions along this and other lines for the guidance of those interested in sheep raising.

Your Grand Father Used It 50 Years Ago

S. S. S. is one of the oldest and best known remedies in the world. It has been the standard for half a century. For three generations it has driven the poison from the blood and made men and women feel like "New." Your grandfather's good health to-day is no doubt due to the fact that he took S. S. S. years and years ago. S. S. S. contains no mineral ingredients. It is made of health giving herbs, roots and barks. It is guaranteed to be

Purely Vegetable S. S. S. For The Blood



This wonderful blood tonic does away with deep-seated blood impurities. When this is done, boils, eczema and skin eruptions are apt to disappear and the skin become healthy and clear. Rheumatism and Catarrh go likewise as do many other disorders that are caused by impure blood. If your blood is in bad condition get a bottle at once from your druggist. Don't let your druggist or anyone else persuade you to take a substitute.

Send For Booklet

Our medical department has prepared several interesting booklets which tell about your blood and its diseases and disorders. We have arranged to distribute these to the public and if you will send for a copy we will be glad to mail it to you with our compliments. Specify what particular trouble you want to know about. Our Medical Department is a high-class part of our established business which you may consult freely without charge.

The Swift Specific Co. 44 Swift Building Atlanta, Ga.