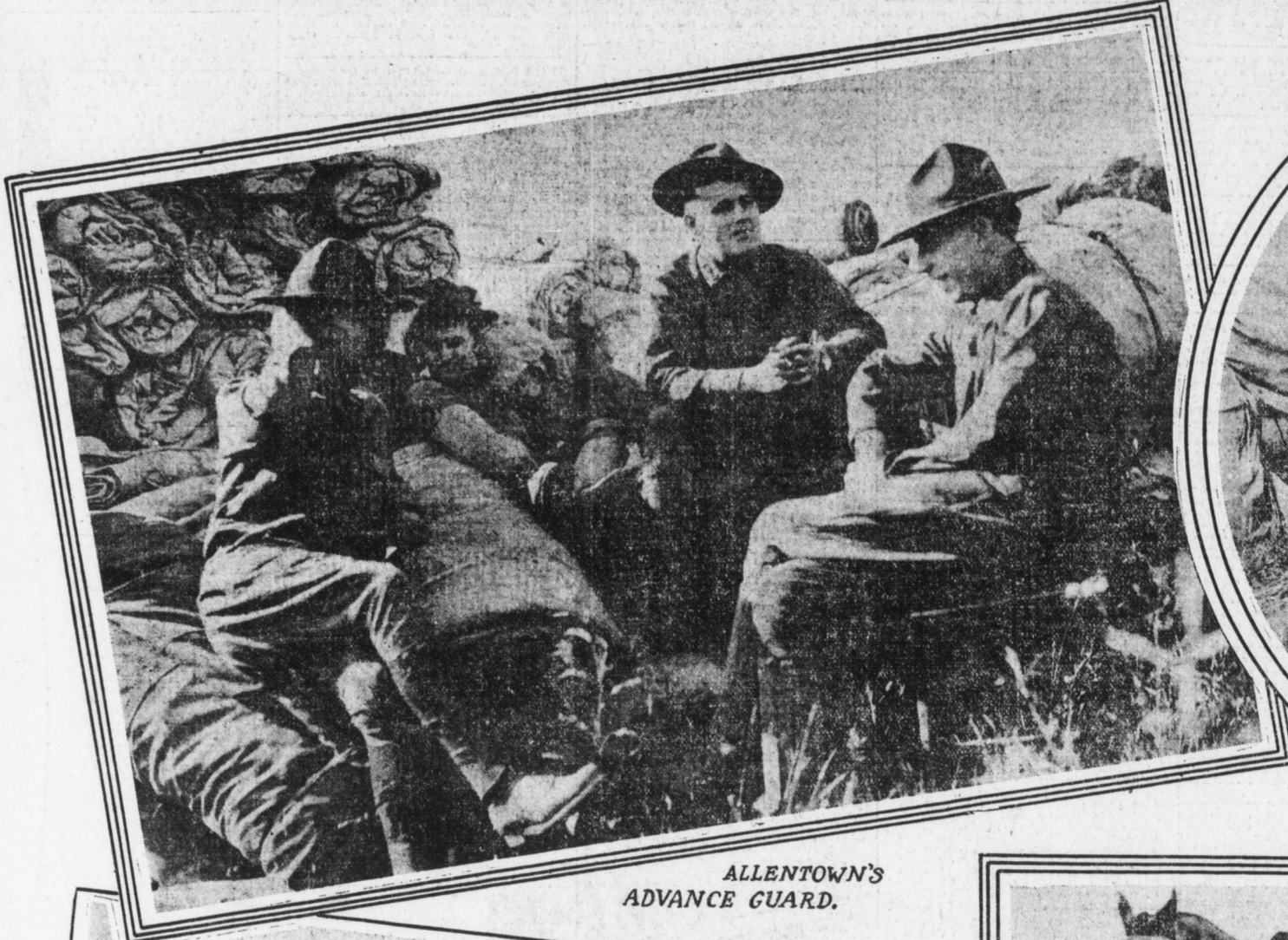


FIRST PICTURES OF CAMP BRUMBAUGH AT MT. GRETNA



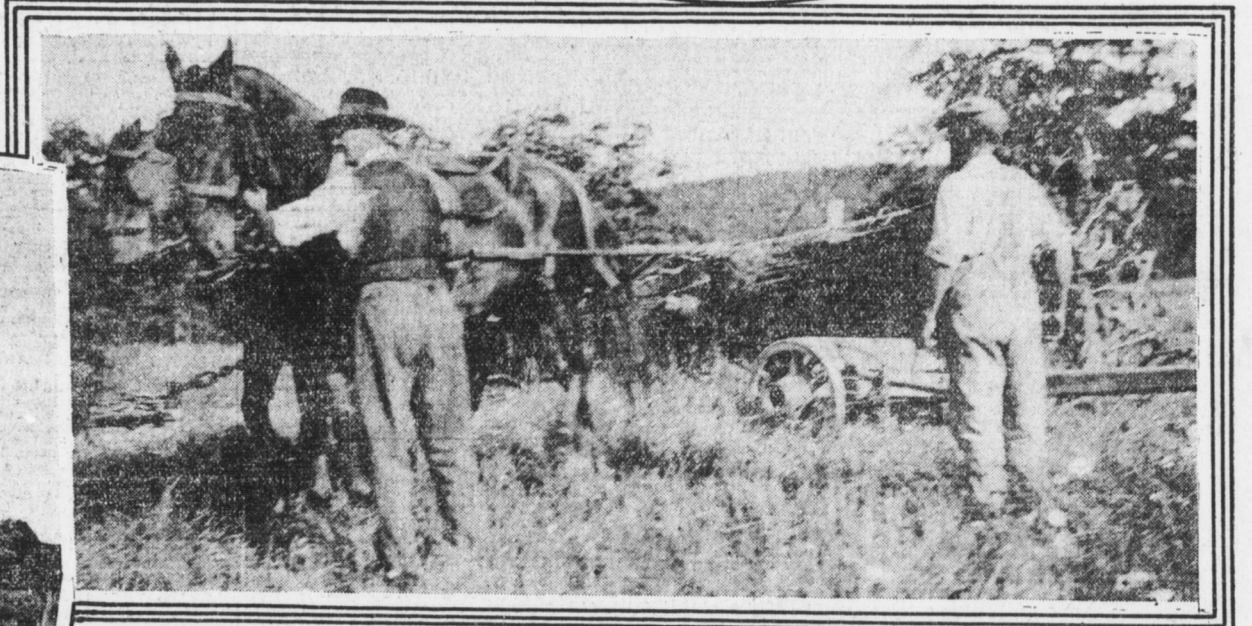
ALLENTOWN'S
ADVANCE GUARD.



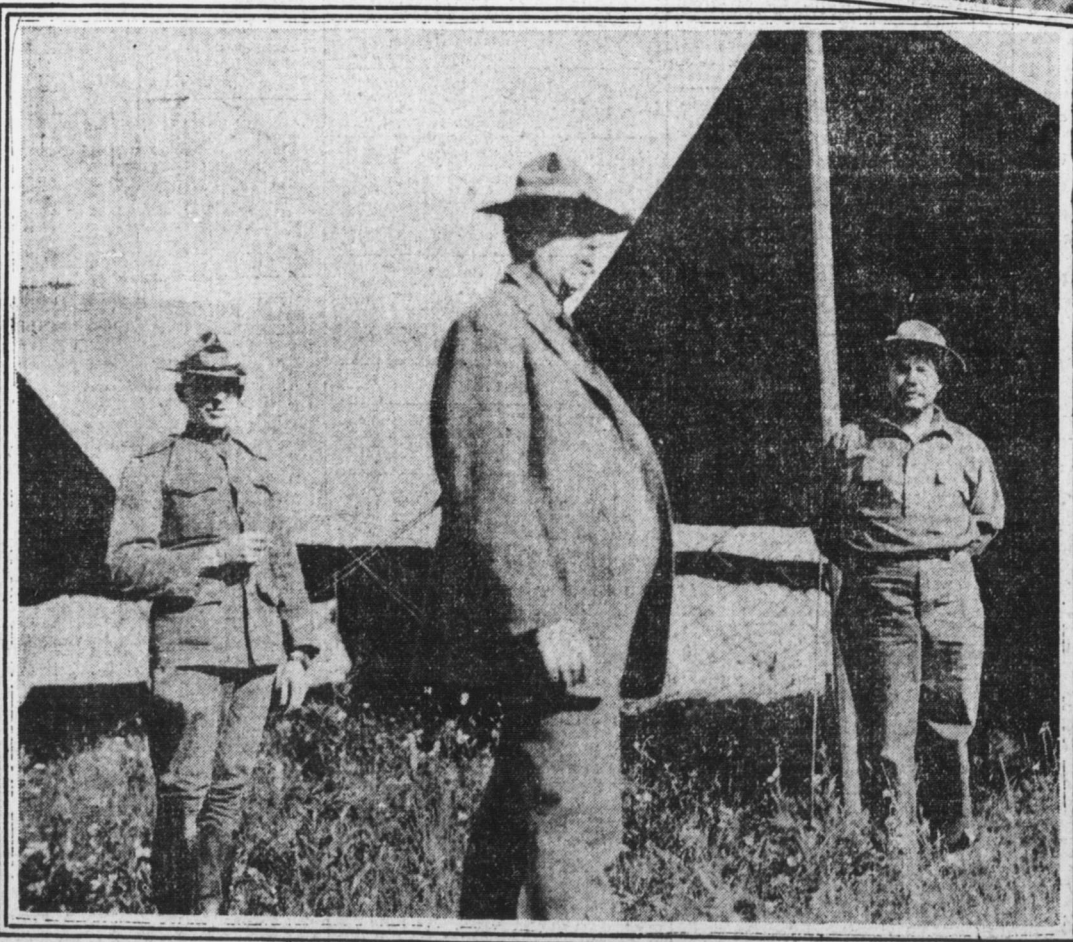
SETTING
UP
GOVERNORS
TENT.



UNLOADING
THE 8TH'S CANVAS.



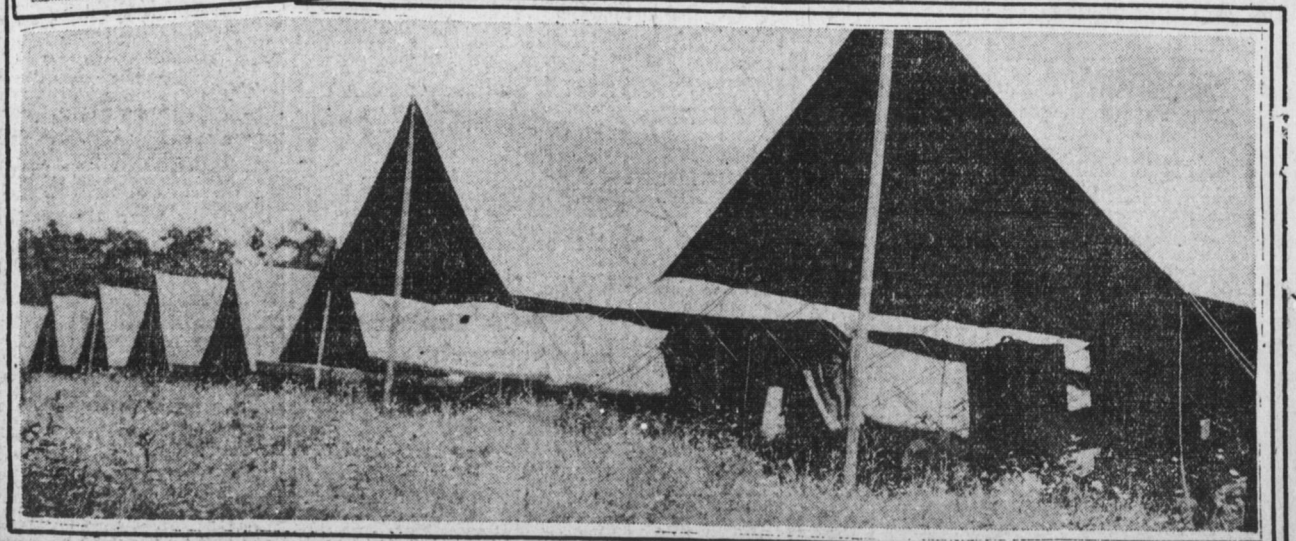
REMOVING TREE FROM CAMP SITE.



SOME OF THE STAFF OFFICERS
MAJ. WALTER C. STERLING, WILKSBARRE LIEUT. COL. F.M. VANDLING, SCRANTON SERG. CHAS. K. SIMMONS, OF STATE ARSENAL FORCE.



COL. RAUSCH DIRECTING WORK.



GENERAL HEADQUARTERS.