

# NEWS OF INTEREST TO AUTO OWNER AND PROSPECTIVE BUYER



**You Get the Benefit—**  
The design and materials of this Inter-State rear axle compares favorably with those of cars at twice and three times its price. You get the benefit of its better qualities in the smoother—safer—operation of the extra-value car.

### We Will Show You

Feature after feature of the Inter-State which gives you extra value over what you buy in other cars. And we back every feature with proofs from the testimony of thousands of owners. Before you invest—investigate.

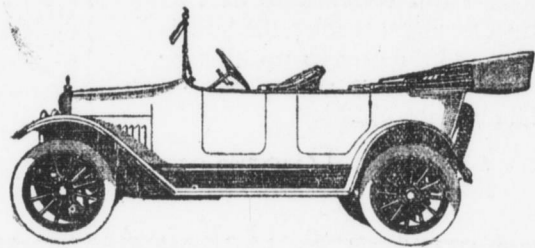
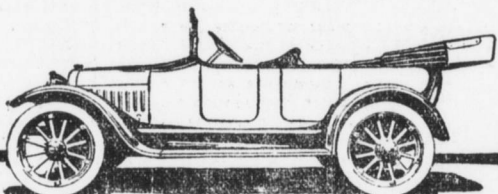
Touring Car or Roadster, \$350

### Auto Sales & Dist. Co.

DISTRIBUTORS

125 S. Cameron St.

Harrisburg, Pa.



## Value

**OWNERSHIP** of a motor car is not a means of an end—and that end is Service. All other considerations are of minor importance. Consequently, Service is the element that accurately determines Value.

When we assert that Maxwell Motor Cars represent an exceeding value, we base that statement on concrete and indisputable evidence of a service record that stands unparalleled.

Being a matter of vital consequence to you, we again refer to this fact: that a stock Maxwell car conclusively proved its worth by traveling 500 miles a day for forty-four consecutive days and nights without a motor stop—without motor repairs or readjustments—averaging 21.88 miles per gallon of gasoline.

The World's Motor Non-Stop Mileage Record, established in January, 1916, by a Maxwell Touring Car is authenticated by the American Automobile Association. It is not open to question.

Facts outweigh opinions. Knowing the facts your own judgment must suggest a motor car purchase that will be an investment for, rather than a mortgage against, the future.

- One chassis, five body styles
  - Two-Passenger Roadster . . . \$635
  - Five-Passenger Touring Car . . . 655
  - Touring Car (with All-Weather Top) 710
  - Two-Passenger Cabriolet . . . 865
  - Six-Passenger Town Car . . . 915
  - Five-Passenger Sedan . . . 965
- Full equipment, including Electric Starter and Lights. All prices F. O. B. Detroit

**Maxwell**  
Motor Company - Detroit, Mich.



MAXWELL MOTOR CARS

Are Sold in Harrisburg by our Distributor

### E. W. SHANK

107 Market Street

Bell Phone 366

### Maintenance Cost Low on Dodge Bros. Test

The report of the department of public works on the individual maintenance cost of 37 automobiles operated by the department shows the Dodge Brothers motorcar operated by John Dunn was the most economically driven car in the department. The statistics include every expense incurred by the cars from July 1, 1915, to December 1, 1915, gasoline, oil, repair cost, tire expense, etc., and show that Mr. Dunn's car was operated at the low cost of exactly two cents per mile.

The five Dodge Brothers cars used in the department also are given several records which place them at the top of the low maintenance records. Not one of the 37 used in the department was run for the six months at a lower cost per mile than any one of the five Dodge Brothers cars. They also showed the highest mileage, the lowest expense on tires and the greatest mileage per gallon of gasoline of any touring car in the department.

Three of the Dodge cars were operated for the six months without any expense on tires. On the other two cars of this make the tire expense was for the replacement of spare tires which were stolen from the machines.

The report shows many interesting comparisons of the maintenance cost of automobiles which range in cost from two cents a mile for the Dodge Brothers car to 27 cents a mile for one of the heavy duty trucks.

"Such figures are interesting to motor car owners and to prospective buyers of motorcars," said Thomas J. Doyle, local distributor for Dodge Brothers cars.

"In these days of the high cost of gasoline every one is looking for a car that can be operated economically but it is seldom you can find any owner who can tell you the exact cost per mile for the operation of his car. Such Dodge Brothers owners who have recorded the expenses for their cars have found them exceedingly low and that they were getting unusually high mileage on a gallon of gasoline."

### Bell Telephone Company Have Many I-H-C Trucks

For the benefit of their patrons, and to further improve their service, a large number of the late models International Harvester Company motor trucks are being installed to facilitate their large construction work now under way and to enable them to meet emergency calls due to storms, etc.

In other words, the Bell Telephone Company is meeting the demand for continuous service to their patrons, thus enabling them to constantly increase their subscribers by their preparedness to give satisfactory service.

The new model motor trucks now being installed by the above company are arranged with many compartments, each for some special supplies or instruments; in fact, every separate part in its place and a place for everything. This wise selection of the new, improved models International Harvester motor trucks enables them to reach any distant point quickly, regardless of the season of the year or the condition of the roads.

The International Harvester improved trucks have been largely used during the past several years by the Bell Telephone Company and many other public service companies and established a record for service and low upkeep expense.

### Paralytic Stroke Causes Death of Mrs. Eliza Swab

Elizabethville, Pa., May 13.—Mrs. Eliza Swab, widow of Allen Swab, died at her home yesterday afternoon from a paralytic stroke received Sunday while visiting Mrs. Elizabeth Romberger. She was a member of the Lutheran Church. She was 71 years old and is survived by one son, Mack L. Swab, former assistant treasurer of Northumberland county, and a daughter, Mrs. Isaac W. Matter, of West Fairview. Funeral services will be held on Monday afternoon at 2 o'clock, the Rev. E. J. Hellman officiating. Burial in Maple Grove Cemetery.

### RAILROAD NEWS

### CONDUCTORS ARE FOR GOVERNOR

Garrettsen Sends Word That He Has Been Endorsed in Grand Session

Governor Brumbaugh this morning received a telegram from A. B. Garrettsen, grand president of the Order of Railway Conductors, informing him that the order in a session at St. Louis yesterday unanimously adopted a resolution endorsing and commending him for having demonstrated as Governor that human personal right and interest should take precedence over property right and interest.

The resolution was presented by State Senator William J. Burke, of Pittsburgh, a candidate for Republican delegate on the Brumbaugh list, who is now general chairman of the Order of Railway Conductors on the Baltimore & Ohio Southwest systems. It recites efforts of the Governor as follows: "By his attitude on the attempt to repeal the full crew law in the State of Pennsylvania, Governor Brumbaugh made apparent his independence of corporate control, and placed under obligation to him every man engaged in train and engine service"; and, by his actions he demonstrated his belief that the human personal right and interest should take precedence over property right and interest, thus giving man precedence over the dollar.

The formal resolution then says: "That the Order of Railway Conductors in grand division assembled endorse and commend the attitude and action of Governor Brumbaugh, and declare their belief that he is worthy of the confidence of all men who labor."

### Railroad Notes

R. A. Youngkin, signal man for the Pennsylvania Railroad, who is employed at Lewistown Junction, has returned home after a visit to Harrisburg friends.

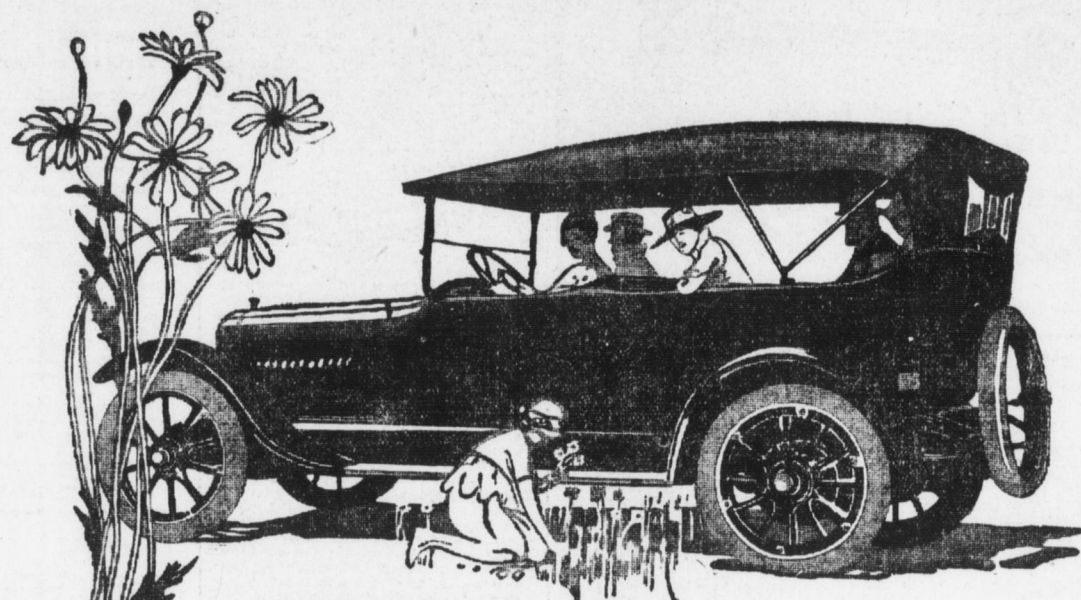
R. H. Fleming, traveling passenger agent for the Chicago, Milwaukee and St. Paul Railway, of Pittsburgh, was in the city yesterday.

George H. Levay, freight agent for the Philadelphia and Reading Railway at Steelton, has been drafted manager of the P. & R. Athletic Association baseball team, of the Allison Hill League. The first practice game will be held on May 15. The field is being put in shape and seats will be erected.

### HARRISBURG SIDE

Philadelphia Division—108 crew first to go after 4 p. m.; 118, 126, 106, 103, 115, 121, 110, 109, 123.  
Engineers for 108, 105.  
Fireman for 126.

Conductors for 108, 121, 124, 109.  
Flagmen for 105, 109.  
Brakemen for 105.  
Engineers up: Black, McGuire, Grass, Baer, Gray, Tennant, Gable, Newcomer, Hubler, Baldwin, Wolfe.  
Firemen up: Taylor, Bixler, Cable, Morris, Shimp, Messersmith, Deitrich, Swarr, Seiders, Herman, Peters, Walker, Johnston, Minnich, Smith, Shawfield.  
Conductor up: Bessing.  
Firemen up: Weirick, Miller.  
Brakemen up: Beale, Hoover, Arter, Fissell, Rudy, Mumma.  
Middle Division—27 crew first to go after 12:01 p. m.; 33, 30, 15, 17, 25, 232, 254.  
Laid off: 23, 29.  
Brakemen for 27, 33, 15.  
Engineers up: Doede, Steele, Kauffman, Baker, Albright, Harris.  
Firemen up: Hunter, Rumberger, Liebau, Horning, Trimble, Newcomer, Siff-in, Reeder, Steele, Braker, Sheffer, Kepper, Colyer.  
Conductors up: Corl, Coup, Glace, Hibish.  
Flagmen up: Miller, Finley, Fries.  
Brakemen up: Garlin, Sauerwine, Humphreys, Myers, George, Campbell, Hemminger, McNaught, Gebhard, Rhine, Howard, Fleck, Brown, Raisner, Summy, Himmelsicht, Smith.  
Yard Crews—  
Engineers for 6, first 8, 14, 20, third 24, 28, three extras.  
Firemen for 2, 6, 18, 20, 26. Three extras.  
Engineers up: Runkle, Wise, Watts, Sieber, Pelton, Shaver, Landis, Harter, Biever, Blosser, Malaby, Rodgers.  
Firemen up: McDermott, McCartney, Pensyl, Waltz, Brady, Snyder, Desch, Graham, Fry, Doppucherty, Eyde, McKillips, Ewing, Reeder, Reifer, Hitz.  
ENOLA SIDE  
Philadelphia Division—238 crew first to go after 3:45 p. m.; 254, 201, 251, 232, 204, 246, 205.  
Engineer for 254.  
Firemen for 232, 205.  
Conductor for 54.  
Brakemen for 5, 51, 54.  
Engineers up: Seabold, Snyder, McDermitt, Wilson, Cassner, Miller, Smith, Dougherty, Geist, Shande.  
Middle Division—112 crew first to go after 1 p. m.; 102, 244, 226.  
Engineer for 112, 105, 106.  
Fireman for 102.  
Yard Crews—To go after 4 p. m.:  
Engineers for first 108, first 126, second 126, first 124, 124, third 124.  
Firemen for first 108, second 126, 132.  
Engineers up: Kling, Smith, Branyon, Anthony, Nuemyer, Rider.  
Firemen up: Hinkle, Vest, Eichelberger, Sellers, Kline, C. H. Hall.  
THE READING  
Harrisburg Division—14 crew first to go after 11:15 o'clock; 6, 4, 17, 19, 16, 20.  
Eastbound—58 crew first to go after 11:15 o'clock; 55, 64, 61.  
Engineers for 64, 4.  
Firemen for 54, 42, 10, 12, 17.  
Conductors for 55, 64.  
Firemen for 55, 61, 14, 17.  
Brakemen for 14, 51.  
Engineers up: Crawford, Pietz, Wirtz, Massimore.  
Firemen up: Sullivan, Breighner, Nowark, Gelb, McMullen, Stoner, Miller, Glaser, Hoffman, Haldeman, Heister, Miller, Bowers.  
Conductors up: Orris, Snyder, Mentzer, Sipes, Danner.  
Brakemen up: Shultz, Smith, Davis, Zinsinger, Hershey, Dean, Harder, Guntber, Dittaman, Ross, Falk, Redman, Ream, Felker, Ames, Reed, Sier, Pietz.



**CHANDLER SIX**  
**\$1295**

### A REFINED MOTOR CAR

**THE** Chandler Six is built to serve discriminating families as a pleasure car. It will, if you ask it, go faster than ninety-nine out of any hundred car owners would ever want or dare to drive, but it is *not* a racing car. Its motor has power ample to take the car loaded anywhere that any automobile can go, but it is *not* a truck. It is a beautifully constructed motor car with the finest and most attractive of the season's bodies.

Most flexible and easily handled, full of life and go, richly upholstered in genuine leather, economical in operation and free from any hint of experimentation or untried theory, the Chandler is deservedly the most popular medium priced car in the whole American market this year.

- Seven-Passenger Touring Car . . . \$1295
- Four-Passenger Roadster . . . \$1295

F. O. B. Cleveland, Ohio

**ANDREW REDMOND,** Distributors For Central Pennsylvania

THIRD AND BOYD STS.

Good Live Dealers Wanted For Open Territories

HARRISBURG, PA.

CHANDLER MOTOR CAR COMPANY, CLEVELAND, OHIO

### Gasoline Drops 8c a Gallon

If your car is equipped with the

### Compensating Vapor Plug



Parcel Post Prepaid

### Proved Saving--Or Your Money Back

Lifetime Guarantee to Any Auto Owner

☐ "30 per cent. more speed. 40 per cent. more mileage. 30 per cent. more power." Less carbon.

☐ Can be attached in five minutes. No adjustments needed. No connections—simply tap hole and screw in.

☐ Makes starting easy. Made for all sizes of cars and carburetors. Instantaneous results. Never wears out.

### MYERS, "The Tire Man"

Cameron and Mulberry Streets, Harrisburg, Pa.