

APRIL BUILDING FIGURES TOPPLE OLD RECORDS; PERMITS TOTAL \$375,000

HOW WOULD YOU LIKE IT HERE?

Pretty Booklet Issued by Hainly Improvement Association Gives Points

AT OAK PARK COLONY

"Where Life Is Worth Living" Is Attractive Pamphlet of Information

If you're weary of the noise and confusion of the city, but want all its conveniences, with the additional advantages of pure air, fresh flowers and vegetables and the open life of the country, why not board a trolley car some day and visit Oak Park Colony and Hainly?

Take it from the dainty little booklet that has just been issued by the Hainly Improvement Association, there is "where life is worth living."

Shoop's Church, Hainly Nos. 1, 2 and 3, Oak Park Colony and the Colonial Country Club, all on the age-old road to Paxtonia, are some of the most interesting little suburban plots where one can build his country-city home.

"Oak Park Colony on Hainly No. 1 is a unique plan of suburban enterprise. It is a community settlement of five city families who together developed a section in one-acre plots, each building a beautiful home, facing a circular boulevard. The several acres inside the boulevard are owned in common and forever reserved as a playground.

"A central water plant was installed, which, with the walks, drives and grass reservations, are maintained in common. The grounds are beautifully landscaped, with spacious lawns, where the 'kiddies' have a chance and are growing up to be good citizens."

The Telegraph's ever-growing desire to boost things that help make life worth while is referred to by the publishers of the booklet, too. The booklet is bound, prettily illustrated and is available at a recent Telegraph editorial to this extent:

"God Almighty first planted a garden. And indeed it is the purest of human pleasures; it is the greatest refreshment to the spirits of man; without which buildings and palaces are but gross handicrafts; and a man shall ever see that, when acres grow to civility and elegance, men come to build stately, sooner than to garden finely; as if gardening were the greater perfection."

In Realty Realms
Eyes of the realty world were centered with the particular interest this week on the Derry court case.

FOR SALE
On account of engaging in other business, I will sell my complete crushing outfit, consisting of 2x16 Acme Crusher; portable bin, 25-ton capacity; 5 sections of screen; all in good condition. One 15 horsepower Frick Tractor Engine, A-1 condition. One 12-barrel capacity water tank. Ingersoll steam drill. Wood saw, 30-inch blade, new. Bars, sledges, hammers, picks and shovels. Good belting for above machinery.

Geo. A. Mowery
New Cumberland, Pa.
15th Street Bell Phone 3449-R

North Fifth St. Homes
Located at 2311-13-15-17 N. Fifth Street.
EASY TERMS
Fred C. Miller
Builder
213 Walnut Street, Harrisburg, Pa.
Bell phone, 797-M.

For Sale
No. 206 Walnut Street
Fronting 32 feet 9 inches, extending through the same width to Locust street.
Applications For Renting
First floor and basement may be considered. Floor area about 5,272 square feet, including show windows.
APPLY TO
Commonwealth Trust Co.
222 Market Street

Camp Hill
The Suburb of Natural Beauty; go out with us and inspect our new addition, "Cooper Heights," with its concrete walk, electric lights, water and gas with its fine buildings and bungalow sites. We will help you select a lot and build you a home. One hundred bungalow designs and plans to select from.

West Shore Realty Co.
Baer & Rice
Lemoyne Trust Co. Building
Lemoyne, Pa. Bell Phone 3193-J

ONE OF THE NEW TYPE HOMES IN BELLEVUE PARK



The development of Bellevue Park is one of the most notable examples of conservation of natural formation and beauty of land to be found in this section of the country. It is a community modeled over a standard of beauty in building and gardening such as have but few counterparts in real estate circles. And this because the Union Real Estate Investment Company, when they set about the developing, proceeded along lines they meant to follow. Bellevue Park is a suburb directly connected with the city, yet segregated enough to afford those features which make a suburb desirable. All of the homes are built with certain restrictions and conform well with the landscape gardening upon which so much stress has been laid. Fully one-third of the ground has been devoted to roadways, terraces, parks, ponds, and public reservations for the permanent enjoyment of Bellevue Park residents.

The community spirit is well worked out in Bellevue Park in that every resident becomes a member of the Bellevue Park Association which promotes the proper upkeep of trees, public reservations, grass plots and shrubbery. This is done through community meetings, committees, and community instruction classes.

is sustained on the paving question. The city, the court held, is liable for half of the assessment. The other problem was "Hardscrabble." Argument was heard on the question of exceptions early in the week. A decision is expected soon.

That the Spring activity in building circles is really under way is indicated by the activity in the departments of public safety and highways as well as in building inspection. During the present week bids for paving more streets in Bellevue park, Harrisburg's pretty suburb, were opened while water pipe bids will be opened May 8.

An up-to-date apartment and department store is planned for 52-54 Market street. It is said Charles Adler a day or two ago obtained an option on the property from Miss Fannie Eby.

M. J. Kast, a well-known architect of this city, was elected last evening to the vice-presidency of the southern Pennsylvania chapter of the American Institute of Architects. The meeting was held in the Lafayette Club, York.

RUTHERFORD ESTATE SELLS NEW EXTENSION FOR \$45,000
Formal transfer was made to-day of the eighty-two and a half-acre plot just east of Paxtang which E. M. Hershey recently purchased from Robert J. Rutherford and the Steelton Trust Company, trustees for the S. S. Rutherford estate. The tract which will be developed as the "East Harrisburg Extension," will be divided into some 400 lots. Bungalows will be the feature buildings. A general sale of the lots has been fixed for May 4-5-6. The tract which lies to the north of Derry street and immediately adjacent to the city limits, was purchased for \$45,000.

A HOME FOR YOUR COMFORT
All Conveniences LOOK at Fourth and Emerald "GET SATED"
RETTEW & BUSHNELL
1000 N. 3rd St.

BE SURE TO INSPECT Park Place
(East of Colonial Club)
Present activity makes important your immediate selection if you desire to share in choice lots.
Lots 25 feet frontage by 150 to 250 feet deep. Terms to suit purchaser—no interest or taxes for two years. Take Lingiestown Car. For further particulars, call 87-R, Bell phone.
H. M. BIRD
UNION TRUST BUILDING
M. R. ALLEMAN
has real estate in all parts of Steelton for sale and for rent. Look over our list.
145 North Front Street
STEELTON, PA.

Real Estate For Sale
The man who owns his home has gained the first step in his future independence. It is the first step of success. Scan this list of homes for sale. There are many good values to be found in this list.

- 138 13th St.—3-story brick house—3 rooms and bath, hot and cold water, front porch, side entrance, near State street, good condition; splendid location. Price \$3,500.
 - 914 Sixth St.—3-story brick house—10 rooms and bath, steam heat, side entrance, 10-ft. wide alley rear of lot. Possession at once. Price \$4,900.
 - 1913 N. Second St.—3-story brick house—10 rooms and bath, steam heat, side entrance, electric, gas, front porch. It is a good one. Price \$6,120.
 - 714 Capital St.—3-story brick house—nine rooms and bath, hot and cold water, furnace, bay window, good location; newly papered. Price \$4,600.
 - 1929 Green St.—3-story brick house—9 rooms and bath, steam heat, side entrance, front porch, good as a new house. Price \$4,500.
 - 15 South 19th St.—Cor. Zarker St.—3-story brick dwelling, 9 rooms and bath, all improvements. If you want one of this good kind, see me about this one. Price \$4,900.
 - 161 S. 18th St.—3-story brick house—9 rooms and bath; hot and cold water, furnace. Corner property, front porch. Price \$2,800.
 - 1931 Green St.—3-story brick dwelling house—9 rooms and bath, front porch, steam heat, side entrance, all improvements; you will not be disappointed if you buy this.
 - 412 North St.—3-story brick house, ten rooms and bath, all improvements, corner property; faces Capital Park; fine location. Price \$7,200.
 - 235 Maclay St.—3-story brick house—nine rooms and bath, out-kitchen, electricity, gas, cemented cellar with laundry and hot and cold water, front porch, balcony, side and front bay windows, gas range, size lot 21x98, corner property. Price \$4,800.
 - 224 Maclay St.—3-story brick dwelling, four rooms first floor; three rooms and bath second floor; four rooms third floor, steam heat, all improvements; lot 26x90, house 13 feet front, 16 feet between adjoining property. See me about price.
 - 207 Harris St.—3-story brick house—9 rooms and bath, hot and cold water, furnace, gas, side porch, corner property, in good repair; splendidly located. See me about price.
 - 115 Verbeke St.—3-story brick house—8 rooms and bath, hot and cold water, furnace, gas, centrally located, well constructed. See me about price.
- M. A. FOUGHT**
272 North Street

APRIL FIGURES TOPPLE ALL RECORDS

[Continued From First Page.]

a record-breaker was indicated early in the month, however, when Dr. C. C. Conklin started the ball rolling with an application for a permit for \$20,000 for a modern two-story garage in Cameron street south of Market. Then there were rows and rows of new dwellings started. William F. Bushnell gave the records a boost by taking out a permit for fourteen two-story bricks at Penn and Seneca streets at a cost of \$15,000; William A. McIlhenny got permission to build eight two-and-a-half story dwellings at

Eighteenth and North at a cost of \$24,000 and a little later he got permission to build half a dozen more modern little homes in Regina street near Seventeenth at an outlay of \$18,000. Heinley and Thompson added their little mite of \$24,000 to the grand total by erecting twelve three-story brick houses in Reel street. City Commissioner W. L. Gorgas, Harry A. Sher, David H. Hetrick and Son, and Samuel S. Etter added \$9,200, \$5,000, \$12,000 and \$8,200, respectively, by taking out permits for the erection of new homes.

Churches Boost Record
Two permits alone boosted the record a round \$110,000. One totalling \$70,000 was issued to the Messiah Lutheran Church congregation for the extension of that church at Forster

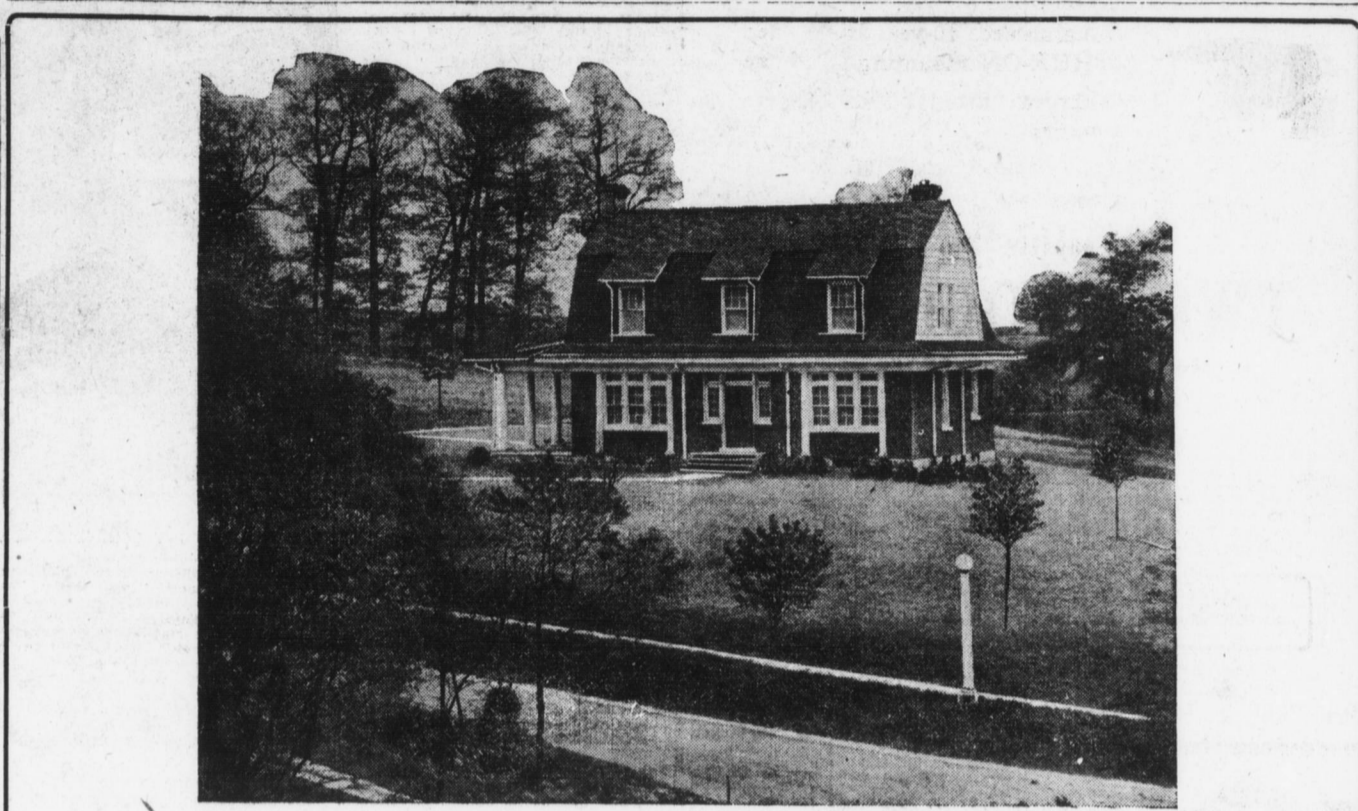
and Sixth street, while the \$40,000 boost was given by St. Lawrence German Catholic parish which will build its new church, parish houses, etc., in State street at the corner of But- tonwood.

Careful search of the monthly building records since 1909—all that are tabulated completely in the office of the department of building inspection—shows that no other month of any year with the exception of May of last year, approached the present month. Last May the outlay for buildings totaled \$328,025. Only one other month in these nearly eight years have topped April of 1916. This was July 1914, when \$409,055 was expended.

1915, \$95,375; 1914, \$292,175; 1913, \$185,025; 1912, \$58,240; 1911, \$124,550; 1910, \$130,985; 1909, \$474,025.

IMPROVEMENTS AT CRYSTAL RESTAURANT UNDER WAY

Extensive improvements are now under way for the extension of the Crystal Hotel, 418 Market street, which was recently destroyed by fire. The upper floors of buildings 414 and 416 Market street have already been leased for a long term by Athens George and K. Hamawi. The improvements will probably not be completed before the latter part of June. Approximately seventy-five additional rooms will be added, making a total of about 125 rooms.



New House—S. W. Cor. Briarcliff and Northfield Roads—Lot one-third acre—Price, \$8200.

HIS REASONS FOR LIKING BELLEVUE PARK

Mr. J. Horace McFarland, whose splendid garden home at Bellevue has gained a national reputation for the quality and variety of its fruits, flowers, trees and shrubbery, also beauty and attractiveness when asked, "Why do you like Bellevue Park?" said: "For many reasons, one of which is that it gives me not only high, pure air to breathe, but a prospect of distant hill and river so lovely as to have led the cultured German who named it Bellevue in 1819, to say that 'even on the Rhine I know of no region equal in dimension with the vicinity of Harrisburg which surpassed the picture displayed here by nature in its variety of scenic effects and its pleasant charms.'"

"Bellevue Park gives opportunity to have a garden, also; and in the garden I find it possible to obtain not only flowers and fruit and vegetables better than can be bought, but health, recreation and relaxation from the strain of business life."

MILLER BROTHERS & CO. Map and Prices at Park Office
Take Reservoir Park Cars to Twenty-first and Market Streets.

We Invite You to Inspect
Harrisburg's Nearest and Most Talked About Suburb

East Harrisburg Addition

Located Against the City Limits on 29th Street Fronting on Derry Street and Bounded by the Harrisburg Park Drive Way in the East

Look the Ground Over and Secure a Good Location Before the

Opening Sale Thursday, May 4th

Take a Paxtang or Hummelstown Car—5c Carfare—Get off at 32nd and Derry Streets—Courteous Salesmen on the Ground to Show You Around.

Not Less than forty feet sold to one Purchaser—On Corner not Less than sixty feet.

Terms to Suit Purchasers

Our automobiles at your service without obligation
LET US SHOW YOU AROUND
For prices, information and appointments Call 3683-J Bell Phone

Wm. J. Sohland Manager
E. M. Hershey Owner
Office: Room 7, Shearer Building, 204 Market St.