

EASTER SHOES

Easter is dress-up day of spring, and to be fittingly "dressed up" you must have pretty footwear. Let us show you what is both pretty and serviceable.

BOOK'S REAL SHOE MAKERS

217 - MARKET STREET - 217

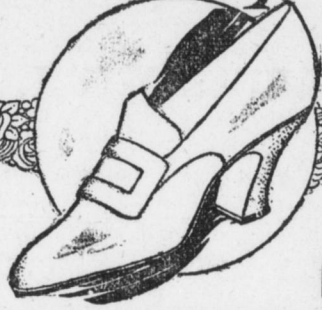
EASTER FOOTWEAR

NOW 20 STORES

Last Saturday we opened our 20th big store in Monongahela, Pa. Every new store adds to our wonderful buying power, and buying power means low prices.



SEE OUR WINDOW DISPLAY



OPEN SAT. EVE.



Women's High Boots

This Handsome Spring Boot Special at

\$5.00

Beautiful Spring Models—smart new shapes—attractive leathers so much in demand can be had here at this popular price. Smart Fifth Ave. lasts in all sizes.



EXTRA SPECIAL

500 pairs of women's odds and ends shoes. Patent and dull vamps in button or lace. Values up to \$3 at

\$1.00

WOMEN'S SHOES

High cut lace models in patent and dull and many other styles in button and lace. All sizes, \$3.50 values.

\$2.45

Women's Pumps & Shoes

Sold Most Everywhere at \$5 & \$5.50 Special at

\$3.95

Beautiful New Metropolitan styles—A charming assortment of chic new low shoe styles—the latest Metropolitan styles in shoes, oxfords, pumps and sandals. All sizes, fancy plain or colored leathers.



Women's White Nu-Buck Shoes

9-inch high-top lace models, leather heels! Beautiful styles. \$5 values.

\$3.45

Women's White Canvas Shoes

Button or lace styles. Dainty new spring models. All sizes. \$3 values.

\$1.95



MEN'S SHOES & OXFORDS \$2.95

Positively \$4 Styles and Qualities

Sporty and conservative styles in tan calf, patent colt, vicl kid and gun-metal. Narrow, medium or English toe shapes. Leather or rubber soles. All sizes.



Men's Tan Canvas Shoes

Lace styles. Good leather soles. All sizes. \$1.50 values.

98c

Infants' White Canvas Mary Janes

Several hundred pairs white canvas Mary Jane pumps. Sizes 1 to 5. 75c value.

49c

Easter Footwear for Boys, Girls and Children

GIRLS' DRESS SHOES

Pretty, well-made, good-wearing shoes that sell most everywhere at \$2 a pair. Patent, dull and white canvas. All sizes to 2.



\$1.50

WHITE TOP SHOES

For girls. Dainty Spring Styles. Patent Vamps. White Buckskin Tops. \$2.25

WHITE CANVAS SHOES

For girls. Dainty style. Good quality. All sizes to 2. Regular \$1.50 values at

98c

SHOES AND PUMPS

For Girls. Good wearing makes in patent and dull. Sizes 2 to 2. \$1.50 values.

SCOUTING SHOES

For Boys. Stout strong wearing uppers and elk soles. Sizes to 13 1/2. \$2 values. \$1.25

CALFSKIN SHOES

For Boys. Good sturdy tops and strong soles. Sizes to 13 1/2. \$1.50 values at

\$1.00

INFANT'S SHOES

Comfortable toe room, last in patent and dull. Sizes to 5. 75c values at

59c

BOYS' DRESS SHOES

Stylish, good wearing, good fitting shoes that are excellent big values. Gun-metal and patent leather. Sizes to 5 1/2. \$2.50 values.



\$1.50

HEAVY TRAVEL TO ATLANTIC CITY

Easter Rush Started Yesterday; Special Trains From West and North

The rush to the seashore for Easter started yesterday. The first train, made up of eleven all steel cars, reached Harrisburg over the Pennsylvania Railroad from Pittsburgh at 3:10 in the afternoon. It was scheduled for Atlantic City. Four carloads of excursionists came over the Pennsylvania Railroad from Buffalo. The schedule for to-day includes four special trains from Pittsburgh to Atlantic City; one train from the North, and at least four carloads from Harrisburg. The rush from the Cumberland Valley and Harrisburg will go through to-morrow morning. Additional cars will be placed on regular trains.



HOW ONE WOMAN GOT HER FURNITURE AT A BARGAIN

The amount Mrs. G— had to spend was limited. It would buy a bed, a mattress and springs and a small rocker. But Mrs. G— needed a dresser, a small table, a dining table and several chairs besides. How could she get them? Well, there were the WANT ADS. She had never taken much stock in them, but that night she read and checked with a pencil as she read. The bed and dresser were bought in North Third street, and some other articles out in Berryhill street. And the dining table and chairs in Walnut street she had \$2.15 left!

Now Mrs. G— is strong for Telegraph WANT ADS. She knows that one profits through reading them.

vana Railroad from Pittsburgh at 3:10 in the afternoon. It was scheduled for Atlantic City. Four carloads of excursionists came over the Pennsylvania Railroad from Buffalo. The schedule for to-day includes four special trains from Pittsburgh to Atlantic City; one train from the North, and at least four carloads from Harrisburg. The rush from the Cumberland Valley and Harrisburg will go through to-morrow morning. Additional cars will be placed on regular trains. The Pennsylvania is not doing all the business. The Philadelphia and Reading Railway Company will run four trains through from Harrisburg to-day and to-morrow. On the main line from Pottsville and Allentown at least a half dozen trains are scheduled. According to local ticket agents seashore business out of Harrisburg this year is far ahead of that of the past three years.

CHAMBERSBURG CO. RAISES WAGES

By Associated Press. Chambersburg, Pa., April 21.—A notice was posted at the plant of the Chambersburg Engineering Co. to-day announcing that effective Monday, May 1, the 400 employees would be given an increase of 10 per cent. in wages exclusive of apprentices, who will be cared for by the bonus system, each apprentice being given \$60 a year bonus or \$240 for the full time for receiving a trade certificate. It is believed this bonus will bring the forty-nine apprentices, who struck early in the week, back to work.

MORE PARK ROOM FOR AUTOMOBILES

Pennsylvania Railroad to Provide Additional Space and New Rules For Patrons

More room will be provided at the Pennsylvania Railroad station for the accommodation of automobiles. With this change will come new rules and regulations relative to the handling of autos. For a long time cars awaiting arrivals have parked along the outside platform, in front of the restaurant. On and after May 15 all automobiles must park on the west side of the entrance to the station along the grass plot. Plans were completed yesterday for removing a ten-foot space from the grass plot and setting the curb back to make room for automobiles. When the additional room is provided the use of the entrances to the station will be for patrons only. It cannot be used as a public thoroughfare. Cars awaiting arrivals will park along the grass plot until the passengers are ready when the automobiles can be run to the platform.

Carlisle Indian School Runaway Robs Post Office

James E. Blair, a runaway from the Carlisle Indian School, arrested yesterday morning, was held under \$500 bail last night by Alderman Hovetter, charged with entering the Post Office and general merchandise store owned by Harry Weaver. Blair was arrested yesterday morning by Railroad Officers Eckert and Chubb after he had been seen acting suspiciously and carrying a bag full of clothing. Blair said that he had broken the seal on a freight car and stolen the goods, but an investigation during the day brought to light the robbery at the Post Office. The stolen property was valued at \$16. Only a small amount of cash was taken. C. D. Miles, another railroad officer, was shot in the wrist by another thief, who escaped after a hot chase. This man, it is believed, was trying to steal a bicycle from the Division street freight station.

HOME FOR EASTER Russell A. Hoke, who is studying engineering at the University of Pennsylvania, will spend the Easter vacation with his parents on North Second street. Edward Means, of Philadelphia, a classmate, will be his guest. The young men came to the city to-day in an automobile.

RAILROAD NEWS

RAILROAD WILL HELP FIGHT FIRE

Forestry Department Hears From Company Operating in Huntingdon County

The Juniata and Southern Railroad Company, operating in the coal fields of Huntingdon county, announced to-day that it would co-operate with the Department of Forestry in an effort to prevent forest fires along its right of way. To this end a patrolman will be employed to follow every train during the dangerous season. This railroad is the first in Pennsylvania to take this action, although the Juniata and Southern railroads have been employing patrolmen during forest fire seasons for several years. It is anticipated that other railroads in Pennsylvania will follow the example of the Juniata and Southern. The patrolman will probably be equipped with a gasoline speeder, and with tools for extinguishing small fires. Larger fires will be immediately reported to the nearest forest officer. The patrolman will spend every day on the tracks. The Juniata and Southern runs through the Brumbaugh State Forest and other wooded areas in Huntingdon county for a considerable distance, and the forest fire officers are very much pleased with the company's offer of co-operation.

Lehigh Valley Railroad Is Seventy Years Old Today

The Lehigh Valley Railroad Company is seventy years old to-day. Its original charter bears the date of April 21, 1846. The Pennsylvania Railroad Company was seventy years old on April 13, and is, therefore, about a week older than the Lehigh Valley. Both roads are thriving very well at three-score and ten. A small part of the Lehigh Valley Railroad, as it now exists, really had its start eighty-six years ago. On April 7, 1830, the General Assembly of Pennsylvania authorized the Beaver Meadow Railroad and Coal Company to construct and make a single or double railroad from the Beaver Meadow coal mines, in the County of Northampton, to a convenient point on the River Lehigh, at any place above Mauch Chunk. The Beaver Meadow Company was merged into the Lehigh Valley Company on July 8, 1884. Its line extended from Mauch Chunk to Penn Haven, thence to Beaver Meadow and adjoining coal mines.

Scarcity of Laborers Is Delaying Railroad Work

Scarcity of laborers is holding up Pennsylvania Railroad improvements in Harrisburg. The work on the foundations for the new freight station in South Harrisburg is progressing slowly. The one man above has been a big help but more men are needed. It was said to-day that there is employment for 200 laborers. Surveys have been made for the new turntable east of the Pennsylvania Railroad Station, but the work will not start before May 15, if then. The track and construction forces are working on the track improvements in the local and Enola yards.

Standing of the Crews

HARRISBURG SIDE Philadelphia Division—124 crew first to go after 4:15 p. m.: 133, 115, 105, 126, 120, 132. Engineer for 113. Firemen for 126, 120. Conductor for 126. Brakeman for 105. Engineers up: 126, 120, 133, 115, 105, 126, 120, 132. Firemen up: Messersmith, Smith, Rupp, Howe, Johnston, Shimp, Bowers, Eckrich, Morris, Morris, Eckman, Powers, Strickler. Flagman up: Williams. Brakemen up: Looker, Gillett, McNeal, Beale. Middle Division—251 crew first to go after 4:40 p. m.: 55, 28, 33, 30, 21, 25, 51, 19, 22. Engineers for 21, 21, 19, 22. Firemen for 21, 21, 25. Conductor for 19. Flagman for 35. Engineers up: 25 (two), 21, 21. Engineers up: Steele, Kauman, Shirk, Hummer, Baker, Howard, Grove. Firemen up: Bulick, Liebau, Stuffer, Burkett. Conductors up: Leonard, Klotz, Glace, Rhine. Flagmen up: Miller, Kauman. Brakemen up: Miller, Prosser, Garlin, Liden, C. H. Myers, Poltz, Smith, Yoh, Messinger, Raisner, Humphrey, Himmelright, Henry, Williams, Cameron. ENOLA SIDE Philadelphia Division—251 crew first to go after 4:15 p. m.: 255, 261, 209, 214, 220, 259, 226, 257, 227. Engineers for 251, 261, 209, 226. Firemen for 255. Conductors for 28, 55, 59. Flagman for 5, 7, 14, 24. Brakemen for 1, 5, 16, 21, 33, 37, 54, 57, 59. Conductor up: Carson. Brakemen up: Snyder, McDermott, Seabolt, Welsh, Yost, Dougherty, Hivel. Middle Division—104 crew first to go after 2:40 p. m.: 115, 119, 105, 102, 106, 113, 103. Engineers for 115, 102, 106. Firemen for 105. Conductor for 105. Flagman for 119. Brakemen for 104, 115, 105. Yard Crews—To go after 4 p. m.: Engineer for 124. Firemen for second 108, 130, first 102, second 102. Engineers up: Anthony, Neumyer, Rider. Firemen up: Yost, C. H. Hall, Hinkle, L. C. Hall, Brown, Handboe, Bickhart, Sellers, Eichelberger.

THE READING

Harrisburg Division—15 crew first to go after 11:30 a. m.: 17, 12, 1. Eastbound—86 crew first to go after 6 a. m.: 69, 57, 67, 58, 54, 68, 57, 62, 63. Engineer for 62. Firemen for 62, 57, 1. Conductor for 62. Engineers up: Sassaman, Crawford, Tipton, Merkle, Massimore, Petrov, Barnhart, Morrison, Sweezy, Voland. Firemen up: Sullivan, Stambaugh, Blumenstein, Miller, Fornwalt, Bingaman, Alford, Kelly, Stephens, Gelb, Smith, Peters, Kiefer, McMullan. Conductor up: Orris. Brakemen up: Korman, Rheam, Siler, Shultz, May, Shambaugh, Farmer, Seichman, Smith, Sullivan, Hiner, Redman, Eisenberger, MacMahon, Harter, Faxton, Felker, Strickler, Bittle, Rittinger, Shippe.

Methodist Bishops Go Into Executive Session

Dawson, Pa., April 21.—The nineteen bishops of Methodist Episcopal Church, assembled at Linden Hall, the home of Mrs. Sarah B. Cochran, near here, took up their work in executive session to-day. It was announced that Bishop Earl Cranston, of Washington, D. C., and Bishop John W. Hamilton, of Boston, having reached the age of 72 years, would be retired at the meeting of the general conference in Saratoga Springs, N. Y., next month. It also was announced that six bishops had died. These places will be filled by the general conference.

LIVINGSTON'S LAST CALL FOR LIVINGSTON'S

EASTER CLOTHES!



OUR stock has again been added to—another shipment of Ladies' Coats and Dresses have arrived in time for Easter—each style will fascinate you, for they have style, tailoring and finish that only the exclusive shops usually show. Don't deprive yourself of an Easter Garment, whether you have the cash or not, Livingston's Easy Payment Plan will help you.

Men's & Young Men's Clothes

The new Pinch-Back models—English and conservative cuts as well, in the season's latest fabrics. Don't be without one of these stylish garments for Easter Sunday. We gladly give you a charge account and pay us weekly or twice a month as it suits you best. Prices, \$12 to \$27.50



Boys' Clothes

Get the Boys New Suits For Easter. Don't let them be without one of these beautiful little garments, Balkin style, and gathered back models—in any color desired. Bring the little fellows in.



Visit Our Stout Dept.

A New Shipment of Stout Suits, Skirts, Coats, Dresses and Waists. Sizes up to 52, and All Made in That Slim Effect.

Ladies', Misses' and Children's HATS

Ladies' and Misses' Hats. A collection of Hats for Easter at special prices, 79c to \$2.98. Each One Reduced. Kiddies' Caps and Hats. Special for Saturday 49c. Beautifully Trimmed.



Children's Coats

Navy, Brown and Plaids, \$1.98 up.

LIVINGSTON'S 9 S. Market Square

Keep Advertising and Advertising Will Keep You