

BANK STATEMENTS

REPORT OF THE CONDITION OF THE CENTRAL TRUST COMPANY, of Harrisburg, Pa., at the close of business, March 30, 1916.

MAY FORFEIT STATE MONEY

Carlisle, Pa., April 7.—Cumberland County Commissioners have been informed that they will forfeit the amount of the mothers' pension fund for this county if they do not take action to establish the plan here by May 31.

SENATE RETAINS VOLUNTEER PLAN

Upholds Provision by Vote of 36 to 34, but It May Be Abandoned

Washington, D. D., April 7.—The Senate retained the Federal volunteer provision in the Army bill late yesterday by a vote of 36 to 34, rejecting Senator Lee's amendment to strike the section from the bill.

BANK STATEMENTS

REPORT OF THE CONDITION OF THE

Pennsylvania Surety Company

REPORT OF THE CONDITION OF THE Pennsylvania Surety Company of Harrisburg, No. 14 South Second Street, of Dauphin County, Pennsylvania, at the close of business, March 30, 1916.

Advocates of the National Guard as the first line of defense behind the regular army supported the amendment vigorously, and the struggle was one of the hardest fought in the Senate after the defeat of the Military Affairs committee last week, when a proposal to create a National Guard section of the army general staff was written into the bill.

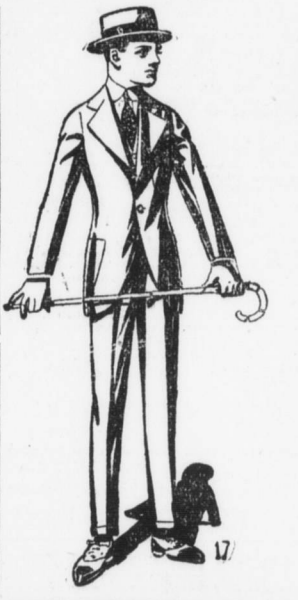


LIVINGSTON'S, 9 South Market Sq. Your Easter Clothes Men, Women, Young Men, Misses and the Young Ones, can have their clothes in time for Easter...

Livingston's Way Is the Best Way

SPECIAL—300 Ladies' Waists White Voile, White Jap Silk and Striped Silk, in all shades. 98c SPECIAL—Children's Hats Beautifully Trimmed, assorted patterns, all sizes. 49c, 79c & 98c SPECIAL—Children's Coats Blue and Shepherd's Plaids, at \$1.98 and up SPECIAL—Boys' Suits 6 to 17—Fast Colors, Balkan Styles. \$1.98 and up

The Variety of Coats, Suits and Dresses this Season is larger and more elaborate than ever. Our styles are right-to-the-minute, and each garment has its snap and appearance you usually look for.



We Will Be Open Every Night From Now Until Easter Until 8 P. M. for the Benefit of those Who Are Unable to Come Early

LIVINGSTON'S, 9 South Market Sq.

CORPORATE TRUSTS

Total amount (face value) of Trusts under deeds of trust or mortgages executed by Corporations to the Company as Trustee to secure issues of corporate bonds, including Equipment Trusts, \$800,000.00

REPORT OF THE CONDITION OF THE

Mechanics Trust Company

REPORT OF THE CONDITION OF THE MECHANICS TRUST COMPANY, of Harrisburg, No. 23 North Third Street, Harrisburg, Dauphin County, Pennsylvania, at the close of business, March 30, 1916.

Militant Borax

Plain soap is like a lazy mule. It has the power but it takes a lot of work to get it into action!

Borax is a sort of driver for soap. Borax takes soap by the scruff of the neck and says "Come on here and get busy."

STATE WARNS OF FAKES ABROAD

Alleged Veterinarians Who Have Been Victimized the Farmers Are Heard Of

A warning has been given to farmers throughout the State by the Department of Agriculture against persons who have been representing themselves as versed in veterinary medicine and surgery and against all other schemes connected with the livestock industry.

COAL PRICE PROBE WILL GO RAPIDLY

Judge Gawthrop Says That There Will Be Every Effort to Get the Facts

A dispatch from Philadelphia says that the State Commission appointed to investigate the increase in the price of anthracite coal following the placing by the Legislature of a tax on that commodity proposes to force the refund of the extra money charged the dealers and consumers previous to the time the tax was declared illegal.

TELEGRAPH WANT AD

TELEGRAPH WANT AD WILL SELL THAT AUTO TO SPEAK ON THEATER At the services in Ohay Shalom Temple to-night Rabbi Freund will speak on "The Theater: Function and Opportunities."



Ouch! Corns! MAGIC CORN LIQUID 15c the Bottle Forney's Drug Store 31 N. Second St.

STATEMENT OF THE Dauphin Deposit Trust Co. Harrisburg, Pa. MARCH 30, 1916. RESOURCES Cash and Cash Items \$166,005.30 Due from Banks \$40,506.15 United States Bonds 150,000.00 Loans and Investments 2,601,551.33 Building 50,000.00 Overdrafts 15.66

NUXATED IRON

Increases strength of delicate nerves, rindown people 200 per cent. in ten days in many instances. \$1.00 per bottle.

FLORIDA Jacksonville

From Philadelphia every Wednesday and Saturday. Inquire at the station for rates and choice of stateroom accommodations. All outside rooms. Fine steamers. Best service. Tickets limited to March 31.

CREME LILAS Non-greasy Toilet Cream — Keeps the skin soft and velvety in any weather. An exquisite Toilet Preparation.

Surface Tells How to Make Peaches Grow

State Zoologist H. A. Surface says that people whose peach and other trees were frozen this year can make their orchards produce if they will think about it.

Mothers! Here's Something New For Croup and Cold Troubles An External Treatment That Does Away With Internal Medicines and Chest Protectors. You Can Let the Children Run Outdoors in All Weathers and Get Their Needed Fresh Air and Exercise.

AGENTS IN HARRISBURG Brindle's Pharmacy, J. Nelson Clark, Cotterell's Pharmacy, Wm. E. Marshall, John K. Garland, Chas. T. George, Golden Seal Drug Store, Geo. A. Gorgas, E. Z. Gross, Kaufmann's Drug Store, Croll Keller, C. F. Kramer, Kitzmiller Pharmacy, E. C. Smith, P. G. Leidich, Logan Drug Co., Wm. E. Marshall, C. A. Moller, Park's Drug Co., A. M. Rickert, W. F. Steever, Thompson's Pharmacy, T. A. Therley, Walter's Pharmacy, S. K. Wilhelm, DILLBURG, M. W. Britcher, DUNN AND SON, E. C. Smith, ELIZABETHVILLE, Earnest L. Stever, ENOLA, HOLME'S DRUG STORE, NACCA'S PHARMACY, HERSHEY, Hershey Store Co., DRYE DEPT., MARYSVILLE, Holme's Dr. Stores, LYLENS, W. H. Usher, Wm. Gordon Smith, MICFLINTOWN, W. H. Banks & Co., MIFLINTOWN, Chas. E. Walley, L. Banks & Co., CUMBERLAND, Eby's Modern Pharmacy, LIVERPOOL, S. M. Shuler, STEELTON, D. K. Martz, D. A. Peters, Est, WILLIAMSTOWN, J. C. Meehan, J. Ralph Harner