

Poslam and Poslam Soap Work Wonders On Any Affected Skin

ECZEMA Is Quickly Healed. COMPLEXIONS Are Cleared Overnight. PIMPLES and Blemishes Banished.

By taking a small part of the skin affected with Pimples, Rash, Blisters, Etc., or which is Unduly Itched, Itching or Chafing, and applying thereto only a small quantity of Poslam, an immediate demonstration may be had of its remarkable healing power and enough Poslam for the purpose may be obtained free by the use of the coupon here.



For FREE SAMPLE of Poslam, sign THIS COUPON and send to Emergency Laboratories, 32 W. 25th St., New York. Send Free Sample of Poslam to Name _____ Address _____

Poslam puts a stop to itching at once, and its readiness in healing small surfaces is evidence of its rapid action in the eradication of All Eczemas, Acne, Tetter, Salt Rheum, Barber's Itch, Scalp Seals; in short, every surface skin affection. So exhaustively has the merit of Poslam been proven and so uniform is its work of healing under all conditions, that no one suffering any Skin Trouble can afford to ignore its benefits.

I. C. S. Report Shows Big Saving in Two Months

Scranton, April 6.—Eight months ago a committee of businessmen took over the active management and direction of the International Correspondence Schools, and in their first report, just issued, the new managers show a saving of \$193,000 over 1915 in the expenses of the enterprise for the months of January and February. They also reduced the indebtedness \$55,000. In addition the board of control issues a warning to stockholders not to sell or exchange their stock in the International Textbook company for shares in other concerns, as the present company is solvent and their stock is valuable.

PUBLISHER DOUGLAS DIES By Associated Press Edinburg, April 6.—The death occurred here Tuesday of David Douglas, the noted publisher. One of his greatest services as a publisher here was the bringing out in 1882 of a cheap series of reprints of American novels. The series had a great popularity and introduced to the British public for the first time several American authors, including Henry James and W. D. Howells.

OUTPUT OF BEER REDUCED By Associated Press London, April 6.—A reduction in the output of beer by 28 per cent, as compared with 1915 and 1914 and a curtailment of importation of brewing material by 33 1/2 per cent, will be effected by an arrangement with the brewers, according to announcement made to the House of Commons by Walter Runciman, president of the Board of Trade.

GOVERNMENT CROP REPORT FOR STATE

Amount of Wheat on Farms Much Larger Than in Prior Years; Plenty of Oats

Washington, D. C., April 6.—A summary of the March crop report for the State of Pennsylvania and for the United States, as compiled by the Bureau of Crop Estimates (and transmitted through the Weather Bureau), U. S. Department of Agriculture, is as follows:

Wheat on Farms State—Estimated stocks on farms March 1 this year 8,610,000 bushels, compared with 5,462,000 a year ago and 6,559,000 two years ago. Price on March 1 to producers, \$1.13 per bushel, compared with \$1.42 a year ago and \$0.95 two years ago. United States—Estimated stocks on farms March 1 this year \$242,000,000 bushels, compared with 152,903,000 a year ago and 151,796,000 two years ago. Price on March 1 to producers, \$1.03 per bushel, compared with \$1.34 a year ago and \$0.83 two years ago.

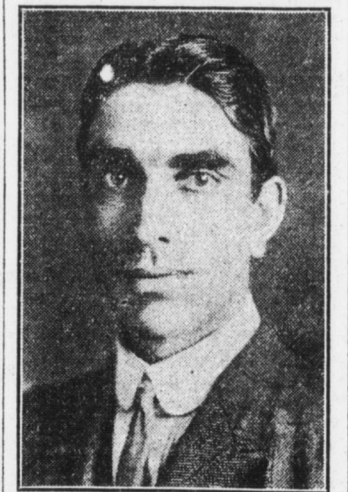
Corn on Farms State—Estimated stocks on farms March 1 this year 21,700,000 bushels, compared with 21,762,000 a year ago and 21,682,000 two years ago. Price March 1 to producers, 79 cents per bushel, compared with 83 cents a year ago and 71 cents two years ago. United States—Estimated stocks on farms March 1 this year 1,146,000,000 bushels, compared with 910,894,000 a year ago and 866,352,000 two years ago. Price March 1 to producers, 68.2 cents per bushel, compared with 75.1 cents a year ago and 69.1 cents two years ago.

Merchantable Quality State—The percentage of the 1915 crop which was of merchantable quality is estimated at 80 per cent, compared with 88 per cent of the 1914 crop and 83 per cent of the 1913 crop. United States—The percentage of the 1915 crop which was of merchantable quality is estimated at 71.3 per cent, compared with 74.5 per cent of the 1914 crop and 80.1 per cent of the 1913 crop.

Oats on Farms State—Estimated stocks on farms March 1 this year 18,600,000 bushels, compared with 12,554,000 a year ago and 15,925,000 two years ago. Price March 1 to producers, 59 cents per bushel, compared with 59 cents a year ago and 47 cents two years ago. United States—Estimated stocks on farms March 1 this year 537,000,000 bushels, compared with 379,269,000 a year ago and 419,481,000 two years ago. Price March 1 to producers, 42.7 cents per bushel, compared with 52.1 cents a year ago and 38.9 cents two years ago.

Barley on Farms State—Estimated stocks on farms March 1 this year 47,000 bushels, compared with 45,000 a year ago and 49,000 two years ago. Price March 1 to producers, 65 cents per bushel, compared with 80 cents a year ago and 75 cents two years ago. United States—Estimated stocks on farms March 1 this year 60,500,000 bushels, compared with 42,889,000 a year ago and 44,126,000 two years ago. Price March 1 to producers, 59.6 cents per bushel, compared with 67.7 cents a year ago and 51.1 cents two years ago.

This Is the Birthday Anniversary of—



C. B. LANGLETZ Manager of the Union Planning Mill Company since February 15, 1911, and formerly foreman at the mill, at 824-82 North Seventh street. Mr. Langlettz has been a resident of this city all of his life, and for many years has been interested and engaged in lumber mill affairs.

ROOSEVELT IS OUT FOR PRESIDENCY

[Continued From First Page.]

head the fight against Wilsonism and for adequate preparedness and Americanism if the country wants him to do so, and that desire is reflected in the action of the Republican convention. The colonel made known his attitude in a conversation with a visitor from a nearby State, who has been

Deafness Cannot Be Cured

by local applications, as they cannot reach the diseased portion of the ear. There is only one way to cure deafness, and that is by constitutionally remedying the cause. Deafness is caused by an inflamed condition of the mucous lining of the Eustachian Tube. When this tube is inflamed you have a running sound or imperfect hearing, and when it is entirely closed Deafness is the result, and unless the inflammation can be taken out and this tube restored to its normal condition, hearing will be destroyed forever; nine cases out of ten are caused by Catarrh, which is nothing but an inflamed condition of the mucous surface. We will give one Hundred Dollars for any case of Deafness (caused by Catarrh) that cannot be cured by Hall's Catarrh Cure. Send for circulars, free. P. J. CHENEY & CO., Toledo, O. Sold by Druggists, 75c. Take Hall's Family Pills for constipation.

NUXATED IRON

Increases strength of delicate, nervous, rundown people 200 per cent, in ten days. \$100.00 FORFEIT. Druggist always carry it in stock.

FOUNDED 1871

Bowman's

BELL—1991—UNITED

Once a Week, Every Department Has Its Own Housecleaning of Broken and Small Lots. All Are Assembled, Lowered in price, and FRIDAY BARGAINS

Wall Paper

10 rolls sidewall, 20 yards border. Suitable for upstairs, livingrooms, diningrooms; halls, bedrooms and attics. Friday price, 75c. BOWMAN'S—Fourth Floor

Hosiery and Underwear

Women's Fiber Silk Hose—plain black; double soles; wide garter tops. Friday price, pair 39c. Women's Union Suits—open mesh; sleeveless; knee length. Friday price 29c. Children's Vests—bleached; Spring weight; long sleeves. Friday price, 17c. Men's Union Suits—Spring weight; long sleeves; ecru color. Friday price, 42c. BOWMAN'S—Main Floor

Furniture

Fifty Card Tables—mahogany finished; green leatherette tops; self locking legs; fitted with furniture glides for hardwood floors. Each table packed in separate carton. Friday price, \$1.89. Bamboo Tabourettes—various styles in the lot. Friday price, 49c. Five Mattresses—slightly soiled from handling. Used as samples. Friday price, \$3.50. BOWMAN'S—Fifth Floor

Wool Dress Goods

500 yards 44-inch storm serge; all wool; good quality; solid shades of navy, black; fine, soft texture. Friday price, yd., 79c. BOWMAN'S—Main Floor

SILKS

Satin Foulards—set figures and stripes; 20 inches wide. Friday price, yd., 44c. Satin Stripe Wash Silks—two-tone effects; 33 inches wide. Friday price, yd., 35c. Navy Satin Charmeuse—40 inches wide. Friday price, yd., \$1.25. Novelty Stripe Satin Mes-salines—tan and Copenhagen; 36 inches wide. Friday price, yd., 79c. BOWMAN'S—Main Floor

Muslinwear

Women's Gowns—low neck, short sleeves; made of nainsook; lace and insertion trimmed. Friday price, 33c. Children's Gowns—fine cambric and nainsook; high neck; long sleeves; yoke of fine tucks and insertion; embroidery trimmed at neck and sleeves. Friday price, 25c. Children's Drawers—made of muslin and cambric; hemstitched and tucked ruffles; sizes 2 to 6 years. Friday price, 5c. BOWMAN'S—Third Floor

Continuing—

The Sale of Crepe de Chine Blouses

The highest values obtainable under present silk conditions offered in six distinct styles at \$2.00

Note the quality, and consider that silks are scarcely to be had. Shades of pink, maize, flesh, Nile, peach and white, in: —A simple style with a vestee effected by neat hemstitching. —Embroidered designs intermingling with pleats in front. Plain back. —A perfectly plain effect; neat revers joining plain, round collar. —A similar style; plain; two sets cluster buttons; loop fastenings. —Lace vestee effect and lace forming collar; embroidered front. —Combination of silk and wide insets of lace, elaborate, yet refined. BOWMAN'S—Third Floor.

Infants' Wear

Baby Caps—silk poplins, messalines and corded silks in white; ribbon and lace trimmed; also embroidered. Friday price, 25c. Infants' Flannelette Gowns and long kimonos, plain white and white trimmed with pink and blue ribbons; 6 months to 2-year sizes; slightly soiled. Friday price, 25c. BOWMAN'S—Third Floor

Domestics

Unbleached Muslin—round, even thread; will bleach easily; 32 inches wide; cut from the piece. Friday price, yard, 5 1/2c. Outing Flannel—short lengths; 27 and 36 inches wide. Friday price, yard, 6c. Duckling Fleeces and flannelettes, in light and dark patterns; cut from the piece. Friday price, yard, 7 1/2c. Cheese Cloth—slightly soiled; 36 inches wide; green only. Friday price, yard, 3c. Unbleached Sheetting—90 inches wide; useful remnant lengths. Friday price, yard, 26c. Bed Blankets—large size; 70x80 inches; white, with pink or blue borders; heavy weight and nap. Friday price, pr., \$1.10. Bed Ticking—blue, white and fawn stripes; 31 inches wide. Friday price, yd., 8c. Pillow Case Muslin—unbleached; even, round thread; 45 inches wide. Friday price, yd., 12 1/2c. Sheets—double bed size; made of Utica sheeting; 90x99 inches; slight mill imperfections. Friday price, 98c. BOWMAN'S—Basement

Men's Trousers

Men's Trousers—dark mixtures, in sizes 32 to 40; suitable for work. Friday price, \$1.50. BOWMAN'S—Second Floor

Boys' Clothing

Norfolk Suits, in fancy stripes; patch pockets, sewed-on belts; 2 pair pants; sizes 6 to 14 years. Friday price, \$2.49. Blouse Suits—blue and white stripes with plain blue collars; sizes 5 to 10 years. Friday price, 98c. BOWMAN'S—Second Floor

Kitchenwares

Clothes Baskets—imported willow; 26 inches long; limited quantity. Friday price, 29c. Aladdin Aluminum Berlin Kettles—6-qt. capacity; bail handle; automatically held in position so as to keep cool. Friday price, 89c. Economy Shelf and Lining Paper—used for pantry and cupboard shelves, sideboard and dresser drawers; continuous roll containing approximately 100 linear feet. Friday price, roll, 19c. Mops—large size oil and dust mop, combination; for hardwood floors, walls and woodwork; complete with polished wood handle. Friday price, 75c. Pastry Boards—made of select lumber; 18x24 inches. Friday price, 39c. Wood Clothes Props—one end notched, the other end pointed; 8-ft. length. Friday price 5 for 25c. Water Pitchers—white and white enamel; 4-qt. capacity. Friday price, 43c. BOWMAN'S—Basement

Laces and Embroideries

Val. edges and insertions, match sets; 12-yard piece, 25c. Organdie edges, 4 to 6 inches wide; yd., 8c. Embroidery edges, 4 to 8 inches wide; yd., 11c. Ribbon mill ends, plain and fancies; 4 to 6 inches wide; yd., 15c. BOWMAN'S—Main Floor

SHOES

Women's Pumps in various leathers; in sample sizes only. Friday price, pair, \$1.98. Women's Pumps—in sample sizes; in black and colors. The finest shoes made in New York; and newest styles. Friday price, pr., \$3.15. Spats—all the wanted colors. Pair, \$1.00 upwards. BOWMAN'S—Main Floor

Wash Dress Goods

Dress Gingham—in checks and stripes; 32 inches. Friday price, yd., 9c. Figured Percalines—36 inches wide. Friday price, yd., 9c. Batiste—in checks and stripes; 28 inches wide. Friday price, yd., 17c. Checked Voile—black and white checks; 40 inches. Friday price, yd., 5c. Colored Poplins—28 inches wide. Friday price, yd., 15c. Woven Shirting Madras—wide and narrow stripes; 32 inches wide. Friday price, yd., 17c. Crepes—floral designs; 32 inches wide. Friday price, yd., 9c. BOWMAN'S—Main Floor

China

Table Tumblers—blown glass, daisy floral cutting. Friday price, doz., 60c. Baby Plates—American porcelain; check decoration. Friday price, 15c. Water Sets—consisting of 5-pt. jug and six tumblers, blown glass, daisy cutting. Can also be used as lemonade set. Friday price, set, 73c. Porcelain Plates—imported; blue willow decoration; 5, 6 and 7-inch sizes. Friday price, doz., 60c. Artificial Roses—six roses interspersed with foliage in round pasteboard carton for 8-inch fern dish. Limited quantity. Friday price, 49c. BOWMAN'S—Basement

Fiber Suit Cases

Fiber Suit Cases—round handle, lock and two catches; 24 inches long. Friday price 80c. BOWMAN'S—Second Floor

Leather Goods

Belts—some are slightly soiled. Friday price, 15c. Strap Purses—lot of the new vachette strap purse. Friday price, 69c. BOWMAN'S—Main Floor

White Goods

Voile—fine combed yarn, ivory white voile; 40 inches wide; extra quality. Friday price, yd., 12 1/2c. Boudoir Spreads in white, hemmed ready for use; light weight; fine for summer use. Friday price, \$1.25. BOWMAN'S—Second Floor

Advertisement for 2 in 1 Shoe Polishes 10¢. Includes image of shoes and text: 'TURN ON THE FOOT LIGHTS BLACK WHITE TAN. KEEP YOUR SHOES NEAT. THE F. F. DALLEY CO. BUFFALO, N.Y.'

Advertisement for Silver Anniversary King Oscar 5c CIGAR. Text: 'Is 25 years old this month. Think what this means to you, Mr. Smoker, absolute reliability. A quarter of a century of increasing popularity is not accidental. JOHN C. HERMAN & CO. Harrisburg, Pa. "The Daddy of Them All."'

Advertisement for The New Labor Law. Text: 'The new Workmen's Compensation Act is now in effect. If you are an employer of labor you should be familiar with every phase of this most important piece of legislation. We are prepared to supply this act in pamphlet form with side headings for easy reference. Single copies 25c with very special prices on larger quantities. The Telegraph Printing Co. PRINTING—BINDING—DESIGNING PHOTO-ENGRAVING HARRISBURG, PENNA.'

Large advertisement for VICK'S VAPORUB SALVE. Text: 'Head Stopped Up? Can't Breathe? Try the Vick Vap-O-Rub Treatment. Applied in Salve Form Over Throat and Chest Relieves by Inhalation and Absorption. Vapor treatments are best for inflammations of the air passages. The vapors carry the medication direct to the inflamed surfaces without disturbing the stomach, as internal medicines will do. A very convenient vapor treatment is a good application of Vick's "Vap-O-Rub" Salve over the throat and chest, covered with a warm flannel cloth. The body heat releases vapors that are inhaled with every breath, opening the air passages, loosening the phlegm, and healing the raw surfaces. For deep chest colds, first apply hot wet towels to open the pores. Vick's is then absorbed through the skin, taking out tightness and soreness. 25c, 50c, or \$1.00. VICK'S VAPORUB SALVE'