

FOUNDED 1871

Bowman's

First of Holland Rose Bushes Here in Several Varieties.

Bowman's

BELL-1991-UNITED

Six Times More the Curtain Will Rise On the Bowman - Majestic

Georgette Crepe Assumes Leadership in New and Very Fine

SPRING BOLUSES

A number of models of striking newness and so differently pleasing.

Because Georgette crepe is going to be the leading fabric, we have gathered here the most striking models; and at this time tell of the better grades.

—Georgette, in white; hand embroidered in white and maise; inset of lace, \$12.95.

—Flesh Georgette; embroidered in white and pink; bead trimming, \$10.50.

—Rose Georgette; white collar and vestee; large frill edged in white, \$8.50.

—Flesh Georgette; heavily embroidered in rose, blue and white, \$11.95.

—Maise Georgette; very large frill; paneled with lace.

—Rose Georgette with two dainty pockets stitched in an oriental design.

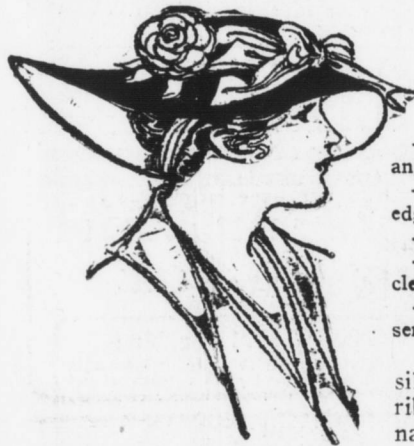
Lingerie Blouses in voiles, lawns and batistes; also stripes; here in a complete variety of the wanted grades; beginning at 95c.

BOWMAN'S—Third Floor.

Calling Attention to The Wondrous Hats

That Are Increasing the Standard of Value at \$5.00 and \$6.50

You who have seen, will agree, we're sure, that a finer collection of hats so differently new and jaunty is not to be found in Harrisburg.



BOWMAN'S—Third Floor.

Take, for instance, just a handful of the different styles, and in name they'll be known as

—Angora braid — a combination of angora and lisere.

—Large sailor hats, with ostrich edge.

—Tricornes with ribbon wings.

—New Sport hats in a variety of clever shapes.

—A reversible Manila straw, resembling Panama, white with colors.

Smart Sailor Hats, lined with silk, and banded with grosgrain ribbon; high and wide; low and narrow; just as you like, at

\$2.98, \$3.50 and \$5.00

About Every Shape To Be Had Will Be Found In Our Assortment of Untrimmed Hats: \$1.98 to \$3.98

And in choosing an untrimmed hat here, you have the advantage of the smartest trimmer to suggest pleasing trims.

At 98c—are hemp sailors.

At \$1.49—Lisere in Milan shapes.

BOWMAN'S—Third Floor.

Makes Hair Dressing An Easier Task

A wavy switch which matches perfectly your own hair.

Just for Saturday we submit two unusually attractive values in hair switches.

20-inch lengths at \$1.17.

24-inch lengths at \$1.67.

The quality is good, the wave permanent and, best of all, nearly every switch consists of three separate mountings which may be used singly or together, as desired.

Real Hair Nets, \$1.00 per dozen.

Hair Goods Shop

BOWMAN'S—Third Floor

And Collars Are So Popular, Too!

A record in quantity of dainty styles now awaits you.

Organdie, lace and Georgette collars, collar and cuff sets, vestees and small collars.

Large circular collars and square collars, 25c to \$3.50

Collar and cuff sets 25c to \$2.50

Beautiful crepe vestees, some lace trimmed, \$1.00 to \$3.50

BOWMAN'S—Main Floor

FASHION SHOW

Two performances this evening and four to-morrow in which to see

Miss Catherine Crawford And Her Fashion Models

Present the Newest in

Gowns, Millinery, Shoes And Lingerie

All of which are furnished exclusively by this store



We are prepared as never before to be of utmost service in providing for the women the newest and most authentic styles in

Spring Suits, Coats, Dresses and Skirts

The very fact that hundreds of new faces are visiting these sections and as many garments going to new addresses might be proof aplenty.

But the word of approval, spoken by the hosts of women who have seen this Spring assemblage, both here and at the Majestic Theater, stands out as a supreme acknowledgement of appreciation.

We are prepared to give the individual the best attention possible in selecting that which is most fitting.

Women's and Misses' Suits

\$12.75 to \$29.50

\$35.00 to \$75.00

Women's & Misses' Coats Women's & Misses' Dresses \$5.98 to \$45.00 \$15.00 to \$45.00

BOWMAN'S—Third Floor.

"Deservedly Popular"

And We're Unrestricted in Conferring This Honor Upon Our

Department of Women's Fine Shoes

Only a Mention Is Necessary to Tell of the Wondrous Styles

Havana Brown, laced pr., \$5.00.

Ivory Kid, laced, pr., \$5.50.

Dark Gray, laced, pr., \$6.00.

Light Gray, laced, pr., \$6.50.

Light Gray, laced, pr., \$7.50.

Gray foxed, white tops, pr., \$9.00.

Gray foxed, ivory tops, pr., \$9.00.

Whittemore's Shoe Dressings, Polishes and Creams for all colors of leathers and fabrics. Special, 19c.

"De Luxe" French Broze Polish, 25c.

BOWMAN'S—Main Floor.

White calfskin, laced, pr., \$6.50.

White calfskin, button, pr., \$6.50.

White calfskin, button, pr., \$8.00.

Champagne, button, pr., \$6.50.

Fieldmouse laced, pr., \$6.50.

Ebony black laced, pr., \$6.50.

Widths—AAA to D. Sizes—2 to 7. Expert fitters in attendance.

The Department of Furnishings For Men Announces Its Completeness

—and calls attention to the class of Spring apparel, and its appeal.

Here the young man will find all the snap and dash that he might care to display.

Here the man of quiet taste will find just that rich, dressy character of apparel that befits his personality.

And to the woman buyer, we have here real men with real men's tastes and their judgment may be depended upon in every particular.

"Salisbury" Silk Shirts; French cuffs; tub and crepe silks; neat stripes and others more colorful for young fellows, \$3.75 to \$7.50.

"Alko" Crepe de Chine Shirts; satin stripes in rich colors; French cuffs, \$5.

Silk and Mercerized cotton; looks like silk; wears better; French cuffs; silk stripes, \$2.35.

"Yorke" Shirts; fine madras with satin stripe, \$2.25 and \$2.85. Light and the popular dark patterns; French cuffs.

"Yorke" Shirts; madras and crepes; \$1.50 and \$1.85; smart stripes; French cuffs.

"Salisbury" Shirts in fiber silk; various combinations of stripes and colors; \$1.65 to \$2.65; French cuffs.

"Manchester" Crepe Shirts in plaids; also plain crepe shirts in

BOWMAN'S—Main Floor.



pink, blue and lavender, \$1.15. French cuffs.

Percalés, mercerized madras, crepe and madras shirts; 39c to \$1.00. Soft and laundered cuffs. New patterns.

Eight new styles in "Triangle" soft collars now ready; plain and fancy; 2 for 25c, and 25c.

Dempster and Place Spring gloves; chamois and silk; including white and black. Silk, 65c and \$1; Chamois \$1.50.

Chamoisette and Leatherette Gloves; Mocha and chamois shades; 50c; black stitched backs at \$1.00.

A most complete assortment of silk four-in-hand neckwear in a diversity of newest patterns, and worthy of mention are the substantial silks used throughout. Price, 50c. Italian silk neckwear, up to \$3.00.

Women of Taste Are Selecting Gloves Here

Only the most dependable grades and most fashionable shades and stitchings were good enough to be placed in our freshly stocked lines for Spring.

We repeat the above because it is essential to remember when you are purchasing new gloves.

Following are a few:

The Ronsard Glove — 2-pearl clasps; two-tone embroidery; with contrasting fourchette in black, white and tan; pr., \$2.50.

Fownes' Zingara Glove — a fine kid glove in pearl and smoke gray; all sizes; pr., \$2.50.

The Marvella Glove — one-clasp; in French kid, with contrasting embroidery; in white, black and champagne, pr., \$2.00.

BOWMAN'S—Main Floor.

Fownes' Eugenie Glove — a two-clasp overseam glove in French kid; black and white with contrasting embroidery; pr., \$1.75.

Lambskin Gloves — 2-clasp; in all the wanted shades; pr., \$1.25 and \$1.50.

Kayser's and Fownes' Silk Gloves in the new Spring styles and shades; pr., 50c to \$3.00.

Quality Georgette Crepe

Ready with the most favored shades in qualities that will wear to your satisfaction. Prices, \$1.50 and \$1.75 yd.

New chiffons at \$1.00 yd.

BOWMAN'S—Main Floor

New Ribbons

For Hair Bows—a large assortment of ribbons, at 20c and 25c yd.

Narrow grosgrain ribbons for hat trimming, 17c to 25c yd.

BOWMAN'S—Main Floor

The Choice of Spring's Best Weaves and Patterns Here In Silks

Assorted in a Splendid Variety of new colorings and dependable qualities

Pierette Silk Crepe, in white and dove gray; 40 inches; yard, \$1.98

Indestructible Silk Voile, in white and black; 40 inches; yard, \$1.98

Pussy Willow Taffeta, in dove gray, Russia, navy, black, white, pink and mauve; 40 inches; yard, \$2.50

Satin de Luxe, in navy, gray and French blue; 36 inches; yard, \$2.00

Migel Soft-finish Taffeta, in gold, \$3.00

Novelty Taffeta, in black and white stripes and plaids; yard, \$1.25, \$1.50, \$1.75 and \$2.00

Chiffon Taffeta; best shades of navy; 36 inches; fine quality; yard, \$1.75

BOWMAN'S—Main Floor.

Shanghai Silk; our own importation from Liberty & Co.; in white and mauve; yard, \$1.50

Monabak Black Chiffon Taffeta, in solid black; fine soft finish; yard, \$1.80

Wash Satin, in flesh and white; good quality; 36 inches; yard, \$1.00

Kitty Kat Taffeta Habutai, in flesh; washable; yard, \$1.25

Skinner's Satin-finish Silk, in navy and white plaids; black and white stripes; yard, \$2.00

Carduroy, in beautiful shades of rose, hay, silver and white; silk finish; 31 inches; yard, \$1.00

36 inches; yard, \$1.00

Optical Offer

EXTRAORDINARY

FOR SATURDAY, APRIL 1ST

Our Scientific Eye Examination, Gold Filled Modern Finger Piece Mounting, or Spectacles, including Best Lenses. Many charge from \$4.00 to \$5.00. Special price, \$1.50.

INVISIBLE BIFOCALS—one-piece lens—for close and far. Low as \$5.50.

Special ground lenses at lowest prices.

Crown Optical Co.

210 NORTH THIRD STREET

Harrisburg, Pa.

FARM ADVISERS IN BIG DEMAND

Visits Can Be Arranged Through Application to the Capitol

Now that the farm advisers of the State are in the field there has been a jump in the requests for the services of the advisers at the State Department of Agriculture and these experts on farming matters and these ten to six months in various points of the State.

The department has carefully selected its corps of farm advisers who are practical men in their particular lines and each one of them has had years of experience in actual farm management. The services of these advisers are offered to the farmers, dairymen, poultrymen, gardeners, and fruit growers of the State who need help in planning their farm work and wish to receive practical advice for the betterment of conditions and crops.

Among the requests that have been received at the Department by Deputy Secretary of Agriculture C. E. Carothers, who is in charge of the work, are a number from county superintendents of schools, asking for night lectures in rural school houses. The school authorities report a great interest among the farmers in night schools for the development of agriculture and the experts will give demonstrations in community work, breeding and market gardening and all classes of community buying and selling.

The farmers desiring information on soils, farm crops, dairying, stock raising, poultry, drainage, water supply, house sanitation and household economics should apply to the Department of Agriculture at once. The service is entirely free and the demand is great. Early requests will be scheduled and the work taken up with the farmers as soon as possible.

ADDRESS BY DR. GRANVILLE

Waynesboro, Pa., March 31.—In addition to making an address in the Y. M. C. A. building next Sunday afternoon, the Rev. Dr. W. A. Granville, president of Gettysburg College, will preach in the Lutheran Church morning and evening.

EMERSON'S HART OF THOUGHT

Another puzzle in Emerson, to the general reader, is the centrality of his thought. I remember a remark of Professor Thomas A. Thacher, upon hearing an address of W. T. Harris, the distinguished Hegelian and educationalist. He said that Mr. Harris went a long way back for a jump. So Emerson draws lines of relation from every least thing to the center.

A subtle chain of countless rings. The next unto the farthest things.

He never lets go his hold upon his thought. All his wagons are hitched to stars; himself from God he cannot free. But the citizen does not like to be always reminded of God, as he goes about his daily affairs. It carries a disturbing suggestion of death and the judgment and eternity and the other world. But, for the present, this comfortable phenomenal world of time and space is good enough for him. "So a' cried out, 'God, God, God,' three or four times. Now I, to comfort him, bid him 'a' should not think of God. I hoped there was no need to trouble himself with any such thoughts yet."—Henry A. Beers in the April Yale Review.

CHARLES E. W. PARKER DIES

Special to the Telegraph

Dauphin, Pa., March 31.—One of the oldest colored residents of Dauphin, Charles E. W. Parker, died after a short illness at his home in the townpath about 10 o'clock yesterday morning. He was a member of the Odd Fellows, Masons and Elks lodges, all of Harrisburg. Mr. Parker had conducted a small repair shop in Erie street for several years. He is survived by his wife. The body was taken to Harrisburg yesterday afternoon and the funeral services will be held on Monday from the colored Methodist Church of that place.

DEATH OF MRS. GEORGE SHIRES

Florin, Pa., March 31.—Mrs. George Shires, aged 71 years, died yesterday from pneumonia. Her husband, two sons, a daughter and three sisters survive.

Strike or No Strike

The demand for coal will continue the same—but the supply may be curtailed through the stoppage of work in consequence of the failure of the operators and miners to reach an agreement before April 1.

Are you prepared with enough coal to keep you comfortable until warm weather?

Most bins need replenishing. Does yours? You'd better investigate and hurry your order to us.

H. M. KELLEY & CO.

1 North Third Street

Tenth and State Streets

Try Telegraph Want Ads

Father John's Medicine

contains the exact kind of nourishment needed by those who have throat troubles and are weak and run down, and this tissue building food is easily taken up by the system. That is why it is best for colds and as a tonic in the Spring.

No weakening stimulants or dangerous drugs.

CREME LILAS

Non-greasy Toilet Cream—Keeps the Skin Soft and Velvety in Rough Weather. An Exquisite Toilet Preparation. 25c.

GORGAS' DRUG STORES

16 N. Third St., and P. R. R. Station

BELL-ANS

Absolutely Removes Indigestion. One package proves it. 25c at all druggists.