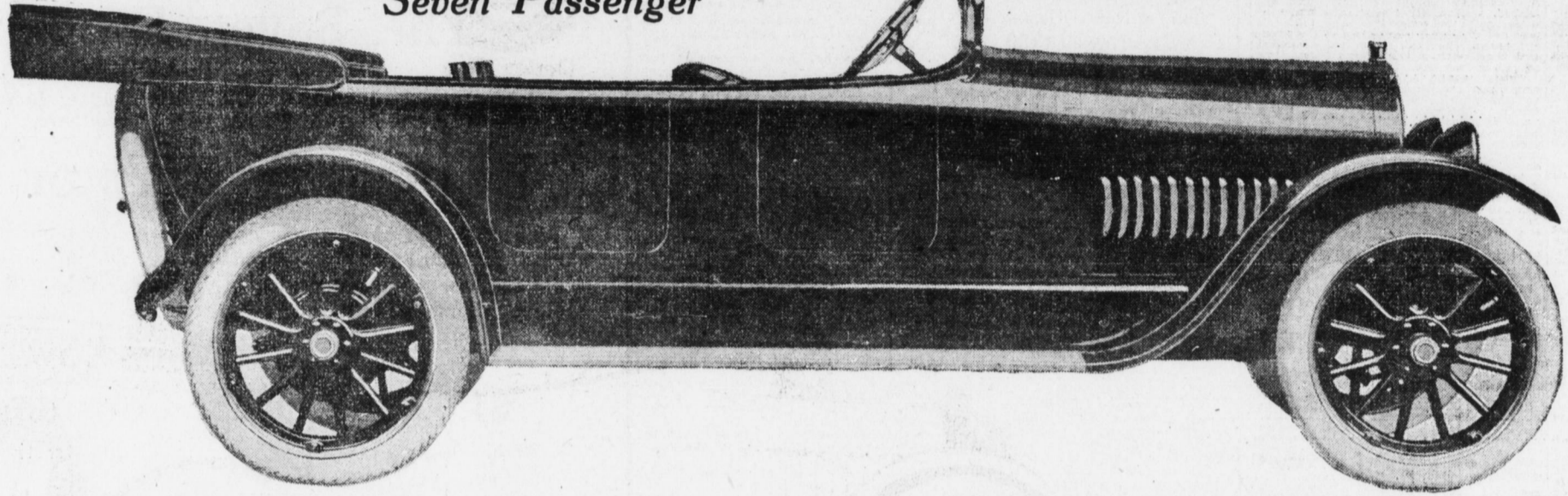




The New Jeffery Six Seven Passenger

\$1450 f. o. b. Kenosha



Note the big, beautiful roll edge body, the sweeping and powerful lines, the high, narrow radiator and roomy tonneau—a spectacular achievement in body design. Every line and every detail of finish and design is expressive of power, speed, luxury.

The body couples maximum space and maximum beauty. Every line is there for a reason. No detail has been neglected—even the auxiliary seats have been so disposed as to make for a maximum of roominess and beauty by fitting them into the backs of the front seats.

A Spectacular Performance Six

A Big Roomy, High-Power Light-Weight Automobile—Built to Satisfy the Ultimate Taste For Speed, Hill-Climbing Ability and Smoothness of Operation

Forget the price of this new 7-passenger JEFFERY Six. Imagine its effect on the boulevard, alongside the curb, in front of the club. All the grace of line, the luxurious roominess, the exquisite finish of higher-priced creations! Nor can cars in the \$5000 class eclipse it. And the JEFFERY Six is a car of spectacular performance—big, powerful, light, easy-riding, fast. Step on her at 40 miles an hour and she fairly jumps

beneath you, because the motor develops more power than you will ever need—more speed than you will ever dare to use—velvety power and velvety speed and wonderful hill-climbing ability.

The JEFFERY Six with its 121-inch wheelbase is so light, has its weight so wonderfully distributed, and has so powerful a motor that its hill-climbing feats on "high" have been nothing short of marvelous.

In this, as in all things, the JEFFERY Six is a car of spectacular performance.

The motor of the JEFFERY Six—with its aluminum fittings and every possible feature helping to combine lightness with power—is one of the very few motors which will satisfy this year's buyers.

In short, fix in your mind the strongest claims made

for any car selling for \$2000 or less—and compare them with the actual performance of the new JEFFERY Six.

Compare their performance on the hills, in mud, in sand, in city traffic and out on the open road. We will abide by your decision, confident of the outcome.

BENTZ-LANDIS AUTO CO.



EMPLOYMENT ACT IS NOW ENFORCED

Director Lightner Secures the Arrest of a Man Who Opened a Fraudulent Office

Jacob Lightner, director of the Bureau of Employment of the Department of Labor and Industry and his investigator J. J. Moran, co-operated with the Philadelphia detective bureau in running to earth Morris Rose and Bernard Sonand, both of New York. This is the first prosecution for violation of the State Bureau of Employment Laws. Sonand opened an office in Philadelphia and began business under the name of the Chauffeur's Employment Bureau and Reference Agency. All applicants were referred to his partner Morris Rose, who engaged quarters in a hotel in Philadelphia as a wealthy New Yorker. Applicants answering advertisements of Sonand were compelled to pay a fee and were then referred to Rose. Rose in turn would engage them and inform them that they were to report for work the following week. At a hearing before Judge Finletter they pleaded guilty and were sentenced to one year for operating an employment agency without a license and one year for conspiracy to defraud.

Mayor Plans to Put on Another Detective; Will Make Quarterly Reports

Mayor Meals announced to-day that he is considering taking one of the "plain clothes" men now in in that department a detective, with a detective's salary. Part of this will be paid, he said, with the salary not being used since Joseph W. Ihach was dropped from the force. The remainder of the money will probably be used to pay the other plain clothes men who are working extra hours without pay. Mayor Meals also said that quarterly reports of the police department from both Chief of Police J. Thomas and Superintendent of Detectives William L. Windsor, Jr. will be submitted to council.

HOUSEKEEPER GOES TO JAIL

Three months in jail and fines totaling \$55 were imposed by the Dauphin county court to-day upon Mrs. Mary Shaffer who was convicted of conducting a disorderly house in Greenwood street, and furnishing liquor to minors. George Crispin, Charles Smith and William Valentine were tried for slaying James Brown with a knife.

LOUDERMILCH IN PITTSBURGH

President Fernando Loudermilch of the Dauphin county poor went to Pittsburgh to-day with the three small youngsters who will be placed in an institution for the feeble-minded.

FALLS FROM SCAFFOLD

Samuel Spangler, 434 Hunter street, severely bruised and sprained his wrist, last evening, when he fell from a scaffold in front of the Davenport Restaurant.

NAME COMMITTEE TO SOLVE CITY RIVER PROBLEMS

Representative Water Sport Lovers Confer With Park Expert Manning

First definite steps toward permanently solving Harrisburg's river "basin" problem were taken last evening at a three-hour conference of the city's representative canoeists, motorboat owners, boat liverymen and other water sport enthusiasts with Warren H. Manning, park expert and landscape architect.

Every phase of the subject from municipal bathhouses, bathing beaches and police regulations to provisions for safeguarding and guiding the river lover was threshed out.

The most feasible of all these suggestions will be sifted and embodied in a report to the park department by a committee of nine and it is expected that the regulations thus framed will serve to govern future activities on the Susquehanna so far as it is practicable to carry them out.

The committee will be named within a day or two by George W. Reilly, who was chosen chairman of the organization meeting.

Every river activity was represented at the session, while the official "OK" to the movement was added by the presence of Mr. Reilly, representing the City Planning Commission; Mr. Manning, City Commissioner E. Z. Gross, superintendent of parks and public property, and V. Grant Forrer, assistant park superintendent. The boating interests of all kinds were represented by the following:

A. P. Dintaman, Harry J. ("Mayor") Berrier, William Fisher, Charles T. Ensminger, A. J. Simms, George and Jonas Reist, James K. Jackson, Gilbert M. Oves, Ray Stewart, Thomas M. Kelker, Ira Kindler, George W. Bogar and Ira F. Myers, Steelton.

USE OF STATE FIRE FUNDS

In an opinion given to-day to the State Board of Public Grounds and Buildings, Deputy Attorney General Hargest holds that the board would not be justified in rebuilding the laundry at Polk institution for the feeble-minded on a more extensive scale than the structure burned through use of funds of the State insurance fund. The act creating the fund, he holds, contemplated replacements. As to the power plant, for whose enlargement the Legislature voted \$20,000 and which was also burned, he holds that it may be rebuilt on a larger scale provided the cost does not exceed the amount of the loss plus the appropriation.

NEGRO WHO ASSAULTED WHITE GIRL GETS 7 TO 12 YEARS

From seven to twelve years in the penitentiary—the longest term inflicted by the Dauphin County Courts during March Quarter Sessions—was the penalty doled out yesterday to Robert E. Johnson, the negro, who was convicted of criminally attacking a 15-year-old white girl.

AUTO HITS GUY ROPE

Howard Shannon, driving a delivery car for F. B. Aldinger, crashed into a guy rope which workmen had fastened to an old maple tree which they were removing from 103 Market street, yesterday afternoon. The windshield was smashed, but Shannon escaped almost unharmed.

EIGHT CYLINDER KING

"The Car of No Regrets"
The King is the second oldest automobile in the United States; 1916 model \$1150
7-Passenger Touring .. \$1350
Good Territory For Live Dealers
King Car Sales Co.
80 S. CAMERON ST.

5-Passenger Touring \$665
Roadster Type \$540
Ensminger Motor Co.
THIRD AND CUMBERLAND STS.
Bell Phone 3515

Recharging and Repairing OF ALL MAKES OF STORAGE BATTERIES

Consult Us About Our Revised Prices.
Excelsior Auto Company
11TH AND MULBERRY STREETS, HARRISBURG, PA.
Distributors For "Exide" Batteries

Open Evenings

Overland On and after today our showroom will remain open at night until 10.30

THE OVERLAND-HARRISBURG COMPANY
212 North Second Street

Used Motor Cars

Come in and look them over.
Largest Stock In Central Penna.
All overhauled and repainted and guaranteed in good running order.
Ensminger Motor Co.
Green and Cumberland Sts. Bell Phone 3515

GORSON'S

SALES

You gain on these prices—buy NOW

1916 CHANDLER roadster; used as demonstrator; practically new \$700.	1916 HOLLIER "5"; extra equipment; great value.
1915 IMPERIAL roadster; all up-to-date equipment; streamlined body.	1915 CHEVROLET roadster; electric lights and starter; demountable rims.
1916 PAIGE touring; run only 1000 miles; bargain.	FORD touring cars and roadsters, \$150 up.
1916 HUP roadster; in elegant shape.	STUTZ roadster; very classy; \$850.
1916 CHANDLER touring cars; only a few left; \$325.	AMERICAN, demountable rims; mechanically perfect; \$250.
1915 BUICK touring car; run 3000 miles; extra tire.	REO touring car; recently overhauled; \$295.
1916 HUDSON touring car; perfect condition; extra equipment; \$350.	1915 OVERLAND touring car; all electric equipments; \$400.
1916 CHALMERS light six touring; like new.	1915 STEARNS touring car; "Six" light Knight motor.
1915 MITCHELL touring; seven passenger; bargain; \$450.	HUDSON touring; four brand-new tires; complete tool kit; \$225.
AMERICAN, overhauled and repainted; \$300.	MARION roadster; very attractive; \$275.
1915 OVERLAND roadster; very attractive; low price.	1915 OAKLAND touring car; extra equipment; at a snap.
1915 YELF touring car; shock absorbers; brand-new tires; \$475.	1914 BUICK touring car; electric lights; generator; Klaxon horn; \$400.
BUICK roadster; demountable rims; "Turtle Back"; \$400.	1915 PARTIN PALMER; electric lights and starter; extra tire; \$250.
1916 MAXWELL touring car; owner will sell at a sacrifice.	1915 STUDEBAKER touring car; excellent condition; run 2900 miles.

We specialize on Motor Trucks and Delivery Wagons
GORSON'S AUTOMOBILE EXCHANGE
238-240 N. Broad St., Philadelphia
Bureau Bulletin Free Agents Wanted

FRONT---MARKET MOTOR SUPPLY CO.

Recommend and Guarantee

30 % More Speed
30 % More Power
40 % More Mileage
Works AUTOMATIC

\$5.00 Sold with a guarantee your money back if not as represented. **\$5.00**

INSTALLED

Easily installed in five minutes.
Fits any Car.
Makes Starting easy.